

**RURAL
CHURCHES
KINGS**

MONTAGUE pastoral charge, the Presbyterian Church St. Andrew's, Montague Church school recommences at 10 a.m. Worship 11 a.m. and 7:30 p.m. St. Andrew's, Lorne Valley: Preparatory service Friday 8:00 p.m. St. Andrew's, Cardigan: Church school 10:15 a.m. Worship and sacrament of the Lord's Supper 2:30 p.m. Rev. Basil Lowery, minister.

MURRAY HARBOUR - Murray River United Church, Little Sands: worship 9:30 a.m., church school 11 a.m. Murray Harbor: worship 11 a.m. Church School 9:45 a.m. Murray River: worship 7:30 p.m. Church school 11 a.m. Rev. David Barwise, minister.

DUNDAS - ANNANDALE United Baptist pastorate - Dundas Sunday school 10 a.m., service 11 a.m. Annandale Sunday school 10 a.m. Service 8 p.m. Communion at each service. Lie. Myrtle Ingersoll, pastor.

PRESBYTERIAN CHURCH, Caledonia: church school 10:00 a.m., worship 11 a.m. Peter's Road: church school 1:30 p.m. Worship 2:30 p.m. Murray Harbor North: church school 7 p.m. Worship 8 p.m. Rev. M. Carl Currie, minister.

MONTAGUE Baptist Pastorate - Sunday, Sept. 5, Rev. A.G.J. Steeves, minister. Montague: Sunday School 10 a.m. Worship 11 a.m. Murray River: Sunday School 2 p.m. Worship 3 p.m. Murray Harbor: Sunday School 2 p.m. Worship 7:30 p.m. Sturgeon: Sunday School 2:30 p.m. Worship 1:30 p.m.

MONTAGUE Bible Chapel, Sunday, Sept. 5, Lord's Supper 9:30 a.m. Sunday School and Adult Bible Class 10:45 a.m. Evening Service 7:30 p.m.

DUNDAS - GEORGETOWN pastoral charge, the United Church, Dundas church: worship 11 a.m., church school 10 a.m. Annandale church: worship 3 p.m. St. David's Church: worship 7:30 p.m., church school 10 a.m. Guest speaker, Mr. Sandy Clark.

STURGEON United Baptist Church: Special 7:30 evening service. Speaker, Wallace Jordan. Special music.

MURRAY RIVER Pentecostal service, Rev. Fred Day, minister. Sunday school 10 a.m. Worship 11 a.m. Evangelistic service 7:30 p.m.

FREE CHURCH of Scotland, Worship at Bangor 2 p.m. Murray River 4 p.m. Birch Hill 7:30 p.m. Rev. Ewen E. MacDougall, minister.

GEORGETOWN BAPTIST Services at 11 a.m. and 7:30 p.m. Rev. Earl Smith, pastor.

SOURIS - BAY Fortune United Churches: Worship: Souris 11 a.m., Bay Fortune 7:30 p.m. Rev. W.A. MacQuarrie, DD, guest speaker.

QUEENS

THE PRESBYTERIAN Church, Wood Islands, Sunday, Sept. 5, Service of Worship 9:30 a.m. Sunday School 10:45 a.m. Rev. Ewen E. MacDougall, guest minister. Rev. Donald Nicholson, minister.

NEW LONDON pastoral charge, 9:30 a.m. Long River: 11 a.m. Geddie Memorial: 8 p.m. New London (St. John's). Minister, Rev. I.L. Files.

WINSLOE UNITED pastoral charge, 11 a.m. Winsloe North: 7:30 p.m. Highfield, Sunday Princetown Road 10 a.m. Winsloe North 9:45, Winsloe South 9:45. Minister, Rev. T.R. Goudge.

VALLEYFIELD - ORWELL Head - Belle River United Churches, Minister, Rev. Graeme M. Fraser. 9:30 a.m. Belle River, 11:15 a.m. Orwell Head, 8 p.m. Valleyfield.

BROOKFIELD PASTORAL charge, the Presbyterian Church, Hartsville: Worship 11 a.m. Church school 10 a.m. Glasgow Road: worship 2:30 p.m. church school 10:30 a.m. Hunter River: worship 8 p.m. Clair MacLeod, student minister. Rev. Basil Lowery, interim-moderator.

VERNON - POWNAL pastoral charge, the United Church, Minister, Rev. W.E. Grant. Vernon River: 9:30 a.m. Orwell 11:00 a.m. Pownal 8 p.m. Sessions to meet in vestry of Cherry Valley Thursday, Sept. 2 at 8 p.m.

BREADALBANE PASTORAL Charge, the United Church North Granville 10 a.m. Rose Valley 11:30 a.m. Breadalbane 8 p.m. Rev. William E. Hare, BA, BD, minister.

HAMPTON Pastoral Charge, United Church, DeSable 9:45, Bonshaw 11, Hampton 7:30. Rev. Bryer R. Jones, minister.

PRESBYTERIAN CHURCH, central parish, Clyde River church: 10 a.m. Sunday school 11 a.m. worship service and sacrament of Baptism and dedication, 9:15 p.m. young people's meeting, canoe Cove church: 2 p.m. Sunday school, 3 p.m. annual memorial service with special music by Mr. and Mrs. Neil Matheson and Mr. and Mrs. Harold Carver. Nige Mile Creek Church: 10 a.m. Sunday school hour, 8 p.m. worship service and (Continued on page 12)

VALUES EFFECTIVE UNTIL CLOSING
SATURDAY, SEPTEMBER 4th

For The

HOLIDAY AHEAD

MORSES
TEA BAGS
60's GAUZE **79c**

STAFFORD - CHERRY
PIE FILLING
20 OZ. TIN **37c**

CHRISTIES
GRAHAM WAFERS
2 PKGS. **69c**

FRYS CHOCOLATE
CHIPS . . . 2 PKGS. **49c**

KRAFT - 16 OZ.
Cheez Whiz ONLY **69c**

SCHWARTZ
VINEGAR
136 OZ. JAR
SPECIAL **69c**

CROSS-BLACKWELL
1 Chef Sauce BOTH **49c**
1 Worcester ONLY

CARNATION EVAPORATED
MILK
6 FOR **99c**
BABY SIZE
4 TINS **37c**

LARGE - MELLOW
GOLDEN RIPE
BANANAS
5 lbs. **89c**

LARGE - CRISP
CELERY 2 FOR **29c**

RED & BLUE - GREEN - YELLOW
PLUMS . . . 6 Quarts **\$1.19**

ISLAND RIPE
TOMATOES 2 Lbs. **45c**

LOCAL FRESH FRUITS AND VEGETABLES ARRIVING DAILY

SAVE CASH SHOP
ELLIS BROS.
SHOPPING CENTRE

Remember
There's
An Extra
Day.....



FROZEN FOODS
Highliner In Batter
HADDOCK 14 oz. pkg. **49c**
Valley Farm
French Fries 2 Lbs. **49c**
PEPPERIDGE CHOCOLATE, DEV. FOOD, PINEAPPLE
PARFAIT CAKES PKG. **53c**

KIMBERLY - CLARK SALE
FLAT FOLD - WHITE OR PINK
KLEENEX . . . 2 PKGS. **49c**
BALLET TOILET - WHITE
TISSUE . . . 4 ROLL PAK **45c**

KLEENEX - ASSORTED COLORS
TOWELS . . . 2 ROLL PKG. **45c**

BALLET - ASSORTED COLORS
NAPKINS . . . 2 PKGS. **35c**
REGULAR
KOTEX
PKG. OF 12 **39c**

BEST WISHES TO LABOR AND MANAGEMENT, EVERYWHERE, FOR AN ENJOYABLE LABOR DAY WEEK-END SUMMER'S LAST LONG HOLIDAY.

Labor Day is a day when we honor all workers - male or female - in the office, shop or factory. Labor has played an important role in the growth of SAVE-EASY. Our supermarkets are an exemplification of free enterprise in action; local businessmen enjoying the right of doing business in their own community, sharing community interests with neighbors, to whom they are providing a complete food service at lowest prices.

SAVE-EASY
Your 1 - Stop Pickling Centre **Shop**



LIBBY'S FANCY
TOMATO JUICE 48 OZ. TIN **39c**

CANADA PACKERS
MARGENE 2 LBS. **65c**

QUAKER ROLLED
OATS 5 LB. BAG **67c**

YORK FANCY CREAM
CORN 2 20 OZ. TINS **43c**

ALLENS
Apple Juice 3 4's **\$1.**

SCOTTIES
Potato Chips PKG. **39c**
KRAFT SANDWICH
SPREAD . . . 16 OZ. **39c**

IMPERIAL
Parowax 2 1 LB. PKGS. **49c**

MIX-O
Bleach 64 OZ. JAR **49c**

KIWI-PASTE
Shoe Polish 2 TINS **39c**
BUDGET - 100 FT. ROLLS, REFILLS
Wax Paper 2 FOR **55c**

EASIFIRST
SHORTENING 2 LBS. **59c**

McLARENS DILL
Pickles . . . 2 24 OZ. **69c**

FANCY CHICKEN
Haddie 2 15 OZ. TINS **65c**
CHRISTIES CHOCOLATE CHIP
Cookies 1 LB. PKG. **49c**

PICKLING - SCHWARTZ
Spice 3 OZ. **19c**

COARSE
Salt 3 LB. **23c**

Chore Girl 3 FOR **39c**
VALU-PAK - 25 FOOT ROLL
Foil Wrap 2 PKGS **69c**

HUNT'S PURE TOMATO
CATSUP . . . 2 11 OZ. **39c**

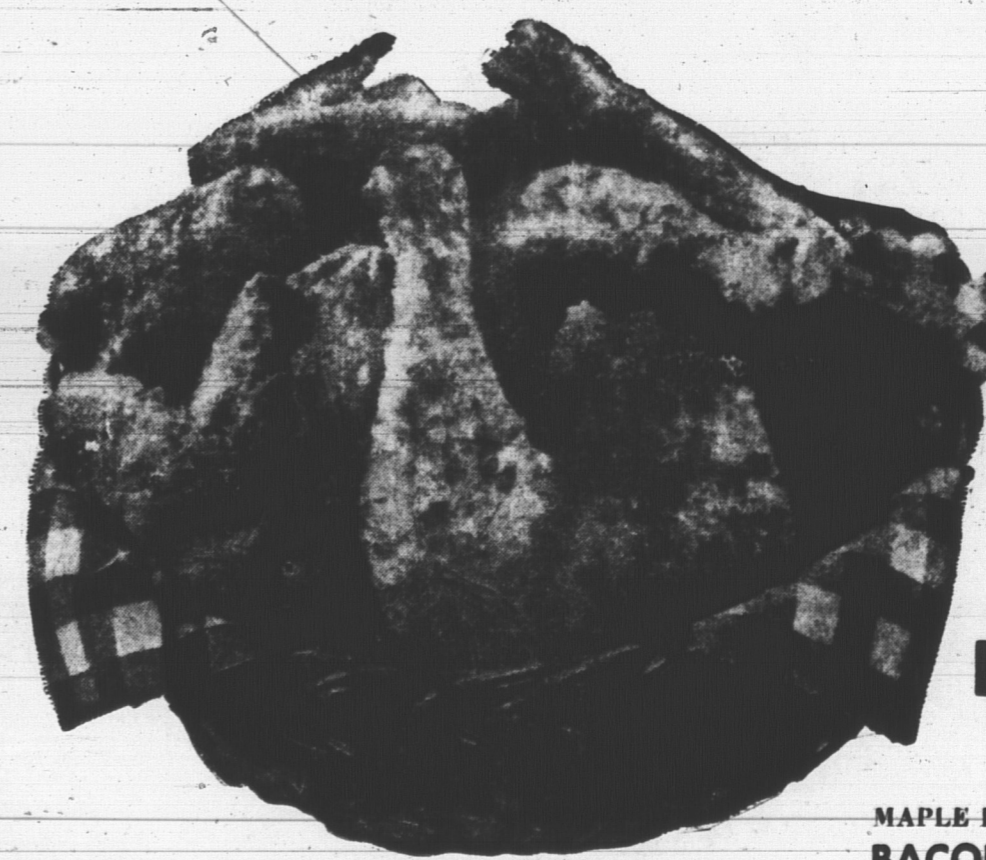
DUNCAN HINES - PLUS CAKE PAN FOR 1c
CAKE MIXES 2 19 OZ. **89c**

NEWPORT
FLUFFS 8 QUART PKG. **45c**

CREST
TOOTH PASTE GIANT SIZE **59c**

DETERGENT
OMO GIANT PKG. **89c**

GOVERNMENT INSPECTED MEATS



FRESH
MARITIME GROWN
Average Weight 2 1/4 - 3 lbs.
GRADE "A"
**CHICKEN
FRYERS**
39c
LB.

FRESH GRADE "A" WHOLE - CUP UP
CHICKEN IN BASKET LB. **43c**

GREEN GABLES - LOOSE
SAUSAGES LB. **55c** | SWIFT'S LOOSE
WIENERS LB. **45c**

MAPLE LEAF - SMOKED
**SHANKLESS
PICNICS** LB. **43c**



161 St. Peter's Road
Sherwood, P.E.I.
Open Thur., Fri., Sat.
Nights

AMPLE
FREE
PARKING