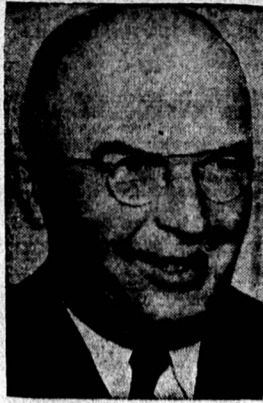


Possible Nominees For Ontario Liberal Leadership



WALTER THOMSON



JOHN G. BROWN



FARQUHAR OLIVER



ALLAN LAMPORT

The dramatic resignation of Ontario Liberal leader, Walter Thomson, at the party's annual meeting in Toronto has brought up the names of several prominent Liberals as possibilities for the leadership.



"For building or remodeling I always recommend Johns-Manville Asphalt Shingles"

On new roofs or old they're easy to apply, low in cost, fire-resistant and beautiful!

to all types of architecture. In every way, Johns-Manville Asphalt Shingles offer the finest low-cost roofing protection available.



For free colour folder on Asphalt Roofing see your J-M dealer or write Canadian Johns-Manville, Dept. 41, 199 Bay St., Toronto.

Johns-Manville BUILDING MATERIALS

Where to Buy J.M. Building Materials

M. F. SCHURMAN CO. LTD.

Kensington - Summerside - Charlottetown

The Home Of

A Complete Building Service

L. M. POOLE & CO.

Paoli's Wharf

Phone 171

WE OFFER

SERVICE Prompt Deliveries to either Trucks or Cars.

QUALITY Both Mechanical and Chemical

PRICE As Low as the Lowest for like quality.

TRY OUR GOODS,

ISLAND FERTILIZER CO.

Ltd.

Charlottetown

Unholy Bond

By Cameron Dockery

CHAPTER NINE Part One

So had they all—Abby, the Mileses and herself, but on Richard had fallen the responsibility of establishing its medical reputation.

The little boy had been flown to another city where an expert surgeon had performed the operation.

"Janet, what am I going to tell these distracted parents?" he said bitterly. "That we have only ten beds—no more room?"

"I know how you feel, Richard. But if we take any more than ten patients, they won't receive proper care."

"You're right, of course. But it gives me a wrench to think of all these children. Lord, why aren't there more homes in Oakhart—"

The countryside was buried under two feet of firmly packed snow. Dozens of childishly constructed forts and snow men stood guard under the gnarled scraggly apple trees and the tracks of sleds crisscrossed a gentle slope beyond the house.

It was good hearing their voices again, their gossip about the big heating, their teasing remarks. With Richard they were friendly but def-

After a time Abby brought in a tray of turkey sandwiches and was introduced all around. They liked the brusque, out-spoken, moon-faced woman immediately and were call-

ing her "Aunt Abby" before they left. But the moment with Richard that Janet had hoped for, was shattered. By the time the last "Merry Christmas" had floated across the cold air, they were both too tired to say anything more than goodnight.

"I know, it is upsetting. But the world is full of unfortunate children, Richard—we can't help them all."

"No, but we can help more than we are."

"By building a wing onto Oakhart."

"I know it does—a good deal of it. It would put Oakhart on the basis of a regular hospital; it would mean about thirty patients instead of ten, additional nurses, servants and cooks."

He leaned forward resting his large hand on the white enamel examination table. His eyes searched her face, but seemed uncertain of what they found.

"Then you don't like the idea?" Deep lines of disappointment formed around his mouth.

DAILY CROSSWORD

- ACROSS 1. Latha 2. Endured 10. Sacred bull (Egypt.) 11. Bird 12. A catkin 13. Aches 15. Addition to a building 16. Perform 17. Falsehood 18. Malt beverage 19. A song for one 21. Personal pronoun 22. Makes deeper 25. Lowest note (Guido) 27. God of war (Gr.) 28. A wing 31. Sign of the zodiac 33. Gadolinium (sym.) 34. Follow 35. Follow 37. Haranguer 38. Bulging jar (Sp.) 39. Hindu garment 40. A police officer (U.S.) 42. Thong DOWN 1. Support for injured arm 2. For fear that 3. Land-measure



Yesterday's Answer

- 37. Mountain of Thessa] 41. Doctor (abbr.)

DAILY CRYPTOQUOTE—Here's how to work it: AXYDLBAAXE is LONG FELLOW. One letter simply stands for another. In this example X is used for the three L's, Y for the two O's, etc. Single letters, apostrophes, the length and formation of the words are all hints. Each day the code letters are different.

Yesterday's Cryptogram: SMALL PRAISE MAN GETS DIS- PRAISING THE HIGH GODS—SWINBURNE.

FARMERS

CARLOAD OF FERGUSON TRACTORS ARRIVING THIS WEEK.

To Make Sure Of Early Delivery See Us Soon.

W. G. BARBOUR LTD.

Easton St.

Charlottetown

PLAYER'S CIGARETTES

are made better, smoke better,

BUY A PACKAGE ARE better TODAY!



the hospital! And you, Janet, what must you have thought of me?" His hands dropped to his sides. "Well, it's your property." "Scarlet crept over her face, lighting her hair to pale gold.

DOROTHY DIX SAYS—

Continued from page 2 the gutter and you are shunned by any decent person? Stick to your husband and try to be a good wife to him. If you continue the life you're leading, you'll be doing him a favor by getting a divorce, but your only salvation is to stick with him and amend your life.

DEAR MISS DIX: For two and a half years I have known Harry, who lives in our neighborhood. He calls for a date once in a while, although we see each other constantly due to the fact that we are close neighbors and go with the same crowd.

ANSWER: Harry may be all you claim in the way of a good looking, amusing, intelligent boy, but I don't think he has much behind these surface qualities. He is showing you remarkably little consideration and he is in mind that, even if he should become serious with you, his lack of thoughtfulness will remain quite constant.

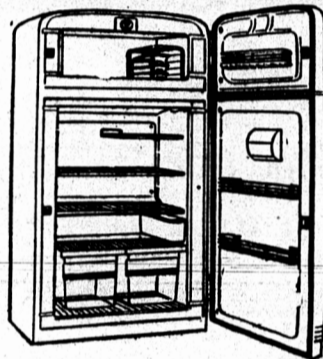
CLINIC SCHEDULE

Through the facilities of the Department of Health and Welfare, Diagnostic Clinics will be held throughout the Province during the month of June as follows:

- SUMMERSIDE— Tuesday, June 3rd 9:30-12:30 P.M. Tuesday, June 17th 9:30-12:30 P.M. SOURIS— Tuesday, June 10th 1:30- 4:00 P.M. MONTAGUE— Monday, June 16th 1:30- 4:00 P.M. ALBERTON— Monday, June 23rd 9:30-11:30 A.M. 1:30- 3:00 P.M. PROVINCIAL SANATORIUM— Every Tuesday 10:00-12:00 A.M. Every Thursday 1:30- 4:00 P.M. Every Friday 1:30- 4:00 P.M.

Patients for review will receive appointments through the mail. All persons who have not been in contact with an active case of Tuberculosis are requested to consult their family doctor or their district Public Health Nurse, either of whom will be pleased to make appointment if indicated.

E. M. FOUND, M.D., C.M., Medical Director of Clinics.



IT'S THE NEWEST

FIRESTONE TWO-ZONE

10 Cubic Foot

TWO-DOOR, TWO-TEMPERATURE REFRIGERATOR

Zero Freeze Compartment Plus A Complete Refrigerator

WITH AUTOMATIC DEFROSTING

THE MOST WANTED REFRIGERATOR IN AMERICA

All the storage space, conveniences and features you could possibly want are here in this one beautiful, amazingly compact cabinet. It's a true two-door, two temperature model! Each compartment is separately insulated and has different temperatures, different uses and separate temperature controls.

FREEZER COMPARTMENT

CAPACITY . . . Two-cubic-foot freezer holds up to 70 pounds of frozen foods at below zero temperatures for indefinite periods. Gleaming white, one-piece porcelain liner. There are three lever-attached ice cube trays, each with tray release. DOOR PANTRY SHELF . . . Freezer door has its own convenient pantry shelf. Keeps small items such as frozen orange juice out front within easy reach.

REFRIGERATOR COMPARTMENT

FAST, CAREFREE, SANITARY, AUTOMATIC DEFROSTING . . . When the refrigerator is installed, the built-in clock-type defrosting mechanism is set and that's all there is to it. Defrosting occurs every 24 hours in a matter of minutes and does not interfere with refrigeration. Frozen foods, including ice cream, stay completely firm. The defrost water collects in a small, easy-to-reach, easily cleaned container. There are no unsanitary drain tubes to become clogged in time with food part-

icles, no concealed plate or pan to become a breeding place for insect pests.

CAPACITY . . . Eight cubic feet. HEAVILY CHROMED SHELVES . . . All shelves, including door pantry, are heavily chromed with decorative front trim.

TWO EXCLUSIVE FIRESTONE SUPER MISTR CRISPERS . . . Clear plastic fruit and vegetable bins that roll out and tilt down for easy access. Have combined capacity of over 2/3 bushel. BUILT-IN BUTTER COMPARTMENT . . . Keeps butter fresh and spreadable.

CABINET

BEAUTIFUL NEW COLOR DESIGN . . . Throat molding and door interior are a soft mist green. Lavish gold lettering identifies special compartments.

COMPARTMENT LININGS . . . The liners of both compartments are one-piece, built of white porcelain on steel.

DOOR LATCHES . . . Attractive new "Finger Touch" snap-action door latches especially designed for this model. SIZE . . . Overall exterior dimensions are: 62" high, 31" wide, 29 7/8" deep. REFRIGERANT . . . Safe Freon 12. MOTOR COMPRESSOR . . . One-fourth horsepower motor compressor has only 3 moving parts . . . requires no lubrication. Operates on 115 volts, 60 cycle AC. UNDERWRITERS LISTED FIVE-YEAR WARRANTY. I

SALE PRICE 625.00 REGULAR 679.50

Plus Big Trade-In Allowance On Your Old Electric Refrigerator or Ice Box

NOW ON DISPLAY

LOWEST DOWN PAYMENTS—2 YEARS TO PAY

LOWEST PRICES ON THE ISLAND

EXTRA SPECIAL SAVINGS FOR CASH

BIGGEST TRADE-IN ALLOWANCES

WE DELIVER AND INSTALL THEM FREE OF CHARGE TO ANY POINT ON P. E. I. IMMEDIATE DELIVERY. If You Would Like To Make An Appointment for to see them in the evening it can be arranged—CALL 747.

SEE THEM TO-DAY

SAVE SAVE SAVE SAVE

FIRESTONE

BRYENTON & MacKAY CO.

187 St. Geo. St.

Phone 747

Phone 747