

CFCY-TV CHANNEL 13 Sponsored by The Ross Burner & Electric Ltd.

All and Electric Ranges Oil or Coal Ranges... Washers... Dryers... Vacuum Cleaners... Sewing Machines... Floor Oil Burners...

SATURDAY

Atlantic Daylight Time 2:45 p.m.—Afternoon Musicale 3:30 p.m.—Western Theatre 4:30 p.m.—Shur-Glad Amateur 5:00 p.m.—Count of Monte Cristo 5:30 p.m.—Wild Bill Hickok 6:00 p.m.—Oh Susanna 6:30 p.m.—CFCY Television News & Weather 6:35 p.m.—CBC News 6:45 p.m.—Mr. Fixit 7:00 p.m.—Adventures of Pierre Radisson 7:30 p.m.—Holiday Ranch 8:00 p.m.—Perry Como 9:00 p.m.—Grand Ole Opry 9:30 p.m.—Texas Rasin 10:30 p.m.—Wayne & Shuster 11:00 p.m.—CFCY Television News & Weather 11:05 p.m.—Movietime

SUNDAY

Atlantic Daylight Time 11:45 a.m.—Morning Musicale 12:30 p.m.—Faith For Today 1:00 p.m.—About Canada 1:30 p.m.—Country Calendar 2:00 p.m.—Junior Magazine 3:00 p.m.—Family Circle 3:30 p.m.—Blondie 4:00 p.m.—You Are There 4:30 p.m.—Lassie 5:00 p.m.—Lolly Too Dum 5:30 p.m.—Perspective 6:00 p.m.—Burns & Allen 6:30 p.m.—Father Knows Best 7:00 p.m.—December Bride 7:30 p.m.—This Is The Life 8:00 p.m.—Ed Sullivan Show 9:00 p.m.—All Star Theatre 9:30 p.m.—CGE Showtime 10:00 p.m.—CBC TV Theatre 11:03 p.m.—Fighting Words 11:33 p.m.—Serenade for Strings

MONDAY

Atlantic Daylight Time 3:45 p.m.—Afternoon Musicale 4:30 p.m.—Howdy Doodie 5:00 p.m.—In The Story Book 5:15 p.m.—Peppermint Prince 5:30 p.m.—Kiddies Cartoons 6:00 p.m.—Open House 6:30 p.m.—CFCY Television News 6:35 p.m.—Weather 6:40 p.m.—Weather 6:45 p.m.—CBC News 6:55 p.m.—Viewer's Guide 7:00 p.m.—Meet Corliss Archer 7:30 p.m.—World In Action 8:00 p.m.—The Millionaire 8:30 p.m.—On Camera 9:00 p.m.—Love Lucy 9:30 p.m.—Denny Vaughan 10:00 p.m.—Studio One 11:00 p.m.—CFCY Television News & Weather 11:06 p.m.—Boxing

CKCW — Moncton Channel 2

Television Programme Schedule SATURDAY

2:00 p.m.—F. M. Pops 4:00 p.m.—Riders of Santa Fee 5:00 p.m.—Count of Monte Cristo 5:30 p.m.—Wild Bill Hickok 6:00 p.m.—Oh Susanna 6:30 p.m.—Early Evening TV News 6:45 p.m.—Weather 6:50 p.m.—Sports 7:00 p.m.—TBA 7:30 p.m.—Holiday Ranch 8:00 p.m.—Perry Como Show 9:00 p.m.—World In Action 9:30 p.m.—Alfred Hitchcock 10:00 p.m.—Grand Ole Opry 10:30 p.m.—Wayne & Shuster 11:00 p.m.—CBC TV News 11:15 p.m.—Maritime Weather 11:35 p.m.—Canadian Pacific

SUNDAY

11:30 a.m.—Test Pattern 12:00 a.m.—News Magazine 12:30 p.m.—This Is The Life 1:00 p.m.—About Canada 1:30 p.m.—Country Calendar 2:00 p.m.—Junior Magazine 3:00 p.m.—Family Circle 3:30 p.m.—Blondie 4:00 p.m.—You Are There 4:30 p.m.—Lassie 5:00 p.m.—News and Weather 5:15 p.m.—Children's Corner 5:30 p.m.—Perspective 6:00 p.m.—Burns and Allen 6:30 p.m.—Father Knows Best 7:00 p.m.—December Bride 7:30 p.m.—Mark Saber 8:00 p.m.—Ed Sullivan Show 9:00 p.m.—All Star Theatre 9:30 p.m.—CGE Showtime 10:00 p.m.—CBC TV Theatre 11:00 p.m.—Weather and Bill Board 11:05 p.m.—Plainsman and the Lady

MONDAY

1:30 p.m.—F.M. Concert Hall 2:25 p.m.—News 2:30 p.m.—Coffee Chatter 3:00 p.m.—At Home with Helen Crocker 4:00 p.m.—Uncle Jack At The Piano 4:15 p.m.—People and Places 4:30 p.m.—Howdy Doodie 5:00 p.m.—In The Story Book 5:15 p.m.—Peppermint Prince 5:30 p.m.—Range Rider 6:00 p.m.—The Merry-makers 6:30 p.m.—Early Evening News 6:45 p.m.—Sports 7:00 p.m.—Mr. Fixit 7:15 p.m.—Westmorland Singers 7:30 p.m.—Sir Lancelot 8:00 p.m.—The Millionaire 8:30 p.m.—On Camera 9:00 p.m.—Love Lucy 9:30 p.m.—Denny Vaughan Show 10:00 p.m.—Studio One 11:00 p.m.—CBC TV News 11:30 p.m.—CKCW TV News and

Big Steel Tube Plant In Ontario To Open June 15

By FORBES RHUDE Canadian Press Business Editor Mannesmann Tube Co. Ltd. will inaugurate its \$20,000,000 seamless Marie June 15.

The Northern Ontario city, long a big steel producer through Algoma Steel Corporation, will thus become also a major steel processing centre.

The new plant, housed in a windowless-steel building more than a quarter of a mile long and 200 feet wide will be able to produce 225,000 tons yearly of steel tubing ranging in size from 4 1/2 to 10 1/2 inches, outside diameter, and will employ about 500 people.

Dr. Gerhard Wagner is president of the firm and among those present for the inauguration will be Wilhelm Zangen, president of Mannesmann A. G., Duesseeldorf, Germany, and Dr. Hermann Winkhaus, executive vice-president.

The new Sault Ste. Marie plant is located near the operations of Algoma Steel Corporation, in which Mannesmann A. G. Recently arranged to purchase 200,000 shares.

B. W. Roberts, vice-president,

CONTRACT BRIDGE

By B. JAY BECKER

East dealer. North-South vulnerable.

Bridge hand diagram showing North and South hands with cards and suits.

The bidding: East South West North Pass 1 4 4 4

Opening lead — king of diamonds.

It can't be said North was at all bashful in his bidding. His four spade bid was short (about a king). A pass would have been more in order. If South couldn't take further action nothing much could be lost.

Of course, South would have acted over the four diamond bid. He presumably would have doubled or bid four hearts. In either case, the best contract, four spades, would have been reached.

As it was, South (correctly) jumped to six spades. He didn't need much of a four spade bid to make a slam.

The current group has some 70 plants in various parts of the world, including Germany, Brazil, Turkey, the West Indies, Luxembourg, South Africa, the United States, and now Canada.

The various plants employ about 75,000 people and in 1956 sales of their products totalled some \$800,000,000.

Products are used in deep-well drilling by the oil industry; for compressed air in coal mining; boiler operations in steam-generator plants; gas and water pipe lines; in testing and refrigerator industries; ship-building and port installations; for precision machinery parts; and for lighting poles and light-steel construction.

The new Sault Ste. Marie plant is located near the operations of Algoma Steel Corporation, in which Mannesmann A. G. Recently arranged to purchase 200,000 shares.

B. W. Roberts, vice-president,

purchase and stores, Canadian Pacific Railway, gave the following estimate of Canada's economic prospects in a recent address:

"Barring untoward eventualities... I think we can assume with confidence that the upward surge of growth we now are experiencing can be expected to continue.

"That dips and tensions will from time to time continue to alter the pace of growth is, I think, inevitable.

"But the economic facts are such that it would seem improbable that any drastic interruption will occur in the forward direction of the economy.

"The huge appetites of the more industrially-mature countries for metallic ores, oils and newprint, will make spectacular demands on our resource industries.

"Few other resource-rich countries possess the assets of a trained and educated labor force, a stable political and legal environment, a well-developed transportation system and a mature capital market such as Canada enjoys.

"Resource development, in turn, will undoubtedly stimulate growth of manufacturing and construction

J. A. Carruthers Heads W.K.S. Home And School

Captain Carter of the Salvation Army addressed the West Kent Home and School Association at the annual meeting held Wednesday, May 15. Captain Carter stressed the importance of home life in shaping the character of the child and preparing him to live successfully with others.

He emphasized the importance of doing things as a family in order to counteract the many outside influences tending to draw young people outside the home.

Mrs. Keith Kennedy, retiring president, presided at the meeting. Appreciation of Mrs. Kennedy's work for the Association was expressed by the members who also regretted the loss of Miss Boswell as Music Instructor in the schools.

Captain Carter officiated at the installation of the new executive who are as follows: Past President Mrs. Keith Kennedy, President, J. Arthur Carruthers, Vice-President, T.M. Lohlan, Secretary, Mrs. Winnie Phillips, Treasurer, Miss Matheson, Programme, Alan Andrew, Publicity, J.L.B. Anderson, Room Mothers, Mrs. Robertson, Lunch, Mrs. Earl Taylor, Welcome Mrs. Harold Goodwin.

to a far greater degree than in the past when investment was concentrated in agriculture and lumbering."

DAILY CROSSWORD

- ACROSS 1. More mature 6. Brushed away 11. Positive electrode 12. Pang 13. Mitten on a tee of war 14. Land of volcanoes 15. Boy's jacket 16. Merited 17. Nickel (sym.) 18. Letter (Arab.) 19. Rowing crew 22. Constellation 25. City (N. Y.) 26. Island 28. Body of water 29. Moist 31. Mass of ice 32. Letter (Heb.) 33. Glowing 36. Thereon 38. Rents 39. Sell 40. Consumed 41. Taut 42. Wave top 43. Relieved DOWN 1. Voracious 2. Begin 3. Game on horseback 4. Paradise

Grid for the crossword puzzle with numbers indicating starting points for words.

DAILY CRYPTOQUOTE — Here's how to work it:

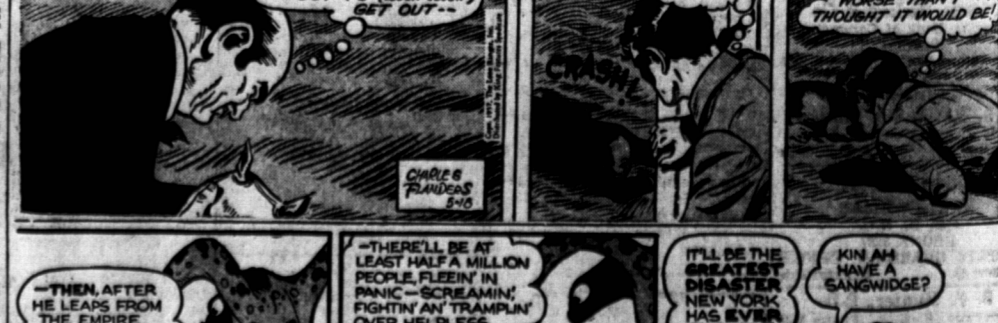
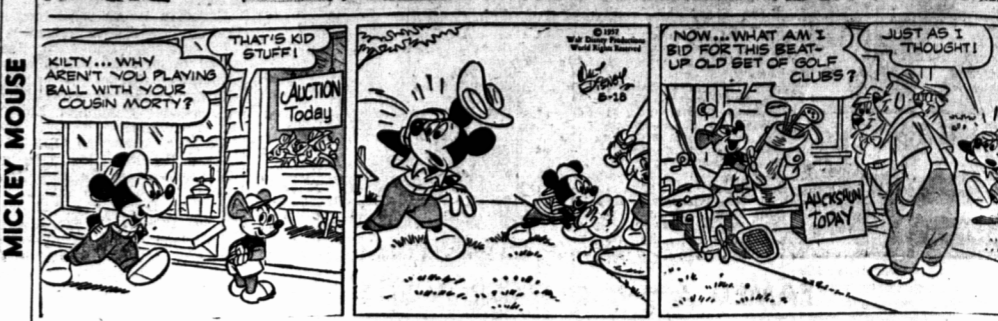
One letter simply stands for another. In this sample A is used for the three L's, X for the two O's, etc. Single letters, apostrophes, the length and formation of the words are all hints. Each day the code letters are different.

A Cryptogram Quotation GMD DSRG NM PIJV EIDDI, -VMGF IW PIJVCMDGA! -YISW CLHM. Yesterday's Cryptogram: ONE ALWAYS BEGINS TO FORGIVE A PLACE AS SOON AS ITS LEFT BEHIND - DICKENS.

OUR BOARDING HOUSE MAJOR HOOPLE



OUT OUR WAY BY J. R. WILLIAMS



Advertisement for Wrigley's Spearmint Chewing Gum with text: Enjoy It After Every Meal. Helps keep teeth clean. Freshens mouth. Sweetens breath.