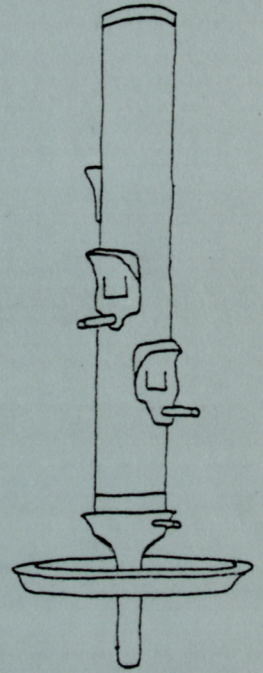


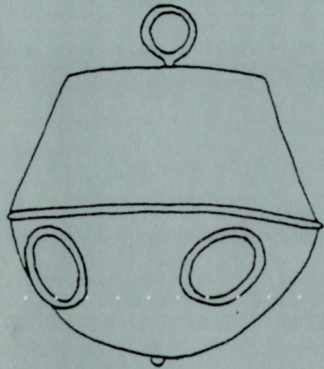
none other is available. A suggestion to help prevent birds from colliding with glass windows is to attach an image of some kind (e.g. decorative stars stenciled on with 'snow in a can') on the outside of the glass. Silhouettes of natural predators (i.e. hawks) are sometimes used but may be too effective and frighten the birds off.

Birds will respond to a wide variety of food offered, and the greater the variety, the more species that will appear. Mixed seed is a standard fare although, unfortunately, commercial mixtures often contain ingredients such as flax, canary and rape seeds seldom eaten by wintering birds. Sunflower seeds are a favourite of many species such as Evening Grosbeaks, American Goldfinches, Black-capped Chickadees and Blue Jays. Whole suet, hung in an onion bag, will attract Downy and Hairy Woodpeckers and be a treat for others as well. Cracked corn is relished by Blue Jays, Common Grackles and Red-winged Blackbirds. Left-overs from the kitchen, both meat and vegetable, may be tried but beware of attracting unwanted visitors such as dogs and cats. Snowbound robins will feed on old apples or other types of fruit. In addition, many birds appreciate water (in a dish with sloping sides) as much in winter as in summer. Be experimental and try various food ideas for attracting birds. Caution however: coconut is one food not to be offered as it cannot be digested by some birds and may cause them harm.



For further information consult your local library for additional ideas on bird feeding stations, as there are many excellent books available. Finally, the Natural History Society welcomes bird sightings from winter bird feeding stations across the island, so please share your sightings with others. Good birding!

FEEDER RECIPE



- 1 c bacon grease (can be mixed with meat drippings)
- 1 c molasses or corn syrup (or use ½ c sorghum and ½ c corn syrup)
- 1 c peanut butter
- cornmeal (enough to make a solid mixture)

Mix all ingredients together, using sufficient cornmeal to stiffen the mixture so that it can be handled. In cold weather this can be rolled into a large ball and tied to a tree branch. Or, if weather is too warm, it can be formed into a cake and put into a feeder. Small tin cans can be attached to trees and filled with the mixture.

- from "Wild Bird Guide" Winter 1981
(Bird Friends Society, Essex, Conn.)

