

Report On Syllabus 1953

Several changes were made in this year's Syllabus in the hope of encouraging entries. Whereas the Charlottetown and Summerside Church Choirs last year were required to sing two selections they may now enter and sing only one if they elect to sing two selections they will enter in two classes.

President



DR. G. D. STEEL

Once again the Prince Edward Island Musical Festival Association would remind all those interested in music that the Executive of the Association is busy with plans for the Annual Festival.

Refresher Course Committee

Lack of teachers is, as always, a major handicap to the progress of the Musical Festival Association. With a view to lessening this shortage, the services of the Refresher Course Committee are at the disposal of all persons who are now teaching, individuals or groups, for entry in the coming Festival.

Those making application are given instruction in Festival music by a competent teacher, and further instruction is extended to any wishing to add more advanced classes to those they are now teaching.

Particular interest is taken in those planning to qualify for the special music teachers license issued by the Department of Education. This license qualifies its holder to teach full time in the public schools of the Province.

Persons having some knowledge of music, and an aptitude for teaching, should make use of this opportunity to develop these talents further, and thereby make their communities better places to live in.

The Association as a result of the assistance from the Provincial Government and of the generosity of business firms and individuals is able again to offer generous prizes and scholarships not only to contestants in the Festival but also to teachers who wish to improve their qualifications as instructors in music in the schools and communities of our Province.

Musical Festival Association

Entries Early

At this time the Program Committee has one request only. "Do get your entries into the hands of the Secretary by March 1st!" We feel that if all realized how important this is they would understand why the Syllabus states: "Late entries will not be considered."

The work of arranging the program begins immediately the lists are in the hands of the committee but this cannot be until the entries are in and the Secretary's records complete. The printing of 2500 programs of 76 pages (last year) requires a great deal of time and the copy must be in the hands of the printers on the date they specify.

Last year the Program committee had one week exactly in which to complete its work. When it is remembered that this is voluntary work done by busy people everyone must agree that it is unfair to expect entries to be kept open for the accommodation of a few.

Help your entries in early and help your Program Committee to turn out a really fine and satisfactory program.

A Message From Prince County

The Prince Edward Island Music Festival has developed so rapidly, both in extent and merit of its competitions, that it now plays an outstanding part in the cultural and educational work of the Province.

To the pupils and other competitors of Prince County, it furnishes an important stimulus to interest and training in the various branches of music, while at the same time giving a large number of the Prince County public an opportunity of attending and enjoying the excellent performances by school pupils and other individuals and groups.

I bespeak, on the part of both competitors and public in Prince County, the co-operation which the forthcoming annual Festival so richly merits.

THANE A. CAMPBELL, Vice-Pres. for Prince County

It is with keen interest that King's County music lovers look forward to the annual P. E. I. Music Festival, which takes place in May.

We hope that a greater number than ever before will participate. Events of this nature instill enthusiasm in the young and the old, and make for a higher standard of cultural development in the community.

Teachers are making all possible effort to increase the number of

Adjudicator



MR. EARLE TERRY, B.A., B. Paed. Adjudicator of Choral Reading

Mr. Terry who is coming to P. E. I. to adjudicate at the Island Festival in May is Director of Music for the London Board of Education. Under his supervision and due to his efforts London is known as a city where music is a real and living thing, whose school music points the way for others in the Dominion to follow.

This is just one sphere of work that adjudicator Earl Terry is making a success. He is also Director of Music in the new St. James Presbyterian Church, London, also founder and conductor of the choral ensemble known as Earle Terry Singers, who have appeared on television at Carnegie Hall and at Cleveland, Detroit and other centres.

Mrs. Kelsey Jones, Saint John N. B. also has been appointed to adjudicate in music at the coming Festival.

Adjudicator of Choral Reading will be Miss Helen Yeo B. A. (Acadia) Ed. M. (Harvard).

A Message From King's County

It is with keen interest that King's County music lovers look forward to the annual P. E. I. Music Festival, which takes place in May.

We hope that a greater number than ever before will participate. Events of this nature instill enthusiasm in the young and the old, and make for a higher standard of cultural development in the community.

Teachers are making all possible effort to increase the number of

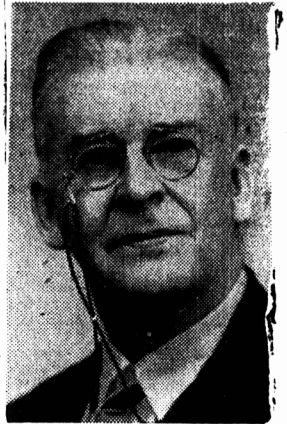
Choral Clinic

The Choral Clinic, which is a very popular attraction at other Canadian festivals, was introduced here for the first time last year, and will be repeated this year. Its purpose is to show how a well conducted choir practice functions. This is done by having a group of sopranos, altos, tenors, and basses on the platform whom the adjudicator instructs in the singing of two numbers. The first one is unfamiliar to the group and the second one is in their possession one week previous. The performance is interesting and instructive to the audience as well as to the participating choir.

Two clinics will be held again this year: one urban (Charlottetown and Summerside) and one rural.

Jessie Beck, Convener

Adjudicator



MR. REGINALD GEEN

Mr. Reginald Geen is a Canadian by birth but studied music in England and France. He has been a well known teacher of voice and piano for the past quarter century, and has given piano recitals in many centers during that time.

Mr. Geen is a past Provincial President of the Ontario Registered Teachers' Association and a lecturer for that body. He is also Dominion President of the Canadian College of Organists.

entries in both solo and group classes, as they feel that the adjudications received are most beneficial and often encouraging.

It is the hope of King's County that the Music Festival of 1953 will be the most successful thus far.

(Mrs. Archibald) GEORGIE A. HUME, Vice Pres. for King's County.

Secretary



MRS. EDWIN H. COOK

Once again I have been requested to bring you a message through this page and I do not think I can do better than to outline the aims of the P. E. I. Musical Festival Association:

To give children an opportunity of expressing themselves through the medium of their voices and instruments. Many of these children, through the Festival will have begun musical careers which for the rest of their lives will bring satisfaction to themselves and pleasure to all who hear them. To all participants it will bring a better appreciation of music and the important part it can play toward making a better life for our people.

To bring into our Festival more adult choirs and choral groups. Here I would like to quote what the President of the Federation of Canadian Music Festivals has to say in this regard: "We recognize at the outset a number of dangers from the absence of adult entries in our Festivals, especially in vocal classes. Young instrumentalists can reach very high standards, but it takes longer for vocalists to mature; and a children's Festival without adult vocal entries fails to exemplify the standards that should be reached. In the case of choirs participate, not only is no adult standard achieved, but young people may readily assume that these standards of sufficient importance to concern them. It is important to maintain choral traditions, and it devolves on those who have inherited these traditions to perpetuate them and pass them on. This fact is singularly true in Canada."

Plan to enter the Festival this year. To those who are unable to participate, your attendance at as many sessions as possible, is a

Field Committee

The Field Committee of the Musical Festival Association has been particularly active in developing a widespread interest in musical training in the Province. Meetings of the Committee have been held, and plans have been laid down for the promotion and extension of this important branch of training. The Branches of the Women's Institute of the Province have been contacted by letter, and urged to take an active interest in musical training. It has been suggested that where possible citizens with musical training be encouraged to direct a program of music and singing in the school and community, and, if talent is available, to enter the Musical Festival Competitions.

The Syllabus of the Musical Festival accompanied the letter, as well as an outline of the Contest Rules.

Advertisements have been placed in our Island papers, and announcements over the radio have been made in connection with these matters. A fine interest in the Crest Contest, and the Festival, has already been observed. Conferences have been held with officials of the Department of Education, and the Executive of the Women's Institute Branch, and the suggestion has been advanced that at least one Musical Director be appointed for this Province, whose duties would be to promote and co-ordinate a program of music training throughout the Province. The Committee is continuing an energetic program of extension and will be pleased to forward a copy of the Syllabus and other necessary information on application to the Convener, Mrs. W. R. Shaw, 127 Water Street, Charlottetown.

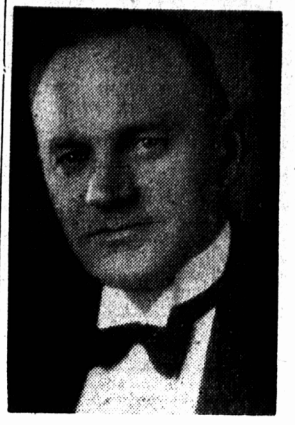
Advertisements have been placed in our Island papers, and announcements over the radio have been made in connection with these matters. A fine interest in the Crest Contest, and the Festival, has already been observed. Conferences have been held with officials of the Department of Education, and the Executive of the Women's Institute Branch, and the suggestion has been advanced that at least one Musical Director be appointed for this Province, whose duties would be to promote and co-ordinate a program of music training throughout the Province. The Committee is continuing an energetic program of extension and will be pleased to forward a copy of the Syllabus and other necessary information on application to the Convener, Mrs. W. R. Shaw, 127 Water Street, Charlottetown.

Percentage Allotment

The Percentage Allotment Committee is now ready to receive applications for financial aid to the sponsors of music in the schools. A notice to this effect has appeared in the local papers recently. As in former years, schools having music teachers not paid by the Dept. of Education will receive aid. In order to encourage entries from distant parts of the Island it was decided to pay part of their transportation costs. This service was greatly appreciated, as shown by many letters of thanks to the Association, and by the appearance at the Festival of several new groups. If the Rhythm Band, Choral Reading or Dancing Classes are held on a different day from the School Classes, and an extra trip must be made with a group, a further allotment will be made.

MRS. J. J. HAYLEY, Chairman, Percentage Allotment Committee. stimulus to those who are endeavouring to carry on the work of the Festival Association. Remember May 4th to 9th inclusive. MARY F. COOK, Secretary.

Hon. President



DR. L. W. SHAW Deputy Minister and Director of Education

The Prince Edward Island Association with its annual festival is one of the youngest of many such associations across Canada but already it has shown itself to be vigorous and healthy, capable of making its contribution to our schools and communities generally and indeed to the whole national effort.

It must be a matter of great satisfaction to those who initiated the project as well as to those who are presently carrying on the work to know that, in the opinion of the Commission, their efforts in common with the efforts of others in our sister provinces are contributing so much to community life in Canada.

Truly has it been said that culture is something which comes from a people rather than something superimposed upon them. May we all have a part in giving music its proper place in the cultural life of our province. The Musical Festival Association is the agency by means of which this can be done effectively and well. Let us all support it and participate in its activities as far as possible.

L. W. SHAW, Deputy Minister and Director of Education.

The Aim

The Musical Festival Association of Prince Edward Island has initiated a splendid program of training and encouragement in this Province, and the competitions that have been conducted evidence the fine response that has greeted these concerts. Encouragement is being given in the hope that music and singing may take hold of the hearts of our people, particularly the young, and that a directed musical training may be undertaken in every Prince Edward Island community.



"Music must take rank as the highest of the fine arts - - - as the one which, more than any other, ministers to human welfare."

The Eighth Annual Festival of Music

Sponsored By

The Prince Edward Island Musical Festival Association

Membership In Association

WILL BE HELD IN CHARLOTTETOWN

May 4th, 5th, 6th, 7th, 8th and 9th

ENTRIES CLOSE MARCH 1st

Get A Syllabus And Mail Your Entry Before The Closing Date

This Is Your Festival - - - Enjoy It By Participating

If You Would Like To Assist In The Work Of The Association, Join It Now

This Advertisement is generously sponsored by:

Co-op Super Market

Clarke Fruit Co. Ltd.

Arnfast Coal Co.

Reddin Bros.

Maritime Electric Co. Ltd.

This Organization is to be known as the Prince Edward Island Musical Festival Association. Its object is to hold an Annual Musical Festival with the purpose of discovering talent and increasing an interest in music. The officers of the Association shall be: Honorary President, President, Vice-President (one from each County), Secretary-Treasurer and two auditors. These officers shall be chosen annually by the Association from paid up members of the Association and shall continue in office until a successor has been elected.

The fee for Life Members is \$25.00, for Group Membership \$5.00, and for Individual Members \$1.00 a year. All memberships are due one year from the date you join. By joining in a group you have the privilege of naming five representatives from your organization to attend and vote at the Annual Meeting in June, and all general meetings held throughout the year. All applications for membership received up until March 1st will be printed in the 1953 Festival Programme.