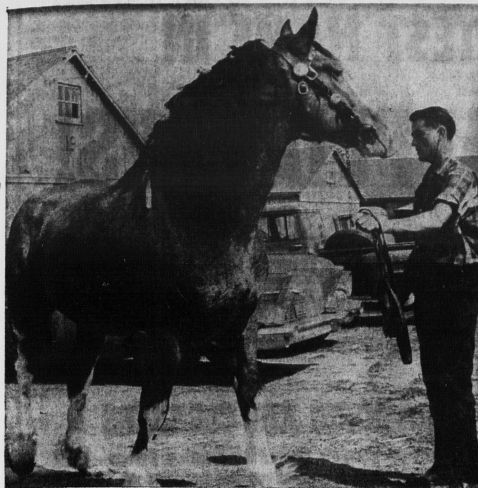


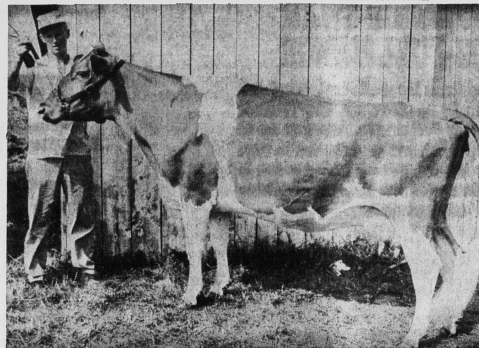
P. E. I. rural fairs and exhibitions provide showcase for outstanding products



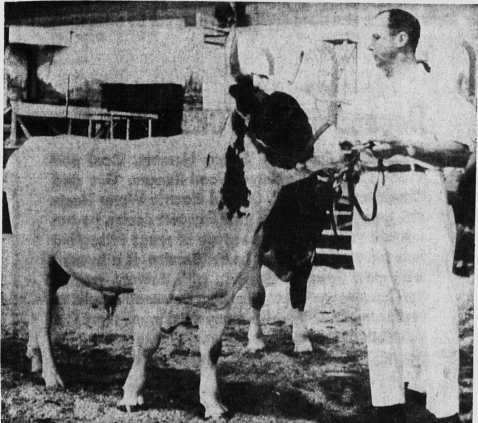
A MAGNIFICENT ANIMAL BUT COMPETITION KEPT HIM THIRD



FATHER-SON COMBINATION WAS A PRIZE WINNER



ONLY BEST ANIMALS SHOW AT WELL ATTENDED FAIRS



AGRICULTURE MINISTER MacRAE SHOWS HIS AYRSHIRES

More than \$5,000,000 is paid by the Canada Department of Agriculture annually in premiums on high grade hog and lamb carcasses.

There are approximately 2,800 named varieties of tree fruits under test at all Canadian research centers.

MOTOR REWINDING & REPAIRS
Storey Electric Ltd.
 136 Prince St., Ch. Town
 24-Hour Emergency Service
 DIAL 4-7841

Soil sample seen need for lime requirement

While most farmers realize that lime is essential for good crop production on the acid soils of Eastern Canada, many don't know the "lime requirement" of their land.

Dr. L.B. MacLeod of CDA's experimental farm here, says lime requirement is the amount needed to get the best crop production and to provide the most response from commercial fertilizers that may be applied.

For such specific information he recommends having a soil sample analyzed in a laboratory. There the staff can ascertain the sample's pH—the measure of its acidity or alkalinity. Experiments at Nappin on a

Tormentine sandy loam showed that optimum yields for a grass-legume forage mixture were obtained when the soil was limed to a pH of 6.2, reports the researcher. Forage yield, which was doubled by liming the acid soil (pH 4.8) to a pH of 5.5 and tripled by liming it to a pH of 6.2. There was no further increase in yield when the soil was limed to a pH above 6.5.

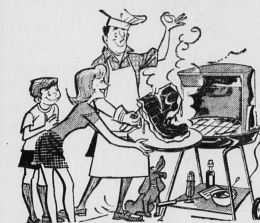
Legumes showed excellent establishment at a slightly lower pH range of 5.5 to 6.0 but the density of the established sward was greatest at a pH of 6.2 to 6.5.

Liming to a pH of 6.2 also cut the area covered with weeds by one half and eliminated the bare ground. The proportion of legumes in the harvested forage was increased by liming and further increases were obtained by the use of 0.20-20 fertilizer.

LIME MODERATELY

An application of 400 pounds of 0-20-20 fertilizer to unlimed acid soil increased the yield of dry matter by 300 pounds. The same application on soil limed to a pH of 6.2 increased the dry matter yield by over 1200 pounds. Thus the response to commercial fertilizer was three times greater after the soil had been limed first to a pH suitable for forage crops.

Pride is Part of the Purchase



Co-op members enjoy friendly attentive service at their Co-op. And they know they will receive full value for their shopping dollar, because all Co-op products are selected for them under rigid quality controlled procedures for their complete satisfaction. This is possible because Co-op members own their own business. The more they use it the more they benefit. That's why pride of ownership is a part of every purchase at your Co-op.

Co-Op Supermarket

Summerside

P. E. I.

NEW IDEA SPRING GREETINGS

POLLARD GIVES YOU Better Raking... Lowest Price!



POLLARD "540" gets all the hay, light or heavy. One wheel rake covers up to 7'3" swath. Raking wheel diameter 34" including tires.

POLLARD RAKES independent wheel action follows the ground contours, raking clean on uneven ground, on hillsides and in ditches. Gentle movement of the hay at all raking speeds cuts leaf loss 50%. They cost less to buy, less to operate and less to maintain.

ONLY POLLARD HAS...
 • Ball bearings in raking wheels
 • Lever lift to raise raking wheels
 • Economical single tooth replacement

POLLARD WINDOW TURNER SPEEDS DRYING—Two-wheel Window Turner fits most tractors—handles up to 4' windows. Speeds crop drying—straightens crooked windows. Same gentleness, same rugged construction as Pollard Rakes.

PROFIT WITH POLLARD

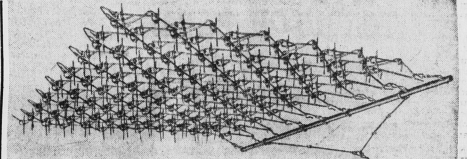
QUIET RUNNING! CONSTANT SPEED!

FIRST GROUND-DRIVEN RAKE WITH V-BELT DRIVE

TOTALLY NEW from NEW IDEA!

New parallel bar rake—drive direct from rear axle with special V-belt! Change reel speed with adjustable sheaves. Choice of 4- or 5-bar rake. Only 3 daily labor points. Rubber-mounted teeth available.

Ask us about the attractive low price!



Yes! We have the NEW New Idea spreader 95 bu.

The New Idea No. 17

USED SPREADERS New Low Prices!

Excellent selection of reconditioned and inspected spreaders ACT FAST! YOUR OLD SPREADER WILL NEVER BE WORTH MORE!

POPULAR 125 BU. SPREADER



SHREDS FINER with blade-me, triple staggered U-teeth.
SPREADS WIDE ... with uniform pattern. Has newly designed paddles with serrated edges. Ideal for top dressing with as little as 1 ton per acre.

LASTS LONGER ... 1 famous New Idea quality assures it will handle capacity loads. 5 feed rates, plus clean out or optional.

WATCH FOR THE NEW IDEA SIGN IN YOUR COMMUNITY

- George MacKay
- Harrington
- Russell Ching
- Souris
- Everett Nicholson
- Wiltshire
- Charles Willis and Son
- O'Leary

Maple trees take pills

WEST SPRINGFIELD, N.H. (AP)—Maple trees are taking pills for spring fever these days.

Given as you and I, sugar maples get tired of working when hit by the first warm breezes.

The farmers aren't taking pills. They feel fine. A bumper cash crop of maple syrup seems certain from the annual rite of "sugarin' off" in New England this season.

Farmers pop the magic little pill into the maples when they first drill a tap hole.

The pill makes the watery sap flow later in the season ensuring a longer "run"—as long as the combination of warm days and snappy nights lasts.

"I'm sure they help," says Kirk Heath. "I tested several hundred trees, marked them with paint. The trees with pills give more sap over a longer season." His sugar house is on land farmed by his family since before the U.S. revolution.

Farmers always have been puzzled when certain trees seemed to run dry. Federal and state agricultural experts studied the problem. They found that the flow of sap was slowed by the growth of micro-organisms in the wound caused by the drill hole.

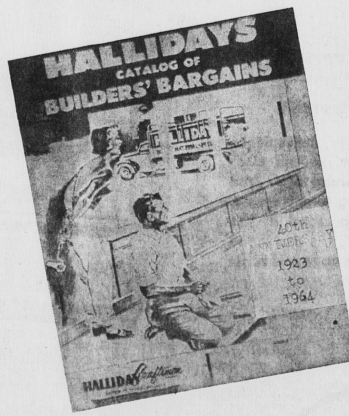
The pills act as germicides over the length of the "sugarin' off" season which in New England runs from late February through March and April, depending on the locality.

Any residue of the pill is boiled away in making syrup. Modern maple farmers such as the 85-year-old Heath have been able to stay in business only by abandoning most of the quaint and traditional ways of harvesting sap.

Manpower costs too much to unload individual buckets from several thousand trees every morning. Heath uses about six miles of plastic tubing to connect 3,000 hillside trees, so that the sap flows downhill to his collecting tanks.

USDS RADIO
 Certain trees flow earlier from parts of the hillside first, warmed by the morning sun. Heath uses walkie-talkie radios to talk to his men in the woods and route the flow of sap downhill into a freight dispatcher.

Have You Received Your NEW HALLIDAY Catalogue?



This new catalogue is jam packed with the greatest building materials buys ever offered. Send to our office for yours today.

HALLIDAY Craftsmen LIMITED
 ARTHUR ST., TRURO ... 4475

HALLIDAY STONING NEW GLASSBORO EASTINGTON SPRINGBURY
 Phone 4-4111 Phone 5-7111 Phone 2-2556 Phone 487-6411

If there is anything in Cultivating Equipment you require, do not hesitate to get in touch with us. The same will apply to Hay and Harvesting Machinery throughout the year and please remember that we have expert service for all our Equipment. Our Parts Department is bulging at the seams with service parts. This alone is worthy of your consideration. Give us a call or see the Dealer who is showing the NEW IDEA sign nearest you.

HALL MFG. CO. LTD. SUMMERSIDE, P. E. I.