

Skirts Only One Inch Shorter In Dior's New York Collection

By Dorothy Roe
NEW YORK (AP)—The shockers that Christian Dior likes to toss into the international fashion pot are notably missing from his New York spring collection.

ELLEN'S DIARY

By An Island Farmer's Wife

In a pre-dawn rite, with a morning star fading and before long a new day brightening the hills, the stove-pipes were given a cleaning by our early risers today...

Outstanding Ensemble

One of the outstanding items in the collection is an ensemble of a shiny sheer brown wool that looks like silk, used in a tightly-fitted princess dress and a tremendously full belted coat with gold-color lining and a deep back slash.

Highlight of the evening gowns is a strapless black taffeta gown with a huge Quaker collar of white organza—so austere as to be more dramatic than yards of ruffles and ribbons.

Household Scrapbook

By Roberta Lee

Biscuits
The biscuits will be light if only enough liquid is added to make a soft dough. Mix it lightly and just enough to combine the flour and liquid.

Brooms
The next time you buy a new broom try using it on both sides equally. Its usefulness will be prolonged as the straws will not get that curved shape that is so often experienced.

Morning Smile

The guide paused impressively as he brought the American tourist group to the high point of their excursion — an ancient European castle.

Easy's The Word For Spring Coats It's Straighter And Softer Look



The straight, rounding coat and the fitted coat make up the important silhouettes this spring. There's great variety in styling of the straight coat and even in the length. We show the fitted coat (left) in navy worsted with molded shoulder line. This Ben Zuckerman design has horseshoe collar, is single-breasted. Dress-and-coat ensemble (center) comprise one of spring's outstanding fashions. This particular design is by Mollie Parnis.

By Gaile Dugas
NEW WOMAN'S EDITOR
NEW YORK—(NEA)—Though the fitted coat is playing a return engagement this spring, the loose flared coat has undergone drastic changes. In its new form, it is straighter and slimmer, with rounded shoulders and sleeves.

with dress and coat in gray silk wool worsted alpaca. There's a pure silk lining in the coat. Dress is molded to the body. The seven-eighths length coat (right) in navy suede is an important spring silhouette, has binding of grosgrain and single rhinestone button at neck. This Ben Zuckerman design is lined in white taffeta. Such coats are worn with narrow, simple skirts. News in coat fabrics is the trend to those that are lightweight and crisp.

DOROTHY DIX'S COLUMN

A Romantic Indiscretion

Girl And Fiance At Odds Over Her Past Escapade

DEAR MISS DIX: My fiance is greatly disturbed over a matter which I think is none of his business. While away from home a few months ago I became infatuated with a young man, and he rushed me into an affair of which I am now heartily ashamed.

MAKE COMPLETE ADMISSION

ANSWER: While in most cases of an amatory error I believe the better part of discretion is to withhold some facts in your case I advocate complete admission. Your indiscretions were apparently too flaring, and will, furthermore, always suspect the worst—as you wouldn't.

WORRIED MOTHER

DEAR MISS DIX: I am 38 years old, the mother of five healthy children. Six months ago I lost my last baby, and nothing seems to give him a good home.

Miss Nissen cannot reply personally to readers but will answer problems of interest through this column.

Alice Brooks Designs



7000
by Alice Brooks
EDMONTON (CP)—Judy Adin 9, received a surprise when opening a box of Japanese oranges. Out flew a brown and orange-colored butterfly, wingspread about two inches.

That Body Of Yours

By James W. Barton, M.D.

BLOOD AND NERVE BUILDER, VITAMIN B 12, NOW TAKEN BY MOUTH

It is interesting to see how each of the vitamins has been regarded in turn as the head, chief, or most important of the vitamins. At one time, vitamin C was considered the important vitamin. At one time, vitamin B was considered the important vitamin because it prevented scurvy; then vitamin D as a body builder, especially a bone builder; then vitamin B and B complex as a blood builder; then vitamins to prevent abortion.

BETTER ENGLISH

By D. C. Williams

1. What is wrong with this sentence? "We continued on for the greatest part of an hour." 2. What is the correct pronunciation of "gnostic"?

ANSWERS

1. Omit "on," and say, "the greater part of an hour." 2. Pronounce nos-tik, o as in loss, accent first syllable. 3. Plebeian. 4. An attendant attached to a prince or other powerful person. "Every renowned person is surrounded by satellites." 5. Exorbitant.

Modern Etiquette

By Roberta Lee

Q. A woman I know is always using the expression, "my dear," when speaking with people. Is this considered good form?

A. It is all right, but it can be overdone, especially if used indiscriminately to strangers, as well as good friends.

Q. If a girl has promised a certain dance to a man, and the music begins, should she seek him out?

A. Never; it is the man's duty to find his partner as quickly as possible.

HOSIERY OF DISTINCTION
Nylotwist
by Chateau
EXTRA ELASTICITY FOR DURABILITY

Regina Girl Gets "Prize" Part In Christopher Fry Play

By Arch MacKenzie
Canadian Press Staff Writer

LONDON, (CP) — Diminutive Frances Hyland of Regina, picked for stardom by London's demanding drama critics, seems destined to join the Claire Blooms and Dorothy Tutins this year.

Marked with the indefinable something even the critics can't nail down, the blonde, 24-year-old girl from the wheat belt has won a "prize" part in what should be one of the events of the London theatre season. It's a new Christopher Fry play, specially written in three years for Dame Edith Evans, who takes the main role among a strong cast.

Theatre is admittedly a risky field for speculation. But Fry's "The Dark Is Light Enough" shapes as the logical vehicle on which Miss Hyland should ride to star status four jammed years after her professional debut.

"It's a part that—gr!" said Miss Hyland, clenching her small hands and her jaw. She's been served a meaty portion of Fry's verified wit and wisdom in his costume melodramatic comedy due to reach London early in April.

Since her debut in 1950 there's been time for just one week's holiday. The girl with the low, musical voice has strung together an impressive list of good and glowing reviews of work among London's most distinguished theatre people.

When Miss Hyland—or Franny—says this will be "my first really own big stage part, in a way," she means that her leading roles

in "A Streetcar Named Desire" and Sir John Gielgud's "A Winter's Tale" were taken over from other actresses.

In television, which she prefers for its "quiet, intimate and developing" techniques, she's appeared in five big British Broadcasting corporation dramas and won high praise.

Challenge To Critics

The critics grope for words in trying to assess her qualities. A sample verdict is TV reviewer Peter Black's speculation that her "unusual gift of forcing attention without apparent effort" lies outside her face, despite the high cheekbones, wide-set grey eyes and small chin in a sensitive face.

"Something rarer, a quality of feeling a part, which actresses can develop but not acquire," The Daily Mail critic decried.

Miss Hyland, whose witty, easy-flowing and expressive personality belies the inner tension that "tears me to pieces" in some parts, avoids such self-analysis.

20 Cigaretts Daily

She prefers to chat about a host of things, her likes and dislikes in theatre, "where I'm often cast to suffer nobly, although I've always thought I could make people laugh." She likes films, people, cricket and Canada—and 20 cigarettes a day unless she's in rehearsal.

Miss Hyland, a University of Saskatchewan graduate who attended the Royal Academy of Dramatic Art here on a scholarship, had to turn down a chance to appear at the second Stratford, Ont., Shakespearean festival with James Mason. Commitments permitting, she hopes to make the trip next year.

The Stars Say --

By Genevieve Kumble

For Tomorrow

TOMORROW'S vibrations are excellent for social activities with special emphasis on the entertainment of relatives or close friends. The aspects are beneficent, too, for making short trips or for participation in cultural hobbies.

In business or professional matters, do not let emotions interfere with your decisions. Haste and impulsiveness may seem to be called for where immediate desires are concerned, but long-term benefits depend upon careful analysis and consideration—especially where expenditures are concerned.

For the Birthday

If tomorrow is your birthday, your horoscope indicates that career advancement is definitely in the offing and that there should be a considerable improvement in your financial affairs by mid-summer. Family matters, personal relationships and travel are also

BACKACHE May be Warning

Backache is often caused by lax kidney action. When kidneys get out of order, excess acids and wastes remain in the system. Then backache, disturbed rest or that tired and heavy-headed feeling may soon follow. That's the time to take Dodd's Kidney Pills. Dodd's stimulate the kidneys to normal action. Then you feel better—sleep better—work better. Get Dodd's Kidney Pills now.

Hot-Water GINGERBREAD

Grease an 8-inch square cake pan and line bottom with greased paper. Preheat oven to 325° (rather slow). Mix and sift three times 2 c. once-sifted pastry flour (or 1 1/2 c. once-sifted all-purpose flour), 2 tps. Magic Baking Powder, 1/2 tsp. baking soda, 1/2 tsp. salt, 1 tsp. ground ginger, 1/2 tsp. ground cinnamon and 1/2 tsp. grated nutmeg. Cream 5 tbsps. shortening; gradually blend in 3/4 c. lightly-packed brown sugar and 1/4 c. molasses; add 2 well-beaten eggs part at a time, beating well after each addition; stir in 1/2 tsp. grated lemon rind and 1/2 tsp. vanilla. Add flour mixture to creamed mixture about a third at a time, combining lightly after each addition; gently stir in 3/4 c. boiling water. Turn into prepared pan. Bake in preheated oven about 45 minutes.

MAGIC BAKING POWDER Always Dependable

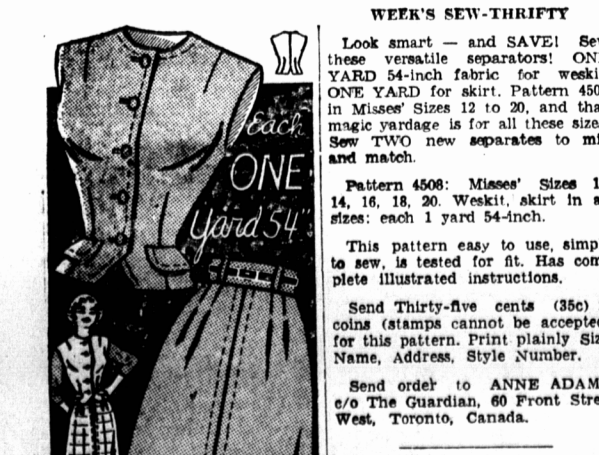
Children really enjoy food with

AYLMER CATSUP



YOUR FAMILY DESERVES AYLMER QUALITY

Anne Adams Patterns



WEEK'S SEW-THRIFTY
Look smart — and SAVE! Sew these versatile separators! ONE YARD 54-inch fabric for weekie. ONE YARD for skirt. Pattern 4508 in Misses' Sizes 12 to 20, and that magic yardage is for all these sizes. Sew TWO new separates to mix and match.

How Can I !!!

By Anne Ashley

Q. How can I remedy dresses that have become shiny?
A. Dresses which have become shiny should be sponged on the wrong side with borax and water.