

Business Ready To Resume In Flood-Threatened Town

EMERSON, Man. (CP)—Merchants have started returning stock to store shelves, preparing to resume business interrupted two weeks ago by the flooding Red River.

The river has dropped 1.61 feet from the peak it reached six days ago and flood coordinator Frank Muirhead said there is no danger to residents living on high ground in the town on the Manitoba-Minnesota border.

That was enough encouragement for merchants who had lifted or removed stock from their stores as a precautionary measure.

Garage owner Ted Walters said he has lost revenue of more than \$5,000 a week as a result of lost business. His shop is just behind the earth-and-sandbag dike that held back water up to 14 feet deep.

Mr. Muirhead said arrangements are being made for six grade 12 students to resume classes this week while other students will be back in their classrooms next week.

WATER TOO HIGH
He said the water was still too high to permit all residents to return because the possibility of heavy rain "cannot be ruled out." Most of the 930 residents left their homes in face of the danger of breaking dikes.

With the water receding throughout the Red River Valley south of Winnipeg, officials also decided to eliminate the daily flood briefings in Winnipeg and

to take down the special radio station direct-line hookup that had been carrying daily reports from various communities hit by the flood water.

At Morris, where dikes held back nine feet of water, coordinator Bob Wallace said the river continued to drop.

"It looks like we're home now. The crest seems to have passed, finally."

Dikes at Morris and St. Jean Baptiste, 20 and 26 miles north of here, were buffeted by strong winds and four-foot-high waves Sunday. Dikes at Morris held but a 60-foot section broke under the pressure at St. Jean.

About 25 homes were flooded as workers abandoned the north section of the dike in favor of facing the other weakened dikes with wood sheeting to act as wave-breakers.

The main section of the town of 350 persons remained dry as the railway tracks, which bisect the community, acted as a secondary dike and arrested the spread of water after the main level broke.

French Army May Remain In Germany

BONN (AP)—An informed source reported France and West Germany have agreed that French troops could remain in West Germany but that more talks are needed on their mission and status.

"This agreement came in a day of talks between Maurice Couve de Murville, French foreign minister, and Foreign Minister Gerhard Schroeder of West Germany.

At full strength there are 72,000 French troops in West Germany, most of them near the Rhine in the southwest.

French President de Gaulle has said that beginning July 1 they will no longer be under the North Atlantic Treaty Organization. The question then arose on what their status would be if they remained in West Germany and whether they would stay at all.

The source said Schroeder wants two things: The certainty that in case of war French troops will have a clearly defined mission under joint command and a new accord to define the status of the French troops in Germany.

Negotiations will not start before early May, the source added, because of the need for discussions among the NATO allies.

NET EARNINGS

By THE CANADIAN PRESS
La Luz Mines Ltd., four months ended Jan. 31, 1966, \$3,469,636, \$2.19 a share; 1965, \$1,679,709, \$1.06.

Fleetwood Corp., year ended Dec. 31, 1965, \$1,210,770, \$1.80 a share; 1964, \$1,113,159, \$1.66.

Robinson, Little and Co. Ltd., year ended Dec. 31, 1965, \$125,466; 1964, \$147,346.

East Sullivan Mines Ltd., six months ended Feb. 28, 1966, \$1,687,940, 39 cents a share; 1965, \$1,041,188, 24 cents.

Hastings Mining and Development Co. Ltd., six months ended Feb. 28, 1966, \$1,268,088, 25 cents a share; 1965, \$3,064,689, 61 cents.

Sullivan Consolidated Mines Ltd., six months ended Feb. 28, 1966, \$503,814, 13 cents a share; 1965, \$645,938, 16 cents.

Great Britain and Canada Investment Corp., three months ended March 31, 1966, \$180,242, 12 cents a share; 1965, \$182,962, 10 cents.

Niagara Structural Steel Co. Ltd., six months ended Feb. 28, 1966, \$95,267, 16.8 cents a share; 1965, \$55,606, 7.78 cents.

John Labatt Ltd., nine months ended Jan. 31, 1965, \$4,189,000; 1964, \$4,275,000.

Hinde and Dauch Ltd., year ended Dec. 31, 1965, \$1,757,380; 1964, \$1,877,566.

Braslian Traction Light and Power Co. Ltd., year ended Dec. 31, 1965, \$19,480,437, \$1.13 a share; 1964, net loss \$442,541, 4 cents U.S. funds.

DIVIDENDS

By THE CANADIAN PRESS
Peoples Credit Jewellers Ltd., class A 10 cents; common 10 cents; May 13, record April 29.

Scott Miesner Steamship Lines Ltd. 1st preferred 27 1/2 cents; July 15, record June 15.

Stelbergers Ltd., preferred series A 1.31; May 15, record April 26.

Ronalds-Federated Ltd., 12 1/2 cents; June 10 record June 1.

Stuart House International Ltd., preferred 12 cents; common 5 cents; May 1, record April 22.

DEAF?

INSTANT HEARING NOTHING IN EITHER EAR!!

It's here! What you have always wanted, an invisible hearing aid, nothing in either ear, no earpiece fitting of any kind. Wear this instrument and no one will ever know. Hear at once with clarity, free from disturbing noises. Here is a new technique, a new way to better hearing, a new hearing life for the hard of hearing, a new deal for the deaf. Prove this claim in your own home FREE by sending the coupon within 10 days to:

Maritime Hearing Service, Bayers Rd. Shopping Centre, Starlite Bldg., Halifax, N.S.

Name

Address



Just When You Need These... Here They are... at **LOWEST POSSIBLE PRICES!!**

ECONOMY

• WED. • THURS.
• FRI. • SAT.

DAYS

It's time to buy your boys new pants!

Boys' Casual Pants

Now that winter's gone, with Spring here comes the task of outfitting your boys once again. Look at the special low price and order right away. Neat tapered legs, smart no-cuff bottoms. Of wonderfully washable cotton chino. In black, blue or beige. Sizes 8-18. Reg. 4.49.

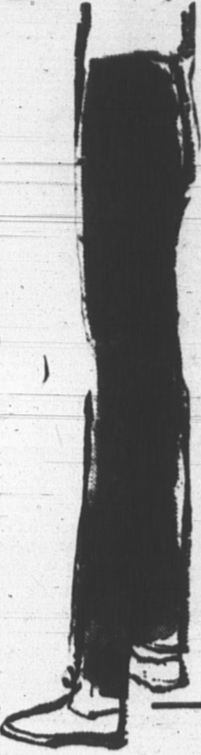
special **3.97**

Tailored by Kitchen Peabody

MEN'S WORK PANTS

Here's a name you can trust in the field of wear and good comfortable fit. Of long-wearing cotton drill, heavy duck pockets, men's work pants for dependable long life in spruce. Sizes 30-44. Reg. 4.98.

pr. **3.97**



Lovely styling! Lovely saving!

Ladies' Shift Dresses

So low-priced, snap up several. Perfect for casual wear at home, shopping or for tea. 1st quality American prints and myriad floral. Some attractive baby check Arnolds included. In pink, blue or navy. Sizes 10-20. Reg. 6.98.

SPECIAL **3.97**



Can you resist this tempting buy?

LADIES' BLOUSES

Good assortment of blouses in cottons, Terylenes. Short and 3/4 sleeves in a variety of coloured prints and plaids. Some sleeveless. Sizes 8-18. Reg. 2.98-3.98.

SPECIAL each **1.97**

Girls' All Weather COATS

Rainy day are here again. Save on your girls raincoats now. Several attractive styles from which to choose: some with full belt, straight back. Button to neck or neat turn-down collar. In red, navy, pink, beige, black or turquoise, sizes 8-14. Reg. 16.95.

SPECIAL **7.97**

Also teen sizes, 8-14. Reg. 19.95. SPECIAL **9.97**

Invest in the best!

Buy All Your Paint Needs

at Holman's and Save!

Velox Cream Separators

Your cream separator is in use every day, so why not invest in the very best for the price. The Velox is made in Sweden, simple, durable, efficient. Gleaming, rust-resistant stainless steel disc. Dependable electric model, no lubricating.

650-lb. cap. Reg. 249.95 — SPECIAL

209.97



SILLERS LATEX PAINTS

Made by Benjamin Moore and Co. Dries in less than 1-hour, with no odour. Makes it easy to paint a number of rooms in one day, in your home. Applies easily with either brush or roller. In 8 pastels & white. Reg. 1.98 — SPECIAL qt.

1.67

SILLERS QUICK-DRY ENAMEL

Made by Benjamin Moore and Co. Recommended for all walls, trim or furniture. Flows on smoothly, completely. Dries to a tough, hard, durable high gloss. In 10 lovely shades and white. Reg. 2.29.

1.87



SAVE 1/3

Factory Purchase 1966 Sunworthy Wallpapers

Precision-trimmed, guaranteed washable and fadeproof. Beautiful colors and patterns for every room in your home. Each double roll is 14 yds. long, which allows for wastage in matching. Ready or non-pasted. In room-let bundles of 5 and 6 double rolls. Reg. 3.60 to 10.85.

SPECIAL per bundle

2.37 to 7.27



Build Better, Easier! D. F. PLYWOOD

Large 4' x 8' sheets cut perfectly square reduce waste, cut building costs. Laminated with waterproof glue. Lightweight without sacrificing strength. Select grade, 3/16" thick. Reg. 5.39.

SPECIAL, sheet **4.17**

Standard grade, 3/4" thick. Reg. 10.49

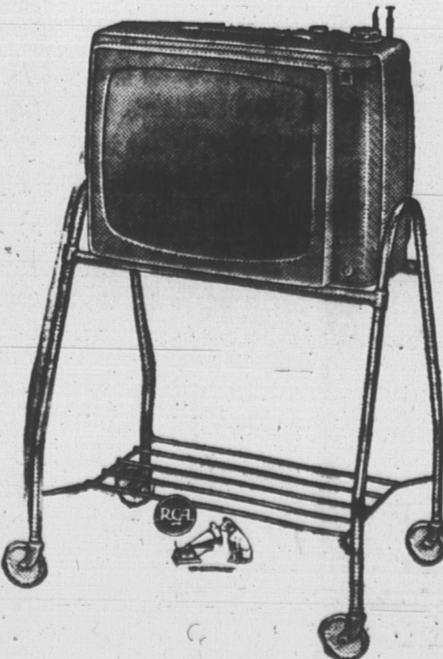
SPECIAL, sheet **8.97**

Deluxe RCA Victor TV with Free Roll-Away Cot

Enjoy perfect TV viewing with this powerful RCA Victor portable, even in fringe areas. This is made possible by RCA Victor's New Vista tuner, most powerful ever made. Featuring cool-operating "dark heater" tubes. The cooler the tube, the longer they last. Space-Age circuitry means dependable performance. Has built-in antenna.

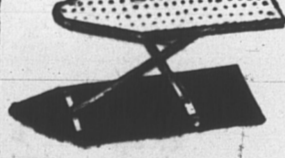
Reg. 229.95 — SPECIAL **199.97**

WITH STAND
NO DOWN PAYMENT, 11.00 MONTHLY.



ECONOMY DAYS BUY

IRONING BOARDS



Sturdy metal make, fully adjustable. Cool meshed top, sturdy double legs. Standard 54" size. Reg. 9.98

SPECIAL **7.97**

ENTERPRISE KEMAC RANGE

This range will cook all your meals and give best baking results ever. It'll help heat your home. Burns wood, coal or oil. Finished in acid-resisting porcelain enamel. Roomy storage drawer ideas for warming closet or cooking utensils. Reg. 299.95

SPECIAL **259.97**

TEX-MADE FITTED SHEETS

Famous "Homestead" quality. Extra fine woven cotton, 136 threads per square inch. Bed-making becomes easier, because "Elasto-Tex" corners hug mattress.

Reg. 3.57 — 39" x 75" SPECIAL, each **3.17**

Reg. 3.79 — 48" x 75" SPECIAL, each **3.37**

Reg. 3.98 — 54" x 75" SPECIAL, each **3.57**

2-BURNER HOTPLATES

6-way heat controls — new for 1966. In white enamel finish. Reg. 8.75

SPECIAL **6.47**

STEP LADDERS

Select Douglas Fir. 5' high. Reinforced steps. Reg. 5.98. SPECIAL **4.97**

WESTCLOX ELECTRIC CLOCKS

8" diameter. Easy-to-read dial. Mounts flush to wall, wafer thin. In white, sandalwood or turquoise. Reg. 7.98 — SPECIAL **5.97**

40-PC. DINNERWARE SETS

Myott's "Malinda" pattern, leaf pattern. 8 each of cups, saucers, 3" plates, 7" plates, 10" plates. Reg. 31.60 — SPECIAL **24.97**

CHILD'S STROLLER

Adjustable backrest and footrest. Plaid upholstery. Gleaming chrome body, and easy-rolling wheel. Reg. 12.95 — SPECIAL **10.97**

STARLON FLOOR COVERING

Hard-wearing enamel surface. Felt backed, 6' width, assorted patterns and shades. Reg. 1.29

SPECIAL, lin. yd. **1.07**

CRIB MATTRESSES

Buoyant spring-filled. Durable vinyl cover. 28" x 52". Reg. 10.95.

SPECIAL **8.97**

ALARM CLOCKS

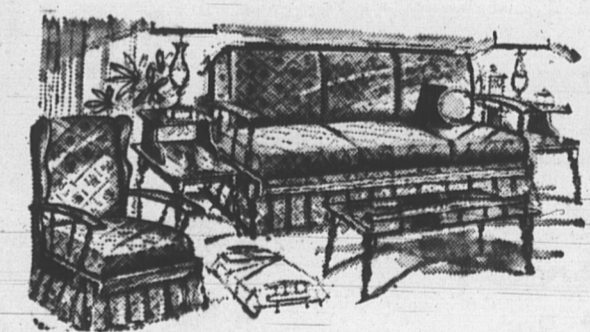
Famous "Silver Bell" model, guaranteed by Westclox. Reg. 2.79

SPECIAL **2.17**

GREY WOOL BLANKETS

Ideal all-purpose blanket, for camp, picnics, autos. About 47" x 84". Reg. 3.98

SPECIAL each **3.47**



Aah! The warmth and beauty of COLONIAL Settee and Chair

Here's a set that says: "Come relax, linger awhile." Your friends will admire the friendly atmosphere of your home. Solid hardwood frame and arms in attractive Salem maple finish. Durable, but resilient criss-cross rubber webbing. Features a reversible foam back and seat cushions. Tailored in a charming Colonial type patterned tapestry in beige and brown. Come see it, you'll love it. Reg. 169.95

SPECIAL

129.97

NO DOWN PAYMENT, 9.00 MONTHLY!

Act Now! 4 Days Only!



TONIGHT!

10.30 - CHANNEL 13
THE TELEPHONE COMPANY
PRESENTS ON "FESTIVAL"

"The Exquisite Twenties"

featuring the music of
STRAVINSKY
RAVEL
GERSHWIN
with
SEIJI OZAWA
conducting
the Toronto Symphony



The Island Telephone Company, Limited