

# SAVE-EASY QUALITY BRANDS SALE

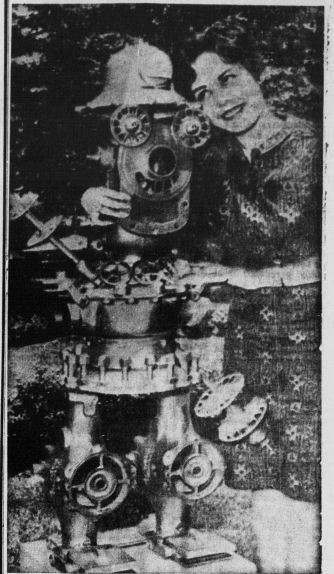
Sale Dates May 27 to 30

**LOIN**  
**PORK CHOPS**  
 GREEN GABLES  
**BACON**  
 FRESH FOR ROASTING  
**SIDE RIBS**  
**BEEF LIVER**  
**BUTT END**  
**PORK ROAST** 49

LB. 49<sup>C</sup>  
 AN ISLAND PRODUCT  
 LB. 59<sup>C</sup>  
 LB. 55<sup>C</sup>  
 LB. 37<sup>C</sup>  
**MAPLE LEAF CELLO PAK**  
**WIENERS** 45

Here We Grow Again

May 27  
 Woodlawn  
 Save-Easy  
 Dartmouth, N. S.



**MY HERO**  
 "Mr. Lancelotti" gets some cuddling from an admirer, Faith Vogel, in Pittsburgh, Pa. The object of her affection, fashioned from industrial values, is a sculpture exhibit in an outdoor arts festival sponsored by Carnegie Institute. (AP Wirephoto)

**FRESH EGGS**  
 GRADE "A" LARGE SIZE  
 PER DOZ. 31<sup>C</sup>

**Family Car Use Considered Top Threat To Travel Firms**

EDMONTON (CP) — Commercial transportation firms are engaged in all-out war against a mode of travel that accounts for nearly 80 per cent of the annual travel mileage in Canada — the family car.

A spokesman for the travel industry said recently that competition between rival transportation concerns has been side-tracked in favor of battles against the common enemy.

"Since air, rail and bus accounted for less than 15 per cent of the miles travelled last year, we'd be foolish to campaign against each other," the spokesman said.

The spokesman said cut-rate fares and travel schemes designed to provide maximum comfort and leisure with minimum effort and expense have slowed the trend toward automobile travel.

Greyhound Bus Lines led the assault with a catchy advertising slogan and other organizations quickly followed.

Canadian National Railway, with a fare plan that encourages travel on light-traffic days, and Trans-Canada Air Lines, with a plan to take the time out of travel, have pioneered attractions to lure travellers from the road.

In 1962, cars covered 85 per cent, air 12 per cent, bus 3 per cent and train 1.9 per cent.

Using an 815-mile trip from Edmonton to Vancouver and return as a basis, they said an individual travelling by car could expect to pay up to \$65 for the trip. That distance would cost a bus traveller \$25.95 return with an additional \$10 for food. Cheapest train rate, including meals and berth, is \$41 return. Basic plane fare is \$95 economy and \$60 first class for the return trip.

On an average of 30 miles to the gallon and 40 cents to the gallon, a motorist would pay about \$4 for gasoline. In addition, a night's lodging would cost up to \$15 and food up to \$10 a day.

Rail and bus travel have declined during the last 14 years while automobile and airplane made substantial gains.

The family car accounted for 86.5 per cent of all travel miles in 1960. Rail accounted for 14.1 per cent, bus 14.7 per cent and air 1.7 per cent.

In 1962, cars covered 85 per cent, air 12 per cent, bus 3 per cent and train 1.9 per cent.

6 Tall Tins  
**EVAPORATED MILK**  
 89<sup>C</sup>

AYLMER  
**CAT SUP**  
 5 11 OZ. BTL. \$1.00

16 oz. Jar  
**MANITO BUTTER**  
 45<sup>C</sup>

SARAN COVERED CHROME  
**LAWN CHAIRS**

Reg. Value \$4.89  
 Now Only 4.29

16 OZ. JAR  
**SUNSPUN**  
 35<sup>C</sup>

6 OZ. JAR  
**COFFEE**  
 93<sup>C</sup>

AYLMER FANCY  
**TOMATO JUICE**  
 2 48 OZ. TINS 69<sup>C</sup>

10 LB. BAG  
**WHITE SUGAR**  
 1.29

**WHITE SUGAR**

CHRISTIES PREM.  
**Sodas** 1 LB. PKG. 35c  
**Corn Flakes** 12 OZ. PKG. 29c  
**PINK SEAL PINK Salmon** 3 8 OZ. TINS \$1.  
**P. S. I. Soap** 4 BARS FOR 39c  
**GIANT SIZE Ivory Snow** ... 89c  
**GIANT SIZE DETERGENT Ivory Liquid** .. 89c  
**KEN-L RATION Dog Food** 2 26 OZ. TINS 45c

**BBG And CBC Heads Differ Over Advertising Revenue**

OTTAWA (CP) — The publicly-owned CBC should be operated on a non-commercial basis, leaving advertising revenue to private stations, says Dr. Andrew Stewart, chairman of the Board of Broadcast Governors.

Dr. Stewart made his suggestion in a report prepared for the government and tabled in the Commons by State Secretary Lamontagne.

However, CBC President Alphonse Ouimet, in a similar report for the government, commented "a retreat from advertising dollars by the CBC on the grounds that it would help the over-all private sector would not be warranted."

The BBG head said that in his opinion all advertising revenue made available by Parliament for direct support of broadcast should be applied to the CBC.

NO ADVERTISING

He added: "In principle, the public service should be operated on a non-commercial basis, leaving the market for advertising to a commercial means to support the private service."

Dr. Stewart gave three reasons for his proposal:

The CBC would have greater freedom in the way of serving the national interest if it were not obliged to seek programs that would sell commercially.

The CBC's commercial activities are a constant source of irritation to private broadcasters.

The CBC's administrative problems would be reduced if it would take this step immediately.

Unless compensated by a corresponding increase in public funds, the CBC couldn't maintain quality of the public service. So long as payments to private stations were made through advertising in CBC commercial revenues, it would be impossible for the CBC to discontinue its commercial activities.

Mr. Ouimet's report said that under present circumstances it would be neither practical nor desirable for the CBC to operate on a completely non-commercial basis.

**FRESH FRUIT**  
 FOR DELIGHTFUL EATING!  
 TEXAS IMPORTED

**CARROTS** 4 LB. CELLO 29<sup>C</sup>

Long Green **CUKES** 2 for 29<sup>C</sup>

Fancy Spy **APPLES** 3 lbs. 49<sup>C</sup>

Crisp **CELERY** 19<sup>C</sup> stalk

AYLMER CHOICE—20 OZ. **PEACHES** 31c  
 AYLMER FRUIT **COCKTAIL** 2 15 OZ. TINS 49c  
 RADIO CHOICE **PEAS** 2 20 OZ. TINS 37c  
 QUAKER REG. & BUTTERMILK **MUFFETS** 2 8 OZ. PKGS. 45c  
**MAZOLA OIL** 32 OZ. BTL. 89c  
 VALU PAK **PRUNES** 1 LB. CELLO 35c  
 NESCAFE INSTANT **COFFEE** 8 OZ. JAR \$1.29

OPEN THUR. FRI. SAT. NIGHTS  
**ELLIS BROS.**

**FROZEN FOODS**  
 FOR EASY-TO-FIX MEALS

**75<sup>C</sup>**

KOLD PAK—18 OZ. TUB **Strawberries** . . . . 39c

PERFECTION **Ice Cream** 1/2 GAL. 99c

NEW SUNNY **Orange Juice** 2 6 OZ. TINS 59c

TRY IT AT OUR DEMONSTRATION BOOTH  
 FREE BALLOONS FOR CHILDREN

