



MARIE BURGE

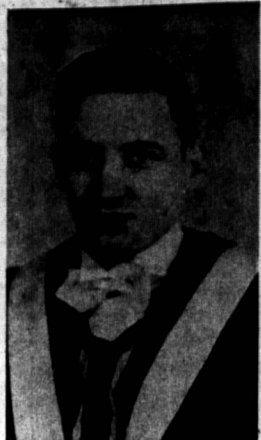
Anne Marie Burge was born in the thriving community of Five Houses, near St. Peter's Bay, P. E.I., on a beautiful summer night in July, 1938. She received her primary education at Fortune Road School, and her secondary education at Notre Dame Academy. Being quite apt in studies in her early years, she was promoted several grades and reached high school at a very early age. This, along with the fact that she took a combined course in Grade XI and XII, is the reason why she is the youngest member of her class.

In 1953 she arrived at St. Dunstan's to begin her course for an Arts degree. Here Marie was no stranger, for already her six brothers and sisters had attended or were attending the college. During her four years she has taken part in most student activities, and has been a valued member of her class—attested to by the fact that her classmates elected her their vice-president for life. Of a cheerful personality and ready wit, she had made many friends, who now join in wishing her success in the nursing career which she intends to pursue.

MARY CAMERON

Born January 3, 1935, Mary Gertrude Cameron, arts, has lived in Saint John, N.B., in Tignish and in Summerside. At the age of six she went skipping off to Tignish Convent with a copy of "Baby, Sally and Joe" under her arm. A few years later she proceeded to St. Mary's Academy and then to Summerside High. In the fall of 1954, having in the meantime exchanged her "Baby, Sally and Joe" for Caesar's "Gallic Wars," she entered St. Dunstan's as a Sophomore. Mary's quiet way and winning personality have, over the past three years, made for her many friends, both on and off the campus.

Not only has she been an industrious and conscientious student, but she has also taken part in such dramatic productions as "The O'Grady's and the Devil," "The Girl in the Rain," and "Antigone." Mary has held positions in the Dramatic Society, on the WUSC committee, and in the Sigma Delta Sorority, and whenever she was appointed to a committee we could confidently expect a good job well done. She is planning to enter the field of education, and is especially interested in working with mentally retarded children.



EDWARD BAIRD

Edward Joseph Baird, arts, was born at Webster's Corner on January 16, 1933; received his primary education in the district school and entered St. Dunstan's High School in the fall of 1949. Having completed his high school course, he entered the teaching profession, and after a period of year, he returned to St. Dunstan's to resume his studies on the university level. Over these four years his academic standing has been admirable, and his record as a member of the Dramatics Society executive for four consecutive years is something of an achievement. In addition to this task of directing the affairs of the Society, Eddie has found time to participate in some of their productions, which have been noted for their excellence in the past few years.

In 1956, Eddie was appointed business manager of the University's first year book, and in this particular venture he exhibited qualities of hard work, enthusiasm and self-sacrifice.

### Civic Debentures For High School Project

Owing to a regrettable error in the report of a special meeting Tuesday of the City Council the following is republished.

At the meeting a resolution was adopted accepting the tender of Syndicate composed of the Royal Bank of Canada, W. C. Pitfield and Co., Ltd., Royal Securities Ltd., Eastern Securities Ltd., and

Wood, Gundy and Co., Ltd., for the purchase of debenture for \$43,250 per cent at a price of 90.29 with accrued interest; and \$950,000—5% per cent at a price of 96.27 with accrued interest.

The bonds are to be non-callable, dated June 1st, 1957 and maturing June 1st, 1977. The tender is subject to stipulations as per their submitted tender contained in the syndicate's letter of April 17, 1957.

The resolution was moved by Councillor E. C. Johnstone and seconded by Councillor A. W. Gaudet. \$700,000 of the above money will be used for construction of a new High School on Longworth Avenue, and the remainder used for capital over-draft in the Royal Bank of Canada. A tender from a syndicate composed of Bell-Gouillon, Dominion Securities, and the Canadian Bank of Commerce was also received.

### Nfld. Commission To Open June 19

OTTAWA (CP) — Hearings of the royal commission on Newfoundland will open June 19 at St. John's, Nfld., the commission said Wednesday.

The three-man commission recently was appointed by the federal government to make a re-examination of the island province's economic status within Confederation, which it joined in 1949.

Appointment of such a commission by this year was one of the terms of Confederation.

The commission's announcement Wednesday followed the first meeting of the members, a private one. The members are Chief Justice J. B. McNair of New Brunswick, Chief Justice Sir Albert Walsh of Newfoundland and John J. Deutsch, head of the economics department of the University of British Columbia.

**IMMIGRATION UP**  
JERUSALEM (AP) — Nahum Goldmann, president of the Jewish Agency, said Tuesday immigration to Israel this year will hit a peak during May and June with a two-month total of 22,000. Goldmann told a press conference the figure is expected to return to its present average of 8,000 - 9,000 monthly after June. New arrivals this year are expected to total 100,000, the highest in six years.

### BENEVOLENT IRISH SOCIETY

#### ANNUAL MEETING

TONIGHT AT 8 P.M.

Reports of all Committees and election of officers

### HEAR

#### HON. PAUL MARTIN

MINISTER OF NATIONAL HEALTH

#### ON CFCY RADIO STATION

Speaking from

#### CIVIC AUDITORIUM, SUMMERSIDE

THURSDAY, APRIL 25

8:00 — 9:00 P.M.

Inserted by P.E.I. Liberal Association

### SHAREHOLDERS MEETING

A special meeting of the shareholders of the Farmers Abattoir Co. Ltd., will be held Friday afternoon at 2 p.m. on April 26, 1957 in the Canadian Legion Hall, 57 Grafton St., Charlottetown. It is very important that you attend this meeting because it will be the last one before operation begins.

FARMERS ABATTOIR CO. LTD.

### FUR STORAGE

PROTECT YOUR FUR and CLOTH COATS  
DIAL 6923

ISLAND FURRIERS LTD.

### Central Royalty Glee Club Dine Scouts And Cubs

The Central Royalty Glee Club held their Annual Father and Son Banquet for Scouts and Cubs on Tuesday evening, April 23rd. Due to the unavoidable absence of the Chairman of the Group Committee, Mr. Keith LeLacheur acted as Chairman for the occasion.

Grace was offered by Mr. James Currie. The toast to Her Majesty The Queen was proposed by the Chairman. Toasts were then proposed to the Founder of the Scouting by Troop Leader Ralph Bagnall and to the Fathers by Senior Sixer Ted Richard of the Cub Pack. The toast to the fathers was very ably responded to by Mal. M. E. Campbell.

The Chairman then welcomed the fathers and complimented them on their very fine turnout. He then gave a very impressive report of the Group during the past year and paid tribute to those responsible for these

achievements.

He then introduced the leader of the Scout Troop, Scoutmaster John Richard; the leader of the Cub Pack Mrs. Mary Richard; and the assistant cubmasters, Miss Doris Brown and Mr. T.I. Knox. A special thanks went out to others in the community who had helped us badge examiners, with testwork and providing transportation.

**SMART TURN OUT**  
The Chairman then concluded his remarks by introducing the Provincial Executive Commissioner, Mr. Gordon Kerr, who in a few short remarks paid tribute to the smart appearance of the Cubs and Scouts in their uniforms and to the great progress the Group had made which could only come from a progressive community.

The second guest to be introduced was Dr. George Fisher, District Commissioner for Boy Scouts, who paid a very fine compliment to the district in stating that the report of achievements of the group during the past year was the best of its kind he had heard for that year.

Previous to the Sing-Song conducted by Dr. Fisher, Mr. Norman MacLeod moved a hearty vote of thanks to the Group Committee of the Central Royalty Glee Club for the splendid banquet and the Women's Institute for the use of the hall by the Group in the past year. Pianists for the evening were Miss Helen Wilson and Mrs. W. E. Bagnall. Miss Wilson also favored the group with a vocal solo which was very much appreciated.

Following the sing-song, the Chairman then introduced the guest speaker of the evening, Mr. R. C. Parent.

In his address to the lads and dads, the Provincial Commissioner pointed out that this year in Scouting was known as the "B.P. Centennial" as it marked the 100th Anniversary of the birth of the Founder and also the 50th Anniversary of the Founding of the Movement. He then cited the other milestones and the years in which the Guides, Brownies and Cubs were formed. He highly recommended that every Scout, Cub and their parents should read the pamphlet on the life of Lord Baden-Powell so as to get better acquainted with the aim of the Founder.

**RESOURCEFULNESS**  
He then illustrated how Scouting teaches resourcefulness in demonstrating to the gathering the proper scout method of outdoor firelighting and cooking and the importance of knowledge of rope work and first-aid, along with the many other practical subjects the boys are taught.

He further emphasized the need for Scouts and Cubs to carry out Conservation and suggested a nearby site which could be cleaned up by the Group as a Conservation project.

In closing, Mr. Parent paid tribute to the fine leadership shown in the Group and passed on praise to the boys for their fine progress.

Prior to the close of the occasion, Scoutmaster John Richard thanked the fathers for their very impressive attendance and assured them that they had right to be very proud of their sons. He further thanked them for the interest and co-operation they had shown in the past as it made his task easier and hoped they would continue their help in the future.

### Coming Events

- Bingo Hope River tonight
- Dance Millview Hall, Friday April 26.
- Booking clover seeds, MacGulgan and Boyle Ltd.
- Pantry Sale at Moore & McLeod, Friday, April 26, Bonshaw W. I.
- Crokinole and Card Party, Cra-paud Hall, Thursday night, Lunch served.
- Dance every Thursday night, Cardigan Legion hall, Webster's Orchestra.
- Dance every Thursday night, Cardigan Legion Hall, Webster's Orchestra.
- Reserve May 13, for play by Kensington Community Club in Hunter River Hall.
- North Wiltshire Hall Friday, April 26, Basket Social and Dance by North Wiltshire Women's Institute.
- All taxes due New Haven School to be paid immediately as meeting is a month earlier by order of Trustees.
- Meeting Brookfield Cleaning Company, will be held in the Brookfield Hall, Saturday night, April 27, at 8 p.m.
- All taxes due Iona West School if not paid by May 15th will be handed in for collection. By order of trustees.
- Attention farmers—We are now custom cleaning grain daily at Charlottetown and Summerside Mills, P.L. Morris, Shur-Gain Feed Service Mills.
- Showing at Morell Friday, "SOLME," in Technicolor, starring Rita Hayworth, Stewart Granger, Charles Laughton. Show time 8 o'clock.
- Showing at Morell Friday, "Solome," in Technicolor, starring Rita Hayworth, Stewart Granger, Charles Laughton. Show time 8 o'clock.

### M. V. FERGUS

Weather and ice conditions permitting the motor vessel Fergus, will load general cargo and livestock for St. John's, Newfoundland at Charlottetown on Wednesday, May 1st.

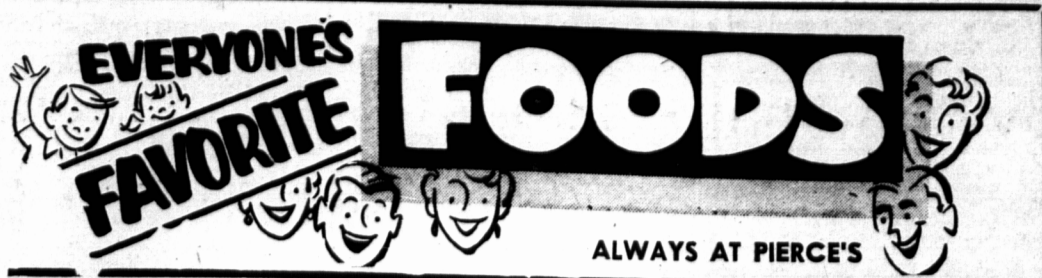
For space reservations and freight rates apply to—  
**GULF AND NORTHERN SHIPPING CO. LTD.**  
P. O. Box 232 Dial 8737

**SPRING IS HERE — GRASS IS GROWING**  
**BE PREPARED — TAKE ADVANTAGE OF OUR PRE-SEASON LAWNBOY SALE.**

REG. 89.95  
**SAVE \$15.00 ONLY \$74.95**



**F. A. S. JONES**  
128 KENT ST. DIAL 3188  
**DON'T GET A GOAT... GET A LAWN-BOY**



<b>FEATURING!</b>	<b>EXTRA SPECIAL!</b>
<b>BREAKFAST SLICED</b>	<b>FRESH COUNTRY STYLE SAUSAGE, lb. . . . . 39c</b>
<b>BACON, lb. . . . . 59c</b>	<b>SWEET PICKLED CORNED PORK, lb. . . 49c</b>
<b>JAVEX, 32 oz. . . . . 23c</b>	<b>FRESH OR CORNED RIB &amp; BRISKET BEEF, lb. . . . . 23c</b>
<b>CLARK'S OVENCROCK PORK &amp; BEANS, 2 jars . . 49c</b>	<b>BONELESS CODFISH, lb. . . . . 35c</b>
<b>LIGHT QUARTERS SHELLED WALNUTS, 1/2 lb. . . 35c</b>	<b>FRESHLY GROUND HAMBURG, 2 lbs. . . 59c</b>
<b>TASTY PAK PEAS, 2 tins . . . . . 39c</b>	<b>FIRST GRADE CREAMERY BUTTER, 2 lbs. 1.25</b>
<b>FRESH TASTY FIG BARS, lb. . . . . 29c</b>	<b>McCAIN'S (Maritime Made) FRENCH FRIES, pkg. 19c</b>
<b>GRAVES Molasses or T. Sauce</b>	<b>EAST PAK COD FILLETS, lb. . . 27c</b>
	<b>6 Tins 85c</b>
	<b>Jar 35c</b>

<b>Fruits &amp; Vegetables</b>	<b>JOHNSONS GLOCOAT</b>
Fresh Florida for Juice	<b>Pint 59c</b>
<b>ORANGES . . . . . 2 doz. 79c</b>	
Red Ripe	
<b>TOMATOES . . . . . pkg. 25c</b>	
Large Iceberg	
<b>LETTUCE . . . . . head 25c</b>	
Crisp Pascal	
<b>CELERY . . . . . 19c</b>	
Florida White	
<b>GRAPEFRUIT . . . . . 4 for 35c</b>	
<b>pierce's DIAL</b>	
<b>CASH &amp; CARRY 5524</b>	
	<b>Silver Seal Pure VANILLA . . . . . 25c</b>
	<b>Holly Hill—48 oz. tin GRAPEFRUIT JUICE . . . . . 33c</b>
	<b>Miracle Whip—Large 16 oz. jar SALAD DRESSING . . . . . jar 49c</b>
	<b>Nestles Chocolate Drink QUIK . . . . . lb. 65c</b>

## THE PROGRESSIVE CONSERVATIVE ASSOCIATION OF P. E. I.

PROUDLY PRESENT . . .  
**OUR LEADER**



**JOHN DIEFENBAKER**  
AT THE ROLLAWAY CLUB

**MONDAY, APRIL 29 AT 8 P.M.**

**EVERYBODY WELCOME**

**ALSO CFCY-TV AT 5:40 STANDARD TIME**

Inserted by the Queen's County Conservative Association