

H. M. SIMPSON LIMITED . . .

The **FIRST** Store Interior in P. E. I. COMPLETELY DECORATED in
"WALTEX"

MULTI - COLORED
PLASTIC PAINT

(INTERNATIONAL PAINTS . . . ARVIDA . . . MONTREAL, QUE.)

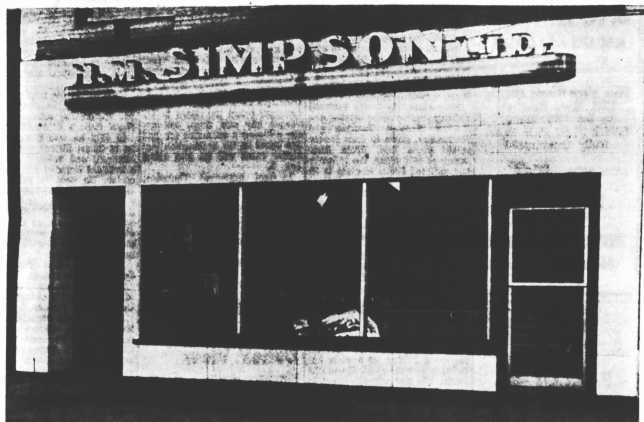
USED IN HOMES, SCHOOLS, OFFICES, HOSPITALS, INSTITUTIONS THROUGHOUT CANADA!

CHARLOTTETOWN and AREA DISTRIBUTOR

DOUGLAS BROS. and JONES LTD.

155 KENT STREET

PHONE 6565

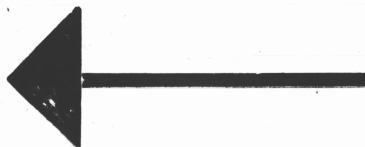


H. M. SIMPSON LTD.

138 GREAT GEORGE STREET

OFFICE FURNITURE - - - OFFICE SUPPLIES

FILING CABINETS



H. M. SIMPSON LIMITED

THE FIRST STORE EXTERIOR ON P.E.I. REMODELLED WITH

"SEAPORCEL"

ARCHITECTURAL PORCELAIN
ENAMELLED PAINTS

(GENERAL STEEL WARES LTD., LONDON, ONT.)

APPROVED APPLICATORS . . . COUNTY CONSTRUCTION COMPANY LIMITED

"WALTEX" APPLIED BY J. C. WEATHERBIE & SONS, 51 SPRING PARK ROAD -- PHONE 4076

HARDINE ENGINEERING AND SALES CO. LTD., MONCTON, N.B., MARITIME AGENTS FOR WALTEX AND SEAPORCEL!