

Strange But True

By F. M. MacArthur

The United States' first sculptured "man on horseback" was executed by Clark Mills (1815-1883), a green country boy who, after a hard youth as lumberman, farm hand, millwright, and what not, reached a place in the sun when he sculptured General Jackson (Washington), fittingly cast of old British cannon the hero had taken in the battle of New Orleans. It brought Mills \$12,000, a heap of money for those days.

Otis Arbuckle of Paris, Ill., thought more of his 12 dogs than he did of his relatives. So when he died recently he willed his pets an estate valued at \$40,000.

Now the relatives—not the dogs—are doing the howling. They maintain that the will's provisions are invalid and reveal incompetency.

The strange will provided that a caretaker gets the Arbuckle homestead in Paris rent free while taking care of the dogs. When the 12 animals named in the will are dead the estate goes to the Democratic National Committee.

Joseph Griffins and J. C. Madison of Waco, Texas, are growing their third set of teeth.

In northwest Florida there is a community named Two Eggs. The tiny village used to be called Alliston, but the name was changed by a couple of kids who made dally

trips to the general store at Alliston. The youngsters always took along two eggs to pay for the sweets they purchased.

The boys' bartering habits were common enough in this province not so very long ago. They had to have candy and as there was no extra money in those days for such luxuries, the farm lads put aside a few eggs which they traded at country stores for the sweets.

A news item from Wisconsin says that persons in that state's jails are let out to work during the day but they must sleep in their cells at night.

Working by day and spending the nights in jail was quite a common thing among prisoners in our own Georgetown jail up until comparatively recently.

I can recall the time when a friend of mine and I called at Georgetown jail to see one of its inmates.

You can imagine our surprise when the jailor informed us that our man was out working his farm, but would be back come night to spend his sleeping hours in the jug. That's the way our bootlegging friend served out his sentence of nine months. Just why this leniency was granted to prisoners of our local jail I am not prepared to say, but I do know that work during day and in jail at night cut down jail expenses.

Although George Washington laid the cornerstone of the White House and lived to see the bulk-

ing completed he never occupied it.

The White House owes its name to Martha Curtis Washington, his wife. For it was named "The White House" after the old colonial mansion home, where the first president of the U. S. A. claimed his bride.

The first lady of the White House was Mrs. Adams, who held the first New Year's reception there in 1801. Ever since the home of the president has been a palace of wives. The old palaces of European royalty have only too often been palaces of mistresses.

The Crystal Palace in London, England is made of glass and iron. From its high towers a splendid view of the great city can be had. It is 1608 feet by 384 feet wide across the transepts, and was opened when it was put up for the great London Exposition of 1851, when Queen Victoria opened the great hall in person.

What with the human life span increasing steadily, the time may eventually come when a person may live long enough to reach the age of discretion.

We owe our custom of eating three meals a day to the English during the reign of the first Queen Elizabeth.

UNIFORM STYLE

WINNIPEG — (CP) — Winnipeg School Board officials have decided to standardize the art of letter-writing in elementary grades. The move was made to avoid confusion caused by each teacher having a different style.

NATO Defence Effort Will Fall Short This Year, Survey Indicates

PARIS, Dec. 8 — (Reuters) — Defence preparations of the North Atlantic Pact for 1952 will fall slightly short of the goal set a year ago and will probably drop still further in 1953.

NATO's top permanent military body, the Standing Group, met here today to draft the official progress report.

A survey in all pact capitals shows that much of the committed strength of the pact has been diverted to combat Communism in the East.

The pact will hit its target of 25 active army divisions based in Europe and will have its required 25 reserve divisions, though these will be undermanned and under equipped. The call for 4,000 planes of all types will not be met, though the deficiency is expected to be small.

By 1953, the gap between goals and actual strength is expected to be about 16 per cent.

Main reasons for the shortcomings are increased diversion of Allied strength to the East, especially to Korea and French Indo-China; economy cuts in the rearmament programs of many member nations; and over-assessment of production possibilities when the plans were drawn up at Lisbon last February.

The Standing Group—representatives from Britain, the United States and France—will have its report ready when the staff chiefs of all 14 pact nations go into conference here Wednesday. The staff chiefs will in turn report on progress and other matters to the full session of NATO Council which will meet Dec. 15.

The over-all picture of NATO achievements, given by the official statements or reports from reliable government sources, breaks down like this: The United States—by far the biggest contributor to NATO in

all fields, she has supplied six divisions to Supreme Headquarters of the Allied Powers in Europe (SHAPE) and eight air wings, totalling about 500 planes. She plans no increase for 1953. Her over-all defence appropriation for the current year is 60 per cent of her total budget.

Britain—her five divisions, three of them armored, complete her ground force commitments to SHAPE and she will not increase them next year. Though the largest European air contributor to SHAPE, her quota will not be met this year or next. Her defence expenditure consumes about 35 per cent of her national budget.

France—twelve divisions, including reserves, will be under SHAPE and two more active divisions will be raised next year, fulfilling the quota. Her air strength of 28 squadrons will be increased to 29 next year. She spends 40 per cent of her budget on rearmament.

Canada—in addition to the 6,000-man Canadian brigade stationed in Europe, she has assigned two air wings to SHAPE and plans to add two more by early 1954. She spends about 50 per cent of her budget on defence.

Italy—A near miss in fulfilling all NATO targets is claimed because of shortcomings in deliveries of equipment promised by the U. S. She expects to have the strongest land army in Western Europe by next year, when she increases her 12 divisions to 15. Her air force is up to 275 planes.

Benelux—land contributions of these three states, Belgium, the Netherlands and Luxembourg, will be slightly understrength because Belgium has cut military service from two years to 21 months, and her 2 3/4 divisions will not be fully supplied.

Scandinavia — Denmark could



COMPLETE OUR CHRISTMAS JINGLE

To contestant completing the correct last line in this Christmas jingle, Semple's Pharmacy will give out merchandise to the value of \$20.00. The contestant supplying nearest to the correct last line will receive goods to the value of \$10.00, with \$5.00 worth going to winner No. 3.

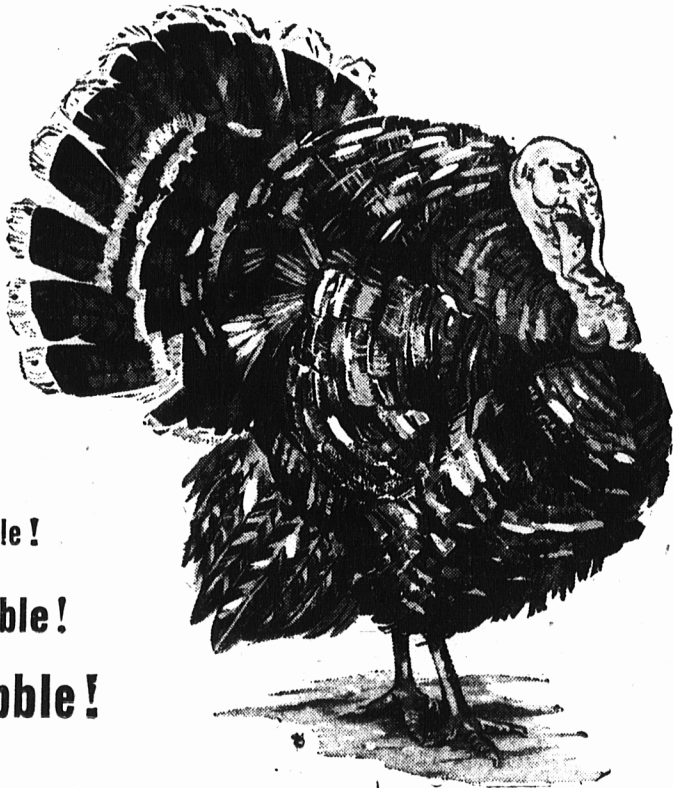
To enter this contest you have only to complete the last line and bring (not mail) your entry to their store, located at 178 Queen Street, Charlottetown. Contest closes Dec. 19th.

"If you will wed me, Maiden fair, Christmas gifts you'll have, I swear." "But where shall we buy 'em?" the maiden pressed. He

All gifts purchased during the Christmas season will be wrapped free of charge.

The decision of the judges will be final.

SEMPLER'S PHARMACY, YOUR REXALL STORE 178 QUEEN STREET



Gobble! Gobble! Gobble!

Here We Are Again With Our Annual Turkey Do!!

2 Great Big CHRISTMAS TURKEYS

FREE

To Lucky Christmas Visitors

Visit HOLMAN'S FURNITURE Dept.

Summerside or Charlottetown

AND CAST YOUR FREE BALLOT

There are gifts here for the six months to six year olds, for the sixteens to sixties. . . . Yes, Holman's Furniture Departments in both Charlottetown and Summerside are chock full of wonderful gift ideas! Come see for yourselves—and while you're here be sure to cast your Ballot for a FREE Turkey; every adult is eligible—the only thing you do is visit HOLMAN'S Furniture, write your name on one of the Ballots and deposit it in the Ballot Box . . . Who knows, this may be your lucky time AND you may win one of the big, fat FREE Turkeys!

GET FREE BALLOTS IN FURNITURE OFFICE

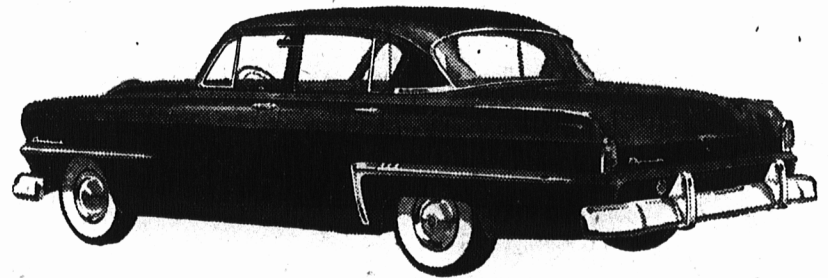
Drawing Takes Place Tuesday, Dec. 23rd - 4 P.M.

HOLMAN'S S' SIDE and CH TOWN

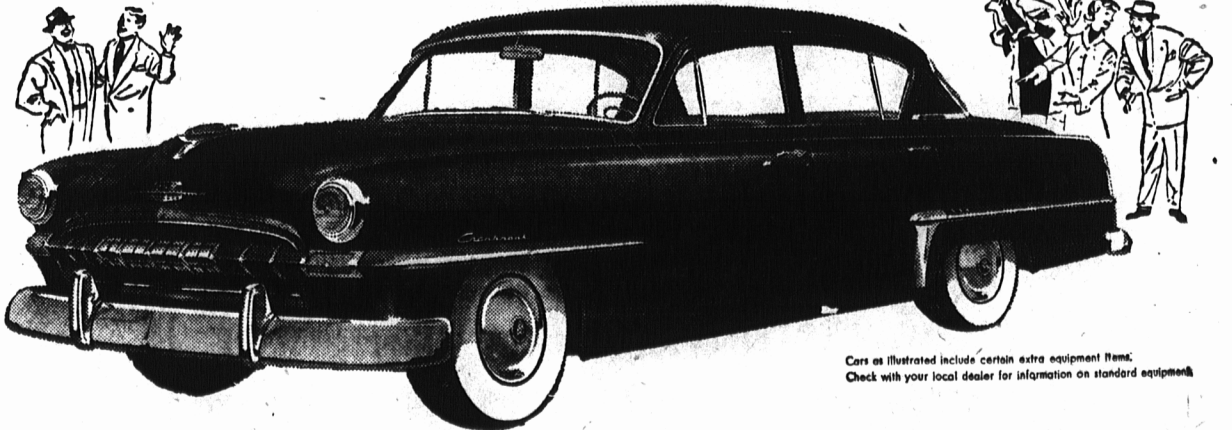
Surprise car of '53 PLYMOUTH

the Car with the Balanced Ride

*BALANCED AGAINST PITCH *BALANCED AGAINST ROLL *BALANCED AGAINST JOUNCE



Your new Plymouth is here . . . with scores of new and surprising features!



Cars as illustrated include certain extra equipment items. Check with your local dealer for information on standard equipment.

SURPRISING NEW COMFORT

The sensational new Plymouth BALANCED RIDE is by far the softest, smoothest ride you will find in any car of comparable price. The new Plymouth is balanced against pitch—against roll—and against jounce. Nothing like it has been offered before—even by Plymouth. And among the 21 new comfort features you will also find luxurious new interiors with 8-inch wider back seats—a huge luggage compartment with 30% more space for your travelling comfort—more legroom to stretch out, front and rear... and a host more.

SURPRISING NEW STYLE AND BEAUTY

Here again the new Plymouth is the car of happy surprises! 34 new style features to delight your eyes—longer, lower lines—air-streamed styling of the graceful fenders—newly designed grille and massive bumpers—new, smart instrument panel with centre glove compartment for easy access—broad, continental-type rear deck—rich new colours and beautiful roomy interiors make Plymouth an outstanding style leader in any company.

SURPRISING NEW PERFORMANCE AND SAFETY

38 new features in performance and safety alone. Many you can see—like the new one-piece optically designed windshield, which minimizes reflections—the full vision rear window—15.7% greater total glass area in all—the broad, low hood giving you wonderful road view. Many more you will feel the moment you take the wheel and drive . . . the amazing new ease in handling . . . wonderful road-hugging balance on curves . . . perfect control and highway safety. But you must drive the surprise car of '53 to realize how far ahead it really is in beauty, fine engineering and downright comfort.

SEE AND DRIVE THE NEW PLYMOUTH—NOW

CAMBRIDGE 4-DOOR SEDAN • SUBURBAN • CRANBROOK 4-DOOR SEDAN • CLUB COUPE AND CONVERTIBLE COUPE • BELVEDERE HARDTOP • SAVOY

NOW ON DISPLAY AT YOUR NEAREST CHRYSLER-PLYMOUTH-FARGO DEALER

Manufactured in Canada by Chrysler Corporation of Canada, Limited

F. R. McLAINE LTD.

12 QUEEN ST. CHESTER SELLER, HUNTER RIVER

CHARLOTTETOWN

MULLEN MOTORS, MT. STEWART

PHONE 860