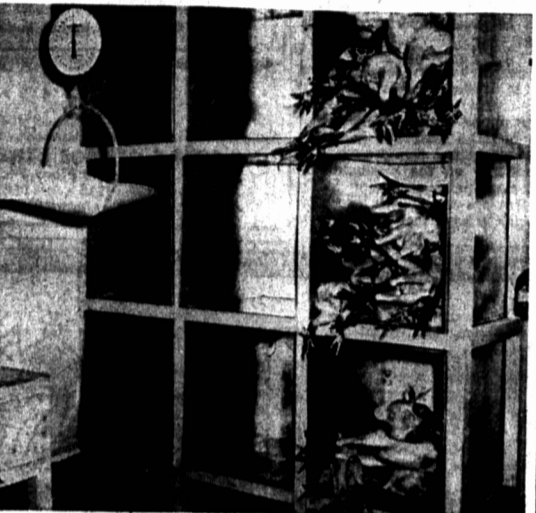
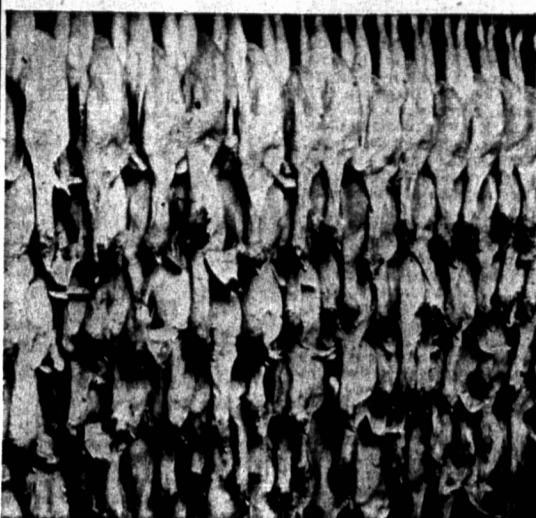


Waddell Bros. Poultry Plant To Open Today

Today marks the official opening of the Waddell Brothers registered Poultry Packing Plant at Crapaud. Built in 1956 and completed in September, the plant is the only one of its kind between Bedeque and Charlottetown. It is fully equipped with modern facilities to serve its patrons. The plant has a capacity of five hundred a day and will be receiving daily except Friday and Saturday. The poultry is brought in alive and the plant is provided with the very best of modern equipment to turn out a product ready for markets.

The Waddell Brothers, William and Lloyd, have complied with all the required government regulations in the construction and operation of this up to date packing plant and are now prepared to handle a large volume of business and to serve their many patrons. In conjunction with the Packing Plant, they also operate a Registered Egg Grading Station and Retail General Store.



WELL DONE

Waddell Bros.

We were pleased to have participated in the building of this plant.

Richard Ruthart

40 EDEN ST. DIAL 9452

INTERIOR OF NEW PLANT

Pictured above are two scenes new poultry packing plant which from the interior of Waddell Bros. opens today at Crapaud.

\$20 Pound For Champion Steer

CHICAGO (CP) — The grand champion steer of the 1956 International Livestock Exposition was sold Thursday for \$20.50 a pound, a record price.

The grand champion, a senior yearling shorthorn named P. S. Troubadour, was owned by Pennsylvania State University and was bred by Canadian-born financier Cyrus Eaton at his farm in Ohio. The steer weighed 995 pounds.

It will bring the university \$20,397.50. Prime steers sold on the regular Chicago market for a top price of 31 cents a pound. The steer was bought by the Greenbrier Hotel White Sulphur Springs W.Va. A spokesman for Eaton's farm said the mother of the prize-winning steer also bred at Acadia was purchased for \$1100 by the university in 1955.

The government of the Yukon Territory is conducted by an appointed Commissioner and Council of five elected members.

CONGRATULATIONS TO WADDELL BROS.

On The Opening Of Their Poultry Packing Plant. The Refrigeration Equipment Was Supplied And Installed By

STOREY ELECTRIC

175 GRAFTON ST.

DIAL 3237

ANNOUNCING

THE OFFICIAL OPENING OF

Waddell Bros. Poultry & Packing Plant

CRAPAUD

EQUIPPED TO HANDLE LIVE OR DRESSED POULTRY DAILY EXCEPT FRIDAY & SATURDAY

Lloyd Waddell

William Waddell



SALE WADDELL BROS.

CRAPAUD

MONDAY to SATURDAY

DECEMBER 3rd to 8th

FRUIT & VEGETABLES

- RED RIPE**
APPLES, doz. 39c
- LARGE FIRM**
CUKES, each 19c
- CABBAGE, lb.** 7c
- CARROTS, lb.** 5c
- CRANBERRIES, pkg.** 29c
- SUNKIST—288 Count**
ORANGES, 2 doz. 15c
- LARGE**
GRAPEFRUIT, lge., 3 for 25c

MEAT DEPARTMENT

- ROLLED OR SLICED**
BOLOGNA, lb. 25c
- SAUSAGES, lb.** 45c
- PICNIC HAMS, lb.** 57c
- SLICED BACON, lb.** . . . 69c

FRUIT CAKE "Makings"

- DATES, 3 lbs.** 29c
- CURRENTS, 11 oz. pkg.** 19c
- SEEDED**
RAISINS, 2 lbs. 49c
- SEEDLESS**
RAISINS, 2 lbs. 43c
- DALTON'S**
MIXED PEEL, 8 oz. 19c
- GLACE**
MIXED FRUIT, 8 oz. . . . 19c
- GLACE RED AND GREEN**
CHERRIES, 4 oz. 19c
- COCOANUT, 4 oz.** 15c
- WALNUTS, 4 oz.** 19c
- GUM DROPS, lb.** 39c

TOYLAND



OUR TOYLAND IS NOW OPEN!

We have a large selection of—Mechanical Toys — Sleighs — Wagons, etc.

OLD TIME VALUES!

THESE ARE CASH PRICES, AND GOOD ALL THIS WEEK. WE RESERVE THE RIGHT TO LIMIT QUANTITIES.

BUY NOW AND SAVE!

SUGAR 10 LBS. 85c

Molasses GAL. 1.09

Bring Container



3 LB. 79c

EXTRA SPECIAL



OGILVIE
 Orange or Cherry Almond
 Cake Mix
 Pkg. 30c

FRUIT CAKE MIX 25c

GROCERIES

- CLARK'S BEANS, 20 oz., 2 for** 39c
- BURFORD—20 OZ.**
PEARS, 2 tins 37c
- MILK, 6 tins** 83c
- SHINOLA WAX, tin** 39c
- PUREX**
TOILET TISSUE, 6 rolls . . . 75c
- CAMPBELL'S**
TOMATO SOUP, 2 tins . . . 25c
- BULK TEA, lb.** 75c
- MAXWELL HOUSE**
COFFEE, 5 cents off, lb. . . . 1.29
- BULK COOKIES, lb.** 37c
- PEPPER, 2 oz.** 15c
- ICING SUGAR** 11c
- IVORY SNOW, SUPER**
SUDS & SURF, pkg. 39c

DRY GOODS

- 51 GAUGE 15 DENIER**
NYLONS, pair 89c
 (LIMIT TWO PAIRS)
- lbex BLANKETS, pair** 5.95
- COTTON**
YARD GOODS 20% Off
- HEAVY**
MEN'S SHIRTS, sale . . . 3.69
- MEN'S COMBINATION**
UNDERWEAR 3.59
- MEN'S AND BOYS'**
JACKETS 20% Off
- LARGE SELECTION**
O'ALLS & JEANS 20% Off
- LARGE DISPLAY**
JACKETS 25% Off

GREAT SAVINGS IN MANY OTHER LINES

HARDWARE DEPT.

- ALUMINUM—Reg. 9.95—10.95**
ROASTERS 6.89
- WHITE**
CUP and SAUCER, 6 for 1.39
- LARGE TUMBLERS, 6 for** 89c
- CAPITAL BROOMS, ea.** 1.39
- GALVANIZED—50 FT. LENGTH**
CLOTHES LINES 35c
- HINGES — RAW OIL — TURPENTINE — PAINT**
VARNISHES — BATTERIES, ETC. ALL GOING AT
REDUCED PRICES.
- SHINGLES**
VEELOCK 5.69
- SPECIAL PRICES ON—
ROOFING, STARTER, SHEATHING PAPER,
PLASTIC CEMENT, ETC.

FOOTWEAR

MEN'S & WOMEN'S SHOES
20% OFF

MEN'S WORK BOOTS



EXTRA SPECIAL
5.00

SEE OTHER SPECIALS IN THIS DEPARTMENT.

FLOOR COVERING **20% Off**

REMEMBER, SALE DATES
 DECEMBER 3rd to 8th
 MONDAY to SATURDAY

WADDELL BROS.

FOR BARGAINS YOU KNEW IN THE GOOD OLD DAYS

CRAPAUD