

IN MEMORIAM

MRS. ELBERT N. HILL
The death occurred suddenly at the Prince Edward Island Hospital on Monday, December 29th...

CARD OF THANKS

Mr. Elbert Hill and Avonna wish to express their sincere thanks to all friends and neighbors...

Consumer Bills Down Slightly

OTTAWA (CP) — The amount owed by Canadian consumers eased slightly last November...

CARD OF THANKS

Mr. George N. MacPhee and family wish to thank their many friends and relatives for the beautiful flowers...

VITAL WATERWAYS

The waterways of Canada were the only means of access to and travel in the interior in the early days of exploration.

MANAGEMENT OPPORTUNITY

Fine opportunity for lifetime career in rapidly growing industry — Consumer Finance. No experience needed. Work in whatever location you choose.

TURNER FARM EQUIPMENT LTD.

Charlottetown P.E.I. 7349 Phones 7340

IN MEMORIAM

GEORGE N. MACPHEE

"Truly in the midst of life we are in death," was never better exemplified than on Tuesday, December 16, 1958, when George N. MacPhee, a young active man...

While driving his car on the highway he was stricken with a heart attack. He was almost immediately seen by friends; medical aid was summoned but all to no avail.

He was a well known and prosperous farmer of the South Shore District having lived there all his life. He was a staunch member and generous supporter of the New Dominion United Church. He was a member of the Official Board, and a member of the Choir for many years.

His passing will be a distinct loss not only to the church but in the many community activities where he was always willing to lend a helping hand when the occasion arose.

He was a supporter of the Liberal Party, as well as an active member of Serry L.O.L. Canoe Club and Abegweit B.L.P. Kingston. Only the night previous to his death he attended a Lodge meeting in Canoe Cove.

Left to mourn are his wife the former Jessie MacNeve, Canoe Cove, as well as five children, Anna, student at Prince of Wales College and three younger children, Sandra, Garth and Beryl, who will ever mourn the loss of a dutiful husband and father.

He was predeceased by his parents, Mr. and Mrs. Daniel MacPhee, life long residents of the District, as well as two sisters, Anna (Mrs. Daniel Livingstone).

MR. FARMER MR. FARMER

Now is the Time! Now is the Time! To get ready for your Spring Work—

Make your change now! Why go to unnecessary expenses repairing when you can trade your machine with so little in the difference.

TURNER FARM EQUIPMENT LTD.

Charlottetown P.E.I. 7349 Phones 7340

Table with 3 columns: Commodity, Price, Change. Includes items like Wheat, Flour, Sugar, etc.

TORONTO CLOSING STOCKS

Table with 3 columns: Stock Name, Price, Change. Includes various Toronto stocks.

TORONTO CLOSING STOCKS

Table with 3 columns: Stock Name, Price, Change. Includes various Toronto stocks.

TORONTO CLOSING STOCKS

Table with 3 columns: Stock Name, Price, Change. Includes various Toronto stocks.

TORONTO CLOSING STOCKS

Table with 3 columns: Stock Name, Price, Change. Includes various Toronto stocks.

TORONTO CLOSING STOCKS

Table with 3 columns: Stock Name, Price, Change. Includes various Toronto stocks.

TORONTO CLOSING STOCKS

Table with 3 columns: Stock Name, Price, Change. Includes various Toronto stocks.

TORONTO CLOSING STOCKS

Table with 3 columns: Stock Name, Price, Change. Includes various Toronto stocks.

Table with 3 columns: Commodity, Price, Change. Includes items like Wheat, Flour, Sugar, etc.

TORONTO CLOSING STOCKS

Table with 3 columns: Stock Name, Price, Change. Includes various Toronto stocks.

TORONTO CLOSING STOCKS

Table with 3 columns: Stock Name, Price, Change. Includes various Toronto stocks.

TORONTO CLOSING STOCKS

Table with 3 columns: Stock Name, Price, Change. Includes various Toronto stocks.

TORONTO CLOSING STOCKS

Table with 3 columns: Stock Name, Price, Change. Includes various Toronto stocks.

TORONTO CLOSING STOCKS

Table with 3 columns: Stock Name, Price, Change. Includes various Toronto stocks.

TORONTO CLOSING STOCKS

Table with 3 columns: Stock Name, Price, Change. Includes various Toronto stocks.

TORONTO CLOSING STOCKS

Table with 3 columns: Stock Name, Price, Change. Includes various Toronto stocks.

Table with 3 columns: Commodity, Price, Change. Includes items like Wheat, Flour, Sugar, etc.

TORONTO CLOSING STOCKS

Table with 3 columns: Stock Name, Price, Change. Includes various Toronto stocks.

TORONTO CLOSING STOCKS

Table with 3 columns: Stock Name, Price, Change. Includes various Toronto stocks.

TORONTO CLOSING STOCKS

Table with 3 columns: Stock Name, Price, Change. Includes various Toronto stocks.

TORONTO CLOSING STOCKS

Table with 3 columns: Stock Name, Price, Change. Includes various Toronto stocks.

TORONTO CLOSING STOCKS

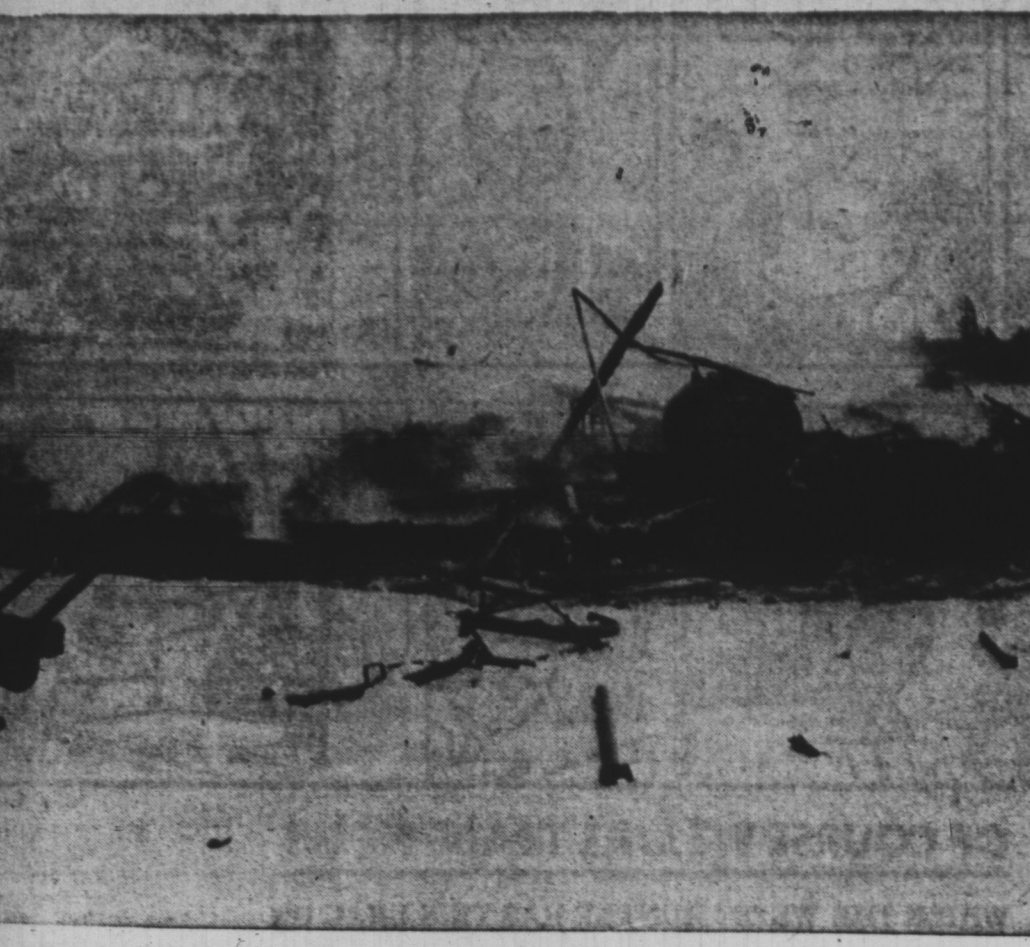
Table with 3 columns: Stock Name, Price, Change. Includes various Toronto stocks.

TORONTO CLOSING STOCKS

Table with 3 columns: Stock Name, Price, Change. Includes various Toronto stocks.

TORONTO CLOSING STOCKS

Table with 3 columns: Stock Name, Price, Change. Includes various Toronto stocks.



THE SMOULDERING RUINS

Large Barn, Livestock Lost In Alberton Fire

ALBERTON—Fifteen pigs, a cow, 25 tons of hay, a potato masher and several other pieces of farm equipment were lost in fire yesterday which destroyed a large well equipped barn owned by Sydney Hardy, Alberton.

The blaze, which originated from a blow torch being used to thaw a frozen pipe in the milking machine, spread with great speed through the loft and into a section of the building containing a large stock of animals.

After a fruitless effort to extinguish the fire, Mr. Hardy managed to save twenty-five cows and young cattle and two hogs. The horse was lying down apparently overcome by smoke and as it was impossible to get the animal on its feet it was shot by one of the neighbors who quickly arrived on the scene.

Part of the milker was also lost only the pails and units were brought out.

The Alberton Fire Dept. was called but the building was completely ablaze when they arrived. The barn was formerly owned by John Oliver, owner of Revco Daily in Alberton.

There is some insurance.

DAILY MARKET QUOTATIONS

Summary of market activity: Toronto Market higher, active... Montreal Market advanced, active trading.

CURRENCIES

MONTREAL (CP) — The U.S. dollar closed Thursday at a discount of 1-16 per cent in terms of Canadian funds, up 5-32. Pound sterling 22.72-5/16, up 7-16.

DIVIDENDS

THE CANADIAN PRESS Canadian Western Natural Gas Ltd., 4 per cent pd. 20 cents, March 31, 1959.

PRODUCE

MONTREAL (CP) — Agricultural department quotations: Eggs: Wholesale dealer cases, extra-large 39, large 35, medium small 31, B 32, C 23. Receipts:

GRAIN

WINNIPEG (CP) — Prices generally showed irregularity and were easier on the Winnipeg Grain Exchange Thursday. Dealers' closing prices:

TORONTO

TORONTO (CP) — Base metals showed a firm tone as the stock market recovered Thursday from Wednesday's losses. Trading was slow.

NEW YORK

NEW YORK (AP) — The stock market closed irregularly higher Friday a day after Wednesday's sharp break.

Brokers said some concern over the Federal Reserve would take additional tightening measures was a factor in Wednesday's weak...

SELLING-OUT SALE

MAMMOTH SHOE & CLOTHING SALE

Owing to ill health I am forced to dispose of the K & R Shoe & Clothing Store.

Entire stock of ladies', men's and children's shoes and rubber footwear, men's and boys' clothing. All new and up-to-date stock clearing at 25% discount. Balance of stock at 30 - 40 - 50% discount.

Men's Famous Ritchie Dress Shoes

Ladies' White Cross Shoes

Children's Savage, Health and Parisset Shoes

Tetrault, Greb & John Palmer Dress & Work Boots & Shoes, Wellington Boots.

To our many customers and friends we suggest for you to buy NOW and SAVE!

SALE STARTS WEDNESDAY, JANUARY 28, 1959

L. O. KELLY

158 QUEEN ST. CHARLOTTETOWN

TOP PERFORMANCE!

THE PIONEER R.A. Chain Saw

For The Cottage For The Farmer For The Lumberman

Whatever the need or occupation there is no substitute for the new R.A. PIONEER and we can prove it with an eye-opening demonstration.

Pioneer is the Chain Saw designed specifically for the Canadian wood cutting industry, and proven by 15 years of leadership. Pioneer has "proven quality" and reliability. It's Canada's best chain saw buy.

Available On Easy Payment Terms At -

DOUGLAS BROS. & JONES LTD.

PIONEER CHAIN SAW DISTRIBUTOR IN P.E.I. 155 KENT ST. DIAL 6565 CHARLOTTETOWN

ALSO AVAILABLE AT

R. T. Holman Ltd. Summerville Lorin Panting Wood Islands

R. T. Holman Ltd. Charlottetown Edgar M. Cannon Summerville

McGowan's Ltd. Kilmuir E. W. Turner O'Leary

Lloyd MacDonald Annandale Ralph Dickieson New Glasgow

A. S. MacSwain & Sons Morell Waddell Bros. Crapaud