

Glass Bottles Make Gains Over Tins For Soft Drinks

MONTREAL (CP) — Glass bottles may be on their way to cutting in on tin cans as the predominant containers for soft drinks, some Montreal business sources say.

About 1960, tin cans began to move up in popularity among soft drink manufacturers. One of their strongest selling points was said to be that consumers of the soft drinks did not have to pay deposits on cans—a condition that was necessary with glass bottles.

The bottle-makers are reported fighting back these days—the no-deposit, non-returnable bottle being a prominent part of their sales pitch. The old deposit bottle is, at the same time, being kept on the market.

The non-returnable bottle is lighter than the old ones used to be. It is said by bottle-makers to wear as well for purposes of the treatment to which the consumer is likely to put them.

OLD BOTTLE HEAVY
The old variety of bottle had to be relatively heavy because, being returnable, it was subjected to refilling at the soft-drink plant. This meant the bottle had to be stronger.

Allan's Beverages Ltd. of

Montreal, which manufactures carbonated beverages, says it has found that no-deposit bottles, which it has in use in Quebec province, are going over surprisingly well.

Allan's reports that one grocer wrote to the firm: "If the present selling price can be maintained, I believe the new bottles will cut into the tins."

A. B. Vita, vice-president of Allan's, said glass bottles have some advantages over tin cans. Among these assets is that the firm finds it does not have to resort to as much high-pressure selling to market beverages when they are bottled.

CAN SEE CONTENTS
Glass is the traditional container for beverages, said Mr. Vita, and it can be resealed. Furthermore, it lets the customer see what he's buying.

A main disadvantage, the Allan's executive said, is that the

bottle is heavier than the can. A case of 24 no-deposit bottles weighed 27 pounds, while the same quantity of cans weighed 19.6 pounds.

William Davidson, general sales manager of Dominion Glass Co., said there are cost advantages in non-returnable bottles. "Our information would seem to show that the packaged price for cans . . . in a case of 24 will be approximately 20 per cent higher than that for non-returnable glass."

Mr. Davidson said his company is pushing the new bottle "with a push, surprising success."

REAGAN GIVEN EDGE

MONTREAL (CP) — Mayor Sam Yorty of Los Angeles says actor Ronald Reagan appears to have the best chance of being elected California governor. Mayor Yorty, here as a guest of Mayor Jean Drapeau for the opening of Montreal's new subway system, said Mr. Reagan has started to move ahead of the incumbent governor, Pat Brown.

Helps You Overcome FALSE TEETH Looseness and Worry

No longer be annoyed or feel ill-at-ease because of loose, wobbly false teeth. **FASTTEETH**, an improved alkaline (non-acid) powder, sprinkled on your plates holds them firmer so they feel more comfortable. Avoid embarrassment caused by loose plates. Get **FASTTEETH** at any drug counter.

Liberals Seek Control Of Party Funds

TORONTO (CP)—The federal Liberal party is trying to increase control over its election campaign managers and fund raisers, a party official said here.

Mark MacGuigan, chairman of the policy committee of the Ontario Liberal party, told a policy conference of the Scarborough East Liberal Association that party officials are trying to work out ways of put-

ting election campaign committees under party control. "The leader (now) appoints a committee of his own friends and these people do all the running of the campaign."

"Since campaigns stress only part of a party's platform, the election platform often does not reflect the policies determined by party conventions."

"We can't entirely remove from the leader the prerogative of choosing the committee, but it is very important that some

way or another they be kept under the control of the party."

Mr. MacGuigan said moves to extend party control over fund-raisers will be aided by the report last week of the federal government's special committee on election expenses.

The committee called for full disclosure of campaign contributions, strict limits on election spending and government contributions to party election campaigns.

OPPORTUNITY IN 'THE NORTH

TOWN MANAGER

FROBISHER BAY, N.W.T.

Up to \$9,590

Plus Isolated Posts Allowances

Frobisher Bay, situated on Baffin Island, 1300 miles north of Montreal, has a permanent population of 1,600. It is served by a regularly scheduled airline, telephone and telegraph communications. Government housing, a modern school to Grade 12, a modern hospital, a bank, churches and recreational facilities are all available.

The duties consist of the administration of municipal services for the townsite and administering two major contracts, providing food and janitorial services to the Federal Government. Other duties are: to administer the town plan, zoning, building regulations, etc., and to allocate living and working accommodation to departments and agencies in accordance with Regulations, policies and procedures.

Further information and application forms are available at Post Offices, Civil Service Commission of Canada Offices, Canada Manpower Centres (formerly National Employment Services Offices).

Applications must be received by the CIVIL SERVICE COMMISSION OF CANADA, OTTAWA 4 on or before NOVEMBER 4, 1966.

QUOTE REFERENCE NUMBER 66-3017



NO SKATES FOR BARBARA

Mrs. Thomas V. King of Chicago hadn't been on skates for more than 10 years until she made a brief appearance on a television commercial last year. And that's surpris-

ing, because before she was married Mrs. King was Barbara Ann Scott of Ottawa, an Olympic figure-skating champion. Now she is still firm in her decision to give up skating altogether.

(CP Wirephoto)

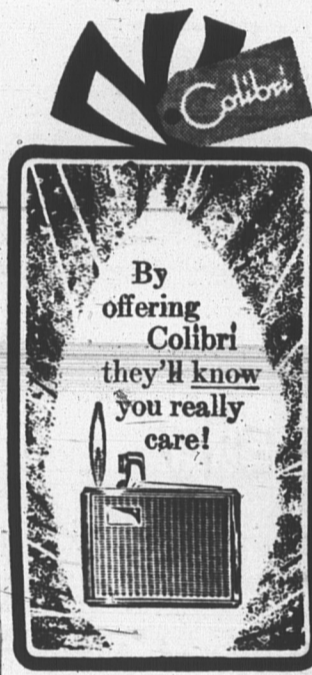
Diplomat Critical Of Kennedy

NEW YORK (AP)—A veteran US career diplomat, now retired, has criticized Senator Robert F. Kennedy's tour of South America, saying he could not imagine "a worse way to promote international goodwill."

Former ambassador Ellis O. Briggs said Kennedy spoke of the controversial Dominican Republic crisis "with loud forensic drumbeats" while State Secretary Dean Rusk "was at the same time tiptoeing across Copacabana beach doing his utmost not to arouse" Latin American foreign ministers meeting in Rio de Janeiro.

Briggs refrained from mentioning the New York Democrat by name but spoke of "a youthful senator" who toured several major Latin American republics last fall.

Briggs, in a speech prepared for a meeting of the Americas Foundation, said:



Values BIG! Selections BIG! Hurry to Holman's Today!

WARM WINTER WEARABLES



STORE HOURS: Charlottetown store — Open Thurs. and Fri. nights 'til 9:30 p.m. — Open Mon., Tues., Wed. and Sat. 9 a.m. to 5:30 p.m. Summerside — Mon. thru. Thurs. 8:30 a.m. to 5 p.m.; Fri. 8:30 a.m. to 9 p.m. Sat. 8:30 a.m. to Noon.

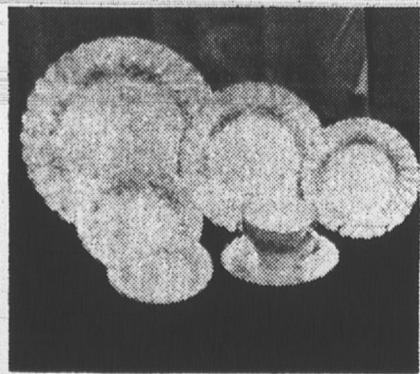
Just 12 More Days! Wonderful for Christmas Gifts!

128 PIECES

Service For 8

Only

39.97



Special Annual
October Sale!

HERE'S WHAT YOU GET:

● 56-Pc. Myott's Dinnerware Set

In the popular "Melody" pattern by Myotts of England. Dainty blue spray design decorates this dinner service which consists of 8 each cups, saucers, bread and butter plates, tea plates, dinner plates, cereals and fruits.

● 40-Pc. Chrome Plated Flatware

Consists of 8 each knives, forks, salad forks, teaspoons and dessert spoons.

● 32-Pc. Stemware Set

In an attractive spray cut design. Consists of 8 each goblets, sherbets, 5 oz. footed juice glasses and tierbet plates.

Two-Piece Pram Suits

100% Orlon pile. Elastic shoulder straps, snap on feet and mitts. Colours yellow, turquoise, pink blue and jade with contrasting trim. Sizes 18-24 months.

19.95

Toddlers' 2-pc. Snow Suits

100% Nylon, weather bar fabric, washable. Some with detachable hood, others have split hood and pile trim. Pants have adjustable shoulder straps and elastic foot strap. Colors Red, Turquoise, Brown and Navy. Sizes 2-3x. Just one of several styles at this low price.

16.95



Boys' and Girls' Snow Suits

Two piece style. Nylon, nylon quilt and nylon and cotton with pant to match. Rollaway hood, detachable split hood and some with pile trim. Pant has adjustable shoulder strap and elastic foot strap. Colors: Red, Turquoise, Royal, Brown and teal. Sizes 4-6x.

18.95

Girls' Coats

Different styles to choose from in houndstooth check with pile and velveteen trim, matching hat, other camel with plaid scarf and back belt, also orlon pile, side belted style. Colors Jade and Brown. Sizes 4-6x.

27.95

Girls' Coats

Three styles to choose from. Fur trimmed, loose fitting with pleat and half belt. Colors camel, red and brown. Also Orlon pile, with side belts, loose fitting. Quilt lining. Colors Jade and Brown. Sizes 7-14.

32.95

Girls' Storm Coat

Three quarter length. Plaid lined with attached hood, drawstring. Wool melton fabric in navy. Double breasted with inside zipper. Sizes 10-14.

19.95

NOW'S THE TIME to open a Holman's OPTIONAL CHARGE ACCOUNT

details at Customer Accts. Office.