

CHURCHES

(Continued from page 8)
MURRAY RIVER Pentecostal Church. Worship 11 a.m. and 7.30 p.m. Sunday School 10 a.m. Rev. Fred Dav, minister.

THE CENTRAL Kings Pastoral Charge, the United Church. Annandale Church: Worship: 11 a.m. St. David's Church: Worship 3 p.m. Church School: 2.00 pm Dundas Church: Worship: 7.30 p.m. Rev. M.R. Pocklington, minister.

THE PRESBYTERIAN Church, Sunday, January 23rd. Caledonia - Worship 11 a.m.; Peter's Road - Church School 1.30 p.m., Worship 2.30 pm; and Murray Harbour, North - Church School 9.30 a.m., worship 7.30 p.m. Rev. M. Carl Curcie, minister.

SOURIS - BAY Fortune United Churches. Worship at Souris 11 a.m. and at Bay Fortune 7.30 p.m. Rev. F.E. Phinney, minister.

MURRAY HARBOR - Murray River United Church Services, January 23rd as follows: Murray River Worship, 11 am. Church School 9.30 a.m. Little Sands Worship, 3 p.m. Murray Harbor Worship 7 pm. Church School 9:30 a.m. Rev. David Barwise, minister.

THE MONTAGUE Pastoral Charge, the Presbyterian Church. St. Andrew's, Montague: Church School 10 a.m.; Morning Worship 11 a.m.; Sermon Theme: "Good Grief" Evening Worship 7.30 p.m. Guest speaker on Alcoholism. Mid-Week Bible Study Wednesday, 26 at 7.30 p.m. St. Andrew's, Carigan: worship 2.30 p.m. Rev. Basil Lowery, BA, BD, minister.

DUNDAS - Annandale United Baptist Services, Jan 23. Lic. Myrtle Ingersoll, pastor. Dundas Church School 10 a.m.; Worship 11 a.m. Annandale Worship 7.30 pm.

MONTAGUE Pastoral Charge. The United Church. Services for Sunday, Jan. 23. 9.45 a.m., Lower Montague; 11 a.m., Trinity, Montague; 2.30 p.m. Sturgeon; 7.30 p.m. Adult Study Group in Trinity, Montague.

CORNWALL United Church Pastoral Charge. Minister Roydon Reynolds. Sunday, Jan. 23. New Dominion, 11.15 a.m.; Kingston, 3 p.m.; Cornwall, 7.30 p.m. Sunday School, Cornwall, 11 a.m.

MELTON - Rustico Anglican Parish. Rector, Rev. A.E. Piercey. St. John's, Melton. Morning prayer and sermon, 11 a.m.; St. Mark's, Rustico, evening prayer and sermon, 2.30 p.m.

UPTON Gospel Chapel, Sunday School 10 a.m. Gospel service 7.30 p.m. Speaker, Stanley Straight.

QUEENS

HUNTER RIVER United Church Pastoral Charge. Sunday, Jan. 23. Hampshire, Sacrament of Holy Communion 10.00 a.m. North Wiltshire 11.15 a.m. Hunter River 7.30 p.m. The Presbyterian congregation will join for this service. Mr. Clair MacLeod, preaching. Hampshire annual meeting Jan. 26 at 8.00 p.m. North Wiltshire annual meeting Jan. 26 at 8 p.m. Rev. Donald C. Powell, BA, BD, minister.

BROOKFIELD PASTORAL Charge, the Presbyterian Church. Worship: Harsville: 11 a.m. Glasgow Road 2.30 p.m. Combined Service in Hunter River United Church 7.30 p.m. Rev. Clair MacLeod, student minister. Rev. Basil Lowery, Interim-moderator.

THE PRESBYTERIAN Church, St. John's, Belfast. Sunday, Jan. 23. Service of Worship 11 a.m. Rev. Donald Nicholson, minister.

THE PRESBYTERIAN Church, Wood Islands. Sunday, Jan. 23. Service of Worship 3.00 p.m. Rev. Donald Nicholson, minister.

NORTH RIVER Baptist Pastorate. Jan. 23. North River 11 a.m. Clyde River - Worship 2.00 p.m. Sunday School 2 p.m. Kingston 7.30 p.m. Rev. T.W. Howard, minister.

FREE CHURCH of Scotland. Worship at Stachel 2 p.m. Rev. W.R. Underhay, minister.

MT. STEWART - St. Peter's Bay Charge, the United Church. Mt. Stewart: Worship 11.15 a.m. Senior Sunday School 10 a.m. Junior Sunday School 11.30 a.m. Morell: Worship 2 p.m. Sunday School 10.30 a.m. St. Peter's Bay: Worship 7.30 p.m.

ANGLICAN Church, Crapaud and Springfield. Sunday, Jan. 23. St. John's, Crapaud. Evening Prayer 2.30 p.m. St. Elizabeth's. (Continued on page 10)

COMMERCIAL PRINTING

Let us design your letterheads, bill heads, brochures; call us for all your printing needs.

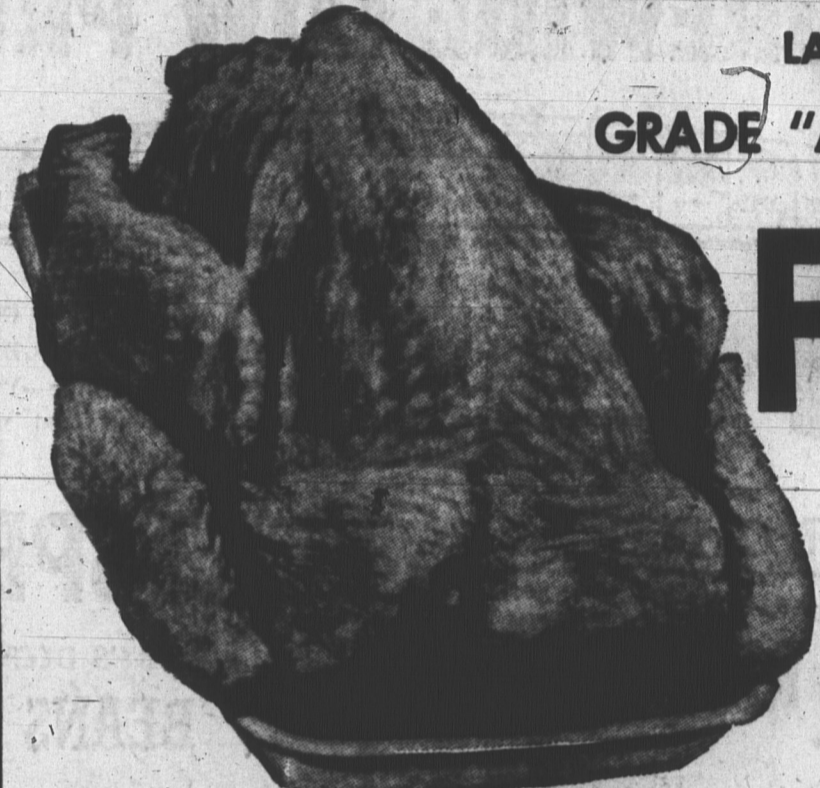
GUARDIAN-PATRIOT CENTRAL PRINTERY

PHONE 4-8508

Smart housewives bag these

FOOD BARGAINS

This Week We Take Pleasure in Welcoming
Verne Collicutt, Springfield West
In Joining Clover Farm Stores, The Island's Leading Food Stores



LARGE PLUMP
GRADE "A" OVEN READY

FOWL
49
LB.

CANADA PACKERS SHANKLESS SMOKED

PICNICS
49c
LB.

MAPLE LEAF
BOLOGNA
35c
LB.

REAL LEAN
GROUND BEEF
2 LBS. 89c

JUBILEE MAPLE LEAF
Beef Sausage 1 LB. PKG. 49c Potted Meat 12 OZ. TUB 35c

MONARCH
MARGARINE 2 1 LB. PKGS. 59c

OGILVIE
Rolled Oats 5 LB. BAG 69c

HAMILTON
Koko Rooms PKG. 49c

CLOVER FARM
Catsup 2 11 OZ. BOTS. 43c

CLOVER FARM
Cream Corn 2 20 OZ. TINS 43c

GRAVES (MOLASSES OR TOM. SAUCE)
Beans 2 20 OZ. TINS 47c

GEISHA
Baby Clams 3 10 OZ. TINS 1.00

KELLOGGS
Corn Flakes 12 OZ. PKG. 29c

G. E. 25 - 40 - 60 - 100 WATT
Light Bulbs 4 FOR 1.00

SANITARY NAPKINS
Kotex 2 PKGS. 89c

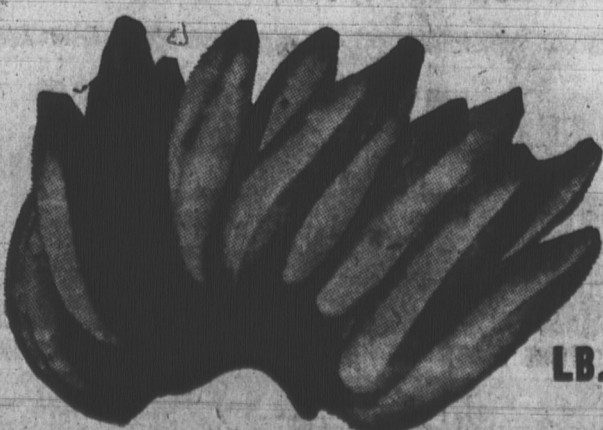
FIRM RIPE
TOMATOES LB. 25c

P. E. I. RUSSET
APPLES 5 LBS. 49c

ICEBERG
LETTUCE LGE. HEAD 25c

GOLDEN RIPE

BANANAS



19c
LB.

JOIN IN THE PARADE OF PAPER SPECIALS

VOGUE
TOILET TISSUE 8 ROLLS 69c

KLEENEX (MAN SIZE)
FACIAL TISSUES 2 PKGS. 65c

CLOVER FARM KLEENEX
Waxed Paper 100 FT. ROLL 33c Paper Towels 2 ROLLS 89c

CREAM of the WEST
or FIVE ROSES

FLOUR
25 LB. BAG

1.99

CLOVER FARM
MILK 6 TALL TINS 99c



PERFECTION
ICE CREAM 1/2 GAL. 99c

NOVA SCOTIA
SCALLOPS LB. 79c

Special Prices Effective Till Closing Time Saturday Jan. 22nd

FRENCH'S PREPARED Mustard 2 16 OZ. JARS 49c

VICKS
Vaporub JAR 59c

Clover Farm
Red Cup COFFEE 1 LB. BAG 89c

JOHNSONS
Paste Wax 11 1/2 LB. TIN 65c

B AND D
Humbugs or Minties 14 OZ. PKG. 29c

Heinz Tomato
SOUP 4 16 OZ. TINS 49c