



WHOLE STEER BARBECUED AT CARDIGAN

## Montague becoming increasingly popular

Tourist traffic to the Montague area has been on the increase from year to year with the 1964 tourist season perhaps the greatest in its history.

Added to the attractions last year was the three-day Strawberry Festival which included the Lower Montague Regatta, both events were considered to have been most successful. This year the regatta and festival will again run as the one event and it is expected that many more tourists will be in attendance.

Similar events will be staged with several improvements, as

well as new amusement ideas. The festival members are determined to have the best quality program that can be had and, they intend to build to this each year.

The Lower Montague Regatta, one of the most picturesque events to be held anywhere, will include all classes as in previous years, from snipe and other smaller craft to the large lobster boats.

Meals, home made, which will include salads, ham or chicken, strawberry short-cake and other home cooked delicacies have been attracting people to this

yearly event, and this year will be no exception with new arrangements being made to handle the overflow and to prevent a waiting line.

The tourist season will begin with the opening of the "Garden of the Gulf Museum" about the middle of June. The museum started by the Junior Board of Trade several years ago has been adding historical attractions each year and is now considered one of the greatest tourist attractions in Kings County. It also houses the tourist information bureau.

Trout fishing, a visit to the Cardigan Rearing Ponds, or a deep sea fishing trip will be one of the greatest events of a lifetime to the sportsman. There are many ponds, brooks, and rivers where the ardent fly fisherman can have a field day.

Over a million fingerlings and other fish are released from the Cardigan Rearing Ponds to streams in Kings County each year. This along with the natural habitat for such fish has left streams teeming with trout, both speckled and rainbow.

**SURPRISE SPOT**

Many tourists who have visited the area are surprised to find a place like Panmure Island beach which remains in its natural wild state with no crowding or traffic.

This beach has the open sea on the one side with sun bathing and a sandy beach, while less than 25 yards away is St. Mary's Bay with sandy beach, and shallow water for hundreds of yards. This beach is considered to be one of the safest areas in the province for children and beginners.

Between these beaches is a narrow causeway to Panmure Island. This is a natural sand causeway and once in living memory was cut in two so that residents had to drive in the sea to reach the mainland. The lighthouses in this area are another attraction to the area.

**WORTH SEEING**

Brudenell Island where a



YOUNG VISITORS ENJOY PONY RIDE, MONTAGUE

monument is erected to the pioneers of the area is also an attraction worth taking time to visit.

At Brudenell Point the remains of the De Roma Village can be seen and it is one of the more historic locations of the province. It is the hope of the tourist association here to have this village reconstructed and some assistance has been indicated, coming from government sources.

Camping and training has become one of the major attractions of the area. When other parks are crowded, Brudenell Park, Northumberland Park, and many private sites still can handle large numbers. More and more people are coming to these parks each year on recommendations from previous visitors.

The area has long been noted for its tourist homes, home cooking and hospitality. A group of golfers have made a start on the building of a nine hole golf course at Brudenell Park, which will add to the enjoyment of tourists visiting this area. It is expected to be in operation this year.

**PIONEER CUT OWN STONE**

The first commercial quarry in North America opened in 1785. Before then, pioneers did their own stone-cutting.

**PRUNE CRIME REPORTS**

Oso newspapers give no more than five per cent of their space to crime and sex, reports Norwegian criminologist Ragnar Haug.

**YOUNG DRIVE BADLY**

Drivers aged 19 and under have a disproportionate number of "non-collision" accidents—17.9 per cent, as opposed to other drivers' 7.7 per cent.

### DUNROVIN FARM

H. B. and K. Wood welcome you to vacation on the Island this Summer, and invite you to stay at **DUNROVIN FARM** in Victoria by the Sea, the heart of the Island on the warm south shore. Bring the children too... they will love the animals and have fun on the farm.

We serve garden fresh vegetables, products of our farm and Island seafoods with our home meals.

For information write, wire or phone.

**MRS. H. B. WOOD**

DUNROVIN, VICTORIA

P. E. I.

## Encourage outdoor living

The National Fitness and Amateur Sport program has invited every Canadian to try his hand at outdoor living.

Family camping is the latest subject for attention in the "How To" series of the Department of National Health and

Welfare, which administers the program Through films and instructional texts, the department is providing expert guidance on a number of sports and recreational activities.

The first showing of the Family Camping "How To" Kit was held in the Toronto area at the Skyline Hotel, near Malton International Airport.

The proceedings included the premiere of "Family Camping," a 28-minute colour film that shows the wide variety of pleasures offered by the Canadian outdoors—travelling by car or canoeing in Ontario's Georgian Bay, or trail riding in the Rockies.

Other sections of the kit offer hints on the practical side of camping, from pitching a tent to cooking over an open fire. Four colour filmstrips and a camper's manual, on these subjects and many others, were also unveiled.

The event coincided with the annual meeting of the Ontario Recreation Association, whose members will be present in force.



## WELCOME TO SUNNY P. E. I.

May your visit with us be a highlight of your year.

See us for sportswear for holiday fun

- Bathing Suits
- Skirts
- Slacks
- Lingerie
- Scarves
- Sweaters
- Shorts
- Blouses
- Gloves
- Dresses

## The Gloria Ladies' Wear

"Where Smarter Women Shop"

Gt. George Street

Charlottetown



WE SERVICE THEM ALL!

**GET STAY-AHEAD CARE**

When you drive in for gas, we check under the hood, tires, windshield wiper, etc. to "catch" troubles before they get big. Saves you money!

**SOUTHPORT ESSO SERVICE STATION**

Southport Dial 4-4136

Enjoy A Wonderland of Wild Animals visit the... **P. E. I. WILDLIFE PARK**



We welcome both tourists and Islanders to our fine display of wildlife. It is a pleasure for us to have it on display and we know it will be a pleasure for you and your family to view it.

Open Daily For Summer Season Drop In And See Over 100 Native Animals On Display.

# You Are Invited To Visit Our Hospitality Centres



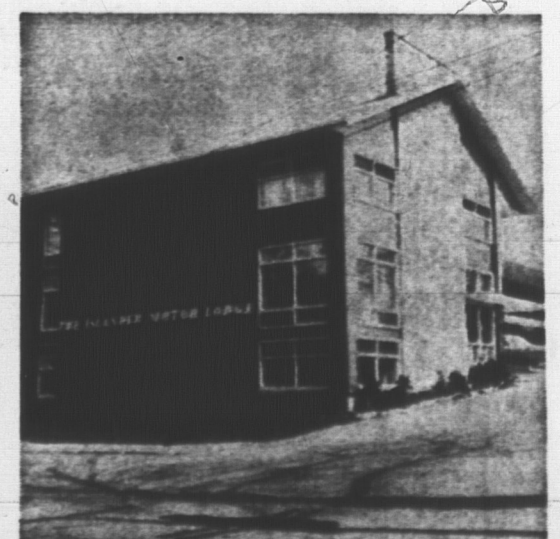
**PETER PAN**

Junction Trans Canada Highway and Malpeque Road, for the finest in refreshing snacks and meals.



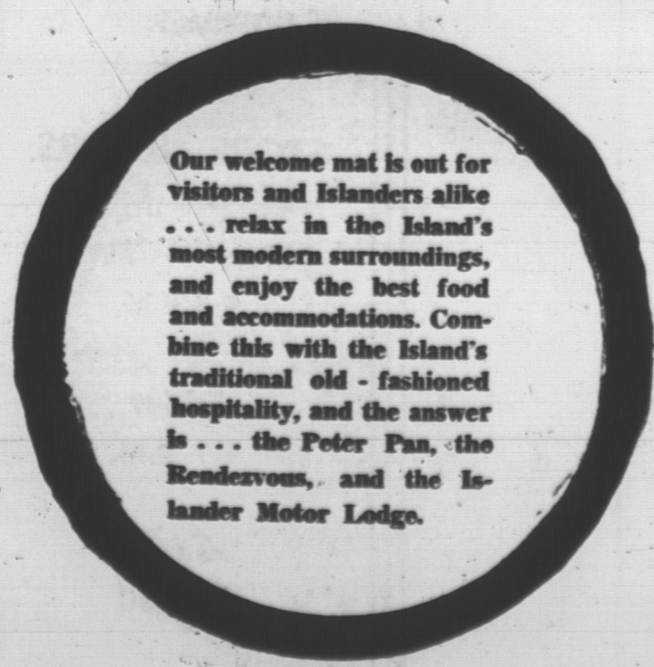
**RENDEZVOUS RESTAURANT**

Located on Kent Street for gracious dining and the finest Island food.



**ISLANDER MOTOR LODGE**

Pownal Street, Charlottetown, up-to-date living at the finest of motels.



Our welcome mat is out for visitors and Islanders alike... relax in the Island's most modern surroundings, and enjoy the best food and accommodations. Combine this with the Island's traditional old-fashioned hospitality, and the answer is... the Peter Pan, the Rendezvous, and the Islander Motor Lodge.

## The Peter Pan The Rendezvous The Islander Motor Lodge