



ISRAEL OBSERVES 18TH ANNIVERSARY

American-built 45-ton Patton tanks lead an armored column in a parade Monday in Tel Aviv where an estimated 400,000 persons lined the route for the military show and air-power display observing the 18th independence anniversary American Hawk missiles, left, also were shown. From left in foreground, are local commander (unidentified), Prime Minister Levi Eshkol, President Salomon Shazar, and Chief of Staff Rav Aloff Y. Rabin. (AP Wirephoto by radio from Haifa)

CBC Members Seek To Join CLC Union

OTTAWA (CP)—A total of 340 members or 66 per cent of the CBC's production unit in Toronto have signed application cards for membership in the Canadian Union of Public Employees (CUPE), the union has announced. Francis Eady, a CUPE official said more than 620 CBC cameramen, stagehands, script girls, production assistants, film editors and similar production employees across Canada have applied for membership in the union. In Montreal, CUPE has signed

up about 200 of 500 CBC production staff members. The production units now are officially represented by the International Alliance of Theatrical and Stage Employees (IATSE), also affiliated with the CLC. Mr. Eady said the Toronto region executive of the former IATSE local there is sending a message to all other similar CBC production units across Canada urging them to join the 95,000-member CUPE. **PROBLEM FOR CLC** A spokesman at CUPE headquarters here said Saturday that what was happening between IATSE and CUPE could be called "raiding, if you want to say it bluntly." The CUPE spokesman said the issue was certain to come up at the CLC congress now going on at Winnipeg.

NET EARNINGS

By THE CANADIAN PRESS
Levy Industries Ltd., three months ended March 31: 1966, \$591,347, 44 cents a share; 1965, \$222,861, 8.5 cents.
Sagmines Ltd., three months ended March 31: 1966, \$203,000, 7.3 cents a share; 1965, \$184,060, 3.9 cents.
Westfair Foods Ltd., year ended Jan. 1: 1966, \$2,150,216; 1965, \$2,001,168.
Thompson Paper Box Co. Ltd., year ended Dec. 31: 1965, \$73,553, 1964, \$66,638.
Imbrix Ltd., year ended Dec. 31: 1965, \$196,678, 26 cents; 1964, no comparative figures.
Allred Lumber Inc., year ended Dec. 31: 1965, \$454,600, \$3.03 a share; 1964, \$318,894, \$2.13.
Union Oil Co. of Canada Ltd., three months ended March 31: 1966, \$1,439,185, 30 cents a share; 1965, \$673,676, 19 cents.
Hudson Bay Mining and Smelting Co. Ltd., three months ended March 31: 1966, \$4,824,734, \$1.75 a share; 1965, \$3,300,382, \$1.20.
Dickenson Mines Ltd., three months ended March 31: 1966, \$93,503, 2.6 cents a share; 1965, \$218,831, 6.2 cents.
Superpack Corp., three months ended Feb. 28: \$35,082, seven cents a share; 1965, \$58, net loss.
Canada Packers Ltd., year ended March 26: 1966, \$8,521,000, \$7.10 a share; 1965, \$8,112,000, \$6.76.
Charter Credit Corp. Ltd., three months ended March 31: 1966, \$50,000, 17 cents a share; 1965, \$52,000, 14 cents.
Advocate Mines Ltd., three months ended March 31: 1966, \$730,489; 1965, \$93,070.

Kings County Progressive Conservative Headquarters
Former Legion Hall
Montague
Office Hours 9 A.M. to 6 P.M.
Phone 838-2779



4-DAY SUPER EVENT!

HANDSOME NEW STYLES!

Reg. 59.95 to 69.95

MEN'S SUITS



What perfect timing! You need a new suit, and here's a special quick-action Holman's buy to beat the band about. In rich plains, neat or herringbones, fabric of a fine worsted, long-wearing wool. You'll appreciate the comfortable natural shoulder models of these two and three-button suits, centre or side vents, with fashionable slimming no-pleat fronts. In sizes 35-44, regular or tall models. Choose yours from charcoal, blue, brown, olive or grey. But act quickly, 4 days only, at Holman's.

Reg. 59.95 to 69.95 values

49.97

SPECIAL

Another special grouping—Reg. 49.95 to 59.95

39.97

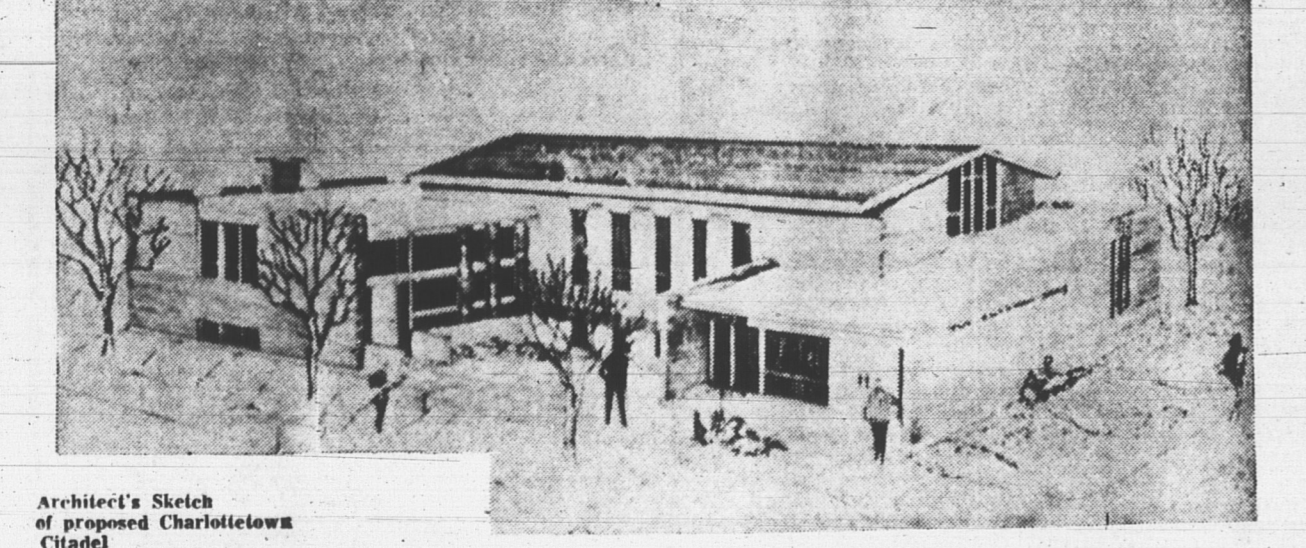
Free cuffing, too!



The Salvation Army

P.E.I. BUILDING APPEAL

Objective... **\$35,000.00**



Architect's Sketch of proposed Charlottetown Citadel

- PATRON**
Hon. W. J. MacDonald, E.D.
Lieut. Governor of P. E. I.
- HONORARY CHAIRMEN**
Hon. Walter R. Shaw
Premier of P. E. I.
Walter J. Cox
Mayor of Charlottetown
George A. Key, Jr.
Mayor of Summerside
Bruce H. Yeo
Mayor of Montague
- PROVINCIAL CHAIRMAN**
Brig. A. W. Rogers, E. D.
- PROVINCIAL TREASURER**
R. G. Boyne
- PUBLICITY COMMITTEE**
W. R. Burnett
W. R. Wheeler
- CHARLOTTETOWN CHAIRMAN**
W. R. Jenkins
- SPECIAL NAMES CHAIRMAN**
T. D. DeBlais
- GENERAL BUSINESS**
Mr. Clive Cudmore
Mr. Robert MacLeod
- EMPLOYEES DIVISION**
Alan Johnson
Jack Johnson
- CAMPAIGN DIRECTOR**
Colonel G. Best
- CAMPAIGN ORGANIZER**
Captain R. A. Nelson
- CHTOWN ADVISORY BOARD**
R. G. Boyne, Chairman
Capt. R. A. Nelson, Sec'y.
T. D. DeBlais
N. Stewart
G. Lewis
N. W. Lowther, M.M., Q.C.
D. Seales
L. Grant
A. A. MacLeod
- SIDE BUSINESS AND SPECIAL NAMES CANVAS**
Paul Schurman

General Business AND Employees Canvas NOW IN PROGRESS

For over eighty years The Salvation Army has been serving the people of Prince Edward Island. Anyone in need who has ever turned to them has been given help. The assistance offered has been both immediate and practical. The services performed by The Salvation Army are needed more today than ever before. New Welfare offices are to be included in the new Citadel shown above. These will cost with 1966 maintenance an estimated \$35,000.00. We feel the people of Prince Edward Island would want to assist The Salvation Army with this portion of construction costs—as a token of appreciation for over eighty years' outstanding service. This is YOUR opportunity to serve The Salvation Army. Give liberally to the Red Shield P. E. I. Building Appeal.

"HELP THE ARMY ATTAIN THEIR GOAL—ADD YOUR NAME TO THE CONTRIBUTOR ROLL."

HEADQUARTERS 176 - 178 GREAT GEORGE ST.
PHONE 2-2173

3 value-packed price groups!

BOYS' - YOUTHS' SUITS

An opportunity not to be missed. You can choose from neat checks, plains in wanted shades of blue, brown, green, charcoal or grey. Fabric is good quality wool-blend, smart single-breasted style with 3 buttons, centre vents and slimming no-pleat front. Smart and neat tapered legs, cuffed bottoms.

JUNIORS: sizes 6-10 — Reg. 19.95 Special **16^{.97}**

BOYS: sizes 11-16 — Reg. 24.95 Special **19^{.97}**

STUDENTS: sizes 16-20 — Reg. 34.95 - 39.95 Special... **29^{.97}**



Boys' Casual Pants

Tailored slim lines for a neat appearance. Has fashionable no cuff bottoms. Of sanforized cotton chino, regular or extended waistbands. Adjustable side tabs. In black, beige, blue, sizes 8-18.

Reg. 4.49 SPECIAL **3.97**



SPORT COATS

So good-looking, really good value at this saving price. In popular corduroy, or wool fabric. Semi-natural shoulders for the last word in comfort and good looks. Centre vent, new narrow notched lapels. In 2 and 3-button models, sizes 35-44, regulars or tall. Choose from grey, brown, bottle green.
Reg. 24.95 - 34.95

SPECIAL **19.97**

MEN'S CASUAL PANTS

Tailored slimline for a neat casual appearance. Neat tapered legs with no-cuff bottoms. Regular or extended waistband. Of machine washable cotton, sanforized. In plain or neat checks, black, olive, beige, brown. Sizes 30-42.
Reg. 5.98 - 6.98 — SPECIAL...

4.97 PR.

MEN'S NEW CORDUROY OR WOOL

SPORT COATS

7.97

MEN'S CASUAL OR WORK

Windbreakers

Such a versatile garment to have, you may want two, one for work and one for play. Of shower-proofed cotton poplin that wears so well. Dependable Lightning zip front, fully lined for best fit. Features snug knit collar and cuffs. Two smart slanted side pockets. In black, olive, pewter or beige.
Sizes 34-44.
Reg. 9.98 — SPECIAL

7.97

MEN'S WORK PANTS

Tailored and priced for the working man, by Kitchen Peabody. Of durable cotton drill. Fully cut for comfort and long wear. Heavy rugged duck pockets, cuffed bottoms. In forest green, sizes 30-44.
Reg. 4.98 — SPECIAL

3.97

ACT NOW! 4 days only!

