

CIMN 700

THE BEST ALTERNATIVE

Well after a confusing start, CIMN Radio is back on the air with new music to accommodate everyone's musical pleasures. Though we were unable to broadcast since July, we have now fixed some of the transmission problems that most of you have read about in the last issue of the Gem.

Bob Stanley, a veteran dj, and the chief engineer of the station, Mr. John Bentley reconnected the wires that had been cut during the restoration

of Main building. At this point, the men have connected the wires to enable the three residences to tune into CIMN on 700 am.

I'd like to take this opportunity to explain a little bit about the station for those who are unfamiliar with it. We are located on the third floor of the student union building, with about sixty dj's on staff. We have the ability to broadcast to three residences on campus, as well as to the cafeteria and to the pit in the library. Due to the damage to the equipment this summer, we are not broadcasting to the pit or to the cafeteria at this time. This will be rehooked up once the cable is reconnected. For right now though, we are content to be broadcasting to the residences only until the other matter can be overcome.

Our broadcasting day begins at 9:00am and is over at 12:00 midnight. This is a change from last year's hours (8:00am to 1:00am the following morning) but we feel that it will enable us to concentrate on quality programming rather than concentrating on the late hours

and the need to fill in the late shifts.

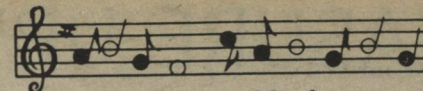
Throughout the day, you are able to hear eight different dj's and the music they play. At any point during the day, please feel free to make a request or a dedication. The numbers to call are 566-0417 or 892-8980. At CIMN the staff is able to play music without the restrictions of a tight format. Due to this, expect to find a diverse range of musical shows.

We are members of the student body playing music FOR the student body. Versatility is the key to a greater knowledge of music, and we feel that we are able to offer that kind of versatility. We are not like CFCY or CHTN when it comes to programming. We offer many types of music at different times throughout the day. Spotlights on featured artists, specials directed by a certain theme or idea are a few things that commercial radio is unable to provide on a daily basis. How often can you hear the Clash or the Dead Kennedys played on CFCY??

When thinking of the dj's, I'd like to thank those who have shown the dedication and the time that enables the radio to continue. They are showing their style of music to others hoping to share music as it is meant to be.

Despite the technical difficulties that we encountered during the previous weeks, members of the management worked hard to ensuring that once broadcasting resumed, it would be good.

Andrew MacDonald-
Operations Director



Tammy Manley
Interim Music Director
Steven Dunne
Advertising Manager
Michelle Pineau
On Campus Correspondent
Natalie Mutch
Off Campus Correspondent
Kevin Smith
Record Librarian

I'd also like to thank Scott Ferris and the Business Society for their support during the month of September.

In the coming weeks, there will be a schedule of shifts and music put in the Gem for those who would like to follow a particular type of music. Also, each week a Top 25 is compiled and placed in the Gem. This compilation is collected by having the music director read through the lists written up by the dj's

during their shows. The process of selecting the most popular 25 songs is very easy. Caller requests also play a role in this compilation. So, though the songs in the Top 25 are very different (alternative heavy metal, and top 40) they are the most popular choices of the dj's. Also you may tend to see some songs that are older or some songs that you have never heard before.

If you are interested in becoming a dj it really isn't very hard at all. All of the dj's are trained to use the equipment. Without any previous knowledge of radio broadcasting even YOU can be on staff at CIMN. Remember, CIMN is OUR radio station; why not become a part of it??

Rhonda McLellan
CIMN
Station Manager

CIMN's TOP Twenty Five

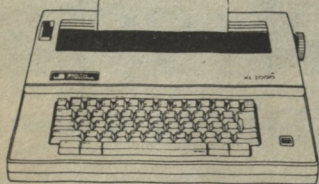
- | | |
|--|-----------------------|
| 1. Ordinary People | The Box |
| 2. Who's That Girl | Madonna |
| 3. La Bamba | Los Lobos |
| 4. I Will | Rock and Hyde |
| 5. Dance Desire | Haywire |
| 6. Strangelove | Depeche Mode |
| 7. Still Haven't Found
What I'm Looking For | U2 |
| 8. In the Name Of Money | Gino Vanelli |
| 9. Don't Mean Nothin' | Richard Marx |
| 10. Talk Dirty To Me | Poison |
| 11. Only In My Dreams | Debbie Gibson |
| 12. Wild In The Streets | Helix |
| 13. Hypnotize Me | Wang Chung |
| 14. U Got The Look | Prince |
| 15. Girls | Beastie Boys |
| 16. Teenland | The Nothern Pikes |
| 17. You Are The Girl | The Cars |
| 18. People Are Strange | Echo and the Bunnymen |
| 19. Still of The Night | Whitesnake |
| 20. Luka | Suzanne Vega |
| 21. Where The Streets
Have No NAME | U2 |
| 22. Yummy Moon | Tri Atma |
| 23. Addiction | Skinny Puppy |
| 24. Love is Contagious | Taja Seville |
| 25. Peace of Mind | The Grapes of Wrath |

This is the first Top 25 for this year from Cimn Radio. As previously explained, the compilation is done by reading over the dj's lists of music that they have played during their shifts. Accumulated lists then need to be read over and the top 25 songs (those who are on the accumulated list the most often) become the Top 25 of the week.

Obviously since we weren't transmitting last week, caller requests really didn't play an important factor in this process. Actually, nothing did except for the dj's lists. So, for those who are interested in the music that was played last week while you couldn't hear us, these were the most popular.

SMITH CORONA
TOMORROW'S TECHNOLOGY
AT YOUR TOUCH

**JUST WRITE
FOR ANY COURSE...
Smith Corona On Campus**



**XL 2000 Electronic Typewriter with
Spell-Right™ Electronic Dictionary ...
The Affordable Portable —
Perfect for Back-to-School**

- Spell-Right™ electronic dictionary checks spelling of 50,000 words.
- WordFind™ locates errors.
- Full line memory correction allows correction from one character to an entire line.
- WordEraser® removes an entire word with one tap of a key.
- Other features include bold print, auto return, auto center, auto halfspace, auto super/subscript, end of page warning, and more.

Save \$40.00 **\$309.95**
or Rent to Own
\$39.95 month (x9)

**XL 1000 Electronic
Typewriter**

Save \$30.00 **\$259.95**
or Rent to Own
\$34.95 month (x9)

Carter & Co. Ltd.
74 Queen St.

