

A Message From King's County

We, in King's County, are looking forward with keen anticipation to the 1954 Musical Festival.

Our number of contestants has increased each year and we are hoping to have, despite lack of teachers and transportation, a continued increase in entries this year.

We appreciate this opportunity to thank those who have given and are giving so much time and effort to this fine work of cultural and educational development in our Province.

To those who plan to participate as contestants in this year's festival of Music we wish the best of luck and may the same happy spirit of fun and enjoyment, that has been so much a part of past festivals, be very evident again this year.

Sincerely, GEORGIE HUME, Vice President for King's.

Adjudicator



ALFRED STROMBERS

Alfred Strombers, Halifax, N. S. Lecturer, composer, recitalist and accompanist.

Received his musical education in Riga State Conservatory, Latvia.

Did postgraduate work as conductor and coach in opera and ballet.

Musical Director of N. S. Opera Association.

Conductor of Halifax Symphonette.

Taught piano at Halifax Conservatory of Music 1948-1951.

Organist and Choirmaster at St. James United Church, Dartmouth, N. S.

Guest conductor in Canadian Ballet Festivals.

Studied last summer at the Berkshire Music Center under Leonard Bernstein, Charles Munch and Aaron Copland.

Hon President



DR. L. W. SHAW

A study of history convinces us that down through the ages music has been an integral part of community life.

In view, then, of this recognized importance of music in life, it is quite natural to find it forming a part of formal education.

I do not know, of any school system which does not include music in its programme of studies.

The Prince Edward Island Musical Festival Association has been and still is the encouraging and stimulating force urging towards a revival of music both in our schools and in the communities generally.

Director of Music, London Board of Education.

Consultant to Music Teachers College, University of Western Ontario.

Examiner for University of Western Ontario.

Director of Music in the new St. James Presbyterian Church, London.

Founder and Conductor of C. B. C. Choral Ensemble, known as the Earle Terry Singers, who have appeared on N. B. C. television, Carnegie Hall, and at Cleveland, Detroit, and other centres.

Commissioned by C. B. C. for special broadcasts such as the King's death Queen's birthday, Christmas, and Good Friday broadcasts.

Adjudicated at the P. E. I. Festival last year.

to greater and greater success in spreading this phase of true culture throughout the province.

L. W. SHAW, Director of Education.

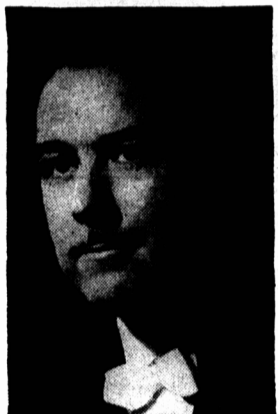
Musical Festival Association

Musical Festival Association

Honorary President - Dr. L. W. Shaw, Charlottetown. President - Dr. G. D. Steel, Charlottetown.

(Continued on Page 11)

Adjudicator



EARLE TERRY

Earle Terry, B. A., B. Paed., M. M., London, Ontario. Specialist in vocal and orchestral work.

Adjudicator, lecturer, and writer on musical matters.

Director of Music, London Board of Education.

Consultant to Music Teachers College, University of Western Ontario.

Examiner for University of Western Ontario.

Director of Music in the new St. James Presbyterian Church, London.

Founder and Conductor of C. B. C. Choral Ensemble, known as the Earle Terry Singers, who have appeared on N. B. C. television, Carnegie Hall, and at Cleveland, Detroit, and other centres.

Commissioned by C. B. C. for special broadcasts such as the King's death Queen's birthday, Christmas, and Good Friday broadcasts.

Adjudicated at the P. E. I. Festival last year.

to greater and greater success in spreading this phase of true culture throughout the province.

L. W. SHAW, Director of Education.

A Message From Prince County

The Prince Edward Island Musical Festival is playing an ever larger part in the cultural life of the province.

It is hoped that this arrangement will encourage many more competitors from the schools of the county.

Encouragement has been given to the Rural Male Quartette Class in the announcement of a special new Scholarship for this group of competitors.

Each Scholarship received encourages not only the volunteer workers of the Festival, but also the competitors who are eager for honors.

To all who have contributed - and to those who will do so before March 15th - our most sincere and grateful thanks.

EDITH W. GATES, Convener.

Percentage Allotment

The Percentage Allotment Committee of the Musical Festival Association will accept applications for financial aid from the sponsors of music in the schools.

Applications should be made at once to MARY DONAHUE, 10 McGill Terrace, Charlottetown.

(Continued on Page 11)

Concerts

The highlight of the Festival is of course the final Grand Concerts and fortunate indeed are the contestants or Ensembles who succeed in making more than 80 marks, as it is from this enviable group of winners that performers are chosen to make up the popular closing programmes.

In earlier years, when our festival was smaller, it was possible to have the winners from every class participate in these final concerts but owing to the extremely rapid growth of the Festival, another method of selection may soon have to be devised so that the closing programmes may not prove too lengthy.

(Continued on Page 11)

Scholarships

The Scholarship Committee takes pleasure in reporting excellent progress with obtaining donations of Scholarships for the 1954 Festival.

We had hoped to have a complete list of Scholarships ready for publication in today's press. This has not been possible, however for in some instances while we have been assured of the contribution, it cannot be officially acknowledged until it reaches the hands of our Festival Treasurer.

Encouragement has been given to the Rural Male Quartette Class in the announcement of a special new Scholarship for this group of competitors.

Each Scholarship received encourages not only the volunteer workers of the Festival, but also the competitors who are eager for honors.

To all who have contributed - and to those who will do so before March 15th - our most sincere and grateful thanks.

EDITH W. GATES, Convener.

Report On Syllabus 1954

Music selections for 1954 Syllabus were again prepared by Professor Harold Hamer, Halifax, who has done this for several previous years.

Speaking recently to the London (Ontario) branch of the Registered Music Teachers' Association of Ontario, Dr. Reginald G. Green, known to members and friends of the Prince Edward Island Musical Association, said in effect: Music is an essential to the full life, an ease to the heart, a comfort to the body.

Further to promote among those who have left school, the development of musical talent and appreciation among individuals and among groups so that in every community there might be that fulness of life and ease of heart that music offers.

Others in these columns make reference to the extended programme offered in the syllabus of 1954 and to the extension of the Festival's influence by the adjudicating of certain classes in Summerside. The executive feels that this is but a beginning and would hope that results will justify still further extending of the operations of the Festival.

We trust that the Festival of 1954 may be the best yet. As I have said on previous occasions: 'This is your Festival. The Association needs your support and you need the support of the Association in every part of the Province. We trust you will show your interest by joining the Association and by attending and by participating in the Festival.'

Yours for the best Festival possible.

G. D. STEEL, President, Prince Edward Island Musical Festival Association.

MARY F. COOK, Secretary P.E.I.M.F.A.

President



DR. G. D. STEEL

Speaking recently to the London (Ontario) branch of the Registered Music Teachers' Association of Ontario, Dr. Reginald G. Green, known to members and friends of the Prince Edward Island Musical Association, said in effect: Music is an essential to the full life, an ease to the heart, a comfort to the body.

Further to promote among those who have left school, the development of musical talent and appreciation among individuals and among groups so that in every community there might be that fulness of life and ease of heart that music offers.

Others in these columns make reference to the extended programme offered in the syllabus of 1954 and to the extension of the Festival's influence by the adjudicating of certain classes in Summerside. The executive feels that this is but a beginning and would hope that results will justify still further extending of the operations of the Festival.

We trust that the Festival of 1954 may be the best yet. As I have said on previous occasions: 'This is your Festival. The Association needs your support and you need the support of the Association in every part of the Province. We trust you will show your interest by joining the Association and by attending and by participating in the Festival.'

Yours for the best Festival possible.

G. D. STEEL, President, Prince Edward Island Musical Festival Association.

MARY F. COOK, Secretary P.E.I.M.F.A.

Field Committee

The work of the Field Committee of the Musical Festival Association is entirely in the rural districts.

The chief aim of this Committee is to extend the teaching of music so that all the schools of the Province may have the benefit of early training in this most important of the cultural arts and thus be qualified to participate in the Festival competitions.

To this end the Field Committee communicates by letter with all the branches of the Women's Institutes, enclosing in each letter the current Syllabus and urging the support of that splendid organization. The Convener of this Committee on all possible occasions, addresses the District Conventions of the Institute explaining the purpose of the Musical Festival and by personal contact.

(Continued on Page 11)

Adjudicator



FRANK WHARRAM

Frank Wharram is a well-known member of the piano faculty of the Royal Conservatory of Music Toronto, where he has taken an active part in faculty organization.

For many years he has been one of the busiest members of the Conservatory Board of Examiners, having examined in many centres throughout the Dominion. In addition to being a successful teacher, he is also a popular lecturer on matters pertaining to music teaching, and examinations, and has also done a considerable amount of Festival adjudication.

Interest by joining the Association and by attending and by participating in the Festival.

Yours for the best Festival possible.

G. D. STEEL, President, Prince Edward Island Musical Festival Association.



"Music, because of its ennobling influences, should be encouraged as a controlling force in the lives of men."

-F. D. Roosevelt.



The Ninth Annual Festival of Music Sponsored By The Prince Edward Island Musical Festival Association

WILL BE HELD IN CHARLOTTETOWN April 31, May 1, 3, 4, 5, 6, 7 and 8

Preliminaries In Specified Classes Will Be Held In Summerside May 3 ENTRIES CLOSE MARCH 1

Get A Syllabus And Mail Your Entry Before The Closing Date

This Is Your Festival - - - Enjoy It By Participating

If You Would Like To Assist In The Work Of The Association, Join It Now

This Advertisement is generously sponsored by:-

Co-op Super Market

The Clarke Fruit Co. Ltd.

Arnfast Coal Co.

Reddin Bros.

LePage Shoe Co. Ltd.

Folk Dancing

April 31 and May 1

In 1951 dancing classes were added to the Syllabus of the Music Festival Association and they have proved very popular.

Folk Dancing goes hand in hand with folk music and it is found in every part of the world.

The response to rhythm is characteristic of children and it represents a physical reaction to music and its home is in the feet.

MRS. GORDON MacMILLAN, Convener.