

Rutham Scheinfeld Frank We And Our Neighbors

SMALL EYES, NOBLE BROWS

We were discussing a man who had never been "much good" in his community. "What can you expect," said one of the company, "with those small ratty eyes of his?" I'd never have trusted him in the wide world!

Not everyone agreed but there was plenty of support for this and similar judgements based on physical appearance.

How many of you, my readers, believe there is a decided relationship between the size and set of the eyes and character or personality?

Or perhaps you think the amount of chin is a reliable index? A receding (small) chin denotes weakness; a good-sized one, strength of character?

Or have you implicit trust in the intellectual qualities of individuals with high foreheads—noble brows? And a poor opinion of the brain power of those with narrow low foreheads?

You may not be absolutely certain of the above, but do you feel that a person with a sharp nose isn't above a sharp business practice? Or one with very thin lips has a "cruel streak" in him?

How many of you are convinced that red hair is almost always linked with a hot temper and with a tendency to fight at the drop of a hat?

Well, modern psychology has found no inborn connection between how a person looks and his personality—but there is a connection, or at least there can be. It is our own attitude toward the appearance of an individual that can have a decided effect upon his personality.

Here, for example, is Willy Jones. He was born with small squinty eyes set close together. He is a homely child in a good-looking family (as can happen) and his parents feel sorry for him (and themselves). They show it in their attitude toward him and in asides they think he can't understand while he is very young (he understands the derogatory tones) and in comments he overhears when he is older. At school he is called "Squinty".

Now in spite of this he may grow up a fine cooperating member of the community, of course. If he has some special talent or ability his nickname may become a term of admiration and affection. Or he may find wise guidance and accept his appearance without bitterness. But sometimes, with no favorable factors, his attitude and his behavior may reflect the unfriendliness shown him.

In lighter vein, consider the story of Sally, the red-head, and her "hot temper." At three (the "negative period") Sally throws a temper tantrum, just as her dark-haired sister did at her age. But instead of following the procedures of Dr. Spock, mother, in Sally's case, stands there, arms akimbo, and says with a half indulgent smile (that doesn't escape the little imp) "So—a temper just like your Uncle Joel!" And through the years, Sally's temper is an established fact and no one treats it with particular seriousness. Result—Sally is quite proud of it and doesn't try too hard to curb it. (It can be so) But you may still argue, "There must be something in it, there have so many people that feel about certain physical characteristics. In his book, 'The New You and Heredity,' Amram Scheinfeld devotes a chapter to 'Looks and Personality.' He points out that the association between red hair and a hot temper may be no more than the resemblance between red and fire 'hence red hair, fiery nature'. In the same way, close set eyes suggest 'closeness' and thus may be associated with stinginess, trickiness, while eyes set wide-apart, suggest openness, frankness. (More later)

In Memoriam

In loving memory of our mother, Mrs. Ben Stevens, Georgetown, who passed away Oct. 6th, 1952.

To-day recalls sad memories Of our dear mother gone to rest

And the ones who think of her to-day

Are the ones who loved her best.

Always loved and remembered by her sons, Willie, Buddy, Harry, Teddy and Dickie.

In loving memory of my mother, Mrs. Benjamin Stevens, who passed away October 6th, 1952.

Gone Dear Mother: gone forever.

How sweet the memory still But death has left a loneliness The world can never fill.

Ever remembered by daughters Florence and son-in-law, Charles; grandchildren Barry, Bunny and Benny.

In loving memory of a dear wife and mother, Mrs. Charles Lutz, who passed away Oct. 6th, 1952.

Away in the beautiful hills of God

In the valley of rest so fair Some day, some time, we know not when

We shall meet our dear love one there.

Lovingly remembered by his band and family.

In loving memory of our mother, Mrs. Ben Stevens, Georgetown, who passed away Oct. 6th, 1952.

We have only your memory dear

To remember our whole life through

But the sweetness will linger forever

As we treasure the image of you.

Always loved and remembered by Mazie, Lawrence, Jimmy, Faye and Bobby.



SURVIVORS MEET

Three survivors of the Santa Elena, sunk in October, 1943 en route to Italy met Wednesday in Charlottetown. On the left above is Col. F. B. Conrad of Charlottetown, next to Mr. John Bassett, Jr., of the Toronto Telegram, who is attending the directors meetings of the Canadian Press and Canadian Daily News-papers Association and Lt. Col. Leo F. MacDonald, Charlotte town.

They were respectively Officer Commanding, Adjutant and Second-in-Command of No. 5 Reinforcement Battalion and were picked up by the next ship in line in the convoy and carried on to Italy. The Santa Elena also carried No. 14 General Hospital Unit and Col. Conrad was senior officer commanding on board. (Barter's Film Lab.)

City and Central

"CRASWELL for better photographs."

"YOUR DOLLAR buys more at the Hughes Drug Store."

GUNS ALL guns reduced at The Bike Shop.

FUNERAL AT MAYFIELD — The funeral of the late Allan Moffat was held from the home of his nephew, Frank Houston on Tuesday afternoon and was largely attended. Rev. C. R. Moase conducted the services. The pallbearers were: Heath Houston, Warfield Orr, Lewis Toombs, Lloyd Houston, Willard Nicholson and Alph Dolron. Interment was in the New Glasgow Cemetery.

Cherry Valley, was held from her late residence Wednesday, Oct. 5 to Christ Church, Cherry Valley at 2 p.m. Services at the church and grave were conducted by Rev. A. E. Piercey, South Milton. The pall bearers were Messrs. Joseph Murphy, Leo Murphy, Russell Ings, Dennis Rooney, Malcolm Irving, Elmer Clow. Burial was in the Church Cemetery. The funeral was largely attended.

Cherry Valley, was held from her late residence Wednesday, Oct. 5 to Christ Church, Cherry Valley at 2 p.m. Services at the church and grave were conducted by Rev. A. E. Piercey, South Milton. The pall bearers were Messrs. Joseph Murphy, Leo Murphy, Russell Ings, Dennis Rooney, Malcolm Irving, Elmer Clow. Burial was in the Church Cemetery. The funeral was largely attended.

Cherry Valley, was held from her late residence Wednesday, Oct. 5 to Christ Church, Cherry Valley at 2 p.m. Services at the church and grave were conducted by Rev. A. E. Piercey, South Milton. The pall bearers were Messrs. Joseph Murphy, Leo Murphy, Russell Ings, Dennis Rooney, Malcolm Irving, Elmer Clow. Burial was in the Church Cemetery. The funeral was largely attended.

Cherry Valley, was held from her late residence Wednesday, Oct. 5 to Christ Church, Cherry Valley at 2 p.m. Services at the church and grave were conducted by Rev. A. E. Piercey, South Milton. The pall bearers were Messrs. Joseph Murphy, Leo Murphy, Russell Ings, Dennis Rooney, Malcolm Irving, Elmer Clow. Burial was in the Church Cemetery. The funeral was largely attended.

Cherry Valley, was held from her late residence Wednesday, Oct. 5 to Christ Church, Cherry Valley at 2 p.m. Services at the church and grave were conducted by Rev. A. E. Piercey, South Milton. The pall bearers were Messrs. Joseph Murphy, Leo Murphy, Russell Ings, Dennis Rooney, Malcolm Irving, Elmer Clow. Burial was in the Church Cemetery. The funeral was largely attended.

Cherry Valley, was held from her late residence Wednesday, Oct. 5 to Christ Church, Cherry Valley at 2 p.m. Services at the church and grave were conducted by Rev. A. E. Piercey, South Milton. The pall bearers were Messrs. Joseph Murphy, Leo Murphy, Russell Ings, Dennis Rooney, Malcolm Irving, Elmer Clow. Burial was in the Church Cemetery. The funeral was largely attended.

Cherry Valley, was held from her late residence Wednesday, Oct. 5 to Christ Church, Cherry Valley at 2 p.m. Services at the church and grave were conducted by Rev. A. E. Piercey, South Milton. The pall bearers were Messrs. Joseph Murphy, Leo Murphy, Russell Ings, Dennis Rooney, Malcolm Irving, Elmer Clow. Burial was in the Church Cemetery. The funeral was largely attended.

Cherry Valley, was held from her late residence Wednesday, Oct. 5 to Christ Church, Cherry Valley at 2 p.m. Services at the church and grave were conducted by Rev. A. E. Piercey, South Milton. The pall bearers were Messrs. Joseph Murphy, Leo Murphy, Russell Ings, Dennis Rooney, Malcolm Irving, Elmer Clow. Burial was in the Church Cemetery. The funeral was largely attended.

Cherry Valley, was held from her late residence Wednesday, Oct. 5 to Christ Church, Cherry Valley at 2 p.m. Services at the church and grave were conducted by Rev. A. E. Piercey, South Milton. The pall bearers were Messrs. Joseph Murphy, Leo Murphy, Russell Ings, Dennis Rooney, Malcolm Irving, Elmer Clow. Burial was in the Church Cemetery. The funeral was largely attended.

Cherry Valley, was held from her late residence Wednesday, Oct. 5 to Christ Church, Cherry Valley at 2 p.m. Services at the church and grave were conducted by Rev. A. E. Piercey, South Milton. The pall bearers were Messrs. Joseph Murphy, Leo Murphy, Russell Ings, Dennis Rooney, Malcolm Irving, Elmer Clow. Burial was in the Church Cemetery. The funeral was largely attended.

Cherry Valley, was held from her late residence Wednesday, Oct. 5 to Christ Church, Cherry Valley at 2 p.m. Services at the church and grave were conducted by Rev. A. E. Piercey, South Milton. The pall bearers were Messrs. Joseph Murphy, Leo Murphy, Russell Ings, Dennis Rooney, Malcolm Irving, Elmer Clow. Burial was in the Church Cemetery. The funeral was largely attended.

Cherry Valley, was held from her late residence Wednesday, Oct. 5 to Christ Church, Cherry Valley at 2 p.m. Services at the church and grave were conducted by Rev. A. E. Piercey, South Milton. The pall bearers were Messrs. Joseph Murphy, Leo Murphy, Russell Ings, Dennis Rooney, Malcolm Irving, Elmer Clow. Burial was in the Church Cemetery. The funeral was largely attended.

Cherry Valley, was held from her late residence Wednesday, Oct. 5 to Christ Church, Cherry Valley at 2 p.m. Services at the church and grave were conducted by Rev. A. E. Piercey, South Milton. The pall bearers were Messrs. Joseph Murphy, Leo Murphy, Russell Ings, Dennis Rooney, Malcolm Irving, Elmer Clow. Burial was in the Church Cemetery. The funeral was largely attended.

Cherry Valley, was held from her late residence Wednesday, Oct. 5 to Christ Church, Cherry Valley at 2 p.m. Services at the church and grave were conducted by Rev. A. E. Piercey, South Milton. The pall bearers were Messrs. Joseph Murphy, Leo Murphy, Russell Ings, Dennis Rooney, Malcolm Irving, Elmer Clow. Burial was in the Church Cemetery. The funeral was largely attended.

Cherry Valley, was held from her late residence Wednesday, Oct. 5 to Christ Church, Cherry Valley at 2 p.m. Services at the church and grave were conducted by Rev. A. E. Piercey, South Milton. The pall bearers were Messrs. Joseph Murphy, Leo Murphy, Russell Ings, Dennis Rooney, Malcolm Irving, Elmer Clow. Burial was in the Church Cemetery. The funeral was largely attended.

Cherry Valley, was held from her late residence Wednesday, Oct. 5 to Christ Church, Cherry Valley at 2 p.m. Services at the church and grave were conducted by Rev. A. E. Piercey, South Milton. The pall bearers were Messrs. Joseph Murphy, Leo Murphy, Russell Ings, Dennis Rooney, Malcolm Irving, Elmer Clow. Burial was in the Church Cemetery. The funeral was largely attended.

Cherry Valley, was held from her late residence Wednesday, Oct. 5 to Christ Church, Cherry Valley at 2 p.m. Services at the church and grave were conducted by Rev. A. E. Piercey, South Milton. The pall bearers were Messrs. Joseph Murphy, Leo Murphy, Russell Ings, Dennis Rooney, Malcolm Irving, Elmer Clow. Burial was in the Church Cemetery. The funeral was largely attended.

Cherry Valley, was held from her late residence Wednesday, Oct. 5 to Christ Church, Cherry Valley at 2 p.m. Services at the church and grave were conducted by Rev. A. E. Piercey, South Milton. The pall bearers were Messrs. Joseph Murphy, Leo Murphy, Russell Ings, Dennis Rooney, Malcolm Irving, Elmer Clow. Burial was in the Church Cemetery. The funeral was largely attended.

Cherry Valley, was held from her late residence Wednesday, Oct. 5 to Christ Church, Cherry Valley at 2 p.m. Services at the church and grave were conducted by Rev. A. E. Piercey, South Milton. The pall bearers were Messrs. Joseph Murphy, Leo Murphy, Russell Ings, Dennis Rooney, Malcolm Irving, Elmer Clow. Burial was in the Church Cemetery. The funeral was largely attended.

Cherry Valley, was held from her late residence Wednesday, Oct. 5 to Christ Church, Cherry Valley at 2 p.m. Services at the church and grave were conducted by Rev. A. E. Piercey, South Milton. The pall bearers were Messrs. Joseph Murphy, Leo Murphy, Russell Ings, Dennis Rooney, Malcolm Irving, Elmer Clow. Burial was in the Church Cemetery. The funeral was largely attended.

Cherry Valley, was held from her late residence Wednesday, Oct. 5 to Christ Church, Cherry Valley at 2 p.m. Services at the church and grave were conducted by Rev. A. E. Piercey, South Milton. The pall bearers were Messrs. Joseph Murphy, Leo Murphy, Russell Ings, Dennis Rooney, Malcolm Irving, Elmer Clow. Burial was in the Church Cemetery. The funeral was largely attended.

Cherry Valley, was held from her late residence Wednesday, Oct. 5 to Christ Church, Cherry Valley at 2 p.m. Services at the church and grave were conducted by Rev. A. E. Piercey, South Milton. The pall bearers were Messrs. Joseph Murphy, Leo Murphy, Russell Ings, Dennis Rooney, Malcolm Irving, Elmer Clow. Burial was in the Church Cemetery. The funeral was largely attended.

Cherry Valley, was held from her late residence Wednesday, Oct. 5 to Christ Church, Cherry Valley at 2 p.m. Services at the church and grave were conducted by Rev. A. E. Piercey, South Milton. The pall bearers were Messrs. Joseph Murphy, Leo Murphy, Russell Ings, Dennis Rooney, Malcolm Irving, Elmer Clow. Burial was in the Church Cemetery. The funeral was largely attended.

Cherry Valley, was held from her late residence Wednesday, Oct. 5 to Christ Church, Cherry Valley at 2 p.m. Services at the church and grave were conducted by Rev. A. E. Piercey, South Milton. The pall bearers were Messrs. Joseph Murphy, Leo Murphy, Russell Ings, Dennis Rooney, Malcolm Irving, Elmer Clow. Burial was in the Church Cemetery. The funeral was largely attended.

Cherry Valley, was held from her late residence Wednesday, Oct. 5 to Christ Church, Cherry Valley at 2 p.m. Services at the church and grave were conducted by Rev. A. E. Piercey, South Milton. The pall bearers were Messrs. Joseph Murphy, Leo Murphy, Russell Ings, Dennis Rooney, Malcolm Irving, Elmer Clow. Burial was in the Church Cemetery. The funeral was largely attended.

Cherry Valley, was held from her late residence Wednesday, Oct. 5 to Christ Church, Cherry Valley at 2 p.m. Services at the church and grave were conducted by Rev. A. E. Piercey, South Milton. The pall bearers were Messrs. Joseph Murphy, Leo Murphy, Russell Ings, Dennis Rooney, Malcolm Irving, Elmer Clow. Burial was in the Church Cemetery. The funeral was largely attended.

Cherry Valley, was held from her late residence Wednesday, Oct. 5 to Christ Church, Cherry Valley at 2 p.m. Services at the church and grave were conducted by Rev. A. E. Piercey, South Milton. The pall bearers were Messrs. Joseph Murphy, Leo Murphy, Russell Ings, Dennis Rooney, Malcolm Irving, Elmer Clow. Burial was in the Church Cemetery. The funeral was largely attended.

Cherry Valley, was held from her late residence Wednesday, Oct. 5 to Christ Church, Cherry Valley at 2 p.m. Services at the church and grave were conducted by Rev. A. E. Piercey, South Milton. The pall bearers were Messrs. Joseph Murphy, Leo Murphy, Russell Ings, Dennis Rooney, Malcolm Irving, Elmer Clow. Burial was in the Church Cemetery. The funeral was largely attended.

Cherry Valley, was held from her late residence Wednesday, Oct. 5 to Christ Church, Cherry Valley at 2 p.m. Services at the church and grave were conducted by Rev. A. E. Piercey, South Milton. The pall bearers were Messrs. Joseph Murphy, Leo Murphy, Russell Ings, Dennis Rooney, Malcolm Irving, Elmer Clow. Burial was in the Church Cemetery. The funeral was largely attended.

Cherry Valley, was held from her late residence Wednesday, Oct. 5 to Christ Church, Cherry Valley at 2 p.m. Services at the church and grave were conducted by Rev. A. E. Piercey, South Milton. The pall bearers were Messrs. Joseph Murphy, Leo Murphy, Russell Ings, Dennis Rooney, Malcolm Irving, Elmer Clow. Burial was in the Church Cemetery. The funeral was largely attended.

Cherry Valley, was held from her late residence Wednesday, Oct. 5 to Christ Church, Cherry Valley at 2 p.m. Services at the church and grave were conducted by Rev. A. E. Piercey, South Milton. The pall bearers were Messrs. Joseph Murphy, Leo Murphy, Russell Ings, Dennis Rooney, Malcolm Irving, Elmer Clow. Burial was in the Church Cemetery. The funeral was largely attended.

Cherry Valley, was held from her late residence Wednesday, Oct. 5 to Christ Church, Cherry Valley at 2 p.m. Services at the church and grave were conducted by Rev. A. E. Piercey, South Milton. The pall bearers were Messrs. Joseph Murphy, Leo Murphy, Russell Ings, Dennis Rooney, Malcolm Irving, Elmer Clow. Burial was in the Church Cemetery. The funeral was largely attended.

Cherry Valley, was held from her late residence Wednesday, Oct. 5 to Christ Church, Cherry Valley at 2 p.m. Services at the church and grave were conducted by Rev. A. E. Piercey, South Milton. The pall bearers were Messrs. Joseph Murphy, Leo Murphy, Russell Ings, Dennis Rooney, Malcolm Irving, Elmer Clow. Burial was in the Church Cemetery. The funeral was largely attended.

Cherry Valley, was held from her late residence Wednesday, Oct. 5 to Christ Church, Cherry Valley at 2 p.m. Services at the church and grave were conducted by Rev. A. E. Piercey, South Milton. The pall bearers were Messrs. Joseph Murphy, Leo Murphy, Russell Ings, Dennis Rooney, Malcolm Irving, Elmer Clow. Burial was in the Church Cemetery. The funeral was largely attended.

Cherry Valley, was held from her late residence Wednesday, Oct. 5 to Christ Church, Cherry Valley at 2 p.m. Services at the church and grave were conducted by Rev. A. E. Piercey, South Milton. The pall bearers were Messrs. Joseph Murphy, Leo Murphy, Russell Ings, Dennis Rooney, Malcolm Irving, Elmer Clow. Burial was in the Church Cemetery. The funeral was largely attended.

Cherry Valley, was held from her late residence Wednesday, Oct. 5 to Christ Church, Cherry Valley at 2 p.m. Services at the church and grave were conducted by Rev. A. E. Piercey, South Milton. The pall bearers were Messrs. Joseph Murphy, Leo Murphy, Russell Ings, Dennis Rooney, Malcolm Irving, Elmer Clow. Burial was in the Church Cemetery. The funeral was largely attended.

Cherry Valley, was held from her late residence Wednesday, Oct. 5 to Christ Church, Cherry Valley at 2 p.m. Services at the church and grave were conducted by Rev. A. E. Piercey, South Milton. The pall bearers were Messrs. Joseph Murphy, Leo Murphy, Russell Ings, Dennis Rooney, Malcolm Irving, Elmer Clow. Burial was in the Church Cemetery. The funeral was largely attended.

Cherry Valley, was held from her late residence Wednesday, Oct. 5 to Christ Church, Cherry Valley at 2 p.m. Services at the church and grave were conducted by Rev. A. E. Piercey, South Milton. The pall bearers were Messrs. Joseph Murphy, Leo Murphy, Russell Ings, Dennis Rooney, Malcolm Irving, Elmer Clow. Burial was in the Church Cemetery. The funeral was largely attended.

Cherry Valley, was held from her late residence Wednesday, Oct. 5 to Christ Church, Cherry Valley at 2 p.m. Services at the church and grave were conducted by Rev. A. E. Piercey, South Milton. The pall bearers were Messrs. Joseph Murphy, Leo Murphy, Russell Ings, Dennis Rooney, Malcolm Irving, Elmer Clow. Burial was in the Church Cemetery. The funeral was largely attended.

Cherry Valley, was held from her late residence Wednesday, Oct. 5 to Christ Church, Cherry Valley at 2 p.m. Services at the church and grave were conducted by Rev. A. E. Piercey, South Milton. The pall bearers were Messrs. Joseph Murphy, Leo Murphy, Russell Ings, Dennis Rooney, Malcolm Irving, Elmer Clow. Burial was in the Church Cemetery. The funeral was largely attended.

Cherry Valley, was held from her late residence Wednesday, Oct. 5 to Christ Church, Cherry Valley at 2 p.m. Services at the church and grave were conducted by Rev. A. E. Piercey, South Milton. The pall bearers were Messrs. Joseph Murphy, Leo Murphy, Russell Ings, Dennis Rooney, Malcolm Irving, Elmer Clow. Burial was in the Church Cemetery. The funeral was largely attended.

Cherry Valley, was held from her late residence Wednesday, Oct. 5 to Christ Church, Cherry Valley at 2 p.m. Services at the church and grave were conducted by Rev. A. E. Piercey, South Milton. The pall bearers were Messrs. Joseph Murphy, Leo Murphy, Russell Ings, Dennis Rooney, Malcolm Irving, Elmer Clow. Burial was in the Church Cemetery. The funeral was largely attended.

Cherry Valley, was held from her late residence Wednesday, Oct. 5 to Christ Church, Cherry Valley at 2 p.m. Services at the church and grave were conducted by Rev. A. E. Piercey, South Milton. The pall bearers were Messrs. Joseph Murphy, Leo Murphy, Russell Ings, Dennis Rooney, Malcolm Irving, Elmer Clow. Burial was in the Church Cemetery. The funeral was largely attended.

Cherry Valley, was held from her late residence Wednesday, Oct. 5 to Christ Church, Cherry Valley at 2 p.m. Services at the church and grave were conducted by Rev. A. E. Piercey, South Milton. The pall bearers were Messrs. Joseph Murphy, Leo Murphy, Russell Ings, Dennis Rooney, Malcolm Irving, Elmer Clow. Burial was in the Church Cemetery. The funeral was largely attended.

Freight Cars To Have New Aluminum Roofs

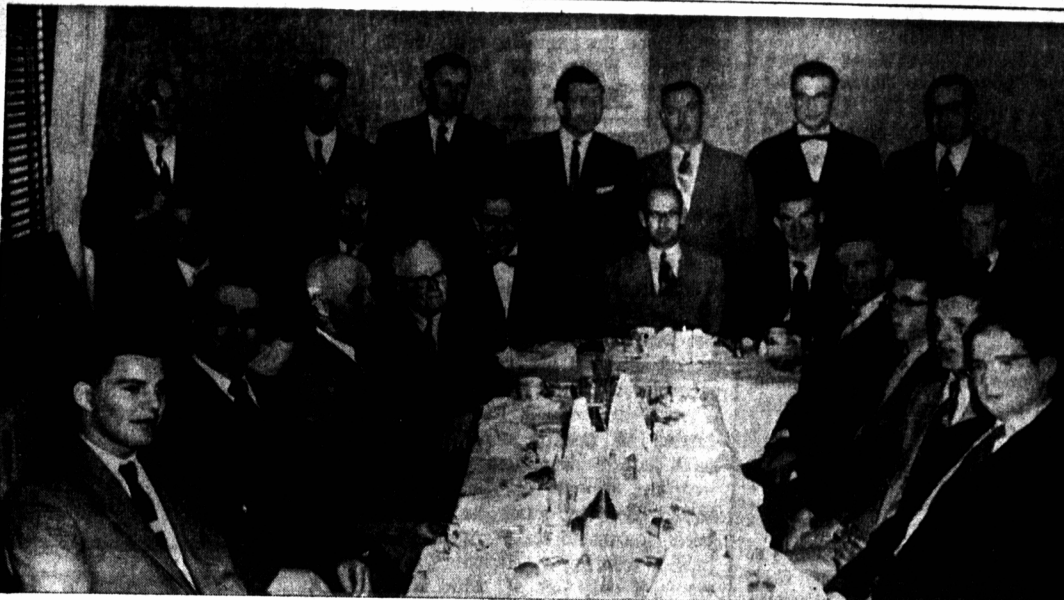
MONTREAL, Oct. 4.—Aluminum roofs for railway freight cars will become a reality in Canada with the delivery of 1,750 units now on order by the Canadian National Railways. Manufactured only on an experimental basis to date, the cars represent the first quantity order of its kind in Canada. It follows extensive tests during the past 10 years which revealed financial advantages of aluminum-topped cars over steel units.

The aluminum for the roofs will come from the aluminum company of Canada Limited. Principal subsidiary of Aluminum Limited, Montreal.

Orders for the cars and roofs were let to several contractors. The standard railway equipment manufacturing company (Canada) Ltd of Montreal will make 1,250 aluminum roofs, 1,000 of which will be sent to the Eastern Car Company of Trenton, N. S. The remaining 250 will be sent to the Canadian Car and Foundry Company of Montreal. Together with 250 roofs made by the National Steel Car Corporation of Hamilton, the National Steel Car Corporation will manufacture 250 additional roofs and

These experiments began in 1945 when three cars from each railway were equipped with aluminum roofs, sides and doors. The cars were placed in service and a close check on their serviceability was kept by engineers of both railways. The Department of Research and development of the CNR also conducted laboratory tests and economic studies which finally established the aluminum roof as an alternative in freight car specifications. Early last July the CNR asked

for quotations on the order. The use of aluminum roofs in quantity is the result of 10 years of experiment conducted jointly by the Canadian Pacific and Canadian National Railways in co-operation with the development division of the Aluminum company of Canada.



MASTER FEEDS DEALER MEETING

Island Master Feeds dealers and representatives are shown with guest speaker, Dr. George Fisher, provincial veterinarian, who spoke on "The Place of the Feed Dealer in Agriculture" at the annual fall Master Feeds dealer dinner meeting on Tuesday, Oct. 4. The program was also highlighted by an illustrated address on the Master Feeds Toronto Plant by H. A. Blenkhorn, Toronto. (Photo by Barter's Film Lab.)

Cherry Valley, was held from her late residence Wednesday, Oct. 5 to Christ Church, Cherry Valley at 2 p.m. Services at the church and grave were conducted by Rev. A. E. Piercey, South Milton. The pall bearers were Messrs. Joseph Murphy, Leo Murphy, Russell Ings, Dennis Rooney, Malcolm Irving, Elmer Clow. Burial was in the Church Cemetery. The funeral was largely attended.

FOR YOUR THANKSGIVING DINNER
Call J. M.'s MEATS — 5535 MARKET BUILDING

GRADE "A" FRESH KILLED TURKEYS

GRADE "A" CAPON CHICKENS

— ALSO —
Beef, Lamb and Pork

Harvest of Values at PIERCE'S

YES SIR!
For Thanksgiving this year we have a store full of a "Harvest of Values" for you. Delicious tasty Turkeys, Capons, etc., that every member of the family will enjoy. And all the trimmings to make this the best Thanksgiving Dinner ever.

TURKEYS — 10 TO 14 LBS. **lb. 65c**

CAPON — 6 TO 7 LBS. **lb. 55c**

FOWL — YEAR OLD GRADE "A" **lb. 37c**

New Fall and Winter Coats



Trend Setting Styles
Season's Top Woollens
Glorious New Colors
Complete Style Range
\$19.95 to \$95.00

From Famous Makers —
Kilgornachs by Gordon — Miss Style — Sanders and Gold — Barry Lee Postluns — Popular — Snider. Loose and Fitted Styles in Tweeds, Hlysian, Alpaca, Mohair, Berg, 'Almolaine.

PRICED TO SUIT YOUR PURSE

19.95 to 95.00

MOORE & McLEOD Limited

NOW IN THE GIANT FAMILY SIZE



CHOICE GROCERIES

SELECT SOLID TUNA FISH, tin	29c
"EXTRA SPECIAL" JIFFY PIE CRUST, pkg.	29c
ROYAL RUSSET — 46 OZ. APPLE JUICE, tin	29c
CAMPBELL'S Tomato Soup, 2 tins	25c
BOBEN HOOD Rolled Oats, 5 lb. bag	53c
NESTLES QUICK, 16 oz. tin	67c
FRESH COUNTRY STYLE SAUSAGE, lb.	37c
BREAKFAST SLICED BACON, lb.	55c
FRESH ROASTING PORK, lb.	37c

FRUITS & VEGETABLES

RED RIPE ISLAND TOMATOES, 2 lbs.	25c
SWEET MELLOW CANTELOUPE, each	29c
FRESH CRISP SALAD BOWL, pkg.	25c
SWEET POTATOES, 2 lbs.	29c
CURLY FRESH SPINACH, pkg.	35c
SUNKIST (SWEET & JUICY) ORANGES, 2 doz.	75c

20¢ OFF REGULAR PRICE

NOW! DOUBLE SIZE IN THE 24 OZ. CAN

MAPLE LEAF LIQUID DETERGENT

63c

GREAT GEORGE STREET, CHARLOTTETOWN, P.E.I. **Pierce's CASH and CARRY** DELIVERY SERVICE