

**RURAL
CHURCHES
KINGS**

MONTAGUE Baptist Pastor-
Rev. A.G.J. Steeves, MA.
Ed., BD., minister, Montague:
Sunday School 10 a.m. Worship
11 a.m. Evensong 7.30 p.m. Mur-
ray River: Sunday School 2.00
p.m. Worship 3.15 p.m. Murray
Harbor: Sunday School 1 p.m.
Worship 2 p.m. Sturgeon: Sun-
day School 2 p.m. Worship 7.30
p.m.

MURRAY RIVER Pentecostal
Church Sunday, June 12. Sunday
School 10 a.m. Worship 11 a.m.
and 7.30 p.m. Rev. Fred Day,
minister.

MONTAGUE Bible Chapel.
The Lord's Supper 9.30 a.m. Sun-
day School and Adult Bible
Class 10.45 a.m. Worship 7.30
p.m.

UPTON Gospel Chapel. Sun-
day School 10 a.m. Worship 11
a.m. Gospel Service 8 p.m.

GEORGETOWN Holy Trinity
Anglican Church. Sunday, June
12. Sunday School 10 a.m. Holy
Communion 11 a.m. Rev. J. Ste-
phen Sherren, Priest-in-charge.

CENTRAL KINGS Charge, the
United Church. St. David's:
Worship 9.30 a.m. Church School
10 a.m. Dundas: Worship 11.00
a.m. Church School 10 a.m. An-
nandale: Worship 7.30 p.m. Rev.
M.R. Pocklington, minister.

DUNDAS - Annandale United
Baptist Pastorate. Dundas: Sun-
day School 11 a.m. Worship 8.00
p.m. Annandale: Sunday School
10 a.m. Worship 11 a.m. Lic.
Myrtle Ingersoll, pastor.

THE PRESBYTERIAN
Church. Sunday, June 12. Cale-
donia: Church School 10 a.m.
Worship 11 a.m. Peter's Road:
Church School 1.30 p.m. Wor-
ship 2.30 p.m. Murray Harbor
North: Church School 7 p.m.
Worship 8 p.m. Rev. M. Carl
Currie, minister.

MURRAY HARBOR - Mur-
ray River Pastorate, the United
Church. Sunday, June 12. Little
Sands: Worship 9.30 a.m. Mur-
ray River: Worship 11 a.m.
Church School 9.30 a.m. Murray
Harbor: Worship 7.30 p.m.
Church School 9.30 a.m. Rev.
David Barwise, minister.

MONTAGUE Pastoral Charge,
the Presbyterian Church. St.
Andrew's, Cardigan: Worship
9.30 a.m. Church School 10.30
a.m. Please note new time. St.
Andrew's, Montague: Church
School 10 a.m. Worship 11 a.m.
and 7.30 p.m. Rev. Basil Low-
ery, BA., BD., minister.

GEORGETOWN BAPTIST
Church Sunday, June 12. Sun-
day School 10 a.m. Worship 11
a.m. and 7.30 p.m. Rev. E. Les-
lie Whitaker, speaker, who will
show slides of his recent world
tour of Baptist Mission stations.
Everyone welcome. Rev. Earle
Smith, pastor.

MONTAGUE Pastoral Charge,
the United Church. Sunday,
June 12. Montague 11 a.m. Stur-
geon 2.30 p.m. Lower Montague
7.30 p.m. Holy Communion at all
services. Rev. Russell F. Burns,
minister.

EAST POINT Protestant Par-
ish. Church School 9.45 a.m.
Worship and Communion in the
Baptist Church, Kingsboro 11.00
a.m. Evening Worship 7.30 p.m.
Malcolm O. Smith, pastor.

FREE CHURCH of Scotland.
Worship: Birch Hill 11 a.m. Sun-
day School 10 a.m. Bangor 2.00
p.m. Belle River 4.30 p.m. Mur-
ray River 7.30 p.m. Sunday
School 11 a.m. Rev. Ewen E.
MacDougall, minister.

MONTAGUE Church of Christ.
Sunday, June 12. Bible School 10
a.m. Worship 11 a.m. Message:
"The promise of the Holy Spir-
it." Evening Service 7.30 p.m.
Message: "Will Christ return?"
Leslie Jones, minister.

MURRAY HARBOUR Church
of Christ, 10.00 Bible School and
Lord's Supper, 7.30 Evangelistic
Service. Special speaker, James
Matheson.

QUEENS

FREE CHURCH of Scotland,
Sunday, June 12. Worship at
Stanchel 2 p.m. Sunday School
1 p.m. Rev. W.R. Underhay,
minister.

NORTH RIVER Baptist Pas-
torate. Rev. T.W. Howard, min-
ister. Sunday, June 12. Wor-
ship: North River 11 a.m.
Clyde River 9.45 a.m. Kingston
1.45 p.m. Sunday Schools: North
River 10 a.m. Clyde River 10.45
a.m. Kingston 10.15 a.m. Fair-
view 11 a.m. Long Creek 11 a.m.

BRADALBANE PASTORAL
Charge, the United Church. Sun-
day, June 12. Rose Valley 10.00
a.m. Bradalbane 11.30 a.m.
North Granville 8 p.m. Holy
Communion will be celebrated
at both morning services. Rev.
William E. Hare, BA., BD., min-
ister.

APOSTOLIC PENTECOSTAL
Church, Hartz Hall, East Royal-
ty. Sunday School 10 a.m. Wor-
ship 11 a.m. Evangelistic Service
7.30 p.m. Week-night services,
Tuesday and Thursday at 8.00
p.m. All welcome. James Mc-
Killop and Edwin Featherstone,
pastors.

(Continued on Page 10)

PURITY DAIRY
"Parents Prefer
Purity Products"
217 Kent St. Dial 4.7125

Now - Save on the finest Beef you can buy - at the...



Beef Round-up

Special Prices
Effective 'Til
Closing Time
Saturday, June 11th

GOLDEN RIPE

BANANAS Lb. **19^c**

FIRM CRISP

LETTUCE Ea. **25^c**

NO. 1 CORELESS

CARROTS 2 Lbs. **33^c**

SWEET, JUICY, MEXICAN

ORANGES 5 Lbs. **69^c**

CANADIAN

ONIONS 2 LBS. **25^c**



FRASER'S BONELESS

CHICKEN 3 7 OZ. TINS **1.00**

MAXWELL HOUSE INSTANT

COFFEE 6 OZ. JAR **1.13**

CARNATION MASHED

POTATOES 2 6 OZ. PKGS. **63^c**

HEINZ TOMATO

KETCHUP 20 OZ. BOT. **39^c**

SILVER LASSES

MOLASSES Quart Container **39^c**

CLARK'S IN TOMATO SAUCE

BEANS 2 20 OZ. TINS **49^c**

PETER PAN

PEACHES 3 15 OZ. TINS **69^c**

RASP., STRAW., CHERRY & LEMON

JELLO 2 6 OZ. PKGS. **43^c**

BLADE or SHOULDER BEEF

ROAST LB. **49^c**

ROUND or WING

STEAK LB. **83^c**

SIRLOIN OR T-BONE

STEAK Lb. **89^c**

MAPLE LEAF

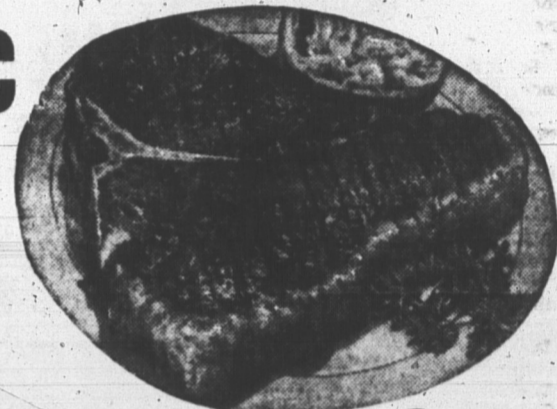
WIENERS Lb. **49^c**

FRESH BEEF

BRISKET Lb. **35^c**

MAPLE LEAF—6 OZ

Cooked Ham Pkg. **55^c**



ICING

SUGAR 1 LB. PKG. **10^c**

ALLEN'S APPLE

JUICE 3 48 OZ. TINS **1.00**

MONARCH 1 LB. PKG.

Margarine **29^c**



TEA BAGS

Gauze 60 COUNT **83^c**

LIQUID SUNSHINE

JAVEX 64 OZ. BOT. **49^c**

MONARCH QUICK

WHIP 2 OZ. PKG. **18^c**



EAST PACK MACKEREL

FILLETS 1 LB. PKG. **33^c**

PERFECTION

SHERBET Pint Container **33^c**

COTT

BEVERAGES

10 10 OZ. TINS **83^c**

McCORMICK'S

SCOTCH MINTS 1 LB. PKG. **39^c**

JET SPRAY

BON AMI TIN **69^c**

MARVEN'S PEERLESS

COOKIES PKG. **85^c**

PURITAN IRISH

STEW 2 15 OZ. TINS **69^c**

LEVER BROS.

OMO GIANT SIZE **79^c**

DOROTHY REED COCONUT OIL

SHAMPOO 12 OZ. BOT. **45^c**

PURITAN BEEF

STEW 2 15 OZ. TINS **69^c**

GARDEN PATCH WHOLE KERNEL

CORN 2 14 OZ. TINS **35^c**

PEPSODENT FLUORIDE

Tooth Paste 3 LARGE TUBES **1.00**