



IT DIDN'T HELP.

skipper Don Churnside replaced his regular spinnaker with a parachute for an unlimited-sale whaler race off Halifax harbor, but it didn't

work — his boat placed third. Churnside said the parachute might have carried his vessel to victory if winds had been heavier, but said the extra sale power also increased the danger of capsizing. (CP Wirephoto)

NATO Secrets May Be Kept From France

LONDON (AP)—United States and British authorities have pondered moves to bar France from sharing strategic and planning secrets of the North Atlantic Treaty Organization.

In reporting this, diplomats said the two countries also are considering urgent action for the transfer of NATO's political headquarters from Paris to Brussels. They favor holding the year-end session of NATO foreign ministers in Brussels rather than in Paris.

A decision was to have been taken by the foreign ministers of France's 14 partner states at a special meeting in Brussels next month. This now seems unlikely and more probably will come immediately before the regular December meeting.

The American-British studies are taking place in a mood of growing impatience with the attitude President de Gaulle is taking in the wake of France's withdrawal from all NATO military activities.

Issues involve the defence of Europe and West Germany's dual attachments to France on one side and to the Americans, British and other Allies on the other.

Washington and London are moving to the view that a rougher attitude is needed to deal with the French, even if it means expelling France from NATO's top secret strategic and planning groups.

TIGNISH

Fedele Bernard returned to his home in Tignish from Prince County Hospital, Summerside, where he recently underwent surgery.

Mrs. Reg. Eldershaw chairman of water safety program

at Tignish and Mrs. Peter Gaudet attended the annual meeting of the Red Cross Safety committee held recently at the Tartan Restaurant Summerside. Encouraging reports on the past summer classes and day camps were heard from all centres in Prince County.

Mrs. Frank Gaudet is improving in health at her home in Tignish after recently undergoing surgery at Prince County Hospital Summerside.

Reta Smythe daughter of Mr. and Mrs. John Smythe, Tignish, underwent surgery at Prince County Hospital, Summerside on Wednesday.

Mr. and Mrs. Raymond McRae and family of Toronto, Ont. are visiting relatives and friends in the Tignish Area.

Mrs. Catherine Roche accompanied by her granddaughters, Pat and Arlene O'Shea returned to their home in Boston, Mass.

after a vacation spent at the home of William O'Brien, Tignish.

Mr. and Mrs. Paul Dawson, Boston, Mass., spent the Labour Day holiday with relatives and friends in Tignish.

Phyllis Dennis, O'Leary, is spending the holiday weekend with Midge and Rena Eldershaw, Tignish.

Dr. Leo Poirier accompanied by his wife and family, returned to their home in Massachusetts after a holiday spent with relatives and friends in Tignish. Accompanying them on their return were Dr. Poirier's parents, Mr. and Mrs. Medric Poirier of Leoville.

WATER RUNS AWAY

A distillery uses and discards 600,000 gallons of water for every 1,000 bushels of grain it uses.

Progressive Conservative ANNUAL MEETING

2nd District Queens County

Tuesday, Sept. 20th

8.30 p.m.

AFTON HALL

Guest Speakers: Walter R. Shaw and Heath Macquarrie, M.P.

Each Poll Committee is requested to have five voting delegates in attendance.

All Progressive Conservative supporters are invited to attend.

Increase In Jobs Lagging Behind Larger Labor Force

By BEN WARD
OTTAWA (CP)—For the first time in more than three years unemployment in Canada has risen in a year-to-year comparison. Strangely enough, the statisticians say it's partly a result of the continuing boom in employment.

The jobless total for August, was 228,000 or 2.9 per cent in a record labor force of 7,905,000. It was down from 244,000 in July but above the 211,000 in August of last year.

Not since May of 1963 has a monthly unemployment figure been higher than the year-earlier level.

The report, prepared jointly by the Dominion Bureau of Statistics and the immigration department's manpower section, said the strong surge of non-farm employment that has been so noticeable this summer continued unabated.

Between July and August, a period when non-farm jobs usually show a slight decline, non-

farm employment jumped by 40,000 to 6,928,000. In the year-to-year comparison, the jump was 383,000 or a whopping 5.9 per cent.

FARM JOBS DROP
The gains were partly offset by a continued decline in farm jobs—down 6,000 in the month and 85,000 on the year to 649,000.

Meanwhile, the labor force grew by 18,000 in the month and 315,000 on the year.

What does it all mean? Employment demand is "very strong," a DBS official stressed. It was attracting people into the labor market who would not normally consider themselves eligible. Many were inevitably ending up among the jobless.

This was particularly noticeable among women. Their number in the labor force jumped by 165,000 during the year to 2,262,000. But the number of unemployed women also grew, by 17,000 to 66,000. Coincidentally, 17,000 was also the increase in

total year - to - year unemployment.

In the same period, unemployment among married men dropped by 6,000 to 72,000.

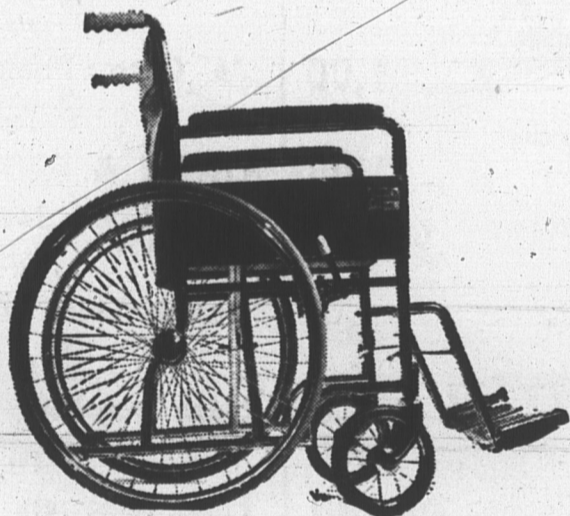
The official said another indication of this trend was the fact that the year-to-year jump in unemployment showed up mainly in the big job-producing industrial areas of Ontario and British Columbia.

SHOW INCREASES

Unemployment in Ontario increased by 18,000 to 75,000. In B.C. it went up by 3,000 to 27,000. But in the areas of chronic unemployment, Quebec and the Atlantic provinces, jobless ranks continued to shrink, largely because the labor demand there was not strong enough to draw fringe groups into the labor force.

Unemployment rates by regions, with year-earlier figures bracketed: Atlantic 3.9 (4.2), Quebec 3.8 (4.1), Ontario 2.6 (2.1), Prairies 1.3 (1.4), British Columbia 3.6 (3.4).

The national rate in August of 2.9 per cent compares to 3.1 per cent in July and 2.8 per cent in August of last year.



If your firm has Blue Shield-Blue Cross "E.H.B." you won't be worried about the heavy cost of prolonged illness or accident.

... costs like private duty nursing, prescription drugs and hospital private room. These and other essential services are not covered by basic hospital and medical plans.

To fill this gap, Blue Shield-Blue Cross now provides an additional protection plan called Extended Health Benefits (E.H.B.). It is specially designed to dovetail with your basic health coverage and provide the extra protection you need—in or out of hospital.

"E.H.B." is a Blue Shield-Blue Cross "company group" plan, available to firms with 10 or more employees. Monthly membership rates are surprisingly low.

For full information on this and other Blue Shield-Blue Cross protection plans for groups or individuals, contact:

Maritime

Blue Shield-Blue Cross

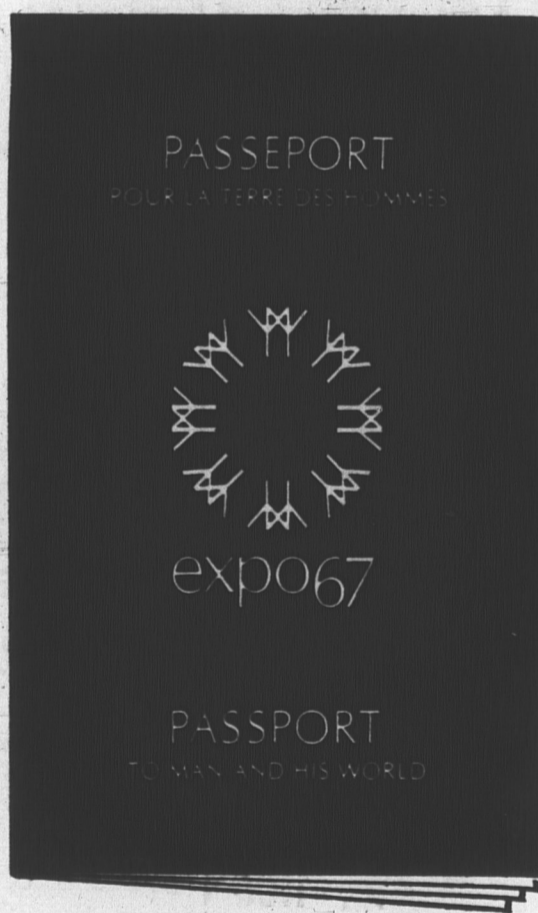
P.O. Box 220, Moncton, N.B.

Branches: Halifax, Saint John, Fredericton, Charlottetown, St. John's, Nfld.



Blue Shield-Blue Cross is a non-profit organization. It is sponsored by physicians and hospitals and serves more people in the Atlantic provinces than any other plan.

expo67 Passports to pleasure!



A great idea for you, your family, for gifts ...now available at special discount prices:

Through any branch of any chartered bank, you can buy — at bargain prices — Passports to see the extraordinary spectacle of "Man and His World". And you can start planning to visit Expo 67 during the 6 momentous months in 1967 when this great World Exhibition is in progress. See "the life of your time" — and have "the time of your life"!

Buy now for gift-giving, too — it's an original and thoughtful way to say "Enjoy Expo!" to anyone you'd like to please on any gift-occasion... birthday, anniversary, graduation, Christmas. Also ideal for prizes and awards.

All Passport prices include: admission to grounds, entrance to all of scores of pavilions, and unrestricted travel on "Expo-Express" throughout the vast Exhibition area in Montreal.

PASSPORT PRICES	Present Prices (expiring Feb. 28, 1967)	Regular Prices at gate during Expo 67
Daily Passport	\$2.00	\$2.50
Weekly Passport (7 consecutive days)	\$7.50	\$12.00
Season Passport	\$22.50	\$35.00

Passports for children aged 2 to 12 available at half price; also special rates for youths.

Buy your Passport now and save... and start building a Family Expo 67 Tour Account at your local chartered bank branch.

Be sure your family sees Expo 67 April 28 to Oct. 27, 1967 — at Montreal, Que.

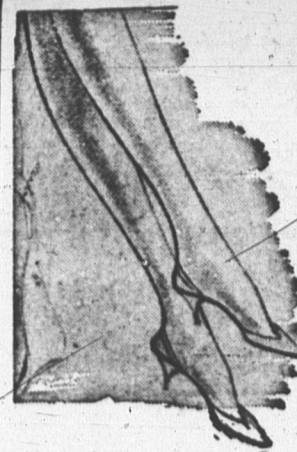
THE CHARTERED BANKS SERVING YOU AND YOUR COMMUNITY

ELLIS BROS
SHOPPING CENTRE
161 ST. PETERS ROAD SHERWOOD P.E.I.

VARIETY TIE-IN SALE

Tremendous Specials in Variety, Ladies', Children's & Men's Wear Depts. to tie-in with our PRO-Hard-ware Opening.

Super Special
ASPIRIN TABLETS
Bottle of 100
56c



LADIES' NYLONS

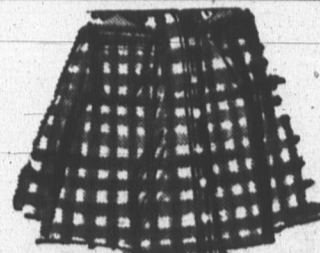
First quality seamless mesh 400.

4 PAIR 1.00
8 PAIR 1.00

TONI HOME PERMANENT

Super - regular - gentle reg.

SPECIAL **1.39**



ONE LOT LADIES'

Wool Flannel & Tweeds. Sizes 10-20

SKIRTS

Regular \$11.95

SPECIAL **7.50**

ONE LOT

Regular 3.95

SPECIAL **1.99**

size 16" x 16"

DISH CLOTHS 6 for 88c

10c exercise

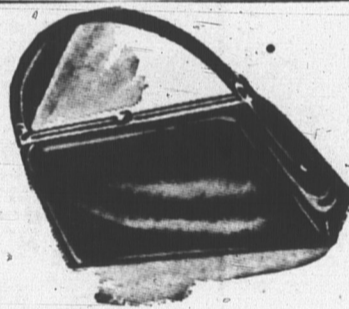
BOOKS 10 for 88c

Good quality, reg. 49c

WRITING PADS . . . 34c

Good quality 42"

PILLOW CASES pr. 1.25



New fall styles. Smart looking Plastics

REGULAR 3.95

HANDBAGS
3.29

Sizes 620 and 127

KODAK FILM

BLACK and WHITE

35c



BOYS' windbreaker style, fall

JACKETS
4.88

MEN'S canvas WORK

GLOVES
3 PAIR **1.00**

Wool, nylon & rayon blend

WORK SOCKS PR. 44c

Nylon WORK GLOVES PR. 63c

FACE CLOTHS 4 FOR 39c

Terry TEA TOWELS PR. 99c



MEN'S

cotton & nylon windbreaker style

JACKET

regular 9.95

SPECIAL **7.88**



Form 201 58.06 JUL '65

Chinook flannelette

BLANKETS

PAIR **4.50**

CIGARETTES

Variety Special any kind

CTN. **3.29**



MEN'S

with hood lined

Tractor

JACKET

12.88