

THIS LABEL IS ON EVERY PACKAGE

1 lb. 25c.

Haszard's Improved



Turnip Seed

Imported direct from the grower and put up by

GEO. CARTER & CO.

CHARLOTTETOWN, P. E. I. LAND SEEDSMEN

SPECIAL NOTICE.

OUR stock of IMPORTED HASZARD'S IMPROVED TURNIP SEED is grown exclusively for us by the largest seed growing establishment in the East, from true, pure seed supplied by us for the purpose. This stock of seed is usually fifty per cent. advanced on the cost of ordinary seed, owing to the extra care taken in growing it.

Avoid so-called "Haszard's" sold at low prices. The genuine article is the result of great care in selection and can never be sold low. Avoid so-called "Haszard's" Seed peddled through the country. It is far more likely to be something else than the genuine article, and you risk losing your crop by experimenting. "Carters' "Haszard's" in sealed packages is always safe, and is the best. Deal with experienced Seedsmen.

CARTER'S Haszard's Improved is sold in sealed card board boxes, labelled as above, in 1/2 lb., 1 lb., and 1 lb. sizes. For select our Seed Store and by over one hundred merchants in the leading trade centres of Prince Edward Island. Price per lb. 25 cts.

Ask for Carters' Haszard's Improved.

GEO. CARTER & CO.

SEEDSMEN

Horace Haszard

Manufacturers Agent

REPRESENTING

The Acadia Sugar Refining Co, Limited

- Extra standard Granulated
- Extra Circle C.
- Yellow Extra C.
- Paris Lump
- Golden Syrups.

Samples and prices mailed upon application.

Horace Haszard,
P. E. I. Agent.

Messrs. J. Lewenz & Hauser Bros,

TEAS

Indian, Saryune, Congou and Blends.

Horace Haszard,
Agent.

PURE INDIA TEA.

The famous BRAHMIN brand direct from the gardens.

Horace Haszard,
Agent for Canada,

Flour, Cornmeal &c.

Howard, Planet, Indiana, Mapleleaf, Rolled Oats, Wheat Bran, K. D. Cornmeal, White Beans.

Prices quoted in car lots delivered to any point on P. E. I. connected by rail or water.

Horace Haszard
Miller's Agent

IN STOCK AND TO ARRIVE.

- Choicest Porto Rico Molasses,
- Bright Barbados, do
- Porto Rico Sugar,
- Demerara Crystals,

HORACE HASZARD,

Office and Sample Rooms

.....Cameron Block, Queen Squar

Charlottetown,
9th May, 1898.

MOTORMAN O'REILLY CASE.

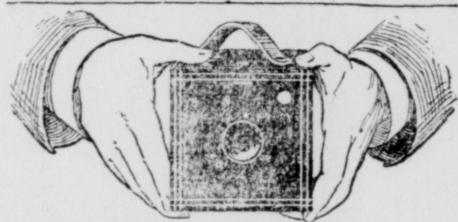
He was Cured of Diabetes by Dodd's Kidney Pills, Everything else Failed.

TORONTO, May 30.—(By Telegraph.) With reference to his experience with Dodd's Kidney Pills, and Diabetes, Mr. T. H. O'Reilly, Toronto Street Railway motorman No. 624, writes corroborating the report of his cures.

Mr. O'Reilly says:—"For three years I suffered horribly, in spite of all the medicines I tried. Not one of them gave the same relief. I endured the torture of scalding pains while urinating, and all the other agonies of diabetes.

"Finally I was induced to give Dodd's Kidney Pills a trial. The very first dose did me good and I got better and better with each succeeding dose. Three boxes worked a thorough and complete cure."

There is no Kodak but the Eastman Kodak.



Kodak Photography Is Easy Photography

All 1898 Kodaks use our light-proof film Cartidges and can be Loaded in Daylight.

\$5.00 to \$35.00.

EASTMAN KODAK CO. Rochester, N. Y.

Aching and Ulcerating Teeth

Treated and filled. Decayed teeth crowned with gold. Moderate prices.

DR. J. P. MURRAY

NOTICE.

Having leased the privilege of fishing trout on the stream known as Sherry's Creek, to parties in Ch'town you will please take notice that no person will be allowed to fish but them.

P. & T. SHERRY.

101 Imo eod

Wants, Lost, Found, &c.

WANTED—First-class Engineer. Apply at M. & M. Battenbury's Pork Factory. 127

WANTED—A general servant, reference required. Apply to Mrs E. R. Brown, upper Prince st. 126

WANTED—A girl or general housework, good wages. Apply to the Central House 126 W

TO LET—A conveniently situated and comfortable house on Upper Hillsboro St, with bay window and six rooms, besides large pantry, and large closets class L. Apply to Mrs. A. J. Brown, at Mark Wright & Co's. 126 W

TO LET—That beautifully situated house on Brighton Road, now occupied by Mrs Cameron, containing nine rooms and bath-room, and heated by hot water, and fitted for electric light. Possession given June 15th. Apply to W. C. Harris, Architect. 125

PASTURE TO LET—Within city limit's Water thereon. Apply to J. A. Longworth.

STORE TO LET—in a short time—The shop occupied by Johnson & Johnson, Drugists, next to London House Corner. Apply at once to Goff Bros 216-2wks

WANTED—Immediately, a capable housemaid. Reference required. Apply to Mrs. F. Parker Carvel. may 27-1w

TO LET—A cottage on West St H. C. Douce may 27-1w

PASTURE for a few cows at Westwood Dr. G. A. Warouton 118 W

WANTED—Agents for new season, new samples, new plan of engagement. Lane Bros Co., Montreal.

WANTED—A Cook. Apply to Mrs. F. W. Hyndman, Kent St. 117

TO LET—On Haviland Street, opposite the Charlottetown Hospital, a house containing nine rooms, at present occupied by Conductor Gillis. Possession given about 10th June. Beautiful location, rent moderate. Apply to Mrs Connolly next door, or to John Connolly, corner Queen and Dorchester sts. 116

TO LET—A comfortable cottage on Richmond St west. Possession given June 1st, or earlier, if desired. Apply to James D. Mason.

TO LET—The house and premises known as the "Old London House," situated on Water St., next to Government Warehouse No 1. Apply to Peake Bros & Co. Jan 28-1w

WANTED—An experienced cook, wages \$10.00. Apply to Mrs E. Bayfield. 97

WANTED—Successful canvassers in any line to act as closers, \$50.00 per month and expenses. Address box 679, Montreal.

TO LET—That comfortable and pleasantly situated house on upper Queen St., being the southern half of the residence of the late Chief Justice Palmer, now in occupation of Commander Cheyne. Hot and cold water in bath, rent moderate, possession given 1st May next. Apply to J. H. JAMES PALMER Ch'town.

IDEAL SUMMER RESIDENCE—To let for the summer months, a cottage containing seven rooms, situated at Water side, fronting on Pownall Bay. First-class fruit and vegetable garden in connection. Address J. M. Haley, Waterside, Pownall Post Office, P. E. Island. 119 61 2aw

SHOE HIEROGLYPHICS.

Occult Symbols That Have Been Devised to Deceive Womankind.

"People often ask me the meaning of the apparently crazy hieroglyphs and figures that are stamped on the inner side of the uppers of ready made shoes nowadays," said an F street shoe dealer. "As every shoe manufactory has a secret stamp code of its own and there is, therefore, no possibility of the general public learning more than that such codes exist, I may as well tell you that the vanity of modern mortals, and especially women, is at the bottom of these peculiar stamped characters and figures. You'd be surprised to know, for instance, how many women there are who imagine that they wear a No. 3 shoe when in reality their size is a couple of figures larger. A shoe salesman who understands his business can tell precisely the number of the shoe a woman customer wears at a glance. But as often as not a woman whose foot is a No. 5 calls for a shoe a couple of sizes smaller, and the mysterious stamped hieroglyph scheme was devised for the purpose of encouraging her in the belief that her foot is a couple of sizes smaller than it really measures in shoe leather.

"When a woman calls for a No. 3 to fit a No. 5 foot, no shoe salesman of this era who cares anything for his job is going to say, 'Madam, your foot requires a No. 5.' He simply breaks out a shoe of the style she requests that he feels confident will fit her comfortably and lets it go at that.

"A woman rarely thinks to inquire if the shoe is really of the size she asked for, for she takes it for granted that the salesman has given her what she demanded. But when a woman does ask, for instance, 'This is a No. 3, is it?' it's the salesman's business to unblushingly reply, 'Yes'm, it's a No. 3.' The woman customer might examine the hieroglyphs inside the uppers for a week without finding out any different, and even if she had the key to the puzzle it would only make her feel bad; so what would be the use?"—Washington Star.

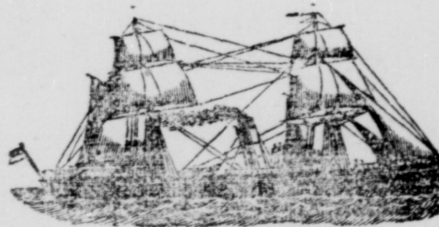
ARITHMETIC 1700 B. C.

Sums Over Which Egyptian Children Puzzled Their Brains.

Probably the oldest copy book for home lessons in arithmetic was recently unearthed in Egypt. The papyrus, which was found in excellent condition, dates from the period about 1700 B. C.—that is, about 100 years before the time of Moses, or almost 3,600 years ago. It proves that the Egyptians had a thorough knowledge of elementary mathematics almost to the extent of our own. The papyrus has a long heading, "Direction how to attain the knowledge of all dark things," etc. Numerous examples show that their principal operations with entire units and fractions were made by means of addition and multiplication. Subtractions and divisions were not known in their present form, but correct results were obtained nevertheless.

Equations are also found in the papyrus. Among the examples given is this one: Ten measures of barley are to be divided among ten persons in such a manner that each subsequent person receives one-eighth of a measure less than the one before him. Another example given is: There are seven men, each one has seven cats, each cat has eaten seven mice, each mouse has eaten seven grains of barley. Each grain of barley would, if cultivated, have yielded seven measures of barley. How much barley has been lost in that way? The papyrus also contains calculations of area, the calculation of the area of a circle and its transformation into a square, and finally calculations of the cubic measurements of pyramids.—Philadelphia Record.

THE CHARLOTTETOWN STEAM NAVIGATION COMPANY,



STEAMERS. . . .

Northumberland & Princess Leave as below every day (Sundays Excepted)

From POINT DU CHENE (on arrival of afternoon train from St. John) for Summerside, connecting there with express train for Charlottetown.

From SUMMERSIDE (on arrival of morning train from Charlottetown) for Point Du Chene connecting with day train for St. John.

Connect on at Moncton with train for Canada and at St. John with Steamers of International Line and Railways for United States and Canada.

From PICTOU (on arrival of day train from Halifax) for Charlottetown.

From CHARLOTTETOWN, seven p. m. (local) for Pictou, (connecting there with day train for Cape Breton and Halifax, at Halifax with C. A. & P. Line foroston.

F. W. HALES

Ch'town, P. E. I.

SECRET A

For 10 cents

in cash or stamps, we will mail you, all charges prepaid, a handsome metal box, size 5 1/4 inches long, 3 1/2 inches wide and 1 inch deep, filled with TETLEY'S ELEPHANT BRAND INDO-CYLON TEA, 50 cents per lb. quality. The box alone is worth the money—the Tea it contains is worth more than the money.

It's offered as an inducement to make you acquainted with the delicious Elephant Brand Teas, and incidentally to see where our advertising is best read—and so kindly mention the paper.



TETLEY'S ELEPHANT BRAND INDO-CYLON Teas are sold only in 1/2 and 1 lb. lead packets, never in bulk and can be had from most centers in good groceries in Canada. At the price printed on each packet (25 cents to \$1.00 per lb.) they are considered to be the

Best of Tea Values.

JOSEPH TETLEY & CO.

14 LEMOINE STREET.

MONTREAL.

The Way to Get Good Reliable Whisky in to Ask Some Reliable Dealer For

"MORNING DEW SCOTCH WHISKY"

This rare old whisky is guaranteed TEN YEARS OLD, and is the product of the most noted stills in the Highlands in Scotland.

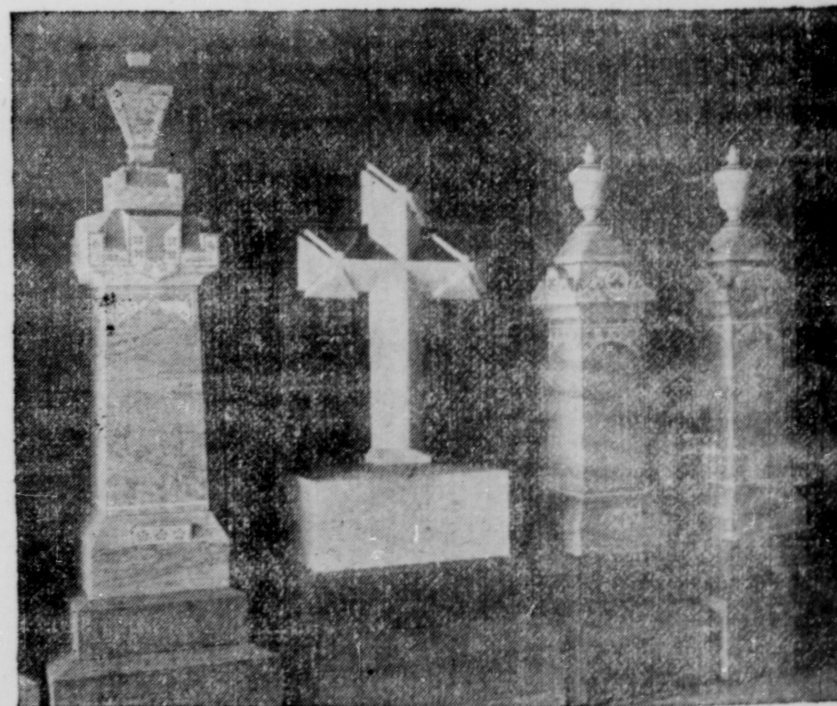
Ask for the "Black Label

MORNING DEW SCOTCH

For Sale By All Licensed Vendors



A LARGE ASSORTMENT OF Finished Monuments



Cairns & McFadyen

Kent Street, Ch'town