

ALL WELCOME
WEST HALLAM, England, (CP) Women reluctant to attend church in this Derbyshire town because of shabby clothes have been reassured by Rev. Gordon Spencer. He said they should come in wearing clothes if necessary, because clothes "make no difference."



Girl Guide News

GUIDERS CLUB

The regular monthly meeting of the Queen's County Guides Club was held on October 15th at the home of Mrs. Arthur Welner, Southport. After a delicious meal served by the Southport ladies, the President, Mrs. J. W. Rodd, opened the meeting and welcomed Mrs. Ira Younker and Miss Joyce Wiggington as new members. Several suggestions were given for the Browne and Guide Shields for 1954. Two vacancies on the executive were filled—vice-president, Mrs. Leslie MacKay; Guide telephone committee, Miss Betty Pendleton. Following the meeting, Miss Suzanne MacKinnon enrolled Joyce Wiggington leader of the 7th Charlottetown Company. Mrs. W. W. Reid invited the members to her home for the November meeting.

FIRST CLASS HIKE

The First Class Hike for Guides of Charlottetown and vicinity was held on Saturday afternoon, October 17th. Some fifty-seven Guides hiked from the approach of the Hillsborough to the home of Mrs. Nell Matheson, Southport. The examiners for the hike were Mrs. Myron Bell and Mrs. James MacLean. The successful candidates were: Beverly Block, Ruth Burke, Paula Good, Joan Wilson, Susan Whiteside, Noreen MacLean, from the 11th (Zion) Company; Brenda MacKay, Penny Warren, Marlene Gregory, from the 15th (Parkdale) Company; Winnifred Anne MacMillan, Norma Duvar, from 1st (St. Peter's) Company; Mary Johnstone, Matilda MacMillan, Joyce MacKinnon, Wayne MacDonald, Betsy Houston, from the 7th (Trinity) Company; Deanna Mills and Betty Rodgers from the 1st Southport Company.

GUIDES ENROLLED

On Friday evening October 16th Miss Gladys Hart the International

Financial Statement

Continued from page 5

the time of writing this report. "There is a change in the status of the advance from the Potato Promotion Committee of the Department of Agriculture since our last report. The Committee has advanced another \$5,000.00, and the Board's promotional expenses which the Committee would ordinarily spend itself. The advances are still subject to repayment, however, if conditions warrant. "The Board, administered the Starch Program for assistance to producers in 1951. There is remaining a balance in the bank of \$3,138.33, which represents amounts payable to certain producers under the scheme, but which have been withheld for the present, because they still owe the Board on levy account. "Expenses exceeded income by \$1,639.90, which reduced the surplus of May 31st, 1951, from \$7,353.50 to \$5,713.60. "Subject to the foregoing com-

al and Camp Commissioner enrolled the following Guides in the 12th Charlottetown Company at Zion Church Hall: Betty Morrison, Joyce Archer, Shirley Boiesner, Sandra Sutherland, Marilyn MacDonald, Catherine Genge, Marjorie Stewart, Donald Mills, Marilyn White, Betty Gamester, and Anne Moore. Diane Burgoyne was later enrolled by the District Commissioner. Following the enrolment Miss Hart spoke briefly to the Guides on the meaning of their promise and closed the enrolment ceremony with a prayer.

ments, we report that, in our opinion, the attached Balance Sheet and accompanying schedules are properly drawn up so as to exhibit a true and correct view of the state of the Board's affairs as at May 31st, 1952, and of the operating results for the year ended on that date, according to the best of our information, the explanations given to us, and as shown by the books of the Board."

Balance Sheet May 31st, 1952

Assets
Cash in Bank, \$2,710.36; Unpaid Producers' Levies \$35,685.24; Less: Reserve for Uncollectible Accounts, \$27,918.24—\$7,768.00. Total \$10,478.36.

Liabilities
Advance from the Potato Promotion Committee of the Department of Agriculture, \$4,764.76; Surplus—Balance, May 31st, 1951, \$7,353.50; Less: Excess of Expenses over Income for the year \$1,639.90—\$5,713.60. Total, \$10,478.36.

Statement of Income and Expenses for the year ended May 31st, 1952:

Income:
Producers' Levy, \$20,701.60; Less: Provision for Uncollectible Accounts, \$11,339.80—\$9,361.80; Dealer's License Fees, \$285.00. Total, \$9,646.80.

Expenses:
Services—Salaries, chairman and manager, \$4,328.32; fees to other Board members, \$220.00; travelling expenses, \$1,370.07; telephone and telegraph, \$367.49; publications, \$404.75; advertising, \$170.52. Total, \$6,851.15.

Administration—Salaries, office, \$1,775.00; rent, \$398.00; office equipment, \$297.00; office supplies, \$140.23; stationery and printing, \$39.63; postage, \$81.00; insurance,

THE P. E. I. REGT. (17 RECCE)

Annual Rifle Classifications will be carried out at Squaw Point Rifle Range on Saturday and Sunday, 24-25 Oct. 53.

Personnel from all Sqns. in the Charlottetown Area will fire on Saturday afternoon commencing at 1430 hours. Transport will leave the Ordnance Compound and Armouries, for the Range at 1400 hours Saturday afternoon.

Hq, "B" and "C" Sqns. will fire on Sunday commencing at 1000 hours.

Transport will leave the various centres as follows:—

- Summerside 0845 hrs.
- Kennington 0900 hrs.
- Rustico 0900 hrs

Dress: Berets, Battle Dress, Web Belts, Boots and Puttees.

(A. W. ROGERS) Lt.-Col.
Commanding Officer
P.E.I. Regt. (17 Recce)

\$205.00—\$5,205.00. Total \$10,205.00. 141.46; Florida tests expenses \$983.—Deduct: Salary, \$2,100.00; trav- \$37; miscellaneous \$173.53—\$5,440.24; ellings, \$1,041.88; advertising, \$1.—balance, May 31st, 1952, \$4,764.76.

Only GILLETTE ONE-PIECE RAZORS Combine These Advantages!

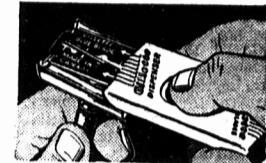


- ▶ Instant Blade Changing
- ▶ Real Shaving Comfort
- ▶ Double-Edge Economy

Gillette DELUXE ROCKET
Gold-plated, one-piece razor plus 10 Gillette Blue Blades in dispenser with used-blade compartment, all in modern Styrene case that opens at a touch. **\$1.59**

▶ For the fastest, best-looking, most refreshing shaves ever—get a modern Gillette one-piece Razor. Enjoy instant blade changing, real shaving comfort and double-edge economy. Important advantages only Gillette combines.

Gillette REGULAR ROCKET
One-piece, nickel-plated razor and improved 10-blade dispenser, in handy **\$1.29** Styrene travel case.



TIRE HEADQUARTERS for GOOD YEAR SALES and SERVICE

SUPER-CUSHION
For a smoother, softer, safer ride!

MARATHON
Plenty of extra mileage at a real low price!

STUDED SURE-GRIP
Tread designed to give sure traction on any road in any season.

LOOK FOR THIS "HIGH SIGN" OF QUALITY

HORNE MOTORS LIMITED
CHEVROLET AND OLDSMOBILE
WHITLOCK TIRE SERVICE
VULCANIZING

GOOD YEAR DEALER

Hereford Breeders Meeting

The annual meeting of the Prince Edward Island Hereford Breeders Association will be held in the office building of the Provincial Department of Agriculture Monday, October 26th at 8 p.m.

GEORGE C. KITSON, President. NEIL A. MATHESON, Secretary.

NOTICE

I, Eugene P. Cullen, Minister of Industry and Natural Resources, hereby fix and prescribe an open season on Beavers in this Province from November 10th to December 31st, 1953, as provided under Section 3, Subsection 2 of "The Game Act".

DATED at Charlottetown, Prince Edward Island, this 20th day of October, A. D. 1953.

(Signed) EUGENE P. CULLEN.

BOUNTY

A bounty will be paid on SKUNKS, FOXES and RACOONS from this date to March 31, 1954 as follows:

- Skunks \$1.00 each
- Foxes \$2.00 each
- Racoons \$2.00 each

The bounty will be paid on presentation of skunk snout with portion of white stripe attached, on fox or racoon pelts which will be ear punched and remain the property of the applicant.

Bounty will be paid at the following receiving stations only:

- Royal Packing Co. Ltd., 119 Grafton Street, Charlottetown, P.E.I.
- P. E. I. Fur Pool Ltd., Water Street, Summerside, P.E.I.

DEPT. OF INDUSTRY & NATURAL RESOURCES, Charlottetown, Prince Edward Island, October 20, 1953.

SMART APPEARANCE
SMART PROTECTION
A SMART BUY!

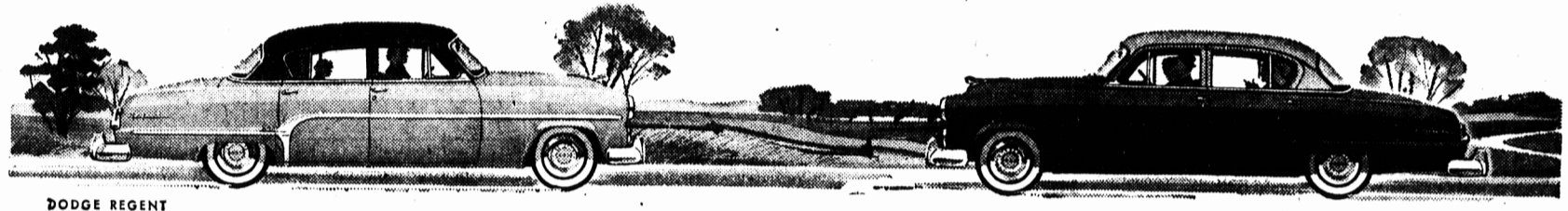
More than a hundred thousand men, women, boys and girls have worn the sports-styled, work-weight, all-wool top shirt, because it's a prize package of winter warmth.

The MURPHY-MADE "Jo" shirt is carefully tailored of selected woolen cloth. The style is right for work or sport. It can be worn with the tail in or out. Looks smart either way. You or your wife. That's why it's so popular to buy matched pairs for mother-daughter, father-son or boy-girl wear.

The "Jo" shirt is the modern, winter comfort jacket. Smart appearance, smart protection, a smart buy.

NOW AT YOUR MURPHY DEALERS

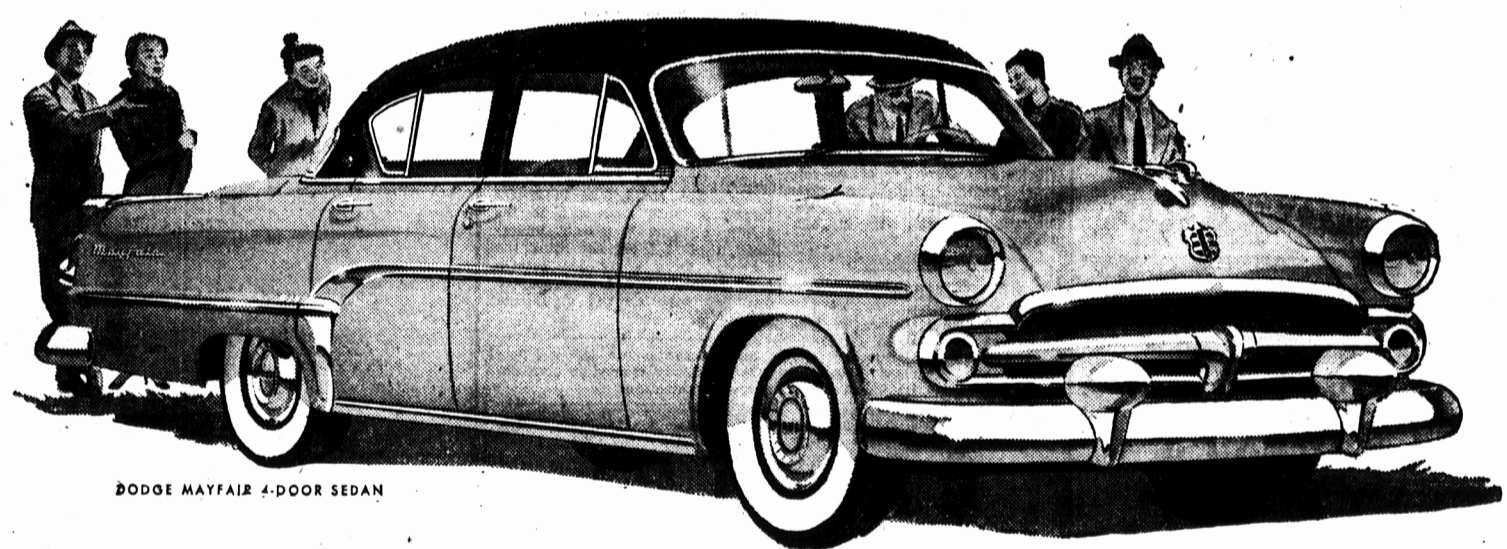
MURPHY'S LIMITED
HALIFAX NOVA SCOTIA



DODGE REGENT DODGE CRUSADER

there's wonderful driving ahead for you in the Dependable

DODGE for '54



DODGE MAYFAIR 4-DOOR SEDAN

So much more driving ease and safety can be yours

DODGE WITH HY-DRIVE

With Dodge Hy-Drive you just shift into high — and go! You can drive all day without shifting... manoeuvre through traffic... stop for red lights... glide off again with a smooth, silent surge of power. You soon forget about gearshift and clutch. There's nothing new to learn — if you wish to back up, or need extra power when driving through sand or mud — just shift in the familiar way.

DODGE WITH POWER STEERING

For the most effortless parking and steering you will find in any car — try Dodge Full Power Steering. From the moment you start your engine, hydraulic power takes over 4/5ths of the steering effort. You can't imagine how easy it is to park — to drive through traffic — to turn corners — to control your car on bumpy, rutted roads. You can turn the wheel with one finger — even when your Dodge is standing still.

New Power—Brilliant Performance—Fine Car Comfort

Never before such power, performance and fine car comfort — even for those who have owned a Dodge. One glance at the longer, more lively lines tells you there's wonderful driving ahead.

There's a new feel to the new, more powerful Dodge engine, designed to take full advantage of today's finer gasolines. You'll sense the nimble, fast response in your first few seconds behind the wheel.

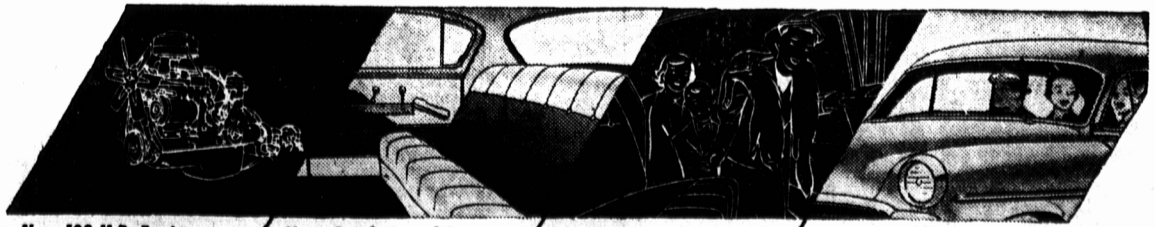
You ride on an improved system of spring suspension that smooths out rough roads three ways. Try it. You'll be delighted.

with how much more level — steadier — and softer it is... how easily this new Dodge takes curves and corners — sits low and hugs the pavement.

And there's interior luxury to match this new Dodge performance. Comfortable chair-high seats — deep cushions and bolsters — fine fabrics and vinyl in beautiful two-tone shades to harmonize with new trim and body colours.

Never before has Dodge offered so much. Come in today, test-drive the 1954 models and see for yourself. You'll find there's a car in the Dodge family that's right for your family.

SEE THEM TODAY AT YOUR DODGE-DESOTO DEALER'S



New 108 H.P. Engine
has a higher compression ratio to take advantage of today's finer gasolines — is rubber mounted for extra smoothness — has all the dependable long-life Dodge engine features.

New Comfort and Beauty
Interiors are completely redesigned and upholstered in the newest, long-wearing fabrics trimmed with vinyl. Interiors of Mayfair models are particularly luxurious.

Easy to Enter and Leave
Wide, high doors make all Dodge models easy to enter and leave. In two-door models the front seat is split 1/2 - 3/4 to provide entry to the rear compartment without disturbing front seat passengers.

Superb All-Round Vision
Chair-high seating, wide one-piece curved windshield and high, wide side and rear windows combine to provide unsurpassed, safe, all-round vision.

W. G. Barbour Ltd.
127 Euston St., Charlottetown
SEE YOUR NEAREST DODGE-DESOTO DEALER