



VETERAN GUARDIAN EMPLOYEES

Andy Martin, operating the ad-pressograph, has been with The Guardian for 48 years. Also are still active and manage to keep pace with changing times.

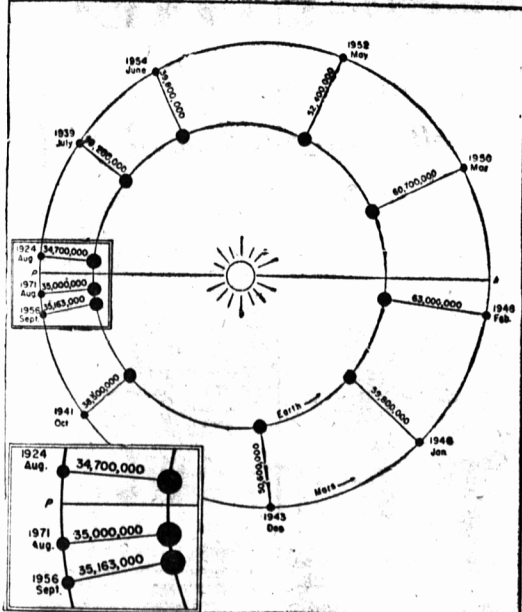
EASTERN GUARDIAN

LOWER Montague Regatta Wednesday, July 11. Send entries to Roy Aitken.

ALL TAXES owed Sinnott Road School District not paid by June 30 will be handed in for collection. By order of Trustees.

HERE FROM ONTARIO — Mr. and Mrs. James MacDonald and family of Chippawa, Ont., formerly of Rosemeath, arrived Saturday evening to visit relatives in this province. They are guests of their brother and sister, Mr. and Mrs. Ivan MacDonald Brudenell.

HIGHEST PEAK The highest peak in St. Lucia, the Windward Islands, is Mount Gimie, 3,145 feet.



MARS TO BE NEIGHBOR SOON

Scientists are making arrangements for an all-summer study of the planet Mars which, on Sept. 7, will be closer to the earth than it has been since 1924. The "black-light" mural, top, shows Mars with its spolar "cap" and the faint geometric markings sometimes called canals. Very close approaches occur only when Mars' opposition coincides with its perihelion (P), the point in its elliptical orbit at which it is closest to the sun. When opposition coincides with Mars aphelion (A), the point at which it is farthest from the sun, the planet's opposition distance from the earth is also the greatest.

PRIZES FOR EVERYONE

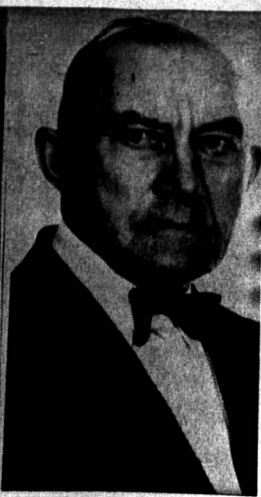
CANADA PACKERS COOKING SCHOOL. PARISH HALL — SOURIS TUESDAY, JUNE 26th AT 8 P.M. — ADMISSION 75c All Proceeds in Aid of Souris Hospital

Mayfair Theatre

MURRAY RIVER, JUNE 25-26—8:30 p.m. MONDAY - TUESDAY "The McConnell Story" In CinemaScope and Color Starring ALAN LADD, JUNE ALLYSON, JAMES WHITMORE "The true story of Joseph McConnell, America's triple jet ace—his life and his love": "Their love was strong—but his love of the air was stronger": "Tender romance—jet powered action in a story with the sky the limit." As an added attraction you will see— "HEART OF AN EMPIRE" In CinemaScope

Funeral of Mrs. M. P. Beaton At Flat River

The funeral of the late Mrs. M. P. Beaton was held on Wednesday, June 13th, from the home of her son, Mr. Alex Beaton, Flat River. The service was conducted by Mr. Lorry, student Minister of Wood Islands. Mr. Lorry spoke very feelingly of Mrs. Beaton's fine christian character and the great vacancy her death has created both in the home and the community. The 23 Psalm, "Safe in the Arms of Jesus," and "Abide With Me," were hymns sung by the Choir. The beautiful floral pieces and messages of sympathy were a deep and silent tribute to the esteem in which Mrs. Beaton was held.



Left to mourn the memory of a kind and loving mother is her son, Alex of Flat River, Christine Mrs. Norman Bell of Belle River, and Miss Florrie Beaton of Montague. Her husband predeceased her several years ago. Also left to mourn is her brother, Mr. Daniel MacPherson of Bellview, P. E. I., and a sister (Christine) Mrs. Dan Gammon of Morritton, Ont.

Following the service at the home the funeral cortege moved on to Belfast cemetery for burial. The pall bearers being James Beaton, Murdoch Gilmore, Robert Nicholson, Stanley McPhee and Alexander MacPherson.

Raft Driven Back By Gale

HALIFAX (CP) — The raft L'Egare, after making good progress last week, reported Sunday it was being driven backwards in heavy Atlantic gales. Capt. Henri Beadout reported to amateur radio operators Sunday that besides "going backward," no fish had been caught and low visibility made it impossible to give a position. When asked if the raft had suffered from high seas and gales, Capt. Beadout replied, "Enough." All was well with the three-man crew, however.

L'Egare, since May 24, has gone no further than 600 miles in her attempt to cross the Atlantic from Halifax.

TOP MINERAL By far the most important of Britain's extractive industries is coal mining. Another of this vicinity's oldest residents was called in death last week. She was Mrs. James Fitzgerald, who passed away on Monday after a long illness that kept her in the Charlottetown Hospital several months. Besides her husband she leaves a grown family who were all home to see their mother in her last days; along with several grandchildren. Her funeral, which was a very large one was held to the Church of St. Laurence, her home parish for a lifetime, there High Mass was sung by her pastor, Rev. E. Robin. Burial was in the church cemetery near by.

South May Determine The Candidate For Democrats

By JACK BELL WASHINGTON (AP) — The Democratic presidential race appeared heading today toward a point where the South might exercise a decisive convention choice between Adlai E. Stevenson and Governor Averil Harriman of New York.

If such a situation arises at the August party meeting in Chicago, the odds now seem to favor Stevenson for a nomination that suddenly acquired new lustre and then lost most if in the swift development of President Eisenhower's illness.

The first rapid rise of Democratic stock when Eisenhower was stricken Friday turned sharply downward with doctors' predictions that the president will be physically fit to run for a second term, despite the emergency operation he underwent Saturday for correction of an intestinal obstruction.

While Eisenhower himself must decide whether to follow through with his Feb. 29 decision to seek re-election, the medical prediction that he would be able to resume full activity in four to six weeks didn't slow up Harriman's plunge into the ring as an active candidate for the Democratic prize. Harriman indicated in telephone conversations with Democratic lead-

ers that he plans to combat Stevenson openly for support of the remaining convention delegates who are yet to be chosen in state meetings.

ACTIVE CONTENDER Harriman's announcement Saturday that he is a full-fledged contender appeared to reflect his belief that the candidacy of Senator Estes Kefauver has crumbled despite the delegates the Tennessee senator has collected in four months of primary campaigning.

Stevenson already has written off Kefauver with the observation that Harriman seems now to be his strongest rival for the nomination. While Stevenson hasn't said so publicly, there is no doubt he believes Kefauver eventually will wind up in the Harriman camp. If Kefauver chose to do so and could throw a sizable number of votes to Harriman, southern delegates thus far uncommitted might face a choice between the two leaders that could give one of them the nomination.

The largest bloc of publicly uncommitted delegates at the convention seems likely to converge around Senator Lyndon B. Johnson of Texas, the Senate majority leader.

There doesn't seem much doubt that in a showdown between Ste-

enson and Harriman, Johnson would side with Stevenson. Johnson has been preaching "Moderation" for the Democrats, a theme Stevenson has used.

MODERN STORAGE

KELOWNA, B. C. (CP)—British Columbia Tree Fruits Ltd., a growers' co-operative, will investigate the use of "controlled atmosphere" storage for the B. C. interior's famed apple crop. Now used in the United States and eastern Canada, the system keeps apples in prime condition longer than conventional storage.

P.E.I. Regiment Church Parade Held Yesterday At Montague

Approximately 125 officers and men participated in the P. E. I. MacNevin I.C. B. Squadron, Montague, whose commanding officer is Maj. M. E. Campbell with Capt. P. Ford as 2 I.C.

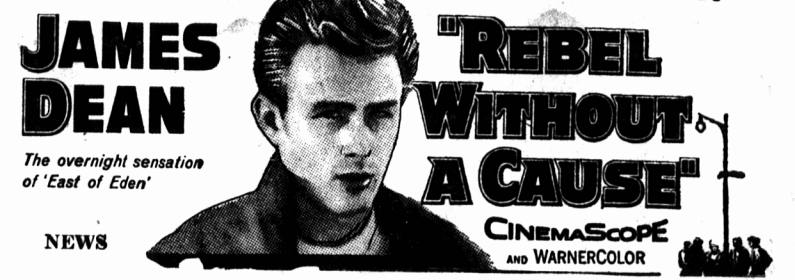
Upon return to the Armouries the Parade was greeted by Mayor Yeo, who, on behalf of the citizens of Montague, thanked the Regiment for a fine showing. He went on to say that as they were trained in an emergency, would be guarded in their hands and they may well be called "The Security Army" in place of the Militia. He also congratulated them on their smart appearance, and snappy marching and hoped that the P.E.I. Reg't may feel welcome to return at any time.

THE YEAR'S MOST POWERFUL DRAMA PORTRAYAL!

Jim Stark — from a "good" family — what makes him tick . . . like a bomb?

THE SMASHING STORY OF A TEENAGER CAUGHT IN THE UNDERTOW OF TODAY'S JUVENILE VIOLENCE!

WARNER BROS. PUT ALL THE FORCE OF THE SCREEN INTO A CHALLENGING DRAMA OF TODAY'S TEENAGERS!



JAMES DEAN "REBEL WITHOUT A CAUSE" NEWS MATINEE 3:30; EVE. SHOWS 7 AND 9 TODAY and TUESDAY — CAPITOL

YEO THEATRE MONTAGUE
Mon - Tues
June 25 - 26
Adm. 30 - 46
Inc. Prov.
Gov. A. Tax.
"MARTY"
Ernest Borgnine - Betsy Blair.
The Academy Award winner for the best picture in 1955—a poignant warm realistic drama—sincerely told and photographed—wonderful life images—terrific—one of the best—none better—few as good.
Opening Wednesday and Thursday "THE GIRL RUSH"

NORTH RIVER Drive-In Theatre
TONIGHT
THE POSSE RODE OUT FOR A LYNCHING . . . THE SHERIFF RODE OUT TO STOP IT!
In his greatest picture, with all the greatness of the great southwest. WHEN SIX GUNS SPOKE THE LAW . . . a sheriff has no friends. . . SEE . . .
BRODERICK CRAWFORD . . . JOHN DEREK CHARLES BICKFORD . . . WANDA HENDRIX
in
"LAST POSSE"
EXTRAS! COMEDY and COLOR CARTOON
BOX OFFICE OPENS 7:45 — SHOW AT DUSK
Come as you are. Bring the KIDDIES!

NOTICE
TO STRAWBERRY GROWERS IN MONTAGUE & GEORGETOWN AREAS.
Special meeting will be held Tuesday evening at 8 p.m. in the Co-op Super Market, Montague.

CHOOSE FROM THE ASSORTMENT OF FINE TV RECEIVERS AT EATON'S
Choose from these well known makes . . . VIKING, RCA VICTOR, EMERSON, WESTINGHOUSE, GENERAL ELECTRIC. All feature the finest in TV reception! Buy by comparison at Eaton's!



New 21" DeLuxe VIKING Console with DYNAVISION!

Emerson	Westinghouse	General Electric
21" screen with 17 tubes. Rich walnut finish.	21" screen with 22 tubes. Walnut finish.	21" screen with General Electric "Ultra-Vision".
EACH 239.00	EACH 289.00	EACH 229.95

21" RCA VICTOR TV SETS Low Priced!



Dynavision! One of the most-talked-about features in TV this year. 21" aluminized picture tube, sloping tinted safety tele-lens. 22 tube "Ultronic" chassis, power transformer. Front-mounted high compliance speaker. AC convenience outlet for your lamp . . . phono jack for a record player attachment . . . 5-ply wood veneer cabinet. 35" high, 24" wide, 22 3/4" deep.

WALNUT VENEER Each 299.75	MAHOGANY VENEER Each 304.75
---------------------------	-----------------------------

Popular table model with base! An outstanding buy! Smartly styled metal cabinet with a rich dark finish! Space-saving 90 degree aluminized picture tube. Sharp contrast. Easy, convenient side tuning. Clear FM sound.

EACH 199.95

STORE HOURS:
MONDAY TO FRIDAY 9 A.M. to 5:30 P.M.
SATURDAY 9 A.M. to 12:30 P.M.
TELEPHONE 6598

IN EFFECT NOW ON TELEVISION RECEIVERS NO DOWN PAYMENT THE T. EATON CO. LIMITED CHARLOTTETOWN BRANCH