

PRINCE EDWARD ISLAND,

Information for Tourists and Others
Time Tables, etc.

Prince Edward Island has many attractions for tourists, and it is expected that this season the influx of visitors will be very large.

HOW TO GET TO CHARLOTTETOWN

The steamer Halifax leaves Boston for Charlottetown every Saturday at noon and will be at Charlottetown on Monday night. The following Tuesday at one she will be on return to Boston. Halifax and Hawkesbury are called at every day. Passengers may take the steamer any of the ports mentioned. The Halifax will be supplemented by the Grand Duchess later in the season.

The steamer City of Ghent plys between Halifax and Charlottetown each week, calling at several ports en route. She is due here every Thursday.

The steamers Coban, Bonavista, Campana, Tiber and Polino, of Montreal, also make Charlottetown a port of call.

Passengers for this Province coming by way of Picton are brought to Charlottetown by the steamer Princess. Those coming by way of Point Du Chene connect with the steamer Northumberland, and may come through to Charlottetown by the mail special which leaves Summerside each evening immediately after the steamer reaches that port.

HOTEL AND OTHER ACCOMMODATION.

Hotel Davies.....	Charlottetown
Queen Hotel.....	"
Revere Hotel.....	"
Eureka House.....	"
Rankin House.....	"
Lepage House.....	"
Putley House.....	"
Duncan House.....	"
Railway House.....	"
Cantwell House.....	"
Clifton House.....	Summerside
Russ House.....	"
Campbell Hotel.....	"
Aitken House.....	Georgetown
Tapper House.....	"
Sea View Hotel.....	Souris
Ocean House.....	"
Landisdown Hotel.....	Cape Traverse
Albion Terrace.....	Alberton
Wisener House.....	"
Seaforth House.....	"
Railway Hotel.....	Tignish
Clarke's Hotel.....	Kensington
Commercial Hotel.....	"
Macdonald House.....	Montague
Clark's Hotel.....	Mount Stewart
Manson House.....	"
Acadia Hotel.....	Tracadie Beach
Seaside Hotel.....	Rustico
Pleasant View House.....	Hampton
Florida Hotel.....	Pownal
Cliff House.....	Stachope
Mutch House.....	"
Shaw's Hotel.....	Brackley Point
North Shore House.....	Malpeque

There are many other hotels throughout the province, as well as a good many farm houses, where excellent accommodation may be obtained at a reasonable rate.

ROCKY POINT FERRY

The steamer Elfin plies between Prince Street wharf and Rocky Point daily, (Sundays excepted) as follows:

Will leave Prince Street Wharf
At..... 6.30 a. m.
"..... 8.00 "
"..... 9.30 "
"..... 11.00 "
"..... 1.00 p. m.
"..... 2.00 "
"..... 4.00 "
"..... 6.30 "

Will leave Rocky Point:
At..... 7.00 a. m.
"..... 8.30 "
"..... 10.00 "
"..... 11.30 "
"..... 1.30 p. m.
"..... 3.00 "
"..... 5.00 "
"..... 7.00 "

SUNDAYS,

Will leave Prince Street Wharf:
At..... 9.00 a. m.
"..... 12.45 p. m.
"..... 2.00 "
"..... 4.00 "

Will leave Rocky Point:
At..... 10.00 a. m.
"..... 1.15 p. m.
"..... 3.00 "
"..... 5.00 "

TRAIN ARRANGEMENTS.

Trains for Summerside and points west leave Charlottetown each morning at 7.30, and each afternoon at 4.10.

Trains for points east leave Charlottetown each day at 8 a. m. and 3 p. m.

The train for Cape Traverse Charlottetown each afternoon at 6.

Tourists Information Bureau.

Visitors to Prince Edward Island who desire information, relating to hotels, and boarding houses, trains, boats Livery stables etc. and how to reach the different seaside and country resorts, fishing places etc. can obtain the same by calling on or writing to Messrs Johnson & Johnson arrangers, Prowse Block Ch'town. All information cheerfully furnished free of charge.



SPRING SALE NOW ON WEEKS & CO.

Money can be saved by trading at the People's Store
Goods bought for cash and marked low

We quote below a few of our prices:—



Dress Goods.

Reg. price.	Our price.
Plain Black Lustre, double width	30 22
Fancy do. do.	32 25
Black Cashmere do.	28 20
do. do.	35 28
Special do.	60 45
Weeks' Special	65 50
Colored Dress Goods in large variety at very low prices.	

Dress Linings.

Reg. price.	Our price.
Single width cambric	7 6
Percalines	16 14
Linenettes, best quality	16 13
Surah Twill	18 15

GLOVES.

Reg. price.	Our price.
Black Lisle Thread	13 10
do. do. do.	15 12
Black Taffeta	18 16
Other prices	
20c. 22c. 24c. 28c. 32c. 38c. 44c.	

Perrins Kid Gloves.

Black & Colored 7 Stud Lacing \$1 35
2 Stud Fastener \$1 10 and \$1 35.
Above guaranteed.
100 Pairs Special Laced and Buttoned, Black and Colored 82c., regular \$1 10 & \$1 35.
5 Stud Black Lacing all sizes in stock, 90c for 60c

Handkerchiefs—Ladies.

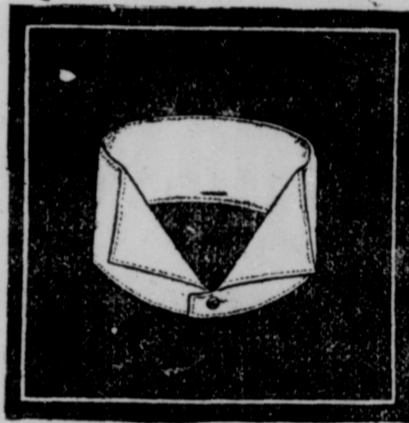
White Hemstitched	5c ea. 6 for 2
do. do.	9c ea. 6 for 5
White Embroidered	12c ea. 6 for 2
do. do.	18c ea. 6 for

Ladies' Linen Collars

All sizes 10c and 14c per pair
Cuffs to match 16c and 18c per pair

Gents Linen Collars.

Sizes 14½ to 17½, all newest shapes.
Special 4 ply linen 15c ea. 2 for 25c
4 ply do. 18c ea. 2 for 30c
3 do. do. 10c ea. 3 for 25c
Gents Linen Cuffs all styles and prices.
Weeks' special 25c pair 2 pairs for 45c



Gents White Shirts.

Reg. price.	Our price.
Unlaundried 14½ to 17½	40 32
do. do.	70 55
Our Special, Reinforced back and front \$1 for 75	

LAUNDRIED SIZES.

Reg. price.	Our price.
Good value	60 50
Extra value	85 70
Business Mens	\$1 15 \$1 00
Short Bosoms	1 15 \$1 00
Other values up to	1 65

Gents Neckties.

Large assortment in newest shapes. Knots, Four-in-hand, Puffs, Graduate Bows, American Tecks, Straps etc. Also a large variety in Black. Washing ties a specialty.



BRACES.

Our braces wear. Large stock on hand of English, and Canadian makes. See our special Leather ends at 16c, 20c 25c and 28c

Gents Hosiery.

Black Cashmere, summerweight Prices, 20c, 27c, 42c, 48c
Black Cotton, stainless 6c, 10c, 18c

Mens Underwear.

Cotton Linders and Drawers 20c ea. 37c suit
Balbriggan 35 and 50c ea. 60 and 90c suit.
Natural Lambs Wool in all sizes and prices.

Ladies' Hosiery

Reg. price.	Our price.
Black Cotton, plain	8 5
do do do	12 9
do do rib	15 12
do do do	19 17
Black Cashmere, 2-1 rib seamless-foot, special	40 32

Ladies' Belts.

Reg. price.	Our price.
Leather Belts, all colors	28 20
White Duck & Pique	28 20
Belt buckles and Blousettes, large assortment.	



Corsets.

Reg. price.	Our price.
Special	30 25
Our Leader	50 42
Beauty	65 50
Princess	75 65
All leading make at lowest prices in stock.	

Ladies' Blouses.

Fancy Cambric	48
do Muslin	60
do Colored Muslin	68
Fine Swiss Check	1.00
Scotch Gingham	1.20
Black Sateen	1.00

Black Sateen Detachable collars and cuffs) 1.60

UMBRELLAS.

Ladies Twill Cotton	40
do do do large size	55
do do half Silk	55
do do do	52
do do do	90
do do do	1.00
do do do	1.25
Better grades, up to	4.00
Gent's Umbrellas, all prices up to	4.50
Carriage Umbrellas	1.25

WATERPROOFS.

Bought direct from the manufacturers. Ladies—sizes 52-62 inches.
Black & Navy, heavy Twill Serge 3.80
do do Paramatta 4.70
do do do 6.90
Latest Styles, with sleeves 5.15
Gent's Black Paramatta 9.50
do Caddock 6.90

Linen Department.

TOWELS.

Pure Linen, 20x36, 14c each; 2 for 25c
do do 22x42, 20c each; 2 for 35c
A full line of best Irish Linen Towels always in stock.

Table Linens.

Reg. price.	Our price.
Unbleached Linen, 58 in. wide	26 30
do do 72 in.	
wide	55 38
Bleached Linens, 56 in. wide	42 35
do do 65 in.	72 47
wide, job	85 72
do do 66 in.	
wide, job	

Table Napkins.

Union—5/8 & 3/4 size. Prices—65c, 75c, 85c, 95c.
Pure Linen—5/8 & 3/4 size. Prices \$1.00, 1.15, 1.25, 1.45, 1.65, 1.85 and up to 5.00.
Colored Napkins, all prices.

Sheetings.

Reg. price.	Our price.
Unbleached, 72 in.	15 13

do	72 "	20
do	81 "	24
do	81 "	30
Bleached,	72 "	29
do	72 "	33
do	81 "	31

Pillow Cottons.

Plain,	42 in.	15	12
do	42 "	18	15
do	44 "	16	13
do	20 "	20	17
Circular,	42 "	17	14
do	42 "	18	15
do	44 "	23	20
do	46 "	24	21



Men's Caps & Hats.

Crash, Tweed, Navy Serge, } Newest Styles.
See our Tweed Caps at 18c.

MILLINERY.

Our department is in charge of Miss Vanstone, late of Toronto. Her work has been pronounced the best in the city. If you want a trimmed hat or bonnet she can please you. Give her a trial. Satisfaction guaranteed. Large stock of Straw Sailors, in Black, White and Colored; also straw and wire shapes for trimming. Flowers, Ribbons, Feathers, Ospreys, Mounts, Chiffons. Nets, ratchings, etc. Large variety to choose from. Grey Cottons, Bleached Cottons, Print Cottons, Gingham, Shirtings, Cottonades, Tweeds, Tickings, Embroideries, Curtains, Laces, Silks, and all other goods to be found in a First Class Retail Store. All our stock fresh and NEW.

Wool taken in exchange for Goods. Highest market price paid.
We ask a share of your patronage, knowing that you can save money by purchasing from us, as we buy for cash from the leading manufacturers.

Spring Sale Now On at WEEKS & Co

WHOLESALE AND RETAIL