

# Steel Nationalization Seems Near In Britain

By LAWRENCE MALKIN LONDON (AP) — Britain's steel industry is making a conversion to competition in prices, but the change may come too late to avert public ownership. Nationalization by the Labor government appears just around the corner.

Competitive forms that might persuade the Labor government to take another look at the whole question of government control of the steel industry.

Competition has been virtually unknown in Britain's steel industry for 30 years. During the depression, the Conservative government reorganized the industry into a huge cartel dominated by the official iron and steel board. Its goal was to guarantee price stability in exchange for modernization by the steelmakers.

But the world's oldest steel industry did not merge its small units into larger and more efficient groups until after the Second World War. By that time, a Labor government committed to a state takeover of the industry was in office. It nationalized steel in 1950, but a new Conservative government took office in 1951 and promptly denationalized the industry. It set up the present Iron and Steel Board, which fixes prices.

The steel companies wanted to raise prices earlier this year but were dissuaded by the Labor government, fighting to save its program of voluntary wage and price restraint. They finally raised them by four per cent April 1, making the announcement just before the March 31 national election.

**WOULDN'T GO ALONG**  
But one steel company, John Summers, refused to go along. Summers sells about one-third of the flat rolled steel in the country and is a major supplier for cars, refrigerators and the building industry. Richard Thomas and Baldwins, the only steel company still left in state ownership, also refused the maximum boost allowed. Others are expected to follow unless they are willing to lose business to Summers and RTB. Summers dumped the steel board's uniform price policy and adopted a flexible pricing system based on the distance of delivery from the mill. Summers was able to introduce his new policy and defy the British government's steel board because of a 1964 court decision overruling an agreement on heavy steel. But Summers has given no explanation for its move. It may be trying to force the government to introduce a new price policy before nationalization. Or it may be trying to force the industry into new

## EAST BALTIC

Louis Campbell returned to his home in Fairfield following surgery on his ankle in the Charlottetown Hospital.

Several of the school teachers in the Eastern Districts attended the teachers workshop in Souris recently.

Mrs. Arnett Robertson, Kingsboro, is a patient in the Souris Hospital.

Mrs. Reggie Rose is confined to her home in Kingsboro through illness.

Mr. Alfred Rose, Lakeville, entered the Charlottetown Hospital on Saturday.

## METAL BOILS ABOUT

The centre of the earth is thought to be a ball of molten iron and nickel 4,000 miles in diameter.

## NOTICE TO CONTRACTORS

**SEALED TENDERS**, addressed to the undersigned, Room E815, 400 Laurier Avenue West, Ottawa 4, Ontario, and marked as to content, will be received up to three P.M. E.D.T. on the 4th day of May 1966, for the supply of the following:

- 8-Transportable Three Bedroom Houses installed on foundations prepared by others at various sites in the Mackenzie District of the N.W.T.
- 10-Transportable Three Bedroom Houses F.O.B. Montreal, Quebec.
- Supervision of the erection of the 10 units mentioned in (b) above, on foundations prepared by others, at Frobius Bay, N.W.T.

Copies of the Form of Tender, Agreement, Plans and Specifications may be examined or obtained from the office of:

- Office of the Indian Commissioner for British Columbia, 303 Federal Building, Vancouver, B.C.
- Regional Office, Indian Affairs Branch, 344 Edmonton Street, Winnipeg 2, Manitoba.
- Agent, Northwest Territories Administration, Federal Public Building, 107th Street, Edmonton, Alberta.
- Regional Office, Natural and Historic Resources Branch, Customs Building, Calgary, Alberta.
- Regional Office, Natural and Historic Resources Branch, Immigration Annex, Terminal Road, Halifax, Nova Scotia.
- The Chief, Engineering Division, Northern Administration Branch, 400 Laurier Avenue West, Ottawa 4, Ontario.

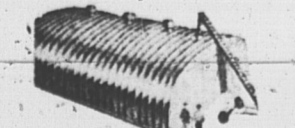
Copies of the Plans and Specifications may also be examined at the Builders' Exchanges at Edmonton, Calgary and Peace River, Alberta, Winnipeg and Brandon, Manitoba, Vancouver, B.C., Toronto and Hamilton, Ontario, Montreal, Quebec and Halifax, Nova Scotia.

Copies of the Plans and Specifications may be obtained on deposit of a certified cheque for \$25.00, payable to the Receiver General of Canada. The Deposit will be refunded if the Plans and Specifications are returned in good order within thirty days of the closing date for tenders. Each tender must be accompanied by a guarantee in the form specified in the "Instructions to Tenderers".

The Department is not bound to accept the lowest or any tender.

A. B. YATES, Chief, Engineering Division, Northern Administration Branch, Department of Northern Affairs and National Resources, Ottawa, Ontario.

## Franchise Available



Nationally known eastern firm of Trussless Steel Buildings in heavy gauge steel, for farm, industrial and commercial use are seeking distributors to merchandise in Eastern Canada. Persons wishing to make up to 30% commissions are asked to submit name, address and phone number to

Wunder Steel Buildings Ltd., Box 1058, Markham, Ontario, Phone 638-3198, Toronto, Ont.

## NOTICE TO CONTRACTORS

**SEALED TENDERS**, addressed to the undersigned, Room E815, 400 Laurier Avenue West, Ottawa 4, Ontario, and marked as to content, will be received up to three P.M. E.D.T. on the 4th day of May 1966, for the supply of the following:

- 4 - Prefabricated Insulated Garage Buildings—Standard Plan No. 437—F.O.B. Montreal, Quebec.
- 2 - Prefabricated Insulated Garage Buildings—Standard Plan No. 437—F.O.B. Hay River, N.W.T.

Copies of the Form of Tender, Agreement, Plans and Specifications may be examined or obtained from the office of:

- Office of the Indian Commissioner for British Columbia, 303 Federal Building, Vancouver, B.C.
- Regional Office, Indian Affairs Branch, 344 Edmonton Street, Winnipeg 2, Manitoba.
- Agent, Northwest Territories Administration, Federal Public Building, 107th Street, Edmonton, Alberta.
- Regional Office, Natural and Historic Resources Branch, Customs Building, Calgary, Alberta.
- Regional Office, Natural and Historic Resources Branch, Immigration Annex, Terminal Road, Halifax, Nova Scotia.
- The Chief, Engineering Division, Northern Administration Branch, 400 Laurier Avenue West, Ottawa 4, Ontario.

Copies of the Plans and Specifications may also be examined at the Builders' Exchanges at Edmonton, Calgary and Peace River, Alberta, Winnipeg and Brandon, Manitoba, Vancouver, B.C., Toronto and Hamilton, Ontario, Montreal, Quebec and Halifax, Nova Scotia.

Copies of the Plans and Specifications may be obtained on deposit of a certified cheque for \$25.00, payable to the Receiver General of Canada. The Deposit will be refunded if the Plans and Specifications are returned in good order within thirty days of the closing date for tenders. Each tender must be accompanied by a guarantee in the form specified in the "Instructions to Tenderers".

The Department is not bound to accept the lowest or any tenders.

A. B. YATES, Chief, Engineering Division, Northern Administration Branch, Department of Northern Affairs and National Resources, Ottawa, Ontario.

# A Real Money-Saving Event for You! ACT NOW!



Please, No Phone or Mail Orders! All Merchandise Subject to Prior Sale!

## LADIES' WEAR

**JEWELLERY**  
An assortment of earrings, pins, brooches, necklets, beads. Reg. 2.00. Special **1.49**

**NYLONS**  
Sheer Magic Seamless Hose, mini mesh, regular and Banlon top. Five nice spring shades in proportioned leg lengths. Sizes 8 1/2 - 11. Reg. 89c. Special **2 for 1.49**

**COSMETICS**  
Roll-on Deodorant. Reg. 3.00. Special **1.49**  
Perfume and cologne. Reg. 2.50. Special **1.49**  
Bath Salts. Reg. 2.00. Special **1.49**

**MATCHING NYLON GLOVE & SCARF SET**  
In attractive cardboard folder, ass't. spring shades, one size fits all. Reg. 1.98. Special **1.49**

**RAYON PANTIES**  
White, pink, blue. Size S. M. L. Reg. 59c. Special **3 for 1.49**

**COTTON HALF SLIPS**  
Elastic waist and embroidered hemline. Sizes S. M. L. Reg. 1.98. Special **1.49**

**BRASSIERES**  
Reg. and long line. Cotton with embroidered bust sections. Sizes 34B to 38D. Reg. 2.50. Special **1.49**

**KNEE SOX**  
Nylon, one size fits all. 8 1/2 - 11. Brown, red and navy. Reg. 1.00. Special **2 for 1.49**

**SPORT SOX**  
Nylon all white, one size fits all. 8 1/2 to 11. Reg. 1.00. Special **2 for 1.49**

**SCARF AND GLOVE SET**  
In attractive plastic fold, all nice spring shades, all sizes. Reg. 1.98. Special **1.49**

**JEWELLERY**  
Pins, earrings, brooches, beads, necklaces. Reg. 1.00. Special **2 for 1.49**

**NYLONS**  
1st quality micro mesh seam free in four nice spring shades. Sizes 8 1/2 - 11. Reg. 59c. Special **3 for 1.49**

## CHILDREN'S WEAR

**CURTY NURSING UNITS**  
4 oz. and 8 oz. Reg. 49c. Special **4 for 1.49**

**GIRLS' HALF SLIPS**  
Sizes 8-14. Reg. 1.98. Special **1.49**

**TODDLERS SUN HATS**  
Assorted prints and plaids. Reg. 1.98. Special **1.49**

**BOYS' T-SHIRTS**  
Sizes 4-6X. Long and short sleeves. Ass't. Reg. 2.49. Special **1.49**

**BOYS' FLANNELETTE PYJAMAS**  
Sizes 4-6 in ass't. prints. Reg. 1.98. Special **1.49**

**GIRLS' ARNEL AND COTTON SLEEPWEAR PYJAMAS**  
Sizes 8-14. Gowns and Baby Dolls. Reg. 2.98. Special **1.49**

**GIRLS' COTTON SLIMS**  
Sizes 7-12. Assorted shades and patterns. Reg. 1.98. Special **1.49**

**ASS'T GIRLS' FLANNELETTE GOWNS AND PYJAMAS**  
Sizes 4-6. Reg. 1.98 and 2.98. Special **1.49**

**BABIES' PLASTIC PANTS**  
4 in pkg. Reg. 95c pkg. Special **2 for 1.49**

**GIRLS' COTTON SLIMS**  
Plaids and Plain. Sizes 4-6X. Reg. 1.98. Special **1.49**

**GIRLS' FLANNELETTE PYJAMAS**  
Sizes 8-14. Reg. 1.98 and 2.98. Special **1.49**

**TODDLERS SLEEPERS**  
Assorted styles, sizes 6 mos-4 years. Reg. 1.79 and 1.98. Special **1.49**

**GIRLS' KROYLON ANKLETS**  
Colors: Brown, navy, black, sizes 9-11. Reg. 98c. Special **2 for 1.49**

**GIRLS' COTTON SLEEPWEAR**  
Baby Dolls, Pyjamas. Sizes 4-6X. Reg. 1.98. Special **1.49**

## MEN'S WEAR

**BOYS' DRESS HOSE**  
In wool and cotton blends with nylon-Reinforced Heels and Toes. Neat knit in patterns in blues, greys, browns, olives. Sizes 7-10 1/2. Reg. 59c. Special **3 for 1.49**

**BOYS' COTTON SPORT SHIRTS**  
Full Button Front. Long sleeves, printed patterns in blues, reds, browns and olives. Sizes 8-16. Reg. 1.98. Special **1.49**

**BOYS' SHORTS**  
In brief style with elasticized waistband and double seat. Color white. Size 8-16. Reg. 89c. Special **2 for 1.49**

**MEN'S DOUBLE SEAT BRIEFS**  
Knit from a long wearing cotton yarn. Color white. Sizes S. M. L. Reg. 87c. Special **2 for 1.49**

**MEN'S TIES**  
In stripes, plaids and ombres. Many wash 'n' wears included. Shades in wines, blues, greys, browns. Reg. 2.00. Special **1.49**

**MEN'S STRETCH DRESS HOSE**  
100% Nylon with reinforced Heels and Toes, neat clock patterns in greys, black, wines, blues, browns. Sizes 10-12. Reg. 1.00. Special **2 for 1.49**

**MEN'S TIES**  
Large assortment of shades and patterns. Reg. 1.00-1.50. Special **2 for 1.49**

**MEN'S COTTON WORK GLOVES**  
Elasticized Wristband. Reg. 39c. Special **5 for 1.49**

**BOYS' BOW TIES**  
New Spring Fancy Patterns in wine, blue, grey, green. Reg. 59c-79c. Special **3 for 1.49**

**BOYS' TIE TACS**  
Assorted neat patterns. Reg. 59c. Special **3 for 1.49**

**MEN'S WORK HOSE**  
Wool and Nylon Blend with reinforced Heels and Toes. Color grey. Reg. 98c. Special **2 for 1.49**

**MEN'S 100% WOOL DRESS HOSE**  
Plain or Neat Clock Patterns in brown, wine, blue, grey, black. Size 10 1/2-12. Reg. 1.98. Special **1.49**

**MEN'S SPORT SHIRTS**  
Long sleeves with full button front. Checks, Plaids and Stripes in blue, olive, red, brown. Sizes S. M. L. Reg. 1.98-2.98. Special **1.49**

**MEN'S WORK HANDKERCHIEFS**  
Red and blue polka dot. Reg. 19c. Special **9 for 1.49**

**MEN'S WATCH BRACELETS**  
Expansion in gold or chrome color. Reg. 1.98. Special **1.49**

**BOYS' LONG SLEEVE FLEECE SWEATSHIRTS**  
Colors in racer green, blue, white, Oxford grey. S. M. L. Reg. 1.69. Special **1.49**

**BOYS' WOOL AND NYLON WORK HOSE**  
Color grey. Sizes 8-10. Reg. 59c. Special **3 for 1.49**

**BOYS' BELTS**  
In grey, black, brown. Sizes 22-30. Reg. 59c. Special **3 for 1.49**

**MEN'S LEATHER BELTS**  
Colors grey, black, blue, brown. Sizes 30-44. Reg. 1.98. Special **1.49**

**MEN'S AFTER SHAVE LOTION**  
Reg. 1.76. Special **1.49**

## CANDY

**POT OF GOLD CHOCOLATES**  
Ass't. Caramels, Nougats and Creams. Reg. 1.95. Special **1.49**

**PIPES**  
Genuine Briar. Reg. 1.98. Special **1.49**

**PIPE RACKS**  
Both Single, Double and Triple Models. Natural Wood Finish. Reg. 1.29 ea. Special **2 for 1.49**

**STRAND CHOCOLATES**  
2 lb. cello bags. Assorted centres. Reg. 79c each. Special **2 for 1.49**

## SPORTING GOODS

**BICYCLE TIRES**  
Long Wearing, made from best quality materials. For 24", 26" and 28" wheels. Reg. 1.98. Special **1.49**

**FISHING CREEL**  
100% waterproof, rubberized cloth with nylon mesh sides, 3 pockets with snap covers and adjustable shoulder straps. Color olive. Reg. 1.98. Special **1.49**

**VINYL RAIN SUIT**  
All Purpose 2 pc. Rain Suit. Complete protection for the outdoorsmen. Reg. 1.98. Special **1.49**

**ARROWS**  
Enjoy hours of fun and relaxation. Metal tipped. Reg. 59c ea. Special **3 for 1.49**

**GOLF BALLS**  
A better quality ball with extra tough covers for long life. Reg. 98c ea. Special **2 for 1.49**

## HOUSEWARES

**LAUNDRY BASKETS**  
All plastic large oval style, basket weave design in assorted pastel colors. Regular 2.49. Special **1.49**

**WHISTLING TEA KETTLES**  
All aluminum in the 1 1/2 quart size, stationary upright handle with good pouring spout. Reg. 1.89. Special **1.49**

**INDOOR CLOTHES LINE REEL**  
Portable, sets up in a jiffy in any room. Bright chrome plated, contains 24 feet of woven line. Reg. 1.98. Special **1.49**

**EGG BEATERS**  
Good quality chrome plated double agitators fitted with offset handle. Reg. 1.69. Special **1.49**

**LUNCH KITS**  
All metal Thermos brand kit with plastic carrying handle, holds a 15 ounce Thermos bottle. Reg. 1.69. Special **1.49**

**HAGERTYS SILVER FOAM**  
A special fine quality polish for sterling silver or gold in the 17 oz. size. Reg. 1.98. Special **1.49**

**RUBBERMAID DISH PANS**  
In the round or rectangular style in assorted pastel colors. Reg. 1.98. Special **1.49**

**PLASTIC CLOTHES LINE**  
An all weather clothes line for outdoors in the 3 1/2 inch size with 600 lb. breaking strength. Connected in 50 foot coils. Reg. 98c coil. Special **2 coils 1.49**

**WATERING CANS**  
For indoor plants, all metal brass finished with attractive decoration, long pouring spout and carrying handle. Holds 1 1/2 quarts. Reg. 1.98. Special **1.49**

## HARDWARE

**WALLPAPER PASTE POWDER**  
Just add water for smooth no lumping paste. 2 lb. packages, made by Le-pages. Reg. 98c ea. Special **2 for 1.49**

**MEASURING TAPE**  
Evans new style with see through top on case for exact inside reading. 6 ft. long. Reg. 1.89 ea. Special **1.49**

**LANTERN BATTERY**  
6 volt long life battery by Eveready. Fits most 6 volt lanterns. Reg. 1.89. Special **1.49**

**ADJUSTABLE WRENCH**  
Made of drop forged steel, 8" long, most popular for every day use. Reg. 1.69. Special **1.49**

**SHELLAC**  
Excellent for first coat on soft wood before varnishing. Quart bottles in white or orange colour. Reg. 2.19 qt. Special **1.49**

**FURNACE FILTERS**  
Fiberglass filters to clean and purify the air in your home. Treated with Hexachlorophene, all sizes 1" thick. Reg. 69c ea. Special **3 for 1.49**

**SPRAY PAINT**  
High gloss enamel in spray can for inside or outside use on wood or metal. Dries in 5 minutes, 20 colours. Reg. 1.69 ea. Special **1.49**

**CAR WAX**  
Johnson's Instant J. Wax. Cleans and waxes in one application. Spray can. Reg. 1.89 ea. Special **1.49**

## AUTO WAX KIT

Johnson's paste wax which cleans and polishes. Includes 2 applicator pads. Very easy to use. Reg. 1.89 ea. Special **1.49**

**HAMMER**  
Top quality forged steel with wood handle. Standard 16 oz. size. Reg. 2.19 ea. Special **1.49**

## CHINA

**CUPS AND SAUCERS**  
Ideal for everyday use. Assorted decorations. Reg. 39c ea. Special **5 for 1.49**

**TUMBLERS**  
9 oz. size. Ass't. Enamelled Decorations. Reg. 20c ea. Special **8 for 1.49**

**FRUIT NAPPIES**  
Clear glass with footed base. Reg. 20c ea. Special **8 for 1.49**

**COFFEE MUGS**  
Deep Tone Stripes on cream colored background. Double handles. Reg. 49c ea. Special **5 for 1.49**

**BONE-CHINA CUPS & SAUCERS**  
Countess Shape by Royal Albert. Assorted Floral Designs. Reg. 1.98. Special **1.49**

**WISHING SPOONS**  
1847 Rogers Silverplate Coffee Size in sets of 4-1 spoon each in "Flair", Orleans, Lilliane and Reflections. Reg. 2.00 box, Special, box **1.49**

**BONE CHINA SALTS AND PEPPERS**  
Dainty Floral Decorations. Reg. 2.29 pr. Special, pair **1.49**

**DESSERT PLATES**  
Choice of 4 Pastel Borders with Floral Centres. Square Shape. Reg. 75c ea. Special **3 for 1.49**

**COLORED GLASS AND TRAYS**  
Amber or green in color. Heavy base. Reg. 98c ea. Special **2 for 1.49**

**COMPORTS**  
Floral designs on Footed Base. Imported China. Reg. 98c. Special **2 for 1.49**

## STATIONERY

**CAMPUS REFILLS**  
3 Hole Type to fit Standard Binders - 5 books of 40 pages ea. Reg. 59c ea. Special **3 for 1.49**

**ESTERBROOK FOUNTAIN PENS**  
Convertible to be used with either Ink Bottle or Cartridge. Renewable point. Reg. 1.95. Special **1.49**

**PLAYING CARDS**  
Single pack. Reg. 79c ea. Special **2 for 1.49**

**HOT WATER BOTTLES**  
Heavy quality rubber. Guaranteed 3 yrs. Reg. 1.98. Special **1.49**

**"VIOLET" BRAND YARN**  
10 oz. balls in a 3 ply blend of wool and nylons. Shrink resistant. Wide range of colors. Reg. 39c ea. Special **5 for 1.49**

**KLEENEX**  
400 pack single tissue. Reg. 36c. Special **5 for 1.49**

**4 PIECE PLACE MAT SETS**  
Handwoven in assorted colors. Reg. 96c. Special **2 for 1.49**

**"TONI" REFILLS**  
Choice of Super, Regular or Gentle. Reg. 2.00 ea. Special **1.49**

**GARMENT BAGS**  
Jumbo size in heavy gauge plastic, strong zipper closing. Ass't. colors. Reg. 1.98. Special **1.49**

**SHOE BAGS**  
Holds up to 6 pairs shoes. Made of durable quilted plastic in assorted colors. Reg. 1.98. Special **1.49**

**LADIES' PLASTIC DRESS COVERS**  
Set of 10 per package. Assorted colored bindings. Reg. 96c. Special **2 for 1.49**

**PURSE SIZE COLOGNE**  
Famous French Imports in a Spill-proof Purse size bottle. Reg. 1.00 ea. Special **2 for 1.49**

## TRAVEL BAGS

Extra heavy duty vinyl, full length rust proof zipper, metal hanger slot for added strength. For travel or home storage. Assorted colors. Reg. 1.98. Special **1.49**

**SHOWER CAPS**  
Bouffant style with elastic band. Reg. 1.79. Special **1.49**

## HOME FURNISHINGS

**COTTON TERRY BATH TOWELS**  
Thick high pile