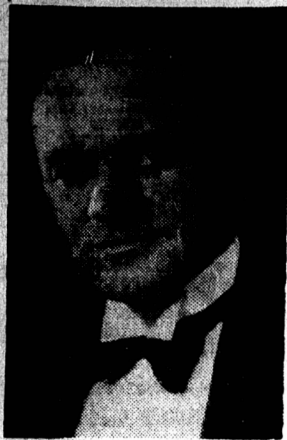


Musical Festival Association

HON. PRESIDENT



DR. L. W. SHAW

Deputy Minister and Director of Education

In the Constitution of the Prince Edward Island Musical Festival Association we read, "This Organization is to be known as the Prince Edward Island Musical Festival Association. Its object is to hold an annual Musical Festival with the purpose of discovering talent and increasing an interest in music."

I think all will subscribe to the statement that the object of the Association is a worthy one. Those who have followed the activities since its inception will agree, too, that rather remarkable progress has been made in working towards the objective mentioned and ever increasing numbers of schools and communities are taking an interest and are participating. To those who initiated the movement, this is most encouraging. We must, of course, keep in mind that like any other project of a social nature, the Festival must grow or die. It cannot stand still.

The Royal Commission on the Arts, Letters and Sciences showed a keen interest in what is being done in this province to enrich community life. One could not but note their admiration for the community, whether large or small, seeking to develop its own resources in recreation. Surely this is what is being done through the Musical Festival. Let us all support and encourage the Association and its work in every way we can.

L. W. SHAW
Deputy Minister and Director of Education

Music is well said to be the speech of Angels. — Sir Walter Scott.

Programme

The 1950 Festival Programme is expected to be the largest and most varied in our Festival's short history. As in previous years an endeavour will be made to arrange the performance of the various classes at times most suitable to the contestants. The classes for adult groups and individuals will be placed in the evening sessions while the younger participants will perform in the mornings and afternoons.

Plans have been made for two adjudicators this year, and if the number of entries warrant it, two halls will be used for some sessions. Two adjudicators and two halls will make possible longer adjudication and shorter sessions than last year.

The order of the performance of contestants in each class will be decided by ballot. All sessions will begin promptly at time stated, so please co-operate by being punctual. Concerts of first prize winners will be arranged for Friday and Saturday evenings, at which times the scholarships will be awarded also. Programmes will be on sale a week previous to the Festival.

We wish to thank all those adjudicators who so liberally support our Programme each year.
PRESTON BECK
Convener

Refresher Course

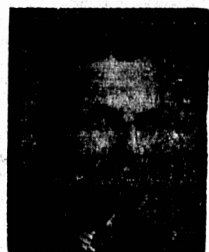
The policy of the Refresher Course of the Musical Festival Association, has been changed somewhat. In 1948 and 1949 a Refresher Course in Festival Music was arranged at Charlottetown, open to all persons interested in teaching music in rural areas, but the attendance did not warrant the amount of labour and expense entailed. This year it was thought that individual instructions might be of greater value to those same persons, and should eventually prove a material aid, to what is now a crying need, for more music teachers in schools throughout the province. A notice to this effect was published in the local papers, with the result that a number of musicians, who are now teaching music in rural schools, are receiving further instruction in Charlottetown. Some with a view to qualifying for the special Music Teacher's license now being issued by the Department of Education. Those availing themselves of this privilege are from the Eastern part of the Province. There is no date limit to this offer. Inquiries would be welcomed and should be directed to convener of Refresher Course.

MRS. V. M. HUDSON,
Parkdale.

THE ADJUDICATORS

FILMERE E. HUBBLE, A.C.C.O.

Halls from Winnipeg, is an examiner and lecturer for the University of Manitoba, organist and choirmaster at St. Stephen's Broadway United Church. In addition, he is conductor of the University of Manitoba Symphony Orchestra, the Manitoba Schools Orchestra, the Young Women's Music Club Choir. His music adjudication activities have taken him from coast to coast in Canada and to several centres in the U.S.A.



JOHN LEE, F.R.C.O., L.R.A.M., L.T.C.L. (London). Members Royal Society of Teachers

Educated and well known in England as teacher, lecturer, choral conductor, composer, organ recitalist and adjudicator. After five years service in the R. A.F. he and his family came to Canada in 1946 and joined the faculty of St. Francis Xavier University, Antigonish, as Professor and Director of Music; he is also the organist of St. Ninian's Cathedral. He is Chairman of the Advisory Committee on Music to the Adult Division of the Nova Scotia Dept. of Education.

Field Committee

The Field Committee exists for the purpose of giving information and assistance to all desiring to promote instruction in Music and participation in the Festival. We strive to encourage the organization of Community Choral Groups, School Choruses, etc., as well as the development of individual talent. We hope that in the near future the majority of our schools will have regular instruction in Music by fully qualified teachers. The action of the Provincial Government in passing legislation whereby they now pay competent music teachers in the schools on the same basis as the regular school teachers, is a great step forward musically for our Province. It is now possible for several schools in a vicinity to co-operate in hiring a music teacher simply by paying their supplement.

We are interested in soliciting entries in all classes in the syllabus, especially the new classes added for this year's Festival, and those in which there have been no entries in previous years, such as orchestras, rural church choirs, wind instruments, and bands. Last year we did have one band entry but we hope for more this year.

In comparing the entries in the Festivals from 1946 to 1949, we are gratified to notice a steady increase of over two hundred each year, and we confidently look for-

ward to the same splendid increase in 1950.

If the Field Committee can assist you in any way, please contact us at any time. The members and their addresses are as follows:—

- Mrs. Blair Andrews, New Glasgow Mills, Convent.
- Mrs. Brent Wood, Crapaud.
- Mrs. Waldo Bain, Cornwall.
- Mrs. D. M. Worth, Pownal.
- Mrs. Harold Woodside, Margate.
- Mrs. A. B. McAdam, Morell.
- Mrs. J. L. B. Anderson, Mt. Stewart.
- Mrs. Julian Herring, Charlottetown.
- Miss Louise Callbeck, Kensington.
- Mrs. (Rev.) A. S. Weir, Vernon Bridge.
- Miss Florence Mabey, Tryon.

IMPROVEMENT IN MUSIC STANDARD

Those who have attended the Musical Festival here since its beginning are deeply impressed by the marked improvement each year in the performance of the entrants. The standard of music in Prince Edward Island has definitely been raised, and much talent, which otherwise might never be revealed, is being encouraged and developed.

From year to year the entry list grows, but, as Vice President for Prince County, I should like to see greater participation in the Festival from centres west of Summerside. I would urge all music lovers

Government Aid

The Prince Edward Island Musical Festival Association, along with its sister organizations — the Drama Festival Association and the Arts and Crafts Guild, is assisted in its work through annual grants provided by the Provincial Government. This additional revenue enables the Association, through its Percentage Allotment Committee, to assist rural districts in providing instruction in music in their schools. Since encouragement by way of financial aid has been offered, there has been each year an increase in the number of districts which have provided musical training for the children in their schools. The Provincial Government is, therefore, to be commended for its foresight and generosity in fostering a most worthy and beneficial enterprise.

As a result of legislation passed at the 1949 session of the Legislative Assembly, it is now possible for the Department of Education to grant special licenses to persons with suitable qualifications in music and to pay them salaries commensurate with the time they devote to classroom instruction. Already several school circuits have been organized in the province and other groups of districts are planning organization for the forthcoming school year.

The rebirth of an interest in music is heartening, indeed, and it is encouraging to note that music is becoming more and more a part of the education of the children of the province. It is impossible to estimate fully its effects in the training of young people. That music has a definite, educative value has been recognized by great statesmen and writers from the time of Plato onward. It was Plato who said: "Musical training is a more potent instrument than any other, because rhythm and harmony find their way into the secret places of the soul on which they mightily fasten, imparting grace and making the soul graceful, of him who is rightly educated." And in our own day the late Franklin D. Roosevelt observed: "Music, because of its ennobling influences, should be encouraged as a controlling force in the lives of men."

M. MacKENZIE
Department of Education

throughout the County to work out some means by which more schools, groups and individuals may enter and attend as many sessions as possible.

The Musical Festival Association gives every person on Prince Edward Island the privilege of participating in this great "feast of music" and becoming a part of this movement for better music in our province.

MRS. CREELMAN MACARTHUR
Vice-President, (Prince).

SECRETARY



MRS. EDWIN COOK

As Secretary of the P. E. I. Musical Festival Association and therefore the person to whom your entry or entries to the Festival will be sent, I would like, with your cooperation, to be able to turn over to our Program Committee a list prepared with as few errors as possible. To help in this would all entrants check the following:

That the Class number and Test Piece correspond.

That you are entering the correct class for your age (where are limit is set.)

That you have enclosed your entry fee.

That in classes where test piece is "Own Selection" you have given the name and composer of the piece selected. An extra copy of such piece must be forwarded to me before the Festival, for the use of the Adjudicator.

That in all classes with A and B test pieces, both pieces be listed on entry form and both are to be performed.

That in the case of duets, both names be listed on the one entry form or that two forms be fastened securely together.

In short, by reading carefully the rules and regulations on pages two and three of the Syllabus before completing your entry form, I feel sure unnecessary mistakes can be avoided and you will be assisting in no small way towards a well organized and successful Festival.

To all competitors I wish you sincerely the reward your efforts so well deserve.

MARY F. COOK
Secretary
Parkdale.

Scholarship

The Scholarship Committee is pleased to report thirty-one contributors to the Scholarship Fund for the 1950 Musical Festival. These public spirited individuals and organizations who contribute each year to this Fund merit the praise and thanks of all Musical Festival supporters and contestants. The monetary prizes add greatly to the success of the Festival and the committee trusts will be used by the students in further pursuit of their musical studies.

The Women's Institute Shield awarded each year to the chorus of three, two or one room schools was won last year by Marshfield School, and is again up for competition.

The Gyo Shield, awarded each year to the school attaining the highest average, and won last year by Prince Street School is also on the list.

The Committee has allotted scholarships this year for three classes in Sight Singing, and also for three classes in Composition.

First — Composition (by an amateur).

Second — Composition (by a professional).

Third — Composition (to be performed).

It is hoped that these classes will prove popular.

There is a special prize of twenty-five dollars donated by Parkdale Institute to the school from group three, two or one room schools which attains highest standing in their first year of competition.

Since the Syllabus was printed a twenty-five dollar scholarship has been received from Central Creameries Ltd., Charlottetown, for which the Committee expresses thanks.

MRS. WALTER JONES
Convener

SYLLABUS

The Festival Syllabus has thirteen new classes this year, many of these are enlargements and adjustments of previous classes. Definitely new are the composition classes, Bagpipe and Band classes. A Rural Male Quartette is expected to create much interest. We are happy to have in the Syllabus a song composed by one of our own "Island" musicians, Walter MacNutt, son of Major and Mrs. T. E. MacNutt; also William Rogers, son of Col. and Mrs. Keith Rogers is represented by two songs. Professor Harold Hamer has ably and satisfactorily selected the music for our Syllabus for the past two years. It is considered wise to change our adjudicator frequently, so, in line with this policy it is probable Mr. David Ouchterlony will be asked

PRESIDENT



LT.-COL. L. T. LOWTHER, O.B.E.

Once again the Prince Edward Island Musical Festival Association offers to all musical students and music lovers generally, the joy of a full week of festive competition. We feel that, in a world so full of discord and fear, the "concert of sweet sounds" of our Festival will help to bring a measure of peace and quiet. Oh, that all could learn this universal language! Would that through the power of music, world harmony could be restored, and wars and rumors of wars banished! Surely such a goal is more than worth the effort this venture exacts, and surely those efforts are worth supporting!

We appeal to all troubled hearts in all the unquiet breasts in this modern age of scientific progress to turn again to Music, the Language of Heaven, and to seek in its solace renewed faith and hope in mankind's destiny. Help us in our efforts to ensure the study of music in all our schools so that everyone may acquire enough knowledge of this truly universal language to appreciate, and in some measure, understand the message of the great masters. No barriers of race, colour, creed or political dogma can divide music lovers. Let us all learn to live together in our "one world," and let music help to unite us.

Support the Prince Edward Island Musical Festival!

L. T. LOWTHER
President

to select next year's test pieces.

The attention of twelve year old piano contestants is directed to the fact that in Class 81, an alternative piece has been selected, "Squirrels at Play" by Bons Berlin, will be accepted as well as "Hungarian Dance" by Arnold Schoenberg listed in the Syllabus.

MRS. J. F. LANTZ
Convener



A few can touch the magic string,
And noisy fame is proud to win them.
Alas for those that never sing
But die with all their music in them.

—Oliver Wendell Holmes.



Prince Edward Island Musical Festival Association The Musical Festival

WILL BE HELD

May 1st, 2nd, 3rd, 4th, 5th and 6th

Entries Close March 15th

This Is Your Festival --- Get Your Entries In Now And Enjoy By Participating

If You Are Not A Member Of The Association Join Now

This advertisement is generously sponsored by:

DUBLOIS BROS.

PURE MILK CO. LTD.

HENDERSON & CUDMORE

LEPAGE SHOE CO. LTD.

Constitution
Of P. E. I. Musical Festival Association

This Organization is to be known as the Prince Edward Island Musical Festival Association. Its object is to hold an Annual Musical Festival with the purpose of discovering talent and increasing an interest in music.

The officers of the Association shall be: Honorary President, President, Vice-President (one from each County), Secretary, Treasurer and two auditors. These officers shall be chosen annually by the Association from paid up members of the Association and shall continue in office until a successor has been elected.

Membership In Association

The fee for Life Members is \$25.00, for group membership \$5.00, and for individual members \$1.00 a year. All memberships are due one year from the date you join. By joining as a group you have the privilege of naming five representatives from your organization to attend and vote at the Annual Meeting in June and all general meetings held throughout the year. All applications for membership received up until March 31st will be printed in the 1950 Festival Programme.