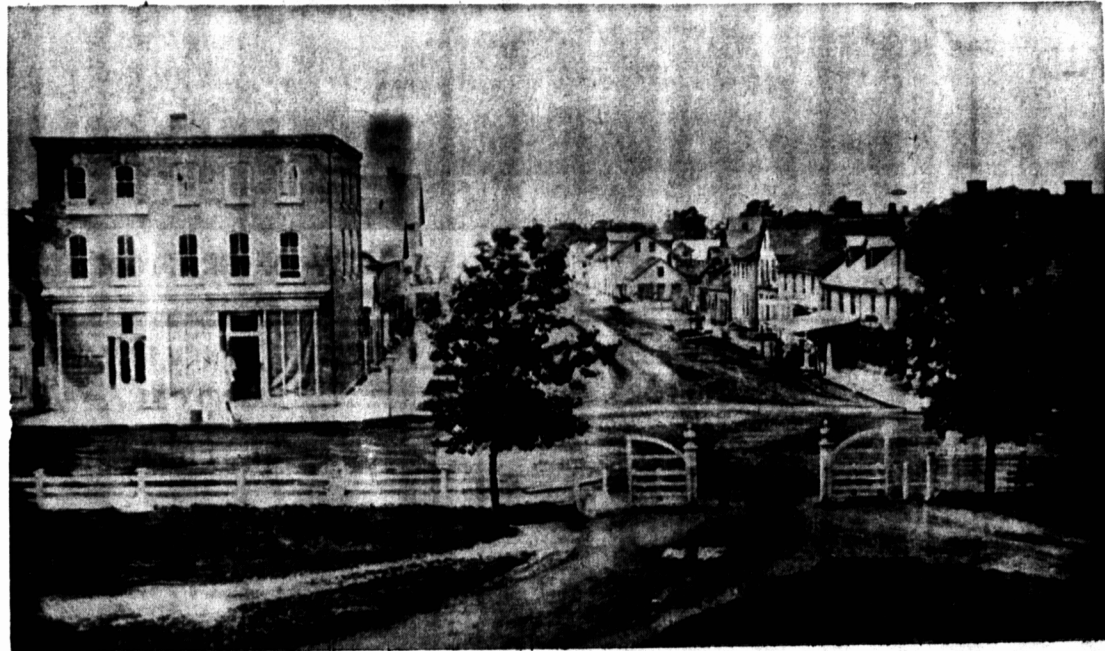


OVER A CENTURY OF PROGRESS AND SERVICE CHARLOTTETOWN BUSINESS REVIEW 1810 - 1957

GREAT
GEORGE
STREET
LOOKING
NORTH
1865



SERVING PRINCE EDWARD
ISLAND FOR
76 YEARS
PROWSE BROS. Ltd.
FOUNDED
1881

SERVING PRINCE EDWARD
ISLAND FOR
74 YEARS
Johnson & Johnson
DRUGS
FOUNDED
1883

SERVING PRINCE EDWARD
ISLAND FOR
70 YEARS AND OVER
**REDDIN BROS.
PHARMACY**

SERVING PRINCE EDWARD
ISLAND FOR
67 YEARS
**BRUCE STEWART
& CO. LTD.**
FOUNDED
1890

SERVING PRINCE EDWARD
ISLAND FOR
65 YEARS
**MOORE & McLEOD
LTD.**
FOUNDED
1892

SERVING PRINCE EDWARD
ISLAND FOR
65 YEARS
CARTER & CO.
WHOLESALE
FOUNDED
1892

SERVING PRINCE EDWARD
ISLAND FOR
61 YEARS
**M. F. SCHURMAN
CO. LTD.**
FOUNDED
1896

SERVING PRINCE EDWARD
ISLAND FOR OVER
60 YEARS
S. A. McDONALD
DEPARTMENTAL STORE

SERVING PRINCE EDWARD
ISLAND FOR
60 YEARS
STERNS LTD.
LAUNDRY
FOUNDED
1897

SERVING PRINCE EDWARD
ISLAND FOR
58 YEARS
JAMES TAIT
FLORISTS
MEMBER OF FLORISTS TELEGRAPH
DELIVERY ASSOCIATION
FOUNDED
1899

SERVING PRINCE EDWARD
ISLAND FOR
57 YEARS
**IRWIN PRINTING
CO. LTD.**
QUALITY PRINTING FOR 57 YEARS
FOUNDED
1900

SERVING PRINCE EDWARD
ISLAND FOR
57 YEARS
**A. PICKARD & CO.
LTD.**
FOUNDED
1900

SERVING PRINCE EDWARD
ISLAND FOR
57 YEARS
**R. E. MUTCH
& CO. LTD.**
WHOLESALE
FOUNDED
1900

SERVING PRINCE EDWARD
ISLAND FOR
54 YEARS
**MUTUAL LIFE
OF CANADA**
CANADA'S FIRST AND LARGEST MUTUAL
LIFE CO.
J. ERIC SHEPARD, CHARTERED MANAGER
1903

SERVING PRINCE EDWARD
ISLAND FOR
50 YEARS
**MARTIN - WEBSTER
AGENCY**
EST. J. A. WEBSTER & CO.
1907

SERVING PRINCE EDWARD
ISLAND FOR
50 YEARS
**PATTERSON'S
JEWELLERY STORE**
FOUNDED
1907

SERVING PRINCE EDWARD
ISLAND FOR
46 YEARS
**MacDONALD - ROWE
Woodworking Co. Ltd.**
FOUNDED
1911

SERVING PRINCE EDWARD
ISLAND FOR
43 YEARS
Henderson & Cudmore
MEN'S CLOTHING
FOUNDED
1914

SERVING PRINCE EDWARD
ISLAND FOR
42 YEARS
DeBLOIS BROS. LTD.
WHOLESALE
FOUNDED
1915

SERVING PRINCE EDWARD
ISLAND FOR
41 YEARS
**CUDMORE'S
DRY CLEANERS**
FOUNDED
1916

SERVING PRINCE EDWARD
ISLAND FOR
38 YEARS
**SCANTLEBURY
SIGNS & PLASTICS**
FOUNDED
1919

SERVING PRINCE EDWARD
ISLAND FOR
37 YEARS
**WHITLOCK'S
TIRE SERVICE**
FOUNDED
1920

SERVING PRINCE EDWARD
ISLAND FOR
37 YEARS
**LePAGE
SHOE CO. LTD.**
FOUNDED
1920

SERVING PRINCE EDWARD
ISLAND FOR
36 YEARS
**PALMER ELECTRIC
LTD.**
FOUNDED
1921