

Traffic Routes Are Tunneled Deep Below Moscow Surface

By ANTHONY WHITE
 MOSCOW (AP) — Moscow, growing daily as tall new apartment blocks climb skyward, is spreading out deep below the ground, too.
 Under the city, new Metro routes are being tunneled, extending the capital's vaunted subway into the heart of its present fabric.

Some of the also small scale compared with the metros in Paris, New York or London. But Moscow's boast is the best. It is certainly the fastest, and maybe the cleanest. And it's cheap—five kopeks (about six cents).
 Stalin created the Moscow Metro to prove that the Soviet Union could always go one better than the West, he built stations like gleaming palaces, splashed the walls with murals and frescoes and hung crystal chandeliers from ceilings some- times made of marble or semi-precious stones.
 The new lines are badly needed. The crush-hour in the Moscow subway is as bad as anywhere in the world.
 The 200 miles of Moscow's subway—125 miles of double track—cover mostly only the centre and rim of the city proper.
 25 NEW MILES
 Engineers now are working on 25 miles of new radial lines connecting the centre with the

expanding new residential areas sprawling up almost overnight beyond the city boundaries.
 City officials claim Moscow a Metro carries 3,500,000 people on an average day—more than half the population of the city.
 But while anxious to quote statistics about the efficiency of the subway, the frequency of its trains—one every 90 seconds—and the speed of the new tunnel-building, civic officials skate around others.
 For instance: What is the cost of building a mile of Metro?
 They refuse to give figures. How deep do the lines run? "It varies," they will tell you. Reluctance to answer this question could spring from security considerations, since always made good air raid shelter.
 GIDD FIGURES
 Other statistics sound odd. Vasily Polezhaev, chief of the Moscow subway, notes that "during the operation of the automatic system on exper-

mental trains, only one and a half trains have been late."
 What happened to the other half-train could not be clarified. Subway engineers apparently still are not completely satisfied with automatically operated trains, since they have been used experimentally for about four years now. A driver still sits in the cab, just to make sure the automatic pilot continues to function.
 The new stations going up—like those of recent years—will be plain and functional, with wide use of glass and plastics. In underground Moscow, the days of the palace is past.

Jacques Esterel, already known for his fashion gimmicks.
 To model the breast, made of white milk and worn on the back of the head, he ordered one of his beautiful, blonde models to shave her head smooth as an egg.
 The shaving was done by exclusive hairdresser ALFREDO.
 BARRIER FOR LIFE
 Australia's Great Barrier Reef contains the widest variety of marine life found in the world.

Beret Model Is Bald Girl

PARIS (Reuters)—Paris fashion week opens with a bombshell today: a bald girl will model a beret.
 The courtier launching this innovation is gular - playing

Tourist Information Guide

FOR THE BEST IN MEALS BE SURE AND CALL AT MORELL DINER and try the finest foods that will satisfy your appetite. MORELL DINER Carl MacAdam, Prop.

Take the work out of Camping visit our Delicatessen Specials Every week Enterprise Bakery 263 Grafton St. DIAL 4-8747

WE RENT Televisions, Fridges, Washers, Stoves WE SELL Toys, Furniture, Tires and all Appliances large and small. FIRESTONE HOME & AUTO Co. Ltd. Ch'town - Next door to King Keln Laundry

Summer Cottons sizes 7 - 24 1/2 The Gloria Ladies' Wear 135 St. George St.

Regular Dances ROLLAWAY CLUB CHARLOTTETOWN Mon., Wed., Fri. and Sat. Music by "The Hi-Notes" 9:30 - 12:30 Tues. and Thurs. Record Hops 9:30 - 12:30 Also Regular Bingo Mon., Wed., Fri., Sat. 7:30 Casual Bowling Mon. to Sat. "Automatic Pin Sellers".

WOOLWORTH'S ONE STOP Gift Centre Lunch Counter Opens daily from 8 a.m. for Breakfast. Bakery Counter All Goods Baked Fresh Daily in our own Kitchens. Your Money Buys More at Woolworths.

Racing Every Monday, Thursday and Saturday Nights at 7.45 Plan to Attend Old Home Week Aug. 17 To 22 The Charlottetown Driving Park and Provincial Exhibition Association

George Agnew SEAFOODS Wholesale - Retail ● live and cooked — ● lobsters, clams ● oysters, quahaugs We Cater to Banquets 85 Prince St. Dial 892-2270

FILMS All Types ● Souvenirs ● Toiletries — most all makes ● Bathing Caps ● Swim goggles and fins PRESCRIPTIONS PROMPTLY FILLED Dial 3237 FOLEY'S DRUG STORE 309 Water St. S'ide

BAY VISTA MOTOR INN Route 6 (One Mile West Cavendish National Park) Licensed Dining Room and Lounge Dancing July and August Friday and Saturday nights. Catering to private parties, banquets, weddings, etc. Coin Operated Laundromat

NORTH RIVER DRIVE-IN Theatre Movies Rain or Shine Try Our Snack Bar 3 miles from Ch'town on the Trans-Canada Highway to Sorden.

McINNIS PHOTO and HOBBY SUPPLY Kent St. Mr. Tourist Silver Waters Motor Lodge Offers: ● 16 units heated ● Showers ● Playground Route I-A 2 miles east of S'ide

WM. CONDON and SONS 65 Queen St. Dial 4-8712 Charlottetown Glover's Deep Sea Fishing Savage Harbour Two Trips Daily 8 a.m. and 2 p.m. Reasonable Rates Phone Mr. Stewart 1-8 THYMESOP P. E. I. "For the best in handicrafts from the four Atlantic Provinces".

DEURY LANE STEAK HOUSE Aulis, N.B. A must on your trip. Straight across No. 2 Highway at P.E.I. and N.B. Tourist Bureau at the entrance of Fort Beauséjour.

GOLF AT GREEN GABLES Cavendish Equipment for Rent at Pro Shop. Take the opportunity to play one of Canada's finest courses.

S. R. Johnston Ltd. Picnic & Camping Needs Large amounts sold at wholesale prices to hotel, motel, resort operators. FREE Tumblers Free P. E. I. Centennial Tumbler. This is a high quality giveaway with each \$4.00 purchase of gasoline. Agents for Tilden Rent a Car Service

Charlottetown's Most Up To Date RESTAURANT 151 Kent St. Phone 4-7635 Milton's Old Spain For the Best Shows on P. E. I. visit STAR-LITE DRIVE-IN 2 miles east of Summerside

ONCE Your Picnic Needs MacLEAN'S GROCERY Winsloe, P. E. I. RIVER VIEW ESSO SERVICE 15 Miles from Berden CRAPAUD, P.E.I. BEFORE the wool comes to Condon's Woolen Mill AFTER It has been to Condon's Woolen Mill Visitors Welcome ● Yarns ● Blankets ● Auto Ropes ● Island Tartan Blankets Made of 100% Virgin Wool

W.M. CONDON and SONS 65 Queen St. Dial 4-8712 Charlottetown Glover's Deep Sea Fishing Savage Harbour Two Trips Daily 8 a.m. and 2 p.m. Reasonable Rates Phone Mr. Stewart 1-8 THYMESOP P. E. I. "For the best in handicrafts from the four Atlantic Provinces".

THE RANCH HOUSE Gift Shop Stationery, P.E.I., Handicrafts, Souvenirs, Gifts, Confections, Cigs, etc. OPEN DAILY 10 a.m. to 10 p.m.

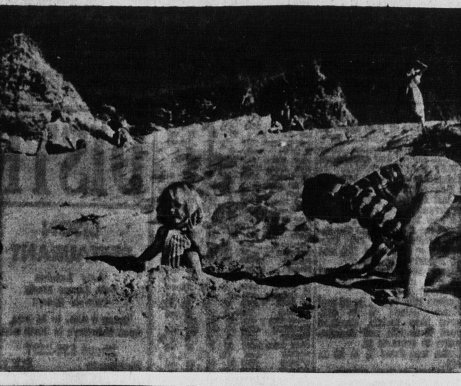
FOR YOUR VACATION NEEDS Jantzen Swim Trunks Sportswear, etc. See

J. & S. Store Ltd. infants to teens specialty store ● authentic viyella tartans ● other exclusive lines for children & teens. Water Street Summerside

ISLAND FLYING SERVICE PHONE 892-2711 BELL'S BOOK & NOVELTY STORE Souvenirs, English Bone China, Greeting Cards, Stationery, Books, Magazines, etc. 14 Summer St. Summerside

WELCOME TOURISTS Your Bank or business efficient service is the Bank of Montreal with two offices to serve you. Main Branch - 105-7 Grafton St. Charlottetown, across the street from Confederation Centre Theatre. Parkdale, P. E. I. - Corner St. Peters Road and Palmer's Lane on Route 2 where ample parking is always available.

FASHIONS ARE TO PLAY IN The latest styles of Swim Suits, Shorts and Slacks are found at— The Misses HOLMES & BRADLEY Queen Street Charlottetown ● souvenirs ● gifts ● novelties, etc. "GIFTARAMA" The Island's Largest Gift House Opposite Guardian - Patriot, Prince St. Ch'town



Moore & McLeod Ltd. LADIES WEAR MEN'S WEAR CHILDREN'S WEAR HOUSE FURNISHINGS TARTANS SOUVENIRS 119 QUEEN ST. CHARLOTTETOWN

IF IT'S FISH, AND CAN BE CAUGHT — "WE HAVE IT" Queen St. Meat Market 222 Queen St. Dial 4-7236 Free Delivery

HARNESS RACING Racing Every Wednesday Summerside Racing Assn. Clinton Heights MOTOR HOTEL 8 miles from Cavendish on route 6 ● Deluxe Units ● Licensed Dining Room & Lounge ● TV and Phone For Reservations Phone New London 36

DRIVE IN Theatre Brackley Point Road Route 15 Show Nightly at Dusk Snack Bar on Grounds

BUYING FURNITURE for the FOLKS AT HOME? see Archer & MacDonald Ltd. Open 'til 9 every night Parkdale Dial 4-6345

Shore Acres Motel 1 1/2 Miles from Cornwall on Route 15 7 miles from Ch'town Spacious Dining Room OPEN DAILY Luncheon 12 - 2 p.m. Dinner 5:30 - 8:30 Catering to Banquets and Wedding Receptions. Luxurious accommodations for guests. 20 units with private bath. Dial 894-7653

The Real TASTE TREAT ● Take time out for a delicious shake, sundae or cone. From our brazier try hamburgs, hot dogs, Fishcakes. Conveniently Located on Elm Ave. Sun Tan CREAMS LOTIONS See these dependable druggists for complete prescription service and all your vacation needs. Reddin Bros. 132 Richmond St. Jenkin's Pharmacy Gt. George St. Sample's Pharmacy 178 Queen St.

Campers' Supplies Buying or Renting RENT-A-TENT 46 St. Peter's Road (Route No. 2 to the beaches) Ch'town 892-2358

Shore Acres Motel 1 1/2 Miles from Cornwall on Route 15 7 miles from Ch'town Spacious Dining Room OPEN DAILY Luncheon 12 - 2 p.m. Dinner 5:30 - 8:30 Catering to Banquets and Wedding Receptions. Luxurious accommodations for guests. 20 units with private bath. Dial 894-7653

DRIVE IN Theatre Brackley Point Road Route 15 Show Nightly at Dusk Snack Bar on Grounds

"Country Garden" Rte. 25 York, P.E.I. NEAR STANHOPE ● Illuminated water fountain ● Lily Pond ● Curiously House ● Queen's Crown ● Gift Shop Open daily except Sundays "something different to see"

Woodleigh Replicas A Glimpse of Britain in P. E. I. Located at Burlington near Kennington. Open Daily Except Sundays

● Books ● Cards ● Stationery ● Souvenirs CARD SHOP Grafton St. City

ADELLA'S Granite HATS for now and Fall 177 Grafton St. Ch'town

Kennedy's - - - ladies' fashions of distinction One sixty-six Queen Charlottetown

TARTAN SKIRTS AND STRIDES P.E.I. and N.S. Tartan ● Bulky Sweaters ● Mohairs, wools THE FASHION SHOPPE Open All Day Saturday 141 Gt. George St. Charlottetown

THE B. & J. COFFEE SHOP Candlelight Room TASTY FOOD, PROPERLY SERVED IN PLEASANT SURROUNDINGS ALBERTON P.E.I.

CHINESE FOOD ● Snack Bar Service ● Full Course Meals ● Take Out Orders Situated up-town ISLAND GRILL Queen St. Ch'town

TOURISTS For Your Groceries, Fruits and Vegetables S. N. KAYS 87 Pownal St. Ch'town

Zenith Park Motel On TCE just inside Centennial Arch on way from Sorden Housekeeping and overnight accommodation at reasonable rates Dial 4-8506 and place your message before thousands of tourists.

PARKDALE PHARMACY open daily 'til 10 p.m. St. Peters Road Parkdale

A "MUST" - - - a visit to STRATHGARTNEY HOMESTEAD Campers' Supply Store, Gifts, Novelties A prominent old homestead dating back to 1846 complete with much of its original furniture! On Route 1 adjacent Strathgartney Park Scenic Beauty - Fishing Guided Tours We're famous for British Woollen Sweaters ● Furs ● Sportswear island furriers ltd. "The Ultimate in Fashion" 79 GRAFTON ST. Dial 2-1273