

ON THE AIR

FRIDAY PROGRAMS

CFCY-TV

10.30 a.m.—Farm Business
11.30 a.m.—Sign Off
12.00 p.m.—Musical
2.00 p.m.—Film Festival
3.00 p.m.—Moment of Truth
3.30 p.m.—Take Thirty
4.00 p.m.—As the World Turns
4.31 p.m.—Rattle Dazzle
5.00 p.m.—The Kings Outlaw
5.30 p.m.—Music Map
6.00 p.m.—Fintstones
6.30 p.m.—Gazette
6.55 p.m.—N.S. Legislative Report
7.00 p.m.—CFCY TV News
7.15 p.m.—Purity Photo Quiz
7.20 p.m.—Interview
Anglican Church Women
7.30 p.m.—Timmy's Easter Seal Show
8.00 p.m.—Jane Wymen Show
9.00 p.m.—Country Headlines
9.30 p.m.—The Fugitive
10.30 p.m.—Telescope
11.00 p.m.—Big Time Wrestling
12.00 a.m.—CFCY TV News
12.15 a.m.—Local Weather and Sport Scores
12.14 a.m.—Sign Off

CKCW-TV

9.57 p.m.—Station Sign On
10.00 a.m.—Canadian Schools
10.30 a.m.—Our Farm Business
11.30 a.m.—Across Canada
12.00 p.m.—Friendly Giant
12.15 p.m.—Chez Helene
12.30 p.m.—Butterfly Square
12.50 p.m.—CBC TV News
1.00 p.m.—Friday Playbill
Pulpita Gang
2.30 p.m.—At Home With Helen Crocker
3.00 p.m.—Moment of Truth
3.30 p.m.—Take Thirty
4.00 p.m.—As the World Turns
4.30 p.m.—Rattle Dazzle
5.00 p.m.—Cartoon Capers
5.30 p.m.—Music Map
6.00 p.m.—Supper Club
6.15 p.m.—Lionel Television News
6.25 p.m.—Weather
6.30 p.m.—Today's Editorial—CBC
6.35 p.m.—Supper Club
7.00 p.m.—Wagon Train
8.00 p.m.—Take A Chance
9.00 p.m.—Country Headlines
9.30 p.m.—The Fugitive
10.30 p.m.—Telescope
11.00 p.m.—The Untouchables
12.00 p.m.—CBC TV News
12.15 a.m.—Midnight
12.20 a.m.—Lionel Network News
12.25 a.m.—Midnight Theatre
Man on a Tightrope

SATURDAY PROGRAMS

CFCY-TV

2.30 p.m.—Musical
3.00 p.m.—World of Sport
Oxford-Cambridge Boat Race
4.00 p.m.—World of Sport
TBA
8.00 p.m.—Jane Wymen
8.30 p.m.—Bugs Bunny
9.00 p.m.—Dr. Who
9.30 p.m.—Country Time
10.00 p.m.—CFCY TV News
10.30 p.m.—Fisherman's Log
11.00 p.m.—Let's Sing Out
11.30 p.m.—Beverly Hillsbillies
12.00 p.m.—Wagon Train
12.30 p.m.—NHL Semi Finals
Toronto vs Montreal
11.15 a.m.—Juliette
11.45 a.m.—Sports Unlimited
12.00 p.m.—CBC TV News
12.05 a.m.—Local Weather and Sport Scores
12.10 a.m.—Route 66

CKCW-TV

12.25 p.m.—Station Sign On
12.30 p.m.—Special Programme on Education
1.00 p.m.—Cartoon Capers
2.00 p.m.—Top Ten Plus
3.00 p.m.—CBC Sports
Oxford-Cambridge Boat Race
4.00 p.m.—CBC Sports
TBA
5.00 p.m.—Down Memory Lane
5.30 p.m.—Bugs Bunny
6.00 p.m.—Forest Rangers
6.30 p.m.—Television News, Weather and Sports
6.45 p.m.—London Line
7.00 p.m.—Male Event
7.30 p.m.—My Favourite Martian
8.00 p.m.—Beverly Hillsbillies
8.30 p.m.—Let's Sing Out
9.00 p.m.—Sashunt
9.30 p.m.—NHL Semi Finals
Toronto vs Montreal
11.15 p.m.—Juliette
11.45 p.m.—TBA
12.00 p.m.—CBC TV News
12.10 a.m.—Lionel Television News
12.15 a.m.—The Late Show
Four Separate Men

SUNDAY PROGRAMS

CFCY-TV

1.00 p.m.—Musical
1.30 p.m.—Country Calendar
2.00 p.m.—Tom Swill Show
2.30 p.m.—David Nixon Show
3.00 p.m.—French For Love
3.30 p.m.—Valiant Years
4.00 p.m.—Heritage
4.30 p.m.—TBA
5.00 p.m.—Timmy's Easter Parade of Stars
6.00 p.m.—Show on Shows
6.30 p.m.—Time of Your Life
7.00 p.m.—All Star Theatre
7.30 p.m.—Piccadilly
8.00 p.m.—Patty Duke Show
8.30 p.m.—Flashback
9.00 p.m.—TBA
9.30 p.m.—NHL Semi Final
Chicago vs Detroit
11.15 p.m.—This Hour Has 7 Days
12.15 p.m.—Local Weather and Sport Scores

CKCW-TV

1.13 p.m.—Station Sign On
1.15 p.m.—The Country Calendar
1.30 p.m.—Country Calendar
2.00 p.m.—Faith in Action
2.30 p.m.—Wendy and Me
3.00 p.m.—French For Love
3.30 p.m.—The Valiant Years
4.00 p.m.—The Passover
4.25 p.m.—CBC TV News
4.30 p.m.—20-20
5.00 p.m.—Timmy's Easter Parade of Stars
6.00 p.m.—Show on Shows
6.30 p.m.—Easter Concert
7.00 p.m.—Walt Disney Presents
8.00 p.m.—Patty Duke
8.30 p.m.—Flashback
9.00 p.m.—TBA
9.30 p.m.—NHL Semi Final
Chicago vs Detroit
11.15 p.m.—This Hour Has 7 Days
12.15 p.m.—CBC News
12.25 p.m.—Local Weather and Sport Scores

CFCY RADIO

FRIDAY

6.30—News and Weather
6.35—Morning Roundup
6.45—Island Wr. Mar. Temp.
6.46—Morning Roundup
6.55—News and Weather
7.00—Hebrew Christian Hour
7.15—Morning Roundup
7.20—News and Weather
7.25—Farm Report
7.31—Morning Roundup
7.45—Island Wr. Mar. Temp.
7.46—Morning Roundup
7.56—Sports Capsule and Scoreboard
8.00—News
8.11—Weather
8.16—Morning Roundup
8.25—Weather
8.30—Atlantic News Roundup
8.35—Thought For Today
9.00—CBC National News
9.11—Preview Commentary - CBC
9.16—Notes and Music
10.00—News and Weather
10.05—Notes and Music
11.00—News and Weather
11.05—Notes and Music
11.45—Bulletin Board
11.50—Notes and Music
11.55—Atlantic News Roundup
12.00—Weather
12.05—P.E.I. Road Report
12.30—News and Weather
12.45—Town and Country Time
1.00—News and Weather
1.05—Town and Country Time
1.15—Tommy Hunter Show
1.45—Town and Country Time
2.00—News and Weather
2.05—Musical
2.15—National School Broadcast—CBC
2.45—Musical
3.00—News Headlines and Weather
3.03—Trans-Canada Maritime CBC
3.30—Tops in Pops
4.00—News Headlines and Weather
4.03—Canadian Roundup—CBC
4.10—Tops in Pops
5.00—News and Weather
5.05—The Outposts
5.25—Marine Weather
5.30—Interlude
5.35—Bob Goulet Show
5.35—The Outposts
6.00—News and Weather
6.15—On Parliament Hill—CBC
6.20—Today's Editorial—CBC
6.25—Sports Parade
6.30—Business Barometer—CBC
6.35—Tonight's Music
7.00—Back to the Bible
7.30—News and Weather
7.35—Prov. Affairs Alternate
Nations Business - CBC
7.55—Program Schedule
7.56—Tonight's Music
8.25—News Headlines and Weather
9.00—University of the Air—CBC
9.30—Chamber Music
10.00—CBC National News, On Par. Hill and Speaking Personally
10.30—Starlight Serenade
11.00—News and Regional Weather
11.05—Starlight Serenade
11.30—News and Weather
11.35—Starlight Serenade
12.00—CBC News, Weather and Sports CBC
12.15—Pops Concert

CKCW-RADIO

6.00—The Morning Show, Part 1
7.00—The Morning Show, Part 1
8.00—CBC News and Inland
8.15—Maritime Sportscast
8.21—The Morning Show, Part 2
8.25—The Bob Goulet Show
8.35—Max Ferguson
9.00—CBC News
9.10—Commentary
9.16—A.M. Chronicle
10.15—Playroom
10.30—Current and Choice
11.00—CBC News
11.05—Jean Marshall
11.15—For Consumers
11.20—Record Album
11.30—The Archers
11.45—Music On The Hearst
12.00—Jamboree Junction
12.30—Maritime Farm 'n' C'ast
12.15—Toronto's Evening Ford
1.00—CBC News and Weather
1.45—Time Out For Melody
1.59—D.Q. Time Signal
2.00—Time Out For Melody
2.15—National School 'n' C'ast
2.45—It Happened Today and John Drainie Tells A Story
3.00—CBC News
3.03—Trans-Canada Maritime
3.30—Trans-Canada Maritime
4.00—CBC News
4.03—Canadian Roundup
4.10—Music In The Air
4.30—Countdown
5.00—Mer. Fish 'n' C'ast
5.20—Tempo, CBC Notebook
6.00—CBC News
6.15—On Parliament Hill
6.20—Today's Editorial
6.25—Island Weather and Sports

SATURDAY

6.00—The Morning Show, Part 1
7.00—The Morning Show, Part 1
8.00—CBC News and Inland
8.15—Maritime Sportscast
8.21—The Morning Show, Part 2
8.25—The Bob Goulet Show
8.35—Max Ferguson
9.00—CBC News
9.10—Commentary
9.16—A.M. Chronicle
10.15—Playroom
10.30—Current and Choice
11.00—CBC News
11.05—Jean Marshall
11.15—For Consumers
11.20—Record Album
11.30—The Archers
11.45—Music On The Hearst
12.00—Jamboree Junction
12.30—Maritime Farm 'n' C'ast
12.15—Toronto's Evening Ford
1.00—CBC News and Weather
1.45—Time Out For Melody
1.59—D.Q. Time Signal
2.00—Time Out For Melody
2.15—National School 'n' C'ast
2.45—It Happened Today and John Drainie Tells A Story
3.00—CBC News
3.03—Trans-Canada Maritime
3.30—Trans-Canada Maritime
4.00—CBC News
4.03—Canadian Roundup
4.10—Music In The Air
4.30—Countdown
5.00—Mer. Fish 'n' C'ast
5.20—Tempo, CBC Notebook
6.00—CBC News
6.15—On Parliament Hill
6.20—Today's Editorial
6.25—Island Weather and Sports

SUNDAY

6.00—The Morning Show, Part 1
7.00—The Morning Show, Part 1
8.00—CBC News and Inland
8.15—Maritime Sportscast
8.21—The Morning Show, Part 2
8.25—The Bob Goulet Show
8.35—Max Ferguson
9.00—CBC News
9.10—Commentary
9.16—A.M. Chronicle
10.15—Playroom
10.30—Current and Choice
11.00—CBC News
11.05—Jean Marshall
11.15—For Consumers
11.20—Record Album
11.30—The Archers
11.45—Music On The Hearst
12.00—Jamboree Junction
12.30—Maritime Farm 'n' C'ast
12.15—Toronto's Evening Ford
1.00—CBC News and Weather
1.45—Time Out For Melody
1.59—D.Q. Time Signal
2.00—Time Out For Melody
2.15—National School 'n' C'ast
2.45—It Happened Today and John Drainie Tells A Story
3.00—CBC News
3.03—Trans-Canada Maritime
3.30—Trans-Canada Maritime
4.00—CBC News
4.03—Canadian Roundup
4.10—Music In The Air
4.30—Countdown
5.00—Mer. Fish 'n' C'ast
5.20—Tempo, CBC Notebook
6.00—CBC News
6.15—On Parliament Hill
6.20—Today's Editorial
6.25—Island Weather and Sports

Britain Moves To Cut Outflow Of Capital

By HAROLD MORRISON

LONDON (CP)—Britain has decided to restrict the use of official reserves for overseas investment in Canada, the United States and other dollar-area countries, reducing the outflow of long-term capital by at least £200,000,000 (\$300,000,000) a year.

James Callaghan, chancellor of the exchequer, told Parliament Tuesday in order to get funds at the official exchange rate, investors in future will have to show that the outlay will in a few years' time bring more money into Britain than went out.

Investors still will be able to get funds through the British investment market where dollars recently have been at a premium of between seven and 12 per cent. Or the investors could try to borrow abroad, and Callaghan said he hoped they would borrow abroad as much as possible.

But even this premium investment market is to be curbed. British residents selling their foreign assets and sending the proceeds home will have to sell one-quarter of these proceeds to the Bank of England at the official exchange rate, leaving only 75 per cent available for sale on the investment market. Previously the full proceeds could be sold at the premium rate and could be shipped abroad again.

HELP FOR STERLING

"The broad effect of this change," Callaghan said in his budget speech, "will be to bring into the official reserves 55 per cent of the proceeds of all sales by United Kingdom residents of non-sterling securities and direct investments. This will help to strengthen sterling."

Callaghan also estimated that when his new corporation tax comes into effect next year, taxes reaching the British treasury from companies with overseas income "will ultimately be increased by something of the order of £100,000,000 a year."

"While it is not possible to put a figure on the balance of payments effects, I think it is clear it will bring a marked benefit to our external account."

To meet, in extent, the general impact of Callaghan's steps, together with others announced, may trim the availability of world capital to finance economic expansion.

This follows steps by the United States to trim its capital outflow.

Prime Minister Wilson last week remarked that in the international field there is almost "an undeclared war in the monetary field." The U.S. had taken "counter measures" when France started to turn more of its U.S. dollar holdings into gold thereby reducing the U.S. gold stocks.

OFFICIALS DISTURBED

In Canada's case, British officials are somewhat disturbed by the higher Canadian tax on foreign held companies. Revival of a Canada-United Kingdom agreement to prevent double taxation has been suspended and a British official said even with Callaghan's new budget, there is no indication as yet

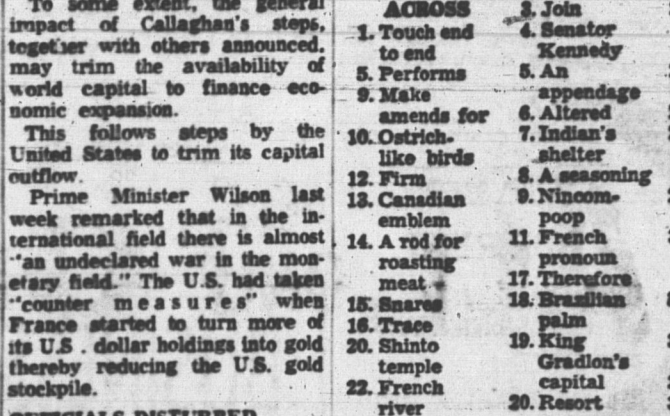
Other British restrictions announced will curb funds available for investment in non-sterling housing to one source for each investing family. There will be tighter scrutiny to make sure British receipts for exports are made within six months from shipment of goods.

Tourist travel won't be restricted, but all foreign funds used for this purpose will be noted on the traveller's passport. Up to £250 will be allowed for each journey, as before, but the amount of sterling notes allowed will be reduced to £25 from £50.

YIELDS TO STUDENTS

MADRID (AP)—Gen. Franco offered Spain's university students greater self-government in campus organizations Wednesday but at the same time warned them against trying to set up centres of education for political activities. The offer came through publication of an official decree approved at the last providing for student election of officers in student associations throughout Spain.

RIPLEY'S BELIEVE IT OR NOT



EMPEROR AURANZEB

(1619-1707) of India FOR A PERIOD OF 30 YEARS PRIOR TO ASCENDING THE THRONE ALWAYS CLUTCHED A COPY OF THE KORAN UNDER HIS ARM DAY AND NIGHT—EVEN WHEN HE WAS ASLEEP.

DAILY CROSSWORD

ACROSS
1. Touch end to end
2. Pouch
3. Make amends for
4. Ostrich-like birds
5. Firm
6. Canadian emblem
7. A rod for roasting meat
8. Snares
9. Trace
10. Shinto temple
11. French river
12. Exclamation
13. Minute skin opening
14. Terrible
15. From: prefix
16. Cougar
17. Recent
18. Invertebrate
19. Scorch
20. Close
21. Marshal
22. Scope
23. Agricultural student: U.S. slang
24. Inflow
25. "—to Let"
26. Web-footed birds
27. Upon
28. South American liberator

DAILY CRYPTOQUOTE

Here's how to work it: AXYDLBAAX is LONGFELLOW. One letter simply stands for another. In this sample A is used for the three L's, X for the two O's, etc. Single letters, apostrophes, the length and formation of the words are all hints. Each day the code letters are different.

OUR BOARDING HOUSE MAJOR HOOPLE

THIS MEETING WILL NOW COME TO ORDER! YOU ALL KNOW I'M A GOOD SPORT, BUT THOSE SPOOK PRINTS ON MY KITCHEN WALLS AND CEILING MAKE ME TOO NERVOUS TO COOK! SO WHILE THEY'RE THERE I'LL BE COLD CUTS AT EVERY MEAL! ANY QUESTIONS?

GOLD WE HAVE 40 LASHES AND NOT NEARLY AS MANY AS MRS. HOOPLE? THREE DAYS OF COLD CUTS AND EVEN THE MAJOR'S COOKING WOULD TASTE GOOD!

ANY TIME OFF FOR GOOD BEHAVIOR—LIKE WASHING WALLS?

WELL, THEY OFFERED ME A \$10,000 RAISE... BUT I HELD OUT... NEVER SHOWED UP FOR SPRING TRAINING... AND THEN JUST TWO WEEKS BEFORE THE SEASON STARTED... I GOT MY FIRST JOLT!

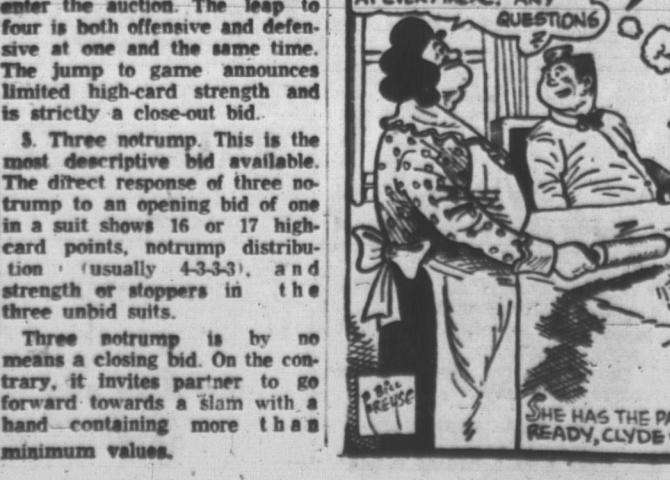
I WANT A \$20,000 RAISE! ANY FIGURE LESS THAN THAT WON'T INTEREST ME!

I'LL PASS IT ALONG TO THE FRONT OFFICE, SOUTHPAW!

I NEED YOU TO WITNESS A WEDDING—??—(THE COMPANY'S TURNED OFF MY POWER!)

BLUSH!!—EAT CANDLEDIGHT WEDDINGS COST JUST TWO DOLLARS EXTRA, AND ARE MUCH MORE ROMANTIC!!

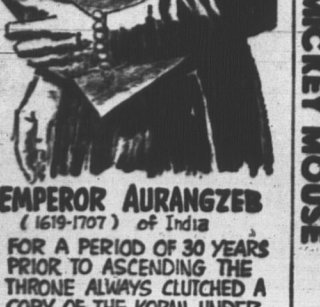
HANG TH' COST!! MAH CHILE NEEDS A MOTHER!!



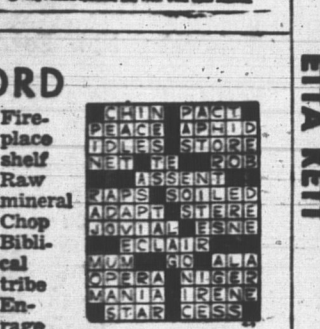
GRANDMA



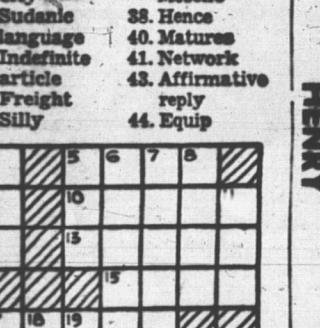
MURDER



SECRET AGENT X-9



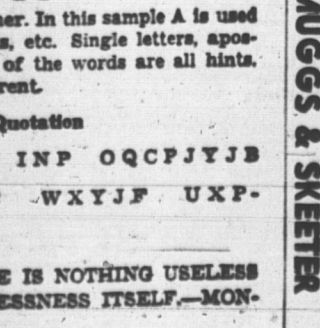
MURDER MOUSE



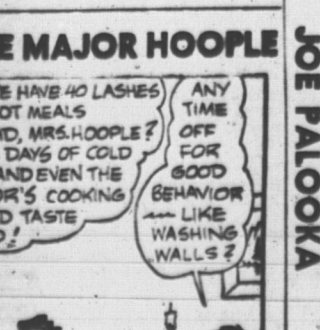
ETNA KET



HENRY



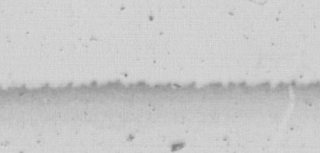
THE LONE RANGER



MUGGS & SKETER



JOE PALOOKA



L. L. ARNER

CONTRACT BRIDGE

By B. JAY BECKER

QUIZ

Partner bids One Heart, next player passes, both sides vulnerable. What would you now bid with each of the following five hands?

- ♠74 ♠AQ73 ♠J86 ♠KJ62
- ♠A883 ♠Q876 ♠83 ♠78
- ♠AQ78 ♠7 ♠K36 ♠AJ852
- ♠9785 ♠Q8652 ♠— ♠KQ74
- ♠AJ76 ♠Q74 ♠K8Q2 ♠AJ78

1. Two clubs. The hand is too good for two hearts (usually six to nine points), and not quite good enough for a response of three hearts (usually 13 to 15 points). The best thing to do is neither a single nor double raise would be correct, it is to bid a side suit and in this way straddle the issue. The heart fit can be shown later, after partner responds to two clubs.

2. Two hearts. This hand is about average for a raise to two hearts, and the best way of identifying it is to raise partner immediately.

3. It is not advisable to respond one spade because of the possibility that partner's rebid might be two hearts, in which case we would be torn between the desire to pass or to bid two hearts. The easiest way to avoid this dilemma is by an immediate heart raise.

4. Two clubs. This bid is likely to prove far more illuminating by the time the bidding is over than a response of one

spade. When you bid two clubs and follow this with a two spade bid after partner's probable rebid in hearts or diamonds, your partner will then know that the spades are only four cards long and that the clubs are at least five cards in length.

A direct response of one spade, followed by a later mention of the clubs, would fail to identify the actual distribution and might easily lead to a wrong contract.

4. Four hearts. Whether partner can make this contract or not is highly uncertain, but the point is that preemptive tactics are called for so that it will be difficult for the next player to enter the auction. The leap to four is both offensive and defensive at one and the same time. The jump to game announces limited high-card strength and is strictly a close-out bid.

5. Three notrump. This is the most descriptive bid available. The direct response of three notrump to an opening bid of one in a suit shows 16 or 17 high-card points, notrump distribution (usually 4-3-3-3), and strength or stoppers in the three unbid suits.

Three notrump is by no means a closing bid. On the contrary, it invites partner to go forward towards a slam with a hand containing more than a minimum value.

