



PLAYING FIELD TO BANDSTAND

Toronto band leader Benny Louis says Nancy McCredie is potentially the best singing talent in Toronto. The Canadian shotput and discus champion rehearses for her debut with the band Jan. 28 at a college dance. Nancy auditioned while in hospital recovering from a knee operation. (CP Wirephoto)

Second Annual Meeting Held By Spring Park United Church

The second annual meeting of the Spring Park United Church congregation was held Monday night in the new auditorium of the Christian Education Centre, with approximately 75 present. The opening devotions were led by the minister, Rev. Clayton C. Lewis, after which Mr. Lewis was elected chairman for the evening and Ewen Campbell was elected secretary. Mr. Campbell then read the minutes of the last annual meeting which were approved as read. 1965 reports of the Session, Building Committee and of the Minister, along with reports printed in the annual Manual were approved. Some of the important items of business passed at the annual meeting were as follows: Nominations of the Session included Ross Merriam, Robert MacKinnon, Ralph Mallett and Rev. F. H. Littlejohns. Nominations to the Board of Stewards included Cecil Dunbar, Jack Cutcliffe and John Gilmore. John Simmonds was nominated to the trustees. The above nominations were all approved.

APPOINTMENTS
Ewen Campbell, clerk of session, was named official representative to Presbytery and Mrs. O.K. Presby and Earle Riggs were appointed to represent the congregation at the Canadian Bible Society.

The Men's Club will take on the project of getting subscriptions to the church papers—Observer, United Churchman and the Christian Home, Reuel Le-

Page again agreed to represent the congregation on the Protestant Welfare Board. Mrs. Ewen Stewart will handle Public Relations for the coming year.

RECOMMENDATIONS
Dr. K. Ross Parker then presented a number of recommendations from the official board which showed that a great deal can and should be done by the congregation in this fast growing area. Robert Younker was officially appointed General Sunday School superintendent. George Cairns presented the 1966 budget and auditors for the coming year are to be H.R. Doane and Co. It was noted that representation from Session, Stewards, Men's Club and UCW are to be appointed on the M and M, Music and Pastoral Relations Committees, and as yet no General Christian Education Chairman has been appointed to replace Dr. K. Ross Parker.

THANKS EXTENDED
Jack Johnston and Mrs. Ewen Campbell, treasurer and assistant treasurer, were extended a vote of thanks by the minister, after which Fulton Robertson expressed his thanks on behalf of the congregation to Mr. Lewis for his Christian concern, encouragement and leadership to his congregation during this important year in the history of the Spring Park area. Some 86 new members joined the congregation during the past year. Representatives of the UCW served lunch during the social hour which followed.

HORMONE PILLS GIVEN BLAME

HIGH WYCOMBE, England (AP)—Bob Evans, 40, says strange things happened to him and some of his work mates in a factory making birth control pills—they started to grow curvy.

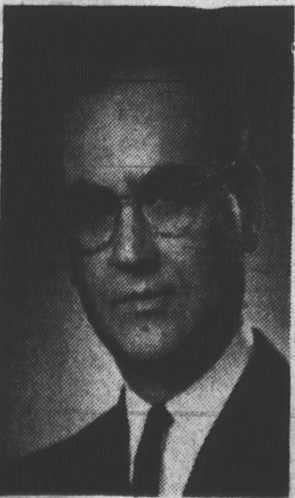
"I started getting headaches," Evans said. "Then I noticed that my breasts were starting to swell. I also felt completely impotent."

Evans and the other men affected were heavily exposed to synthetic female hormones used in the pills. Switched to other jobs, they quickly became fit again. Middle-aged women took over from them.

Though they were provided with special clothing, an official said "they have been absorbing the hormone chemicals in dust form—through the skin or by breathing it in."

Dr. David Anderson, 37, a chemistry expert who is production director in the factory, said: "The problem has no bearing on the safety or effectiveness of my firm's birth-control pill."

Enamel & Heating Appointment



N. A. Hester, president of Enamel & Heating Products Limited, of Sackville, N.B., announces the appointment of D. F. Wiley as Comptroller of the company.

Mr. Wiley has been associated with Enamel & Heating for over 19 years and prior to his new appointment was assistant secretary-treasurer.

PLAN ENLARGE FLEET

SANTIAGO, Chile (Reuters)—The Chilean Inter-Ocean Navigation Company plans to order two 10,000-ton freighters in Japan or Brazil, initially to play between here and Vancouver, a company spokesman announced Saturday. The ships would later become part of a Latin-American joint fleet to serve North and South American ports, he said.

BLAST KILLS FOUR

KAWASAKI, Japan (AP)—An explosion aboard an American military landing craft moored for repairs at the Hitachi shipbuilding yards killed four Japanese workmen Sunday and injured five others. Kawasaki is 13 miles south of Tokyo.



Stationery, wedding invitations, invoices, statements and all your job printing requirements. All jobs guaranteed.

GUARDIAN - PATRIOT CENTRAL PRINTERY

EATON'S SPOTLIGHT SALE

THURS.
FRI.
SAT.

NOTIONS

- Basket Chair Covers**
New Spanish effect print, tufted and foam filled, assorted colours. each **6.99**
- Basket Chair Covers**
Tufted corded cotton, orange, gold or moss green each **4.79**
- Chrome Chair Sets**
Coronet print, ruffled seat, tie tape, blue, green, red or yellow. **87c** each or **4 for 3.39**
- Plastic Lingerie Hangers** **89c**
- Fur Coat Hangers** **89c**
- Chrome Ladies Shoe Rack**
Holds 9 pairs shoes, stands on floor. **2.38**
- Shoe Rack For Men**
Holds 6 pairs shoes **2.38**
- Sanitary Pant Nylon Acetate** **89c**

- Furniture Covers**
Vinylite 4 gauge
- Club Chair 30" **2.38** Sofa 78" **3.79**
- Club Chair 36" **2.79** Sofa 84" **4.39**
- Club Chair 42" **3.79** Sofa 90" **5.39**
- Wing Chair **2.79** Cogswell Rocker **3.79**

- Lady Fair Sayella Yarn**
2 oz. skeins, wide variety of colours, machine washable. each **71c**
- Lady Fair Knitting Worsted**
2 oz. skeins, good range of colours, pure wool. each **63c**
- 3 Ply Lady Fair Fingering Yarn**
1 oz. balls, good variety of colours, shrink resist, nylon reinforced. each **48c**
- 4 Ply Lady Fair Fingering Yarn**
1 oz. balls, beautiful shades, shrink resist, botany, nylon reinforced. each **48c**
- Lady Fair Tapestry Wool**
Moth proof, 4-oz. balls, wide variety of colours. each **48c**
- Nelaine Double Knitting**
2 oz. balls. each **73c**
- Lady Fair Nylon Yarn**
1 oz. balls, wide variety of colours. each **31c**

- Needlepoint Stools**
Mahogany 12 x 15 x 9. **9.95**
- Needlepoint Stools**
Walnut 12 x 15 x 9. **9.95**
- Mattress Toppers**
Foam rubber
- Twin Bed 70 x 36 x 5/8 **7.99**
- Double Bed 70 x 80 x 5/8 **9.99**
- Foam Slabs**
- 24 x 72 x 2 **4.79** 24 x 72 x 4 **9.99**
- 18 x 72 x 4 **7.99** 30 x 72 x 4 **11.99**
- Rayon Satin Cushions**
Kapok filled, round, square or knife edge, assorted colours. **2.25 or 3 for 5.98**

EATON'S Semi-Annual Sale

Continues until Feb. 12th.
Check our 8 Page Circular for Money Saving Values.

LINGERIE and STATIONERY

- Pettipants**
Two-way stretch nylon lace, tiny pleating at leg edge, sizes small, medium and large, colours white and black. Special, each **2.40**
2 for 4.75
- Panties**
Flare leg, rayon tricot, web elastic at waist, hemmed leg edge with picot trim, white only. Sizes medium and large **79c**
or **3 pairs 2.25**
Sizes oversize **95c**
or **3 pairs 2.69**
- Briefs**
Stretch nylon lace, two way stretch, elastic at waist and legs, sizes small, medium and large. Special, each **1.20**
2 for 2.35
- Vests**
Rayon tricot, narrow built up shoulders, hemmed lower edge, sizes medium and large, colours white only. Special, each **79c**
or **3 for 2.25**
- Panties**
Short leg, rayon tricot, web elastic at waist, band leg with picot trim. Sizes med. and large **79c**
or **3 pairs 2.25**
Sizes oversize **95c**
or **3 pairs 2.69**
- Briefs**
Elastic leg, web elastic at waist and legs, white only, sizes small, medium and large. Special, pair **55c**
or **3 pairs 1.59**

LINGERIE DUSTERS

Printed rayon sateen, floral print on white ground, collarless neckline, short cuffed sleeves, two 1/2 inch frills at hemline, colours blue, pink, green, sizes petit small, medium and large. Special, each **4.99**

LINGERIE DUSTERS

Printed rayon sateen, all over floral print, scalloped Chelsea collar, short cuffed sleeves, sizes small, medium and large 40, 42, 44. **4.99**

FOUR DRAWER Filing Cabinet

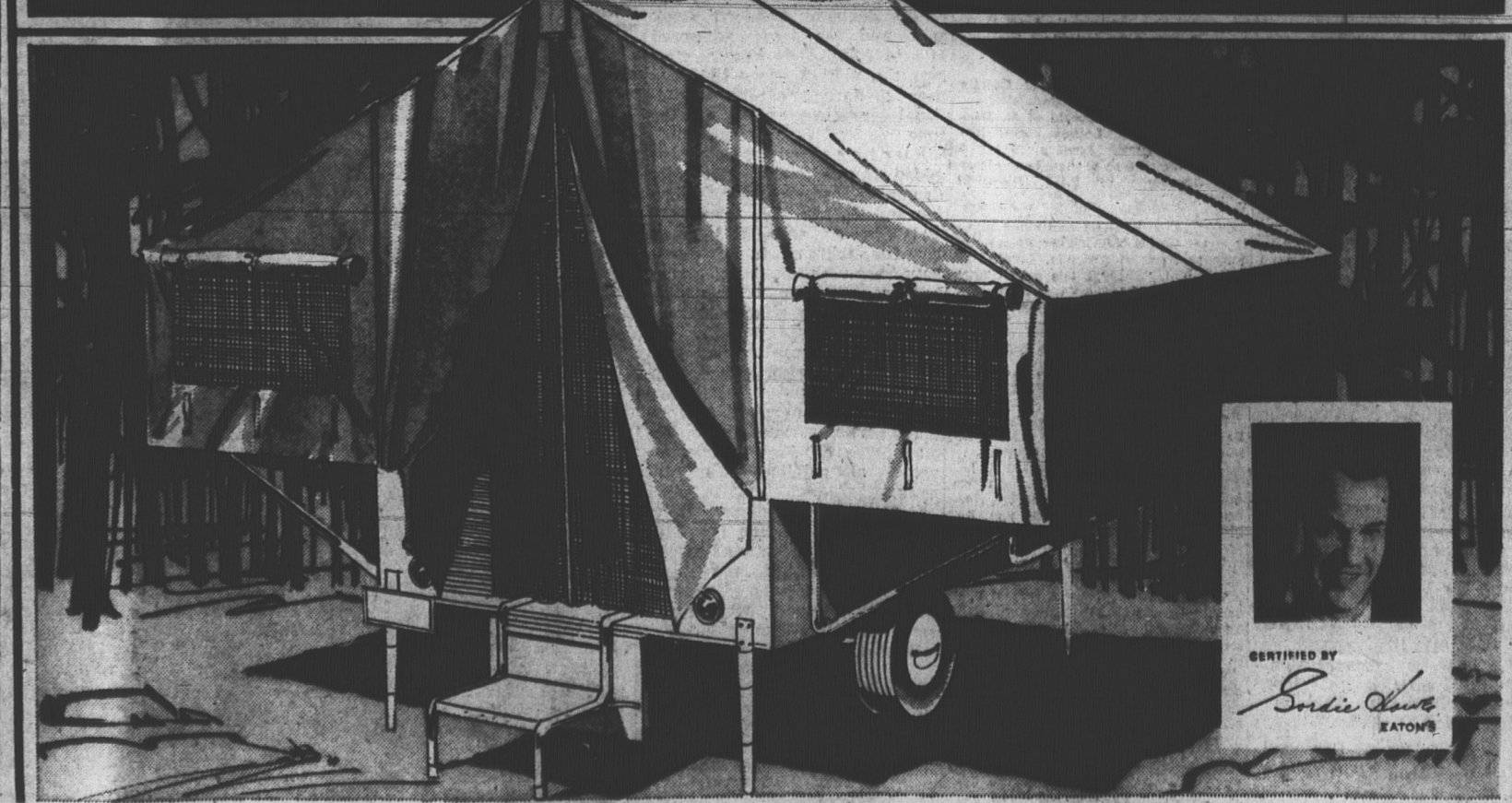
Size 15 x 26 1/2 x 52 1/2, letter size, full suspension arms-allow drawers to glide in and out easily, colour grey. Special, 4 drawer, ea. **59.95**
Special, 3 drawer, ea. **54.95**

Space Saver Files

All steel constructive top opens for handy file compartment, large lower door opens to compartment with shelf, separate lock and key for each compartment **11.99**
Special, each



an EATON SUPER VALUE TRULINE CAMPMASTER CAMPING TRAILERS



Eaton 'Truline' Campmaster Camping Trailers

If your plans for this year include camping, take a look at the features below. We think you'll agree... the extra features and off-season savings now in effect make your best value on Eaton Truline Campmaster camping trailer—now! TENT. Made from Eaton's exclusive tent drill, in pearl-grey colour. Features 'Durafin' water-repellent finish for extra protection. Steel frame assembly, easily erected. Features 3 vinyl-coated nylon screen windows for ventilation, roll-up storm flaps. BODY. Stained B. C. fir plywood floor is riveted to the trailer frame. Sturdy 18-gauge metal sides in ermine white. Lids and benches are 3/4" plywood, secured to trailer sides. Complete with combination stop-tail turn sign and license holder. LARGE SIZE allows 4 to sleep comfortably (2 on each side). Extra sleeping room on floor for youngsters. ALL WELDED STEEL FRAME has extra 14-gauge, tubular steel cross rails for greater strength. Detachable tongue has a trailer hitch, safety lock and chain. RUNNING GEAR "HAMMER BLOW" heavy-duty axle, 3-leaf springs, shackles and shackle bolts. 4.80/4.00 x 8" high-speed tires and sealed-in be rings, keep the trailer running smooth ly.

WEIGHT. Complete trailer weighs about 500-lbs. Opens from about 6' x 6'6" x 32" deep to 12-foot width and 4 1/2-foot height. With 10-oz. water-resistant duck travelling cover and fold-down door with entrance steps. FIELD-TESTED by experts over 7000 miles of camping and travelling. Save 100.00. Ordinarily 399.00!

Eaton's Budget Charge Terms with no down payment may be arranged. No monthly payments until March 1st, 1966. We will deliver your trailer when it is most convenient to you.

About 24 x 72", of high density foamed polyethylene 2" thick. Good quality cotton mattress ticking on top with flat elastic tape inserted into the 4 boxed corners. each **9.95**

Double Mattress and Cover—Similar to above, measures about 46 x 76". each **17.95**

299.00

SALE, EACH

T. EATON & CO.