

JOIN THE FUN
AND EXCITEMENT
PLAY...

WIN VACATION

CROSS CANADA

A New "Truly Canadian" Game!



ALBERTA



SASKATCHEWAN



MANITOBA



ONTARIO



BRITISH COLUMBIA

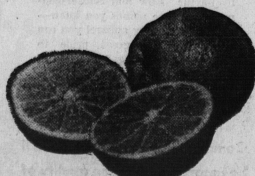
DOMINION'S OWN DOMINO
CHEESE SPREAD
16 OZ. JAR **65c**

DOMINION'S OWN DOMINO PLAIN
CHEESE SLICES 8 OZ. PKG. **31c**
DOMINO INSTANT
COFFEE 6 OZ. JAR **95c**
DOMINION'S OWN RICHIELLO
Salad Dressing 16 OZ. JAR **37c**
DOMINION'S OWN DOMINION
CHOCOLATE BARS 5 PACI BAR **39c**
NEW AT DOMINION—DOMINO BLUE
DETRGENT 16 OZ. PKG. **33c**

SAVE ON FRESH FRUIT and VEGETABLES

WEEKEND SPECIAL
SUNKIST SWEET 'N JUICY

ORANGES



SIZE 3 DOZ. \$1
180

LARGE, FIRM, CRISP ICEBERG
LETTUCE SIZE 24 **2 FOR 49c**
CRISP 'N CRUNCHY GREEN PASCAL
CELERY SIZE 24 **2 FOR 49c**
FOR SALADS—LONG, GREEN, FIRM
CUCUMBERS **2 FOR 35c**
RUBY RED, FIRM
RADISH 6 OZ. PKGS. **29c**

CROSS CANADA SPECIAL

CROSS CANADA SPECIAL

CROSS CANADA SPECIAL

SAVE 30c CASH
MAPLE LEAF CANNED PICNIC STYLE
PORK SHOULDER

SAVE 9c ON TWO TINS
SCOTIAN GOLD VITAMINIZED
APPLE JUICE

STOCK UP FOR THE LONG WEEKEND
DOMINION'S OWN—DOMINO DRY
GINGER ALE

1 1/2 LB. TIN **1.09**

2 48 OZ. TINS **65c**

2 30 OZ. BTLs. **39c**
Plus Deposit

HEINZ BREAD & BUTTER
PICKLES 16 OZ. JAR **29c**

HEINZ TOMATO
KETCHUP 15 OZ. BOTTLE **31c**

HEINZ FANCY QUALITY
TOMATO JUICE 48 OZ. TIN **39c**

ESTA BONELESS
CHICKEN 7 OZ. TIN **37c**

BILLY BEE PURE CREAMED
HONEY 16 OZ. TUB **32c**

CLOVER LEAF FANCY PINK
SALMON 8 OZ. TIN **38c**

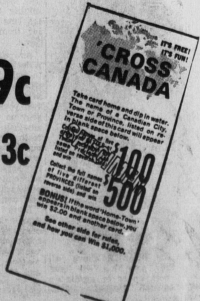
DOMINION'S OWN SYMPHONY
FACIAL TISSUE 400s PKG. **29c**

AVON CHOICE CLAPP
PEARS 15 OZ. TIN **21c**

FROZEN FOODS

DOMINION'S OWN—FRESH FROZEN
ORANGE JUICE 2 6 OZ. TINS **69c**

DOMINION'S OWN DOMINO French Fries 16 OZ. PKG. **31c** | McCAIN'S FRESH FROZEN Green Peas 2 LB. POLY **53c**



Get your **FREE CARD** today...and on every visit you make!



DOMINION

QUEEN STREET, CHARLOTTETOWN

DOMINION STORES LTD.

ST. PETER'S ROAD, PARKDALE

NON FOODS
St. Peters Road

New, Assorted Colors
Web

LAWN CHAIRS

EACH **5.66**

Dominion DeLuxe
100% Nylon

SLEEPING BAG

EACH **7.50**

Values Effective
Until Closing
Saturday
May 16th

WE RESERVE
THE RIGHT TO
LIMIT QUANTITIES