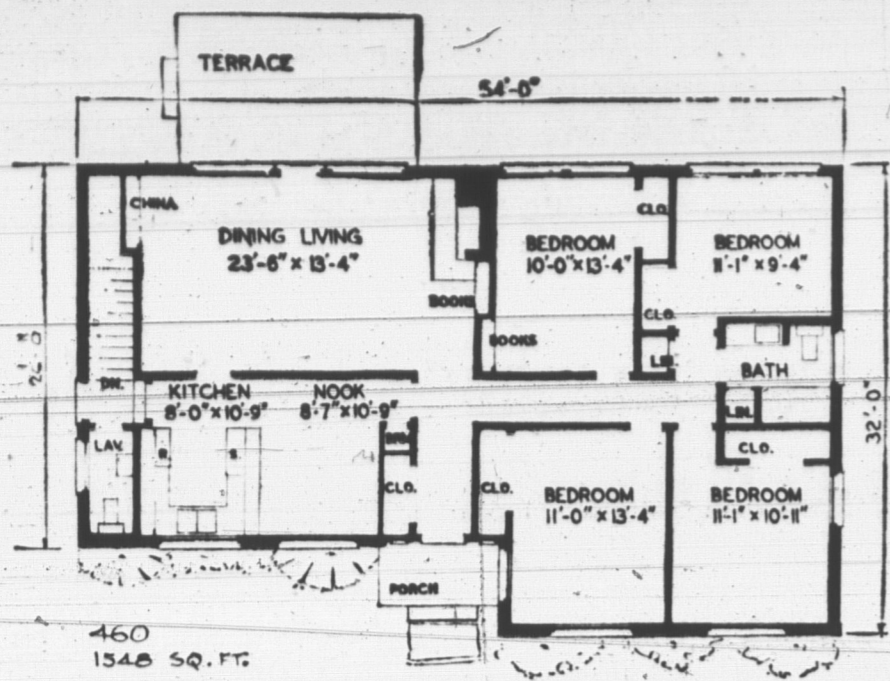
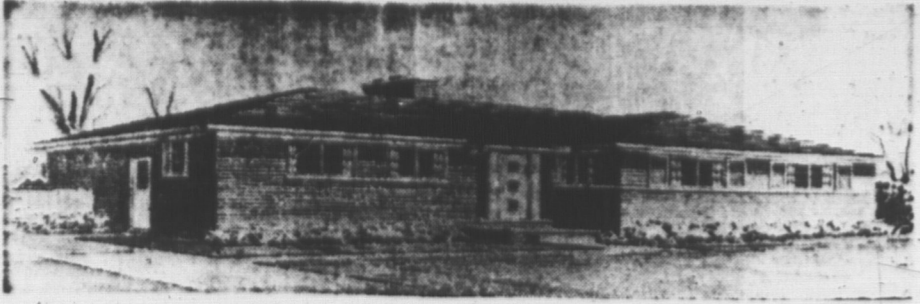


GUARDIAN-PATRIOT HOME OF THE WEEK



Featuring a large kitchen, 16' 7" long including the nook, this four bedroom design has larger than average rooms for a house of this size. There is ample closet space in all bedrooms. The living room has a corner fireplace and direct access to the terrace. Extra washroom is conveniently located close to the side entry and basement stair. The construction is brick veneer. In some localities house could be built on a 60 foot lot.

HOW TO OBTAIN DESIGN BOOK

The latest design book entitled, "Canadian Guide to Home Planning and Design" is now available at the offices of The Guardian and The Evening Patriot for \$1, xat free. This new edition includes, color selection, etc., plus over 100 popular new designs to choose from. Also included are full designs on how to order blueprints.

First Aid For Ailing Houses

By ROGER C. WHITMAN
BROKEN BROWNSTONE
QUESTION: We have an old brownstone stoop with some broken places. How can these be repaired?
ANSWER: Repair the broken mortar, tinted with iron oxide to match the color.
GALVANIZED PANS ON RAD
QUESTION: I moved into a house with hot water, oil heat. The radiators have covers and there is a galvanized pan on each radiator under the cover. What are the pans for?
ANSWER: These are humidifying pans, and should be kept filled with water during the heating season. The water is evaporated off, during heating, and keeps house air from becoming too dry.
DULED BIRCH CABINETS
QUESTION: I have birch kitchen cabinets which have become dull-looking. How can I clean them and keep them looking well?
ANSWER: Easiest way for keeping most flat, hard surfaces clean and bright is by using a white cream, clean-up wax, made by a nationally known manufacturer and widely available at supermarkets, housewares, hardware and variety stores. Follow label instructions. For use. The wax removes any surface soil and grime, at the same time leaving a protective coating to prevent dirt penetration.

ACID STAIN ON CONCRETE
QUESTION: How can I remove a battery acid stain from the concrete apron in front of the garage?
ANSWER: To remove the effects of dry battery leakage on concrete, National Carbon Company suggests washing the area down thoroughly with cold water. If this treatment is not sufficient add one or two drops of muriatic acid to a pail of water and apply. Allow this to remain on the concrete for a short time, then rinse thoroughly with cold water. Complete removal may be impossible if the stain is deeply embedded in the concrete pores.

PANTRY PESTS
QUESTION: I have been ill for a while and unable to take care of the household chores. My husband and the children have been shifting for themselves, (and me), and now I discover the pantry has small bugs in cereals, etc. What's the best way to get rid of this infestation? I've thrown out all the food I could.
ANSWER: The following treatment is suggested by the department of agriculture for getting rid of pantry pests: Destroy all infested products (as you've done). Clean all shelves thoroughly. Then spray all closet surfaces with a five per cent DDT (be sure all dishes, and foodstuffs are first removed). All

UPSET STOMACH HEART-BURN

Get fast, soothing relief from upset stomach and hyperacidity this pleasant, easy way. Relieve the distressing discomfort of indigestion, heartburn, stomach acidity and flatulence. Get pleasant tasting Dickson's Stomach Powder. At drugists everywhere.



Painters with tight-fitting covers
FROSTING WINDOW GLASS
QUESTION: Is there anything available to make clear glass frosted? The street we live on has become more crowded and we would like to make the lower sash of our porch windows less easy to see through.
ANSWER: Most paint and hardware dealers now have available a special paint in aerosol form for frosting over glass by leaving a white film over the surface. A do-it-yourself method is to cut a sheet of white tissue paper the size of the pane and attach it to the glass with spar varnish thinned with one-fourth as much turpentine.
PAINTING NEW WALLS
QUESTION: We moved into our newly finished home the early part of last summer, gradually painting the plaster walls ourselves. Now we are ready to paint the kitchen walls, but these look dirty. What's the proper procedure now?
ANSWER: Before painting the walls, the grease accumulated on the surface of the plaster from cooking should be washed off. Otherwise paint may not adhere or dry satisfactorily. Wash the walls with a warm solution of one of the detergent cleaning powders, mixed according to label instructions. Rinse well with clear water and allow the plaster to dry thoroughly. Then give the plaster a coat of primer-sealer. When that is dry, follow with enamel undercoater, then finish with a good quality enamel.
CHOOSING PROPER WOOD
QUESTION: We have just inherited an old house, in fairly good condition, with a lot of land around it. This has always been used by the family for vacations. We want to improve and repair it so we can use it for all-year round living and do most of the work ourselves. I'm not sure what kind of wood is best to use for various purposes: shelves, floors, fence, etc. Is there a n-y place I can get this information?

ANSWER: A reputable lumber dealer can help you with this type of information, and supply properly seasoned lumber. An excellent leaflet, "Selecting Lumber (No. D7-0)", is available for 15 cents from Small Homes Council, University of Illinois, Urbana, Ill. This contains information as to quality, types, grades, guide for selecting lumber.
PAINT-STUCK RADIATOR VALVE
QUESTION: We painted a bedroom during the fall, including the radiator to match the walls. We kept the radiator turned off to let the paint dry thoroughly before turning on the heat. Now we can't turn the valve to turn the heat on. How can we loosen the paint that is making the valve stick?
ANSWER: Use paint remover available at paint and hardware

store, following label directions. Be sure to protect any painted surfaces below and around the valve so that none of the remover can touch these and affect the paint on them.
CLOSE LOUVERS IN ATTIC?
QUESTION: Our newly built home has louvers at both ends of the attic area. But the attic floor has no insulation on it. Should we keep the louvers closed during the winter?
ANSWER: Louvers should be kept open all year 'round, to provide the ventilation and air circulation needed to prevent condensation, which can cause serious trouble. I highly recommend insulating the attic floor, to save fuel, and keep heat in the rooms below.
HUNDREDS MORE LIVE
 The infant mortality rate in Rio de Janeiro, Brazil's largest city, has been halved to 90 per 1,000 live births in 15 years.

MINEGOO LAUNDRY & DRY CLEANING
 106 Hillsboro St. Ch'town
 Coin Operated
 Dry cleaning \$3.00 for 8 lbs. load. Spotting and hanging included.
 Mon.-Sat. 8.00 a.m.-12 midnight
 Sunday-9 a.m.-12 midnight

If a man invests a definite percentage of his net income (after taxes) in PERMANENT PERSONAL POLICIES of Life Insurance he can free himself and his family of worries about "the future".



MOTOR REWINDING & REPAIRS
Storey Electric Ltd.
 136 Prince St., Ch'town

Your Biggest Opportunity of The Year to Save on a Washer May Pass You By, if You Don't Hurry - SALE ENDS SEPT. 11.

WASHERAMA

HERE'S WHAT THIS HOLMAN'S WASHERAMA MEANS TO YOU:

All these famous makers were approached for quantity purchases to enable Holman's big-store buying power to pass on the savings to you. It's a wonderful opportunity to get rid of your old, out-dated washer and the wash-day blues. Step up to a better way of life, with more leisure time, better-looking washes, through the washer you were able to buy during Holman's wonderful Washerama. TERMS? Sure you can use your convenient Holman's Optional Charge Account. Come in today and save on your new washer!

FREE HOLMAN BONUS OFFER:

- 6 months supply of Tide
- Ironing board and cover (deluxe heavy duty model)
- Plastic Clothes Basket (large size)

when you buy this fine, dependable

DELUXE BEATTY WASHER

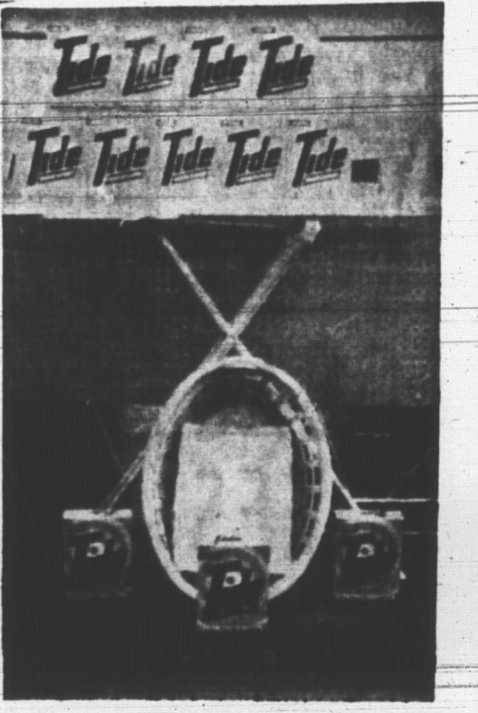
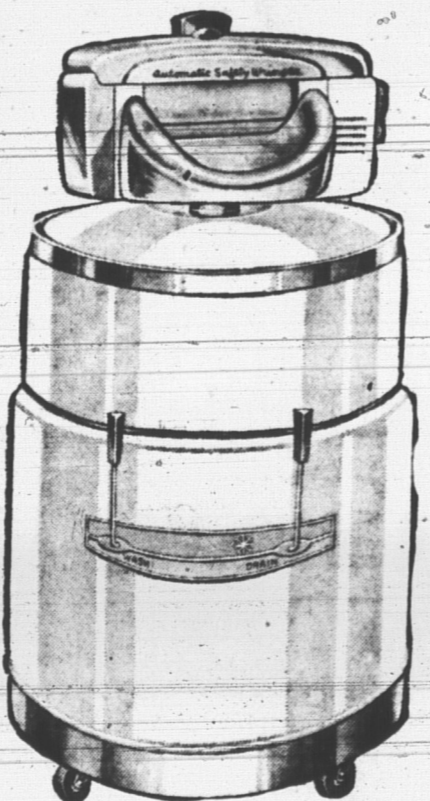
So you need a new washer and along comes Holman's with everything you need to make your wash-day easier on you... TIDE soap, ironing board, cover and big clothes basket. Try and beat it for value! Of course, you know that the Beatty exclusive "Human hand" washing action is guaranteed to wash clothes cleaner and faster, too. Every item comes out thoroughly clean, with this washing action, even delicate last longer. Hand-some chromed wringer swings freely in any angle. Big cushion-type rolls squeeze out more water from clothes. Many more wonderful features. Enjoy them now, and save!

174.95

Reg. 219.95—SALE

With you old washer in trade.

NO DOWN PAYMENT, 10.00 MONTHLY!

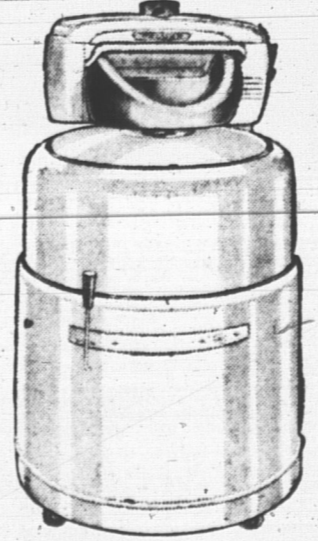


Our customers find it's the best kind of a wringer washer of all
BEATTY WRINGER WASHERS

Test-proven for years of service, Holman's have sold Beatty washers for over 30 years, some of them are still in use! Deluxe wringer-with chrome drain boards are self-adjusting to garment thickness. Large rollers wring clothes extra dry. Automatic trouble-free drain pump empties tub in only 27 seconds. Trouble-free mechanism... direct drive (only 4 working parts). Special 6-year warranty. You'll love it, come to Holman's today!

Reg. 179.95 value—SALE **144.97**

NO DOWN PAYMENT—10.00 MONTHLY

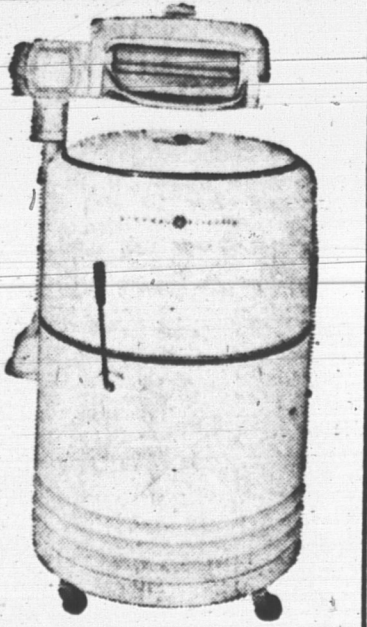


WRINGER WASHER

Ever wonder what really gets your clothes clean? Partly the soap you use, of course, but most important, the washing action. The G.E. 3-zone washing action soaps, flexes and scrubs by constantly, gently turning over each piece individually through the 3-wash zones. It's faster, too. Deluxe safety wringer, fast automatic drain pump. It's a Holman Washerama value not to be missed. Reg. 129.95 value—

SALE **104.97**

NO DOWN PAYMENT—8.00 MONTHLY



1965 FRIGIDAIRE AUTOMATICS

FRIGIDAIRE "JET ACTION" WASHERS

Revolutionary new principle pioneered by Frigidaire: jet currents give all your clothes deep action cleaning. Reduces tangling and wrinkles. Clothes come out so loose and easy... even apron strings seldom snarl. New jet spin cuts drying time! New "jet-away" rinse actually jets lint and scum out of tub. Giant size tub washes really big family loads, handles small fine fabric loads beautifully. Less moving parts to wear out, trouble-free! Come see it, buy it at Holman's.

Reg. 329.95 value—SALE **279.97**

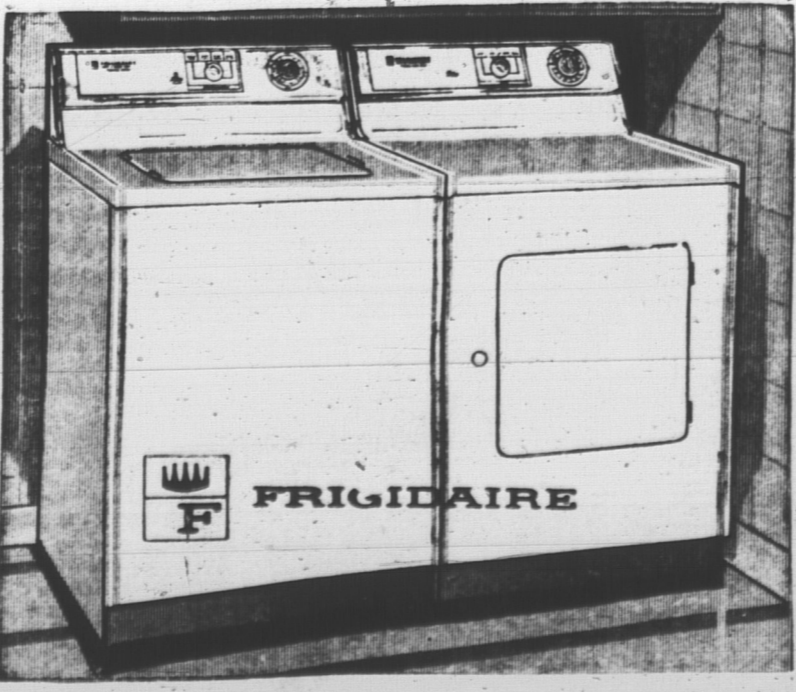
15.00 Monthly!

FRIGIDAIRE MATCHING CLOTHES DRYER

Gentle as a breeze... with Exclusive Frigidaire "Flowing Heat". Fills the drum with a moving stream of air. Never a hot spot. Every piece dries fluffy soft... clear through. Wrinkles away drying... for wash 'n wears. No stopping or stretching to reach the lint screen. Right on the door (where it should be) at your finger-tips. Even the tiniest lint particles are caught. Smooth as glass, rust-resistant porcelain enamel drum is mag-free for most delicate of delicates. See it and save on this Frigidaire, too.

Reg. 199.95 value—SALE **174.95**

No down payment, \$10 monthly!



STORE HOURS:
 Act Immediately!
 Charlotte
 Mon. thru Thurs. 9:00 - 5:30
 Friday 9:00 - 9:30
 Saturday 9:00 - 5:30
 Savings events like this are rare. Don't be disappointed, act now!
 Summerside
 Mon. thru Thurs. 8:30 - 5:00
 Friday 8:30 - 9:00
 Saturday 8:30 - noon



LOOK to HOLMAN'S For What's New and Beautiful in Fall Fashions!

New **Formfit Dress-Shapers® in Powder Buff skin-tone.**

Suddenly...you know your clothes and you look right! Dress-Shapers are the exciting underfashions created by Formfit to make your clothes look fashion-right. Powder Buff is the new, exciting Formfit skin-tone that's so flatteringly natural...it's like walking around in the buff!

Try the new next-to-nothing stretch strap bandeau in Powder Buff nylon marquisette, with soft fluted-pleated undercuts that mould and uphold you. Dress-Shaper Style 540. 32A-38C \$5.00

Then add the matching long-leg pantie in oh-so-sheer Lycra powernet with oh-so-soft nylon-tricot panels, natural back and 1" Poly waistband. Dress-Shaper Style 809, S.M.L. \$12.50

STORE HOURS:
 CH'TOWN: Mon. thru Thurs. 9:00-5:30 Friday 9:00-9:30 Saturday 9:00-5:30
 S'SIDE: Mon. thru Thurs. 8:30-5:00 Friday 8:30-9:00 Saturday 8:30-noon