

INCINERATOR SUPER CEDES OPEN DUMP

Fishing industry enjoys good year

The estimated value of sea products landed by Island fishermen last year is estimated at \$5,375,000. This compared with \$4,600,000 for 1963 officials report.

The lobster catch in 1964 was up over 400,000 pounds and the revenue up by over a million dollars.

Lobster value and poundage for the 1964 season with the 1963 figures in brackets follow: \$4,210,006 (\$3,156,000), and 7,822,820 pounds (7,378,000 pounds).

Oysters harvested totalled 2,801,258 pounds valued at close to \$370,697. This compared with other three million pounds landed in 1963 and an estimated value of \$385,000.

Clams, scallops, quahogs, etc. brought a harvest of 775,113 pounds valued at \$68,867.

Pelagic and estuarial fish (herring, mackerel) landed totalled 8,177,926 pounds with a landed value of \$268,461. Groundfish landed just passed the 21 million pound mark. Value was placed at \$702,621.

The amount of Irish moss harvested was down in both poundage and value for a second year in a row. It was estimated at 7,123,340 pounds with a value of \$108,131. In 1963, 10.5 million pounds was harvested and the value was \$162,000.

The department under the Hon. Leo Rossiter conducted a number of courses, during the year, to improve the efficiency of fishermen.

The minister and deputy minister, Eugene Gorman, are looking forward to the expansion program now taking place in the industry.

Twenty draggers operated out of Souris last year. Two were of steel construction. Three others are under construction for Gulf Garden Foods at Georgetown.

It is estimated that close to \$4,000,000 is invested in boats and equipment by Island fishermen who in numbers total nearly 3,500. About 42 per cent of the fishermen population is concentrated in Kings County, 37 per cent in Prince County and the remainder in Queens County.

LOAN BOARD

Playing an important role in the development of the fisheries in the province is the Fishermen's Loan Board. The board operates under the authority of the Re-establishment Assistance Act.

During the fiscal year ending March 31, 1964, two steel stern trawlers were under construction by Bathurst Marine Ltd. These were completed in May and July. The board also made

available to March 31, 1964, small loans totalling \$43,475.

The board makes loans to fishermen only, for the purchase of boats and engines. These have been made on a 50 per cent basis, at an interest rate of four per cent. Terms are granted up to five years in the case of new shore boats and up to three years in the case of new engines. Loans are not granted on used engines. Ear boats built under the Canadian Steamship Regulations, such as draggers, longer terms are granted. Since the act and regulations were devised to assist needy fishermen, and were not intended to displace normal banking relations, all applications carry the fishermen's statement that he is unable to build or purchase without this financial assistance from the Loan Board.

Members of the board include A. Walthea Gaudet, Charlottetown, chairman; John O'Connor, Charlottetown, secretary; James E. Burden, Charlottetown; Harvey Hutt, Alberton; Arthur Bruce, east Baltic; Allistair Stewart, Georgetown; John McNeill, Murray Harbour; Ulric Poirier, Montserrat.

Francis Campbell is inspector and fieldman for the board, while John W. White is collector.

COSTS INCREASING

Commission probes education system

The highlight in the education field in the province during the past year is the report of a royal commission which recommended the establishment of a university of Prince Edward Island.

Station relocated

During the summer of 1964 it became apparent that the old Canadian National Railway Station situated at the head of the Railway Wharf in Georgetown would have to be dismantled and a new station opened on another location. This was necessitated by the construction of the new Gulf Gardens Food Plant at the Railway Wharf site.

In mid-summer a crew of CNR workmen began the renovation of the former Bunk House Building in preparation for converting it to a suitable station house. Culverts to connect the new site with Grafton Street were laid and a very considerable amount of fill was hauled on the location and grading done.

The building was completely renovated. Work was carried out on the sills and foundation, and in the interior partitions were re-arranged and the necessary office facilities installed. Painting and other work was carried out.

Eventually the old Station House was torn down and the newly renovated building came into use to serve the public.

After a six-month study of higher education, the three-man commission delivered its report to the provincial government.

The commission recommended that the boards of governors of Prince of Wales College and St. Dunstan's University, after sufficient study of their own interests and their particular needs, proceed to initiate planning with the provincial government in the setting up of an Island university which would have the two present institutions as "components."

The university would grant degrees but Prince of Wales College and St. Dunstan's University would remain individual entities within the proposed university.

The commission pretty well left it up to the government to appropriate money for the cost of the new educational institution.

WAY PAVED

The way was paved at the last session of the Legislature for Prince of Wales to become a university by passing the Prince of Wales College Act 1964. This act elevates the college to a university.

In the current fiscal year, the department of education is spending a record amount on education.

Dr. George Dewar, department minister, said in the 1964-65 fiscal year approximately \$6,000,000 has been budgeted on education. "This is almost \$1,000,000 higher than the previous year," he said.

Dr. Dewar pointed out that educational costs continue to rise. "The number of students is increasing," he said, "stu-

dents tend to stay in school longer and teachers are getting better salaries. Inflation since 1940 has doubled the cost of education."

"In this province there has been a considerable increase in costs. I don't think we are spending out of proportion for education."

TIMES CHANGE

The minister pointed out that in 1900, some 40 per cent of the provincial budget was spent on education, the same percentage was spent in 1925, but by 1950 it had dropped to 10 per cent. It rose to 16 per cent in 1964 and in the next fiscal year will be an estimated 22 per cent.

"While there has been a large increase in spending on education," he said, "there has also been a large increase in the spending of other government departments."

Welfare costs from 1959 to 1964 had increased by 222 per cent; health by 280 per cent, while spending on education increased by 250 per cent.

Some people may say that spending on education is excessive, but in comparison with other provinces we are modest, conservative and economical."

According to Dr. Dewar, the cost of educating a student in this province is \$131 annually, while it is \$173 in New Brunswick, \$280 in Ontario and \$348 in Alberta.

REGIONAL HIGHS

A tremendous expansion has taken place in the regional high school system of the province, Dr. Dewar said. He said "in 1961 there were 1000 students in these schools. In 1962, there were 2,000. In 1963, there were

3,000. and in the 1964 there were 4,000.

There are now 15 regional high school units in the province and the latest to be constructed was the Charlottetown Rural Regional High School, on the site of the Provincial Vocational Institute, near Charlottetown. A similar regional system for

the elementary schools of the province is expected to be developed over the next few years. Dr. Dewar indicated a few weeks ago that he will introduce legislation at the current session of the legislature, designed to pave the way for consolidation of some elementary school districts.

TO MEET IN MONTREAL

NEW DELHI (Reuters)—The International Chamber of Commerce will hold its 21st congress in Montreal in May, 1967, it announced Saturday. The chamber's five-day international congress ended here Friday.

Kennedy's

Fashionable Styling Since 1939

Since 1939 we have been proud to bring the latest fashions to the ladies of Prince Edward Island. As one of the oldest ladies' wear stores on the Island, we feel that the quality and the price of our merchandise meets with your approval. We thank you for this patronage over the past 26 years, and hope we will continue to be of service to you in the future.

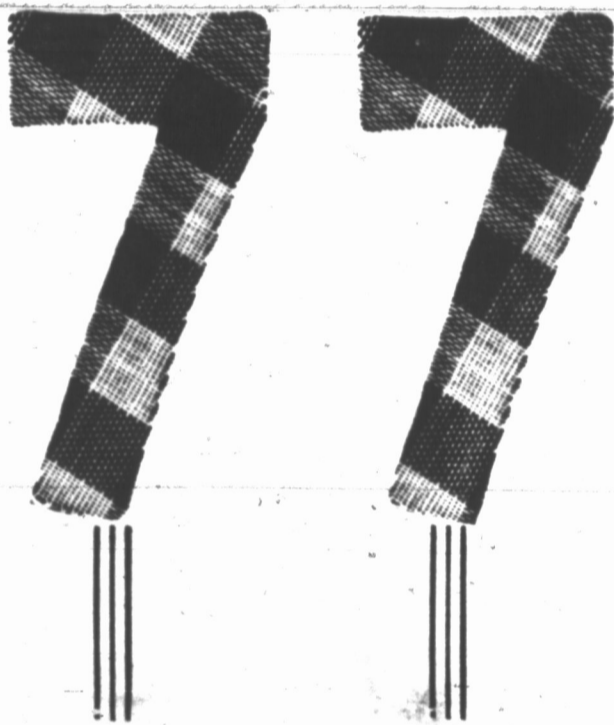


KENNEDY'S

Ladies Wear

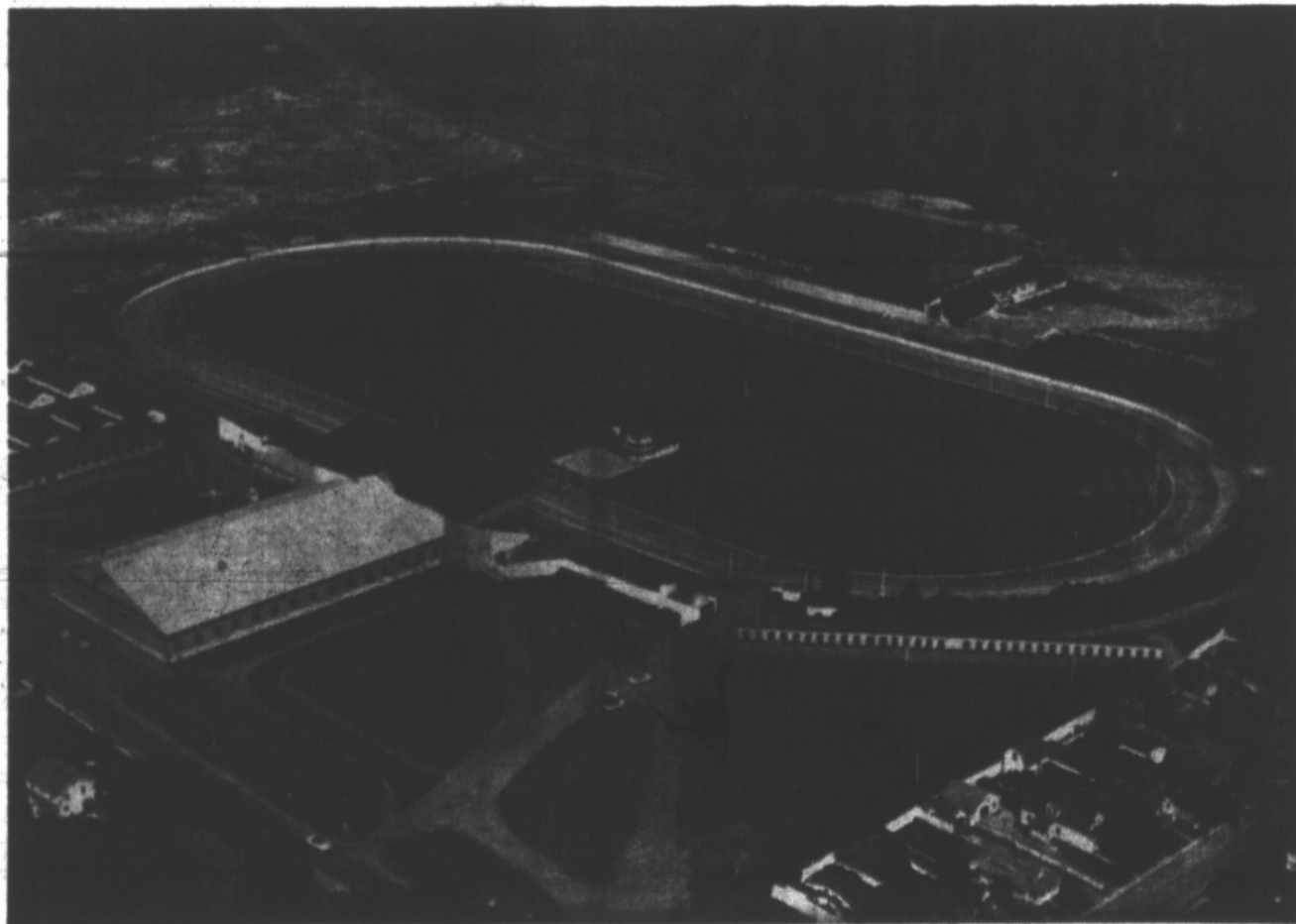
Queen St.

Ch'town



YEARS

of continued progress in the promotion of livestock & race horses



Prince Edward Island

KNOWN AS THE

Kentucky of Canada

The Charlottetown Driving Park races the largest number of events, eleven in one week which is a record number of race meets in one week under U.S.T.A. Jurisdiction.

Old Home Week Aug. 16 to 21

Charlottetown Driving Park

and

Provincial Exhibition Assn.

CHARLOTTETOWN

P.E.I.

Fresh arrivals!

a wide selection of spring Suits and Dresses

Dresses and suits, in the mood for a fashionable spring are yours at the Gloria Ladies' Wear. Sparkling new styles designed to uplift your spirits and put you in a spring mood.

DRESSES

Basic sheaths, two-piece and three-piece costumes, new low-belted and high-waisted styles, plus many more in an outstanding collection!

SUITS

A collection well-suited to spring! Trim two-piece and three-piece wool boucles and sheer wools in sunny solids or checks.

GLORIA LADIES WEAR

"Where Fashionable Women Shop"

Great George St.

Charlottetown

