

**ORIN CARVER LEADS BY 7 POINTS**

**Merrill Pineau Moving Up In I.S.H.L. Scoring Race**

Although Parkdale's centreman Orin Carver remains at the top of the Island Hockey League scoring this morning it is becoming increasingly apparent that he will have a real fight on his hands as the B. Y. C. youthful twinger Merrill Pineau moves ahead at a terrific clip.

Carver has been the leader since the early games of the season and never has been seriously threatened for scoring honors until Pineau began to make strides in seven-league boots and is now only 7 points behind in second place.

Pineau's drive took him ahead of Carver in the goal-scoring derby and he now has a three-goal lead in that department with 20 to 26 for Carver.

Carver's league-leading total is 46 points on 26 goals and 20 assists. Pineau has 10 assists to go along with his 20 goals for 30 points.

**WHITLOCK MOVING**

Another player moving rapidly up in the scoring statistics is Roy (Buck) Whitlock, a veteran of many senior hockey seasons. Whitlock has played only 6 games

with the B. Y. C. but in those games has scored 9 goals and helped out on 20 others to run his total to 29 points, which is good for a tie for sixth place with Montague's Billy Hughes and Parkdale's Allie Carver.

Apps Arsenault holds down third place in the standings behind Pineau with 31 points on 14 goals and 17 assists. Bubby Dowling and teammate Dick Carroll of Montague are tied for fourth with 30 points.

Summerside's top scorer is Coke Grady with 21 points. Grady has 17 goals and 25 assists but because Aces' goals and assists are worth only 1/2 point Grady gets credit for only 21 points. His total of 25 assists is tops in the loop.

Frank Roper remains to top netminder with an average of 5.00, having allowed 60 goals in 12 games but it is turning into a ding-dong race for goaltending honors as only 47 percentage points separate Roper, Doyle, Earl Shepherd and Thane Mann. The B. Y. C. total of 5.08 is the league's best.

**SPORTS TRAIL**

**There's A Vivid Contrast In Careers Of Two Pitchers**

By WHITNEY MARTIN

NEW YORK (AP)—Sal Maglie has just signed a contract for a reported \$30,000 as a reward for his tremendous comeback with Brooklyn Dodgers last year.

Last April Max Lanier failed in his bid for a contract with Philadelphia Phillies and dropped from sight as far as the major leagues were concerned.

There is a vivid contrast in the careers of these two pitchers. Both were involved in the Mexican misadventure in the mid-forties when more than a score of major leaguers were lured south of the border.

At the time Lanier was the hottest of the two. The stocky southpaw was the fair-haired boy of the St. Louis Cardinal pitching staff. He had pitched in three world series and had a 6-0 record and a 1.93 earned run average in 1946 before he jumped the club.

Maglie, two years younger, had an indifferent record.

When the Mexican bubble burst both were at loose ends. Lanier took to barnstorming, pitching for pickup clubs in parks for a fee.

When both finally were reinstated the situation as far as their respective abilities was concerned was reversed.

Lanier came back to the Cardinals in 1949, pitching in 15 games and winning five while losing four. The once great wing had lost its golden touch.

In December, 1951, he went to the Giants but the New York club asked waivers on him in May, 1953. He hooked on with St. Louis Browns but even that hard-pressed outfit found him wanting.

The personable fellow's trail led

downward. He went to Shreveport and thence to St. Petersburg and Beaumont, never giving up hope of returning to the big show.

Maglie came back from Mexico a great pitcher, stronger and wiser. His first year was a bell-ringer. That was in 1950, and his 18-4 record was only a prelude.

The remainder of his story is well-publicized history — including how he was sent to Cleveland in July, 1955, for \$25,000, signed by the Dodgers in May last year, and then staged his phenomenal comeback.

Maglie and Lanier, a study in contrast.



**ANYONE FOR BALLET?**

Basketball court in New York takes on the air of a ballet-setting as Big Bill Russell (No. 6) of the Boston Celtics goes way up to try for a rebound, assisted ably in the dance act by Richie Guerin of New York Knicks.

**Claims Golf Ass'n Demands \$15,000 To Stage Can. Open**

EDMONTON (CP)—Hal Pawson, Edmonton Journal sports editor, said in his column Monday that the Royal Canadian Golf Association has demanded \$15,000 "free and clear" from the Edmonton Mayfair Golf Club for the right to stage the 1958 Canadian Open on its course.

Pawson said the club told the RCGA it could not agree to the "guarantee."

He said the RCGA admitted it had never asked before for the guarantee.

At Toronto, C. E. Robbie Robinson, secretary-treasurer and manager of the RCGA, said it was "substantially correct" to say the association had asked for the \$15,000 guarantee.

"The pros have indicated they are not anxious to go to Edmonton because of the long distance involved between tournaments and, because we wouldn't get any number to attend, we are faced with the possibility of a slim gathering," he added. He said, however, this was a matter for the RCGA board of governors to decide at the association's annual meeting in Montreal next month.

Robinson said the 1958 St. Paul Open is tentatively scheduled for Aug. 29-31, the Canadian Open at Edmonton Aug. 27-30 and the B.C. Open at Vancouver Sept. 2-4.

"Pros travel to tournaments by automobile and to take these three in means much more than a day's travel between each championship," Robinson said. "Four or five years ago when there was

the odd tournament here and there the pros didn't think about traveling any great distance. But now, with lucrative tournaments every week, they are reluctant to put themselves out."

**Say Moons Will Last Only Weeks**

SYDNEY (CP)—Australian scientists are confident the world's first earth satellites will have a short life — not more than a few weeks.

The United States plans to launch 12 such satellites, beginning in July this year, and some American scientists hope the satellites will stay up long enough to serve as space laboratories, reporting automatically by radio.

Experts at the radio research laboratories of the Commonwealth Scientific and Industrial Research Organization, among the world's leaders in research in the upper atmosphere by radio waves, are prepared to stake their reputations that the Americans are wrong.

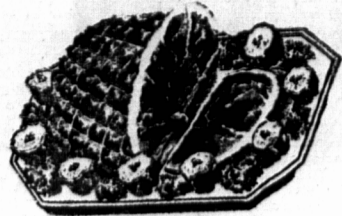
Dr. D. F. Martyn, chief of the Australian project, said: "Our work suggests that the satellites will stay up for a few weeks only. There is more air up there than the Americans think. The satellites will be slowed down by bombardment with air atoms."

**NORTHERN ROUTE**

Traffic in cars travelling the Alaska Highway has increased 50 per cent in the past eight years,

**100 WANT SEAT**

LEAMINGTON, England (Reuters)—A Conservative party selection committee is studying a list of more than 100 possible candidates for Sir Anthony Eden's vacant seat in Parliament.



**HAMS**  
PICNIC STYLE  
EXTRA SPECIAL  
PER POUND **49c**

**CHICKENS**  
**VEAL ROASTS**

SAVE-to BEAT the BAND



**JANUARY JAMBOREE**  
of FAMOUS BRANDS



Have yourself a savings spree at our January Jamboree—for our low, low prices for famous brand foods make them the most popular numbers on the Thrift Parade! Yes famous brands are your best food buys—best for QUALITY... best for TASTE... best for ECONOMY! So, when you compare values—look once at price and the brand name twice. Then come to the CO-OP SUPER MARKET for famous brands at everyday low prices that help you save to beat the band.

**FISH DEPARTMENT**

- FRESH CHILLED **COD FILLETS . . lb. 23c**
- NEW SHIPMENT **SALT COD . . . lb. 35c**
- FRESH CHILLED **Haddock Fillets, lb. 33c**
- FRESH CHILLED **Halibut STEAKS lb. 43c**
- GALLON JAR—ABOUT 20—HEADS OFF **Pickled Herring GAL. 1.49**

**SCORING**

GP	G	A	Pts.
O. Carver (P)	13	26	46
Pineau (B)	11	20	39
Arsenault (M)	14	14	31
Dowling (M)	13	15	30
Carroll (M)	14	11	30
Hughes (M)	14	17	29
Whitlock (B)	6	9	29
A. Carver (P)	13	14	29
S. Carver (P)	12	14	26
J. Ready (B)	13	23	28
MacLure (M)	14	8	26
J. MacLeod (P)	14	13	25
C. Grady (S)	23	17	25
Howatt (B)	13	6	21
Dunn (P)	12	8	21
Hennessey (S)	23	17	20
V. Harris (S)	23	18	19
J. MacDonald (D)	8	7	18
Gallant (S)	23	17	15 1/2
Hurry (P)	12	5	10
L. Shepherd (B)	12	7	6
Davey (D)	6	8	5
Burke (B)	13	5	7
F. Shepherd (B)	13	5	7
Landry (M)	13	6	6

(Note: — Summerside goals and assists worth only 1/2 point.)

**LEADERS**

Standings: Parkdale, won 9, lost 4, ave. 602.

Points: Orin Carver, Parkdale, 46.

Goals: Merrill Pineau, B. Y. C., 29.

Assists: Coke Grady, Summerside, 25.

**GOALTENDERS**

GP	GA	Ave.
Doyle (B)	12	63 5.25
J. Shepherd (B)	1	3 3.00
B. Y. C. Total	13	66 5.08
Roper (P)	12	60 5.00
Jordan (P)	1	8 8.00
Parkdale Total	13	68 5.23
E. Shepherd (D)	8	43 5.38
Mann (S)	15	82 5.47
Simmonds (S)	8	55 6.88
Summerside Total	23	137 5.96
Dillon (M)	13	96 7.38
Jordan (M)	2	19 9.50
Montague Total	15	115 7.67

**STANDINGS**

GP	W	L	GF	GA	Ave.
Parkdale	13	9	4	68	6.92
S. Side	23	12	11	132	5.72
S. D. U.	8	4	4	48	4.50
B. Y. C.	13	6	7	81	6.62
Montague	15	8	15	115	7.67

**SPECIAL!**

**BLUE SURF**

**GIANT SIZE ONLY 75c**

**FRESH**

**DOZEN IN CARTON**

**GRADE "A" LARGE SIZE 39c**

**A REAL GOOD BUY**

**PURE SEVILLE MARMALADE**

**TROPICAL BRAND**

**FOUR POUND TINS ONLY 59c**

**SAVE 2c on LIFEBOUYS regular size**

**3 REGULAR SIZE FOR ONLY 29c**

**CORNED BEEF** OUR CURE **LB. 23c**  
SWEET PICKLED

- DEVON SLICED **BACON** 1 LB. PKG. **69c**
- SWEET PICKLED **NECK RIBS** PER LB. **17c**
- FRESH GROUND **HAMBURG** 2 LBS. **59c**
- ROUND—SIRLOIN—T-BONE **STEAKS** YOUR CHOICE **lb. 59c**

- FOR SOUPS AND STEWS **OX-TAILS** 2 LBS. **19c**
- FRESH TASTY **LAMB'S LIVER** **lb. 29c**
- MAPLE LEAF **BOLOGNA** SLICED **lb. 29c**
- IN PLASTIC BOWLS **ENGLISH BRAWN** ea. **37c**

**BUTTER** HEATHER NO. 1 **2 LBS. 1.23**  
CREAMERY

**MOLASSES** SILVER SEAL **3 QTS. 1.00**  
QUALITY

**SHOE POLISH** 2-IN-1 ALL COLOURS FREE APPLIER **2 TINS FOR 19c**

**MINCE MEAT** GAVEL'S HIGH QUALITY I.G.E. 24 OZ. JARS—EA. **33c**

**PORK & BEANS** CO-OP QUALITY 18 OZ. TINS **2 FOR 29c**

**PURE LARD** MAPLE LEAF 1 LB. PRINTS **2 FOR 39c**

**CUCUMBER SLICES** MRS. WHYTE'S 16 OZ. JARS **25c**

**SPIC & SPAN** SPECIAL 10c OFF DEAL THE ONCE OVER CLEANER **GIANT SIZE 73c**

**CHERRIES** RED PITTED LINCOLN BRAND—10 OZ. **2 FOR 29c**

**PEAS -- DEWKIST** SPECIAL PROCESS 18 OZ. TINS **2 FOR 33c**

**BABY CLAMS** DELICIOUS FOR CHOWDER DELICIA BRAND—TIN **29c**

**MEAT BALLS & GRAVY** PURITAN 18 OZ. TINS—EA. **33c**

**CHOCOLATE MILKO** JUST ADD WATER 14 OZ.—SPECIAL **39c**

**Ruth Martin's MENU SECRETS**

From LOOK Magazine's Dream Kitchen

**APPLE CRISP**

For a "different" dessert that looks as delicious as it tastes, LOOK suggests you try this Apple Crisp. Made with tart apples, applesauce, molasses, it has all that is "good for you" plus a tang to give even the most sophisticated gourmet the feeling of a perfect end-of-dinner taste.

Pare, core, 4-6 large tart apples (about 6 cups); cut into 1/4 slices. Mix together 1/2 cup sugar, 1/4 teaspoon nutmeg, 1/4 t salt, 1/4 teaspoon cinnamon. Alternate apples and sugar mixture in greased 6 x 10 x 2-inch casserole. Spoon 4 tablespoons molasses on top. Mix together: 1/4 cup sugar, 1 tablespoon molasses, 1/4 teaspoon cinnamon, 3 tablespoons butter, 1/2 cup sifted flour in a crumb consistency. Sprinkle evenly over casserole. Bake at 375° F. for 30 minutes. Serves 6.

**Next to A Farm—THE BEST PLACE To PICK PRODUCE**

**Potatoes** 10 LB. BAG NETTED GEMS **43c**

**Apples** FANCY—3 LB. BAG RALDWINS **59c**

**Cucumbers** LONG GREEN—EA. **19c**

**Sprouts** BRUSSEL LARGE BASKET—EA. **45c**

**Cabbage** NEW GREEN SPECIAL—LB. **08c**

**Radishes** PER BAG NEW—EA. **15c**

**Beets** GREEN TOPS **2 bun. 39c**

**NEW FLORIDA SWEET & JUICY ORANGES** **2 DOZ. IN BAG 79c**

NEWS AND VIEWS ON GROCERIES — CFCY THURSDAY — 11:00 a.m.

SOURIS — VERNON RIVER and CHARLOTTETOWN

**CO-OP SUPER MARKET**

AN ISLAND STORE OWNED BY ISLAND PEOPLE

**BIG ENOUGH TO SERVE YOU - NOT TOO BIG TO APPRECIATE YOU**

FREE DELIVERY • PHONE 8557 • FREE CUSTOMER PARKING