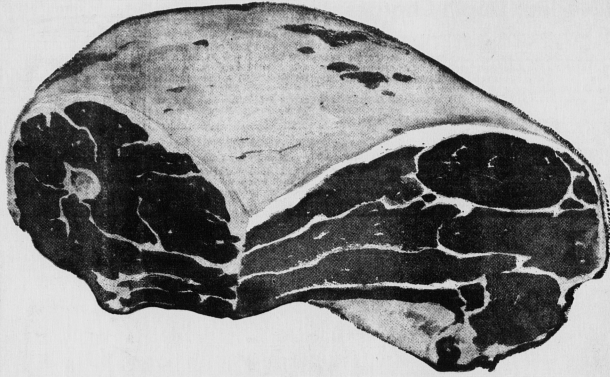




# LOW, LOW PRICES

Sale Dates  
JANUARY  
8th - 9th - 10th -  
11th

in every aisle



This is rich, full flavored Shoulder Roast Beef, specially selected from grain fed cattle. It's carefully trimmed and specially priced to give you the most good eating for your meat money. It's great and a great value, too!

SHOULDER ROAST OF  
**BEEF** lb. **49<sup>c</sup>**

S. P. COTTAGE ROLL L.B. 59c | S. P. HOCKS L.B. 25c  
FRESH CORNED BEEF L.B. 35c | COD FILLETS . . . . 31c

KING COLE ORANGE PEKOE  
**TEA BAGS** 60 COUNT GAUZE **89<sup>c</sup>** | FRUITAL STRAWBERRY  
**JAM** 24 OZ. JAR **49<sup>c</sup>** | CHASE and SANBORNE  
**COFFEE** 1 LB. V.P. TINS **79<sup>c</sup>**

EXTRA SPECIAL  
ROBIN HOOD  
**CAKE MIX**  
2 POUCH PAK **29<sup>c</sup>**

SPECIAL  
**YORK PEARS**  
4 20 OZ. TINS FOR **1.00**

EXTRA SPECIAL  
CHRISTIE'S  
**MILK LUNCH**  
2 PKGS. FOR **49<sup>c</sup>**

Golden, Ripe  
**BANANAS**  
2 lbs. for **29<sup>c</sup>**

DEL MONTE PINEAPPLE & GRAPEFRUIT  
**JUICE** 48 OZ. TIN **49<sup>c</sup>**  
BUDGET WAX  
**PAPER** 100 FT. ROLL **31<sup>c</sup>**  
HEINZ BREAD & BUTTER  
**PICKLES** 32 OZ. JAR **39<sup>c</sup>**  
HEINZ TOMATO  
**SOUP** 2 10 OZ. TINS **27<sup>c</sup>**

QUICK CREAM OF  
**WHEAT** 28 OZ. BOX **33<sup>c</sup>**  
GEISHA BABY  
**CLAMS** 5 OZ. TIN **31<sup>c</sup>**  
MIR LIQUID  
**Detergent** 2 BTLS. FOR **89<sup>c</sup>**  
CONLEY'S  
**TOMATOES** 28 OZ. TIN **29<sup>c</sup>**

**CHERRY PIE**  
E. D. SMITH CHERRY  
**PIE FILLER**  
20 OZ. TIN **43<sup>c</sup>**  
JIFFY  
**PIE CRUST**  
18 OZ. PKG. **29<sup>c</sup>**

FIRM HEADS OF  
**CABBAGE** LB. **6<sup>c</sup>**  
ISLAND  
**CARROTS** 4 LBS. **35<sup>c</sup>**

Frozen Foods  
Perfection Grapefruit  
**ICE CREAM**  
BRICK **29<sup>c</sup>**  
McCAINS FRENCH  
**Fries** 2 LB. POLLY **49<sup>c</sup>**  
HY-LINER "IN BATTER"  
Haddock 14 OZ. **47<sup>c</sup>**

Lucky Dollar store  
**PARTNERS IN YOUR COMMUNITY**