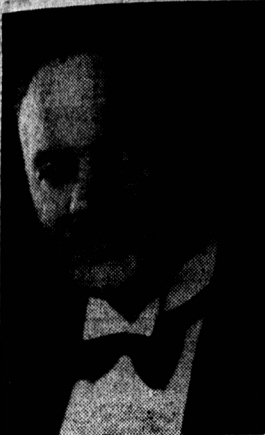


Hon. President



DR. L. W. SHAW
Deputy Minister and Director of Education

A Word of Encouragement

During the past few months I have had an opportunity to be present at a number of school openings and entertainments throughout the Province. One could not but mark the improvement in the singing and in the instrumental music. Indeed, it was a delight to listen to many of these people as they came before their audiences with confidence and ease.

A Message From King's County

Again, we are looking forward to a bigger and better Musical Festival. This year, as in previous years, music lovers in King's County regret the fact that we are falling short in our participation in this Feast of Music.

Programme

The Programme Committee endeavours to arrange the performance of the various classes at times most suitable to the participants. The classes for adult groups and individuals are placed in the evening sessions and, as far as possible, those for the younger performers in the morning and afternoon periods.

The order of the performance of entrants in each class will be decided by ballot. All sessions will begin promptly at time stated, so please be punctual.

Concerts of first prize winners will be arranged for Friday and Saturday evenings. Programmes will be on sale a week previous to the Festival.

As in the past we wish to thank those advertisers who so generously support our Programme.

PRESTON BECK
Convener

Report on Syllabus 1951

An entirely new departure in our Music Festival Syllabus for 1951 is the inclusion of seven classes of Choral Reading and two classes of Folk Dancing. As this branch of Festival activity develops it will add interest and variety to our program.

Every School Group has this year as the last class in the section a unison chorus in which it is permissible to use all School Grades. Therefore the rule governing Grades used in the other Chorus of the section will be strictly enforced.

Attention is drawn to a new rule made necessary by new school buildings not yet used to capacity. Rule 28. Any four-roomed school with an enrollment of less than 80 pupils may for Festival purposes use the sections given for group designated as "Three and Two Room Schools".

MRS. J. P. LANTZ

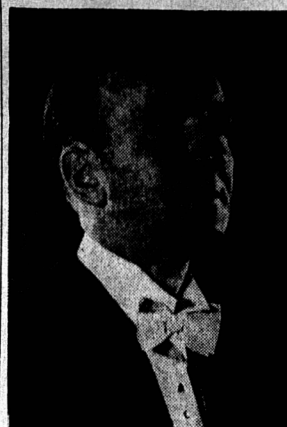
tion in homes, schools and other organizations. Let us hope that from this interest will grow activity, and that this coming year will show a marked increase in competent teachers for rural communities.

To all those responsible for the success of the Festivals, we extend our appreciation; and to all participants we wish the very best of luck.

MRS. RALPH BECK
Vice Pres., King's County

Musical Festival Association

Adjudicator



CLAYTON HARE

Conductor of the Calgary Symphony. Examiner, University of Saskatchewan.

Examiner, Diploma Board, University of Manitoba. Member of the Canadian Music Council.

Recent adjudicator (last year) at Ottawa, Regina and Saskatoon and again this year at Ottawa.

Appeared with his wife, Dorothy Swetnam (celebrated pianist) in concert recitals in Bermuda, Montreal, Toronto and C.B.C. Distinguished Artist series.

Teacher of Betty Jean Hagen and Francis Chaplin for some years.

Well known locally as head of Mt. A. Conservatory String Dept., 1939-1946.

Also appeared twice before the King and Queen during a seven year stay in London (last time 1939).

Refresher Course

The policy of the Refresher Course Committee, is still that of providing individual instruction, in the teaching of festival music, at the time and place best suited to the applicant. A notice to this effect was published in the local papers some time ago. This offer is open to teachers who are preparing entrants for participation in the Festival, and has proved beneficial to those who have availed themselves of the privilege so far.

Further applications would be welcome, and should be directed to: MRS. V. M. HUDSON
Convener
Parkdale.

A Message From Prince County

"Make a large place in your life for Music and it will bring you a priceless reward".

As we look forward in anticipation to the Sixth Annual Musical Festival, we would remind the citizens of Prince County that it is the duty and privilege of all to become a member of the Association.

Encourage the participants and the teachers in your community by helping with the many and varied details of organization which are necessary in order to provide transportation for the increasing numbers taking part. No greater good fortune can befall children than to live in a community where the richest educational opportunities are supplied.

Give as many as possible the chance to enjoy the advantages offered by the Musical Festival.

MRS. ALLISON MacLEAN
Vice President, Prince County.

Adjudicator



JOHN F. WEATHERSEED, F.R.O.C.

One of Canada's leading musicians, known from coast to coast as an examiner, lecturer and organizer. English by birth. Coming to Canada occupied positions in Winnipeg and St. Catharines, Ontario. For twenty years organist and choir master St. George's Anglican Church, Montreal.

As an adjudicator is well known for his kindly advice to students, his sense of humour coupled with erudition never fails to interest an audience. Familiar to many thousands in Ontario and the neighbouring States as director of the Robert Simpson Carol Choir during Christmas week.

Membership Committee

The membership of the Prince Edward Island Musical Festival Association has steadily increased year by year, and at the annual meeting held last June we were pleased to report it had reached a total of 406. However, the continued support of the general public is needed. We trust that all former memberships will be renewed in 1951 and many new ones added to enable this splendid organization to function successfully.

May we draw your attention to Page 18 in the 1951 Syllabus. You will find there complete information as to how you may become a member and to whom you may forward your application.

During Festival Week representatives of the Membership Committee will be at Prince of Wales College where they will be glad to renew former memberships and receive applications for new group and individual memberships.

Let us all support and encourage the Association in every way we can, and the best way you can do this is by becoming a member.

MRS. HARPER MacNEILL
Convener.

Scholarship Committee Musical Festival

The Scholarship Committee is pleased to report a hearty response to letters sent out to former contributors, and personal contacts with prospective donors. A goodly sum has already been realized and more donations are coming in almost daily. To all these public spirited citizens and organizations we extend our grateful thanks.

This year we hope by grouping the classes to make it possible that every entrant in the Festival will have a chance at winning a scholarship. These groupings and awards will be published in the program.

Scholarships will not be outright cash donations but will be in the form of Letters of Credit for the furtherance of musical education.

The Committee offers one hundred (\$100) dollars to a rural teacher of music in each of the three Counties of the Province to be used toward expenses in attending a course of music at a Summer School or for advanced tuition elsewhere. The recipient must contract to teach music for at least one year following the award in the County they represent.

Applications for these must be in the hands of this Committee by May 1, 1951.

MRS. J. A. LAWSON
Convener.

Secretary



MRS. EDWIN COOK

As Secretary of the P.E.I. Musical Festival Association and therefore the person to whom your entry or entries to the Festival will be sent, I would like, with your cooperation, to be able to turn over to our Program Committee a list prepared with as few errors as possible. To help in this would all entrants check the following:

That the Class number and Test Piece correspond.

That you are entering the correct class for your age (where age limit is set).

That you have enclosed your entry fee.

That in classes where test piece is "Own Selection" you have given the name and composer of the piece selected. An extra copy of such piece must be forwarded to me before the Festival, for the use of the Adjudicator.

That in all classes and A and B test pieces, both pieces be listed on entry form and both are to be performed.

That in the case of duets both names be listed on the entry form or that two forms be fastened securely together.

In short, by reading carefully the Rules and Regulations on page 2 and 3 of the Syllabus before completing your entry form, I feel sure unnecessary mistakes can be avoided and you will be assisting in no small way towards a well organized and successful Festival.

To all competitors I wish you sincerely the reward your efforts so well deserve.

Sincerely yours,
MARY F. COOK, Secretary.

Music is well said to be the speech of Angels. —Carlyle

Government Aid For Instruction in Music

The Prince Edward Island Music Festival Association, along with its sister organizations—the Drama Festival Association and the Arts and Crafts Guild, is assisted in its work through annual grants provided by the Provincial Government. This additional revenue enables the Association, through its Percentage Allotment Committee, to assist rural districts in providing instruction in music in their schools. Since encouragement by way of financial aid has been offered, there has been each year an increase in the number of districts which have provided musical training for the children in their schools. The Provincial Government is, therefore, to be commended for its foresight and generosity in fostering a most worthy and beneficial enterprise.

As a result of legislation passed at the 1949 session of the Legislative Assembly, it is now possible for the Department of Education to grant special licenses to persons with suitable qualifications in music and to pay them salaries commensurate with the time they devote to classroom instruction. Already several school circuits have been organized in the Province and other groups of districts are planning organization for the forthcoming school year.

The rebirth of an interest in music is heartening indeed, and it is encouraging to note that music is becoming more and more a part of the education of the children of the Province. It is impossible to estimate fully its effects in the training of young people. That music has a definite, educative value has been recognized by great statesmen and writers from the time of Plato onward. It was Plato who said: "Musical training is a more potent instrument than any other, because rhythm and harmony find their way into the secret places of the soul on which they mightily fasten, imparting grace, and making the soul graceful, of him who is rightly educated." In the nineteenth century Herbert Spencer remarked: "Music must rank as the highest of the fine arts—as the one which, more than any other, ministers to human welfare." And in our own day the late Franklin D. Roosevelt observed: "Music because of its ennobling influences, should be encouraged as a controlling force in the lives of men."

The Association has met with a considerable measure of success; the value of its work has been recognized by the Government of Prince Edward Island, from which the Association receives an annual grant of money to promote its work. Various societies, business firms, and private individuals also have made substantial contributions to its prize and scholarship funds. For all of this assistance the Association is deeply and sincerely grateful.

I trust that we shall all strive to make this Festival of 1951 the best yet. Give it your fullest support in every way you can—join the Association, attend the sessions of the Festival, see that your children have a part in it, take part in it yourself.

M. MacKENZIE
Department of Education.

So just, so small, yet in so sweet a note
It seemed the music melted in the throat.
—John Dryden.

Now the rich stream of music winds along
Deep, majestic, smooth and strong.
—Thomas Gray.

President



DR. G. D. STEEL

Again the Prince Edward Island Musical Festival Association is completing plans for the Annual Festival to be held in Charlottetown, April 30th to May 5th. The Association feels that this Festival is your Festival, for the Musical Festival Association had its beginning not in some Government office, but in the hearts and minds of parents, members of Women's Institutes, etc., who felt that more should be done to encourage the teaching of music in the schools, and to arouse interest in music throughout the Province in people of all walks of life. These Festivals are intended to bring together music-loving and music-making people from the whole Province. Here in friendly competition and with the helpful criticism of qualified adjudicators, they receive stimulus and inspiration to continue their musical studies and thus add to their appreciation of the work of others.

The Association has met with a considerable measure of success; the value of its work has been recognized by the Government of Prince Edward Island, from which the Association receives an annual grant of money to promote its work. Various societies, business firms, and private individuals also have made substantial contributions to its prize and scholarship funds. For all of this assistance the Association is deeply and sincerely grateful.

I trust that we shall all strive to make this Festival of 1951 the best yet. Give it your fullest support in every way you can—join the Association, attend the sessions of the Festival, see that your children have a part in it, take part in it yourself.

G. D. STEEL
President, Prince Edward Island Musical Festival Association.

Yours for a good time with music.

Yea music is the Prophet's art
Among the gifts that God hath sent
One of the most magnificent.
—Longfellow.



And music, too—dear music! that can touch
Beyond all else the soul that loves it much—
Now heard far off, so far as But to seem
Like the faint, exquisite music of a dream.
—Thomas Moore



Prince Edward Island Musical Festival Association

THE MUSICAL FESTIVAL

WILL BE HELD

April 30th, May 1st, 2nd, 3rd, 4th and 5th

ENTRIES CLOSE MARCH 15th

This Is Your Festival -- Get Your Entries In Now And Enjoy By Participating

If You Are Not A Member Of The Association Join Now

This Advertisement is generously sponsored by:

LePAGE SHOE CO. LTD.

PURE MILK CO. LTD.

Henderson & Cudmore Men's Wear

Clarke Fruit Co. Ltd., Wholesale Fruit

Carvell Bros. Ltd., Wholesale Groceries

Membership In Association

The fee for Life Members is \$25.00, for Group Membership \$5.00, and for Individual Members \$1.00 a year. All memberships are due one year from the date you join. By joining in a group you have the privilege of naming five representatives from your organization to attend and vote at the Annual Meeting in June, and all general meetings held throughout the year. All applications for membership received up until March 15th will be printed in the 1951 Festival Programme.