

Re-opening Today of Burhoe's Service Station

Best Wishes for **SUCCESS**

CONGRATULATIONS TO

WALTER BURHOE

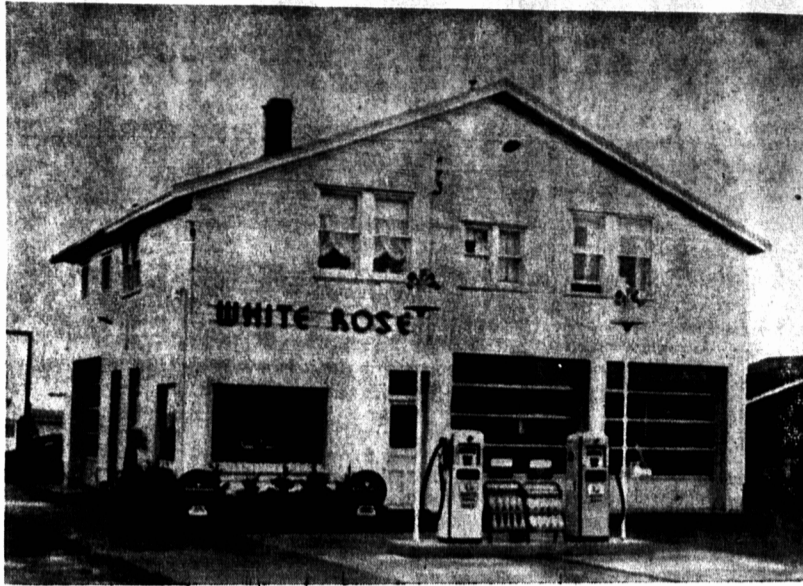
ON THE OCCASION OF THE
RE-OPENING OF HIS NEW

WHITE ROSE SERVICE STATION

WE ARE PROUD TO HAVE BEEN
THE GENERAL CONTRACTORS
FOR THIS NEW SERVICE STATION

CHARLES ADAMS

GENERAL CONTRACTORS
CHARLOTTETOWN



The old axiom that "Nothing succeeds like success" can well be applied to Walter Burhoe who today reopens his modernized White Rose Service Station situated near the railway tracks on Longworth Avenue. Mr. Burhoe has completely renovated his Canadian Oil Companies Ltd. White Rose Station. The interior has been enlarged and new equipment added while the exterior has been given a "New Look" and a resulting attractive appearance. Some of the more striking improvements have been made in the service department of the station where space has been provided for the handling of five cars at one time. The mechanical section has all the latest equipment including a modern car hoist and grease pit.

CONGRATULATIONS

TO

WALTER BURHOE

ON THE RE-OPENING OF HIS
WHITE ROSE SERVICE STATION

THE FOUNDATION AND FLOORS OF THE RENOVATED
SERVICE STATION WERE LAID BY

LARTER BROS.

SPECIALIZING IN
CONCRETE WORK

MANUFACTURING CONCRETE BLOCKS, CONCRETE SEWER PIPE,
CONCRETE BRICK.

CONGRATULATIONS

TO

WALTER BURHOE

YOU HAVE REASON TO BE PROUD AND MAY
YOUR FUTURE BE A HAPPY ONE.

TANTON'S ACCESSORIES LTD.

152 GT. GEO. ST.

DIAL 3573



WALTER BURHOE

Walter Burhoe, the operator of Burhoe's renovated White Rose Service Station, has had eleven years experience in garage and service station work.

He spent four years in garages work before taking over the White Rose Service Station on Longworth Avenue where he has built up a steadily increasing business during the past seven years.

Located to one side of the mechanical department is the wash bay situated in a manner so as not to interfere in any way with mechanical work on other automobiles in the station.

Employees will enjoy working in the service department and patrons will be comfortable watching them especially in the cold weather for a modern overhead hot air heating system has been installed to heat the garage.

This overhead heating system
Continued on page 9

CONGRATULATIONS

WE WOULD LIKE TO EXTEND

OUR CONGRATULATIONS TO

WALTER BURHOE

ON THE OCCASION OF THE RE-OPENING OF HIS NEW WHITE ROSE SERVICE STATION.

THE HOT AIR CONDITIONING IN THIS BUILDING WAS DONE BY

Douglas Bros. & Jones Ltd.

155 Kent Et.

Dial 6565

OUR...

CONGRATULATIONS

AND BEST WISHES

TO...

WALTER BURHOE

ON THE RE-MODELLING
OF HIS

WHITE ROSE SERVICE STATION

THE ELECTRICAL SUPPLIES FOR THIS

BUILDING WERE PROVIDED BY

JOHN O. GOOD

WINSLOE

ROBINSON SUPPLIES LTD.

ARE HAPPY TO BE ASSOCIATED WITH WALTER BURHOE
AND TAKE THIS OPPORTUNITY TO EXTEND TO HIM—

CONGRATULATIONS

AND

BEST WISHES

ON THE RE-OPENING OF HIS
WHITE ROSE SERVICE STATION

THE BEST TREAD
FOR THE WORST
WEATHER

EXTRA TRACTION!
GREATER SAFETY!
B. F. GOODRICH



TRAILMAKER TRACTION TIRES

DISTRIBUTED IN THE PROVINCE BY

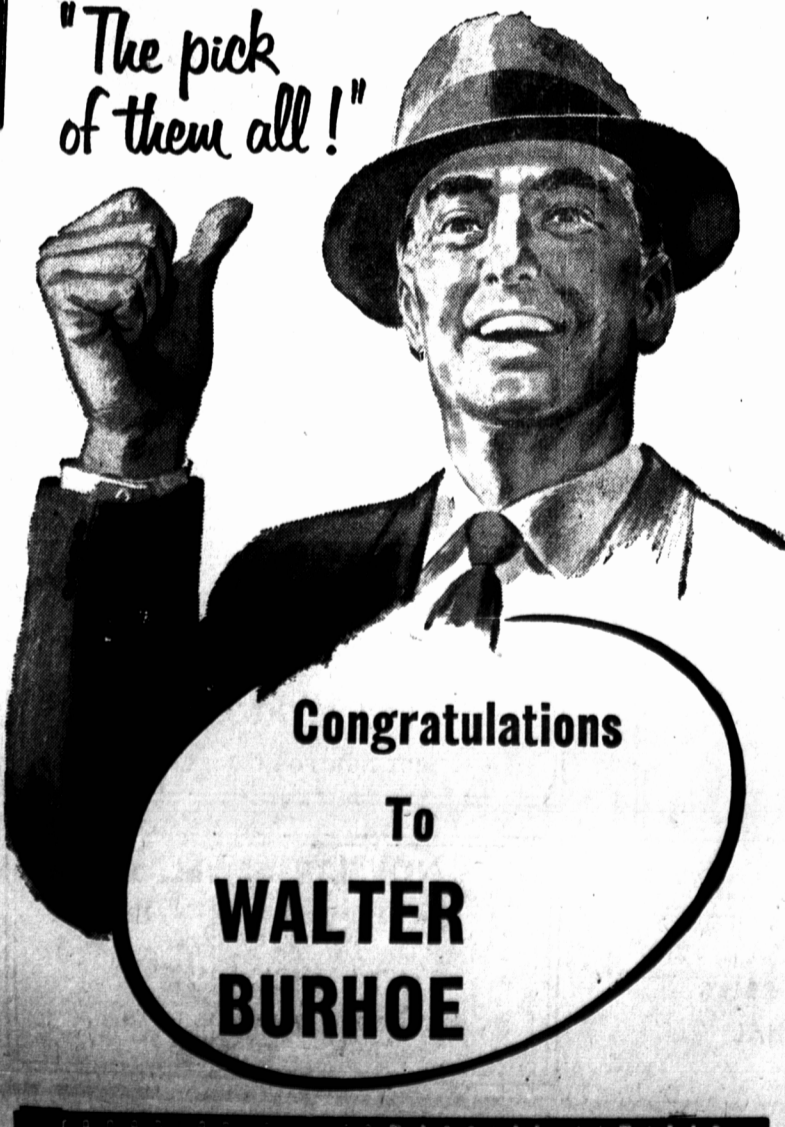
ROBINSON SUPPLIES LTD.



WHITE ROSE

GASOLINES

"The pick of them all!"



Grand Opening
Today and Saturday

You are cordially invited to attend the Grand Opening of Walter Burhoe's White Rose Service Station, Longworth Avenue, Charlottetown, on Friday, October 28th and Saturday, October 29th.

OPENING SPECIAL (OCTOBER 28th and 29th)

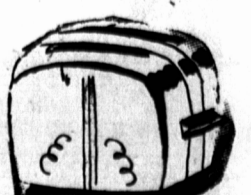
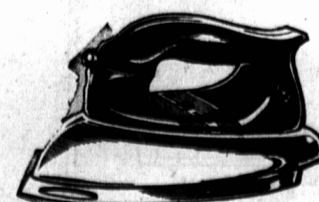
1 Free Chassis Lubrication Coupon (which can be redeemed at any time) with the purchase of \$3.00 worth of gasoline.

GIFTS FOR EVERYONE

TELEVISION SET

FEATHERWEIGHT IRON

POP-UP TOASTER



Drawing for TV set — Pop-Up Toaster — Featherweight Iron. Tickets to be given with every purchase. Drawing to take place November 14.

The public are cordially invited to attend the Grand Opening and inspect the modern facilities offered the travelling public. Free coffee will be served during afternoons and evenings.

GOODRICH TIRES AND TUBES — ACCESSORIES

WALTER BURHOE'S

WHITE ROSE SERVICE STATION

LONGWORTH AVE.

CHARLOTTETOWN