

Chemicals bring insect predators

KENTVILLE, N.S. — Chemicals can now be used to control the numbers of insects that prey on apple orchard pests. This means that the orchardist can gain better natural control of pests by allowing their enemies to survive.

K. H. Sanford of the CDA Research Station here, says most of the 73 potential pests in the province's apple orchards are kept under control by predators and parasites. Only the apple maggot and a few other species require chemical control.

Annapolis Valley apple growers have, for the last 15 years, used a program which aims at giving control without upsetting the natural balance between pests and predators.

Mr. Sanford explains that such

chemicals that can be used in the delayed-dormant application against apple sucker, case bearers, bud moths and aphids with little effect on unhatched predators.

Some chemicals applied at dosages lower than normally recommended will control certain pests without killing any beneficial insects. Six to eight ounces per acre of DDT or Guthion controls winter moth, cankerworm and green fruit worms, and Malathion at the same rate is effective on a phytophagous mite that causes serious fruit injury in some orchards. Complete coverage at these lower dosages is essential for worthwhile results.

'NO NEWS TODAY'—BBC

LONDON (CP)—For perhaps the first time in history, a BBC news reader said "Here is the news," and found he had nothing to say. Eight minutes later announcer Sean Kelly interrupted a magazine program, to read a spare copy of the mislaid script.



JUNIOR FEMALE CHAMPION

This type Jersey heifer was junior female champion for E. A. Myers, Hazelbrook at the Provincial Exhibition in Charlottetown in 1964. Her name is Myersbrook Acme S. Fairy. At the halter is Percy Fraser, Cross Roads.

Processing qualities essential in berries

The volume of strawberries used by processors in Eastern Canada is increasing steadily. Though the grower usually receives a few cents less per quart for fruit sold to processors than for that sold to the fresh market, strawberries can be grown profitably in large acreages for the processing industry.

Processing also provides an outlet for undersized fruit and for overflows from the fresh market in years of high yields. At present, processors import more than half of the berries they use, most of them frozen. They would buy more locally if larger quantities of berries were available.

Not all varieties suitable for the fresh market are equally suitable for processing. For preparing most kinds of packs, berries should have:

- Bright - red surface and flesh. Easily removed hulls. Uniform, medium size. Ability to retain their shape. Firm, but tender texture. Good flavor. Little trimming waste.

Strawberries are processed for many kinds of packs:

- For frozen whole berries. Sugar is added at one pound to four pounds of fruit, at one to three, or at one to five, or no sugar is added.
- For frozen sliced berries. Sugar is added at one to four pounds per quart.
- For jams. Strawberry jam with pectin, commonly called "pectin jam," contains at least 32 per cent fruit — usually berries stored in bulk in sulphur dioxide. It may be artificially colored. Strawberry jam, commonly called "pure jam" contains at least 52 per cent fruit — either fresh or frozen berries; artificial coloring is not permitted.
- Strawberry ice cream. For fountain fruit, topping, pie filling and similar products.
- For canned whole berries in 45 per cent syrup.
- Each berry characteristic varies in importance with the kind of pack. For example, good surface color and ability to retain their shape are important in berries to be frozen whole, or to be canned or made into jam. On the other hand, color of the flesh is much more important than the surface color of berries to be sliced, chopped or pureed.
- Since coloring can be added to pectin jam, the fresh berries used can have less natural color

than those used in pure jam. The berries for pectin jam should be rather firm, since they must withstand bulk storage in sulphur dioxide as well as the jam-making operation. Firmer berries are also needed for jam made in open kettles. For strawberry ice cream, full-flavored berries with rich red flesh are wanted.

Most varieties are about equally satisfactory in size for processing. Erie and Catskill are often too large for some kinds of packs. Guardsman berries greatly in size according to growing conditions, especially soil moisture.

Rural justice was sometimes peculiar

Justice was sometimes rendered in a peculiar manner in remote parts of Prince Edward Island.

Take the "bull trial", for example, which is supposed to have taken place in St. George's, some 140 years ago.

A group of angry farmers were at their wit's end to know what to do about the common affair, because the bull had not been provided with an interpreter.

At last in despair, one farmer was bold enough to swear out a warrant for the bull's arrest. The law stepped in, captured the animal and led him to a large fir tree where the trial took place.

The evidence against the bull was strong indeed, but it took most of the day to settle the case. Layman lawyers pleaded pro and con, while tobacco chewing farmers sat about on the grass, a one-eyed J.P. was present to act as judge when the proper time would arrive to make his decision.

When a pro witness was called to the stand the bull let out a tremendous bellow which fairly rocked the ground. At last the jury pronounced their verdict: "Guilty from head to tail!"

A fine of \$10 was imposed and the prisoner must face death. But the judge had slipped up. He forgot that the bull was peniless.

That night the whole community ate a whole roasted bull and everyone had a gala time—that is, except one farmer, the bull's owner, who vowed the trial was unfair, because the bull had not been provided with an interpreter.

BUCKETS of WATER!



with **REDDY KILOWATT** as your **WATER BOY**

PROBLEM: Nobody on our farm likes pumping, lifting and lugging water. Yet, we need it for the livestock, poultry, crops and dozens of household uses.

SOLUTION: Let Reddy do it! There's nothing like the convenience of having running water on the farm—and there's no one that can handle the job quicker, better and more economically than Reddy Kilowatt.

MARITIME ELECTRIC Company Limited

Roast pork or rabbit, that is the question

Jerry was a farm hand who was not above taking things that didn't belong to him when the occasion arose. One day when he'd completed his chores on his boss' farm and was on his way to his own little shack some half a mile down the road, Jerry just recalled that he was out of meat. So he retraced his steps to the boss' place where he snatched a young porker right out of the pen.

By some evil chance the farmer missed the piglet soon after it had been taken, and immediately his suspicion fell on poor Jerry.

"Who's there?" asked the farm hand when one hour later he heard a loud knocking on the door.

"It's me," said the boss man, "open up. I want to see you about something very important."

"Go away," said Jerry. "I'm tired and I want to go to sleep. Besides, if people see you around my shack at this hour they're sure to gossip."

"Open up," said the farmer. "Or down comes the door. I won't stand for any more of your scheming."

Jerry reluctantly opened the door and without wasting further words the boss went over to the pan on the stove and lifted the cover. Then addressing his farm hand he asked, "What's cooking?"

"Rabbit," replied the now frightened Jerry. "You know how I like rabbits, boss?"

"I like rabbit too," said the farmer. "I'll have a helping right now. Hmm, it smells and tastes like pork. Now how do you account for that Jerry?"

"It's a new kind of meat," explained the other. "It's pork

HALL SPRING GREETINGS

fed up with a plugged mower?

here's real non-stop mowing-conditioning

Now you can make hay without getting off the tractor seat. With this new flail mower-conditioner which does the work of a mower and a hay conditioner, you get plug-free non-stop operation in all kinds of hay.

It's great in heavy, down and tangled hay which plugs sickle bar mowers. Where your mower won't go, this machine will!

Does speedy job of shredding stalks, cutting weeds, clipping pastures. Available in 7-ft. and 6 ft. models. Windrow attachment available.

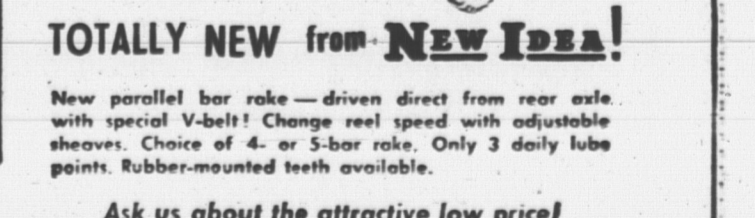


NEW IDEA FULL YEAR GUARANTEE

If there is anything in Cultivating Equipment you require, do not hesitate to get in touch with us. The same will apply to Hay and Harvesting Machinery throughout the year and please remember that we have expert service for all our Equipment. Our Parts Department is bulging at the seams with service parts. This alone is worthy of your consideration. Give us a call or see the Dealer who is showing the NEW IDEA sign nearest you.

QUIET RUNNING! CONSTANT SPEED!

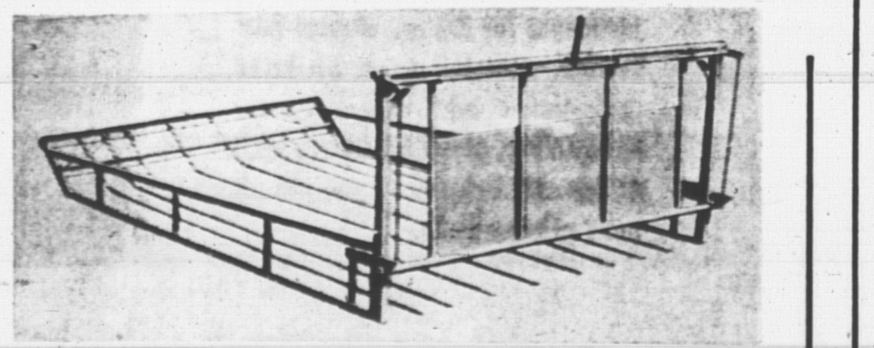
FIRST GROUND-DRIVEN RAKE WITH V-BELT DRIVE



TOTALLY NEW from NEW IDEA!

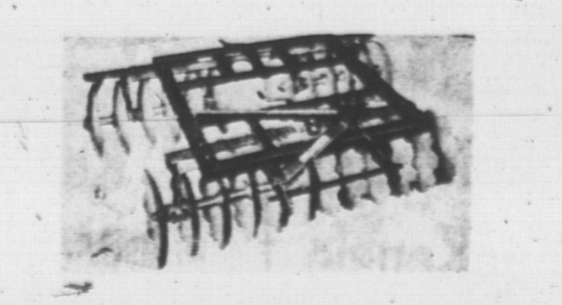
New parallel bar rake—driven direct from rear axle, with special V-belt! Change reel speed with adjustable sheaves. Choice of 4- or 5-bar rake. Only 3 daily lube points. Rubber-mounted teeth available.

Ask us about the attractive low price!



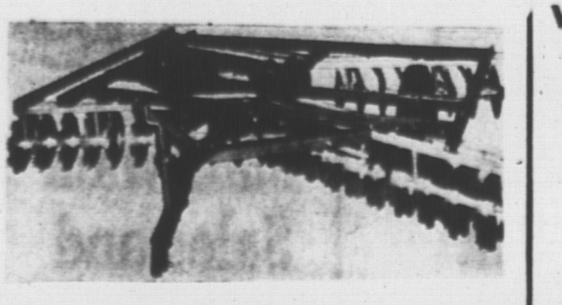
BALE BUNCHER

All steel, welded construction for fast, labour-saving bunching of hay, grain and straw bales. Overall size 6' wide by 9'6" long; easily tripped 36" high gate has positive locking action. Maximum capacity 10 bales. Easily dismantled for shipping or storage.



BURCH EZ-GO WHEEL TYPE DISC HARROW

Manufactured in 9 Sizes — 6 ft. 6 in., 7 ft. 10



GEM 2-ROW REAR MOUNTED CULTIVATORS

Watch for the New Idea Sign In Your Community

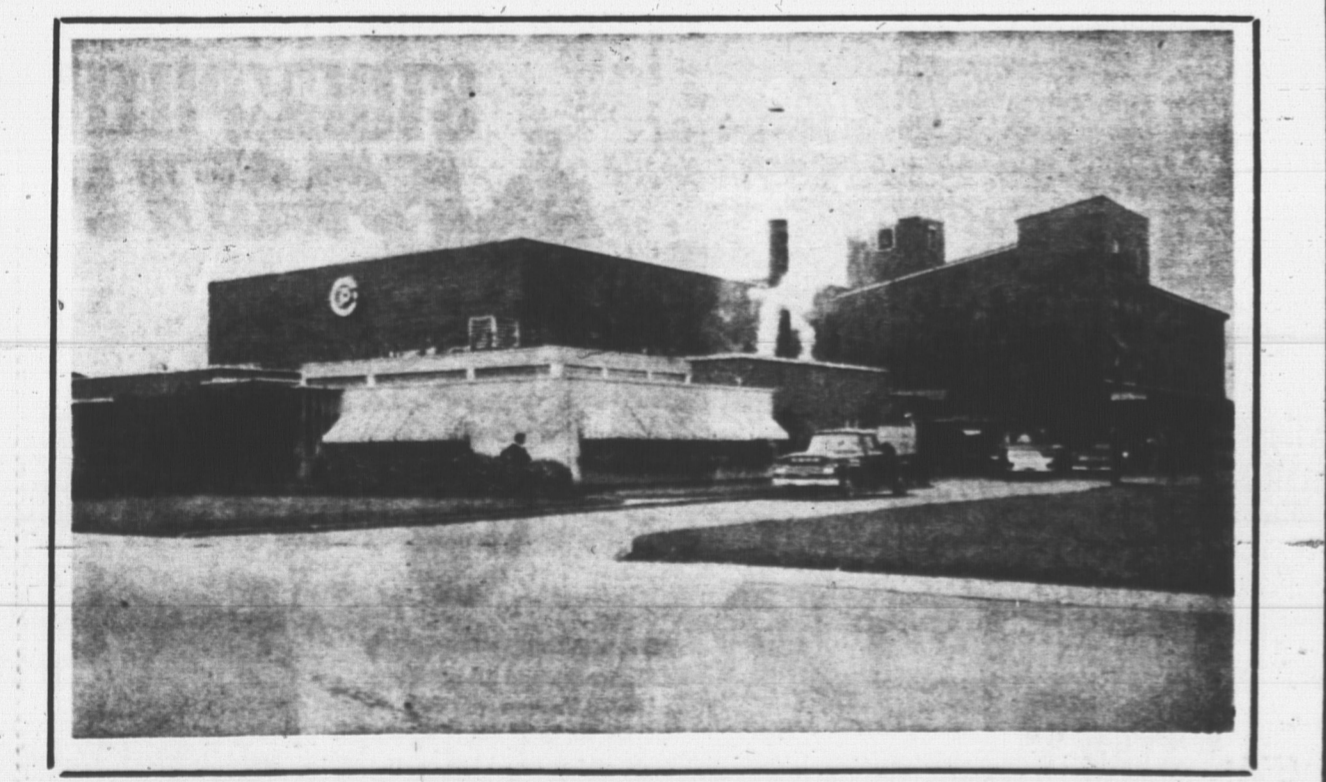
F. J. SHEA & Co.
St. Louis

GEORGE MacKAY
Harrington

RUSSELL CHING
Souris

McGOWAN'S LTD.
Kilmuir

CHARLES WILLIS and SON
O'Leary



Shown above is a picture of Canada Packers Charlottetown plant, conveniently located in the central part of the Province to best serve the needs of Island livestock producers.

By Shipping Your Hogs and Other Livestock To Us, You Are

- assuring yourself of highest possible returns
- patronizing home industry
- boosting Island economy
- creating more jobs for native Islanders

CANADA PACKERS LTD.

"An Island Market for Island Livestock"

CHARLOTTETOWN P. E. I.

HALL MFG. CO. LTD.
SUMMERSIDE P.E.I.