

CROWDED AREA
Java, an island of 50,000 square miles in Indonesia, has about 1,000 persons to the square mile.

THE SECRET OF LOB HOPE

What is the magic touch that enables Bob Hope to hold his place as top ranking comedian year after year? Why does this master entertainer succeed where others fail? The answer is in *The Standard*—on sale now, complete with magazine, 12-page novel and 20 pages of comics. Only ten cents.

The Standard
ON SALE NOW

Drive out ACHES



Television Programme
Schedule
CFNY TV CHANNEL 13
TUESDAY
3:00 p.m.—Afternoon Musicale
4:00 p.m.—Open House
4:30 p.m.—Howdy Doody
5:00 p.m.—The Earth and It's People
5:30 p.m.—Western Theatre
6:30 p.m.—CFNY TV News
6:37 p.m.—Weather
6:40 p.m.—Mystery of the River Boat
7:00 p.m.—Ranch Party
7:30 p.m.—My Little Margie
8:00 p.m.—Front Page Challenge
8:30 p.m.—Dragnet
9:00 p.m.—Yesterday's Pawn Shop
9:30 p.m.—The Travelling Salesman
10:00 p.m.—Profile
10:30 p.m.—Music To See
11:00 p.m.—CBC TV News
11:10 p.m.—CFNY TV News & Weather
11:20 p.m.—MovieTime

CKCW — Moncton
Channel 2
TUESDAY
7:00 p.m.—Tuesday Playbill News, Weather, Sports
8:00 p.m.—Operation X
8:30 p.m.—Over the Back Fence
9:00 p.m.—Open House
9:30 p.m.—Howdy Doody
10:00 p.m.—The Earth and It's People
10:30 p.m.—Western Theatre
11:00 p.m.—Range Rider
11:30 p.m.—Early Evening TV News
12:00 p.m.—Weather
12:30 p.m.—Sports
1:00 p.m.—Star Performance
1:30 p.m.—Robin Hood
2:00 p.m.—Front Page Challenge
2:30 p.m.—Dragnet
3:00 p.m.—T.B.A. (CBC)
3:30 p.m.—Summarising Sports
4:00 p.m.—Music To See
4:30 p.m.—CBC TV News
4:45 p.m.—Weather
5:15 p.m.—Feature Film

CONTRACT BRIDGE

By R. JAY BECKER

South dealer.
Both sides vulnerable.

NORTH
♠ J1043
♥ K5
♦ 862
♣ A1075

EAST
♠ 9765
♥ QJ3
♦ J9
♣ K443

WEST
♠ 82
♥ 74
♦ Q754
♣ QJ982

SOUTH
♠ AKQ
♥ A108862
♦ AK103
♣ —

The bidding:
South West North East
2♥ Pass 3♠ Pass
3♥ Pass 3NT Pass
4♥

Here is an odd play that is required of declarer in order to make his six heart contract. It is not exactly easy to make the hand even if the opponent's cards are known, and it is correspondingly more difficult to produce the slam when only 26 cards can be seen.

Nevertheless, the best line of play can be proved to be the correct one. With the queen of clubs being led, declarer can see he is not in such a hot contract. If he spends his time brooding whether he or his partner is responsible for having gotten so high, the slam may slip out of his fingers.

Probably the first thought that will occur to declarer is to discard a diamond on the ace of clubs, lead three rounds of spades, hoping they get by undisturbed, and then lead the ace and another heart, intending to discard the remaining diamond loser on the king of spades.

This sequence of plays involves one big hurdle — that the adverse spades will break 3-3. Since this occurs in roughly only one deal out of each three, prospects are not too promising, and in the actual deal, will fail.

Declarer's best chance is to win the ace of clubs and discard the queen of spades. He then follows by cashing the A-K of spades, and next plays the ace of hearts and a heart to the king.

The 3-10 of spades are now cashed and the two diamond losers are discarded to make the slam. The advantage of this method of play over the first one considered is that it is apt to succeed not only when the spades are divided 3-3, but also when the suit divides 4-2 and the player with the three trumps has the spade length. The chances of making the contract are therefore improved, peculiarly enough, by discarding a winner on the opening lead instead of a loser.

Bridge is a strange game.

Subventions Will Help Move Coal For Power

OTTAWA (CP) — Freight subventions on Maritime coal movements aimed at reducing power costs in the Maritimes will be provided by the new Progressive Conservative government, Prime Minister Diefenbaker said Wednesday.

He gave no details in making the announcement during the Commons throne speech debate, but made clear it will apply to coal moving within the Maritimes and destined to be used for power generation there.

GREAT COAL DEMAND
He said the program would result in a steady increase in the demand for coal, reduce power costs and provide an economic climate which would encourage industrial expansion.

Mr. Diefenbaker spoke after Opposition Leader St. Laurent, in a preceding speech, had said the government apparently planned to shift some of the burden of financing power development in the area onto the provincial governments.

The speech from the throne forecast a plan in co-operation with the Atlantic provinces for "creation of facilities for the production and transmission of cheaper electric power in those provinces."

LIBERAL PLAN SIMILAR
Mr. St. Laurent said this plan was similar to that of his former Liberal administration, except that it indicated the provinces would be asked to share the costs. The Liberals had planned that the federal government finance the entire plan.

Mr. Diefenbaker said the essence of his government's plan is to provide cheaper power. He said that during the election campaign Mr. St. Laurent had been unable to give any assurances that the Liberal plan would do that.

Mr. Diefenbaker spoke after Opposition Leader St. Laurent, in a preceding speech, had said the government apparently planned to shift some of the burden of financing power development in the area onto the provincial governments.

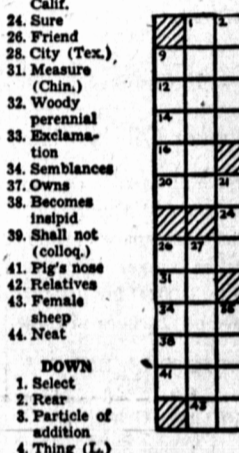
Mr. Diefenbaker said the essence of his government's plan is to provide cheaper power. He said that during the election campaign Mr. St. Laurent had been unable to give any assurances that the Liberal plan would do that.

IMPORT HORSES
MONTREAL (CP) — Twenty German thoroughbreds said to be the first horses of the trakehnen breed to come to Canada for breeding purposes — were unloaded Monday from the Poseidon liner Wilhelm. The horses are en route to the farm of Mrs. Gerda Friedrichs, near Toronto.

DAILY CROSSWORD

- ACROSS**
1. Scorch
2. Head coop
3. Giant
4. Leporida
5. Natural alkating area
6. River (Fr.)
7. Pole
8. Tacit
9. Like
10. Presently
11. And (L.)
12. Seesaw
13. Alto, Calif.
14. Sure
15. Friend
16. City (Tex.)
17. Measure (Chin.)
18. Woody perennial
19. Exclamation
20. Semblances
21. Becomes insipid
22. Shall not (colloq.)
23. Pig's nose
24. Relative
25. Female sheep
26. Neat
- DOWN**
1. Select
2. Rear
3. Particle of addition
4. Thing (L.)

YESTERDAY'S ANSWER
37. Ape's foot
38. Perched
39. Malt beverage
40. An assembly (Chin.)



DAILY CRYPTOQUOTE

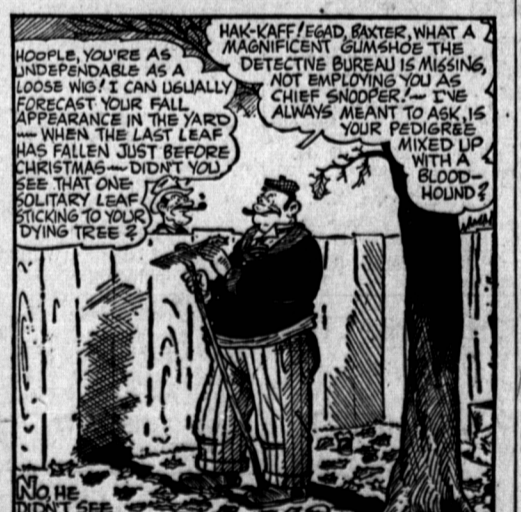
Here's how to work it: **AXYDLBAAXE IS LONGFELLOW**

One letter simply stands for another. In this sample A is used for the three L's, X for the two O's, etc. Single letters, apostrophes, the length and formation of the words are all hints. Each day the code letters are different.

ORLZL TD SUORTSE LTORLE EUUV US YIV, YHO ORTSWTSE AIWLD TO DU-DRIWLDGLIZL.

Yesterday's Cryptquote: **AMID A MULTITUDE OF PROJECTS, NO PLAN IS DEvised — SYRUS.**

OUR BOARDING HOUSE MAJOR HOOPLE



OUT OUR WAY



COAL

PUT YOUR COAL IN NOW AT CASH PRICES AND PAY LATER IN EASY MONTHLY PAYMENTS AT BANK INTEREST

Arnfast Limited

DIAL 6553