

Norse Settlement Discovery Seen Overshadowing Map

By DON MEKLE
NEW HAVEN, Conn. (AP)—Why all the controversy about Yale's map of Vinland? A Yale professor asks here.

Professor Kon-tantin Reichardt said the excavation of a 900-year-old Norse settlement in Newfoundland in 1963 "is more important than the map" in proving that the Vikings got to America long before Columbus.

Reichardt, an expert in ancient Scandinavian and Celtic literature, referred to an archaeological discovery by Norwegian explorer Helge Ingstad.

Ingstad announced in the fall of 1963 that he had found the remains of an ancient Norse community of turf-walled

houses at L'Anse au Meadow near the northern tip of Newfoundland.

The National Geographic Society, which supported Ingstad's work, called the discovery "the first conclusive proof of a Columbus settlement by white men on North American soil."

BUILT BY NORSEMEN
The community dated back to 1000 A.D. and was definitely built by Norsemen — "perhaps Leif Ericson himself," the National Geographic said in its April, 1964, issue.

"There is no doubt whatsoever about it," said Prof. Reichardt. "There has been many objects, possibly of Norse origin, found in America before, but none have provided real proof."

But as for the map, Lopez had his doubts.

"I would not endorse it without investigating it thoroughly," he said.

"Even before the map, I had no doubt the Norsemen were first. What is true is not new, and what is new (the map) is doubtful."

Lopez noted that the Yale University Press published a book this week backing up the claim that the map was drawn around 1440.

"Yes, the book is on sale," he said. "But I wouldn't invest in it."

Figures Given On Car Output

TORONTO (CP) — Canadian car makers have scheduled 12,248 units to roll off their assembly lines this week, compared with 12,957 actually turned out last week, the Motor Vehicle Manufacturers Association reports.

Only General Motors has scheduled an increase this week with other car makers turning out less than last week.

GM will produce 4,700 cars compared with 4,421 in the week end Oct. 9. American Motors will drop to 640 from 669, Chry-

ler to 3,680 from 3,670 and Ford to 2,784 from 3,427.

Reason for the decline: Plants were closed Monday for the Thanksgiving holiday.

Scheduled car production by company this week and total production to Oct. 9, with comparative figures for last week and 1964 in brackets:

American Motors 640 (669); 22,908 (26,143). Chrysler 3,680 (3,670); 91,305 (76,114). Ford 2,784 (3,427); 122,382 (116,723). General Motors 4,700 (4,421); 260,512 (214,964). Studebaker 304 (475); 14,507 (11,663). Volvo 60 (75); 2,408 (1,873).

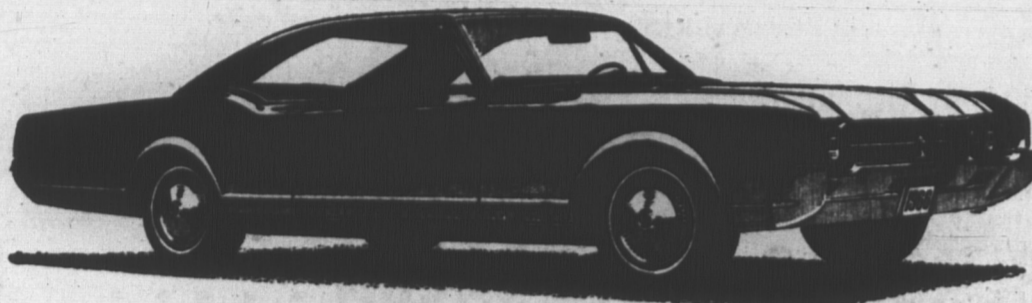
TRUCKS
Chrysler 312 (394); 12,861 (10,187). Ford 864 (876); 27,734 (26,096). General Motors 975 (1,208); 50,440 (40,215). International Harvester 250 (249); 10,667 (9,808).

CUT ELECTRICITY BILL
Britain hopes to produce electricity for about 1/2 cent a kilowatt-hour from nuclear reactors in 1970.

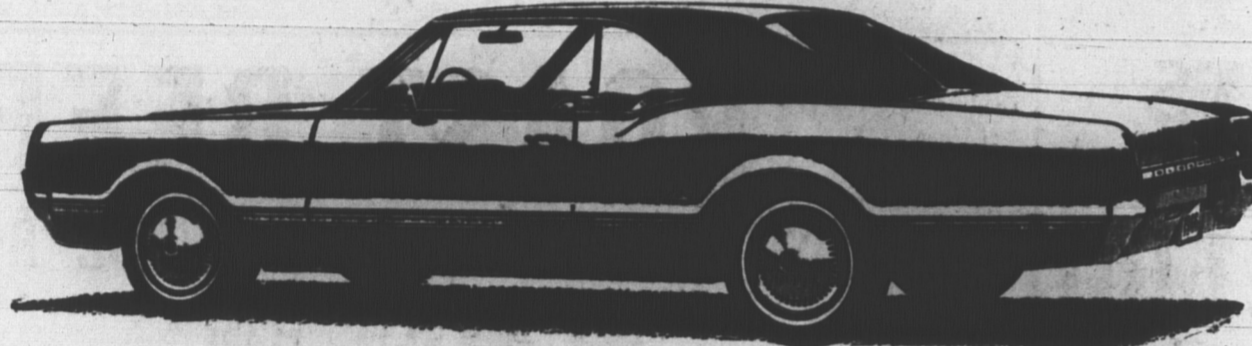
Ford Dividend Is Increased

DETROIT (AP) — Directors of Ford Motor Co. declared Wednesday a fourth-quarter dividend of 60 cents a share, an increase of 20 per cent over the rate paid last year and in the

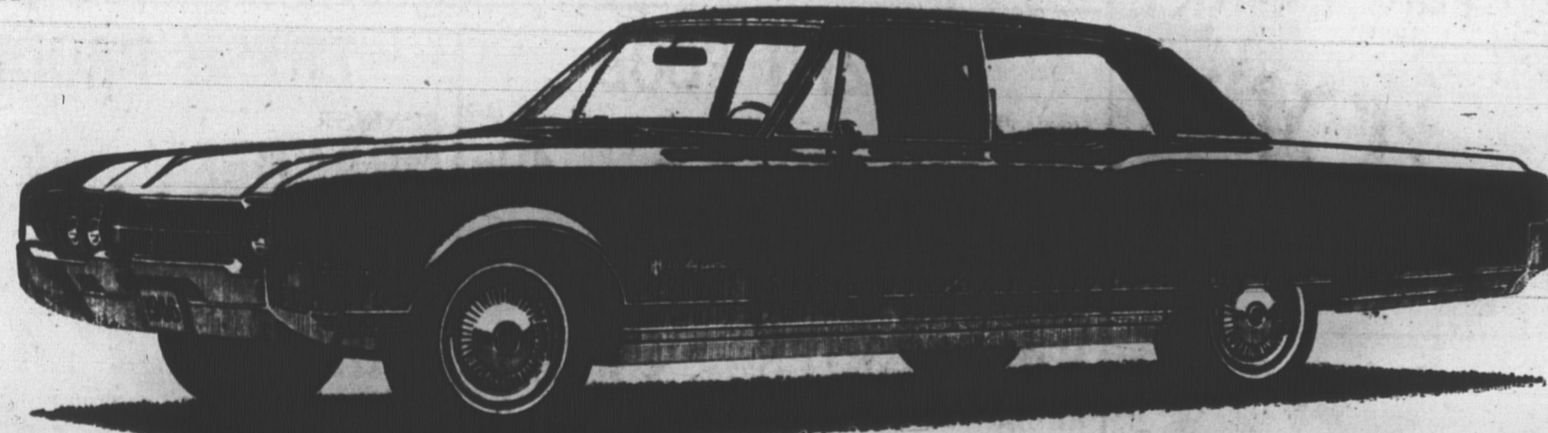
A GENERAL MOTORS VALUE



Buick Wildcat Coupe



Cadillac Holiday Coupe



Ninety-Eight Luxury Sedan



Dynamic 88 Holiday Coupe

These are the other new Oldsmobiles for 1966... they're luxurious, elegant, exciting, powerful, appealing. And all those things.

They're new. You don't know them yet. But they bring you the best possible references. They're all Oldsmobiles. Which is to say that they're extra-special. Extra-powerful, extra-luxurious, extra-smooth Improved Rocket engines, teamed with smooth Turbo Hydra-Matic transmissions, are available on all full-sized Oldsmobiles. They offer you new interiors, new style seats and carpeting. And you can get familiar Olds luxuries like air conditioning or totally new features like Automatic Level Control that lets you load 550 pounds of load into the trunk and still ride the way you did empty.

Including, and this is a real revolution, if we do say so ourselves, including today's only full-size front-wheel-drive car. The Toronado. There's never, ever, been one like the Toronado. A 425-cubic-inch Toronado engine pours the power through a re-designed Turbo

Hydra-Matic Drive, right to the front wheels. Toronado performs and steers and holds the road like nothing you ever tried before. It's an Oldsmobile. You'll pick out the family likeness right away. We hope you'll take the time to come in and see the new Oldsmobiles, soon.

They're very nice cars and very, very new.

Oldsmobile

for nineteen sixty-six

AUTHORIZED OLDSMOBILE DEALER IN CHARLOTTETOWN:
ISLAND CHEV. - OLDS. LTD.
203 F.TROY STREET, CHARLOTTETOWN PHONE 894-6577
Be sure to see Bonanza over channel 18 at 10 o'clock Sunday night.
SEE YOUR LOCAL AUTHORIZED QUALITY OLDSMOBILE DEALER TODAY



IKE IS 75 TODAY

Former President Dwight Eisenhower, who will be 75 today, presented this picture at his Gettysburg, Pa., home recently. The five stars, a reminder of his soldiering days, adorn the door to his office. This picture was made by AP staff photographer Paul Vatis. (AP Wirephoto)

MONUMENTS

Granite - Marble - Bronze — Cemetery Lettering.

Vere Beck & Son Ltd.

"Memorial Craftsmen Since 1870"

Charlottetown Montague

FALL DRESSES

- Double Knits
- Wools
- Silks
- Arnel Jerseys

8.95-34.95
Sizes 7-15, 8-10, 13 1/2-24 1/2

Gloria Ladies' Wear

"Where Smarter Women Shop"
St. George St. Charlottetown

WOOLWORTH'S

86th Anniversary Sale

Specials

<p>Youth's Lined Chino PANTS</p> <p>Dak or boxer style. Flannelette lined, washable, slim tapered. Sizes 8 to 16. In colors of black, charcoal and antelope.</p> <p>3.99 Value Now Only \$2.63</p>	<p>Manufacturers Special JEWELLERY</p> <p>Values to 3.95 Now Only 2 For \$1</p>
<p>Ladies' RINGS</p> <p>For Every Occasion</p> <p>Values to 3.95 Now Only 88c</p>	<p>Ladies' Fall PURSES</p> <p>Latest Styles</p> <p>Reg. 3.98 Now Only \$2.97</p>
<p>Lowney's Creamy Fresh CARMELS</p> <p>Now Only Per Lb. 48c</p>	<p>Willard's CHOC. BUDS WILLOW CRISP COCO FINGERS</p> <p>Now Only Lb. 68c</p>

WOOLWORTH'S
Queen St. Dial 894-8571 Charlottetown