



DRAGGERS PLAY ROLE IN ECONOMY

PLANTS GIVE BOOST

Trend is established for future of Souris

Taking a look at the future, R.A. Leard, mayor of Souris, says he does not see the town "blossoming into a small city but a trend for the future has already been established."

Mayor Leard thinks the Kings County town, with its processing plants will provide a pleasant rural life for marginal land holders who will supplement their incomes by working in the town.

He said "this trend has already been established and now workers commute to the town from as far away as 30 miles."

Souris has always been noted for its connection with Gulf of St. Lawrence fisheries and is now the home of a dragger fleet which numbers about 20 ships.

Fish processing plants in the town give a large boost to the area's economy, with as many as 300 plant workers employed at peak season.

BIGGER FARMS
Mayor Leard pointed out that farmers and fishermen of the area will have opportunity to provide the staples for the large fish and frozen food plant which will begin operation in Kings County in the summer. He emphasized, however, that "farms, like draggers, will have to be larger and more acreage will have to be matched with bigger and bigger investment to make both land and machinery pay."

A third potential of the area, according to Mayor Leard, is the tourist industry. "We have



RAY LEARD

beautiful scenery and many miles of fine beaches," he said, "but to attract the tourists we must have more overnight accommodation for the traveller. Emphasis should be put on the provision of more locally-cooked sea foods for the tourist. With many types of sea food right on our door step, well-prepared sea food dishes are a must for every menu."

Souris, which was incorporated into a town in 1910, now has a population of 1,537. It boasts five elementary schools, a re-

gional high school, homes for senior citizens, a Legion home, excellent wharf facilities and a number of fish packing plants.

SHIPPING CENTRE
The town has the biggest pulpwood stockyard in the province and pulp is shipped to such countries as Italy, France and England. Souris is also a shipping centre for produce going to Newfoundland, Nova Scotia and the Magdalen Islands. The marine wharf has a heated shed for potato and other produce storage.

According to Mayor Leard, the town is anticipating the construction of harbor facilities for fishermen this year. He said he expects an early federal announcement on the matter. "This may possibly be a landing wharf for fishermen and other small vessel owners," he said.

Two years ago, a water and sewer system was installed in the town at a cost of several hundred thousand dollars.

Affairs of the town are administered by Mayor Leard and a six-man council. Council members are Clarence MacDonald, Andrew Meurant, Charles Gillis, Walter Solomon, Sterling Dingwell and Richard Power.

SEARCH ON
The Soviet Union is searching for some 700 documents, letters and notes written by Lenin which have disappeared since they were written.

Traffic bottleneck relieved at Borden

BORDEN — The most significant progress seen here during the past year was the completion of the new pier which was completed late in 1964.

Originally slated for completion in December of 1963 the date was pushed forward to June of 1964 when a steel shortage developed. Due to shortage of materials and weather problems the McNamara Construction, the general contractors on the job, were given two extensions on their contract.

"During the early stages of construction, Wilfred Clausen, resident engineer Whitman Egan and Associates of Halifax, the consultant engineer for this project, stated 'we want to use all Canadian products for this project.' He added 'but when we went to order the steel we found that all Canadian steel mills were booked up.' He said at that time that, as a result everything should have been completed, except the steelwork, by the end of 1963."

The new pier gives the Borden terminal a total of three and has helped ease the traffic tie-ups but it will really prove its worth this summer during the height of the tourist season. Originally it was planned that the new pier would be used primarily by the MV Confeder-

ation in moving vehicular traffic. Another accomplishment seen here was the extension and renovation to the Legion Home started last June and completed in December.

The project was completed at a cost of \$25,000 and the work was carried out by Walter Newcomb and Kelvin MacLennan.

The extension consisted of a wing measuring 25 x 40 feet. With this additional space the main floor of the home now consists of a large area for dances along with bar facilities, dry cleaning, a wash room, a kitchen along with a stage with PA system and a ticket booth.

Another feature on this floor is a completely equipped kitchen. The bottom floor is subdivided into a beverage room, lounge and TV room with bar and wash-room facilities.

The original home, erected in 1951, makes its facilities available for most of the community activities including girl guides, scouts, naval cadets and other projects. Blood donor clinics are also held here.

The home has a membership roll totalling 130 along with associate members. The members come from the town itself and surrounding areas extending as far as Crapaud.

CO-OP CUSTOMERS HAVE

SMILES OF SATISFACTION



* in 1964 more people shopped Co-op.

* more people joined Co-op.

* more people saved at the Co-op.

in 1965 a new store to give you greater variety and widest of selection.

Here are actual Dividend Figures:

Spend Weekly	Total Spent on 50 week basis	Total Rebate
\$25.00	\$1,250	\$62.15
\$20.00	\$1,000	\$50.00
\$15.00	\$750.	\$37.50
\$10.00	\$500.	\$25.00

Its Easy to Join

\$25 per share

Just \$25.00 makes you a shareholder in the Co-op. Inquire at the office about the easy payment plan, 5.00 down and four payments of \$5.00 each. 6% interest is paid on your share capital. Your dividends start when you make your down payment.

JOIN TODAY — SAVE EVERY TIME YOU SHOP!

Palmer Electric

Limited

In step with

Island Progress

- Oil Heat
- Refrigeration
- Electrical
- Lightning Rods
- Motor Sales and Service

Fitzroy Street

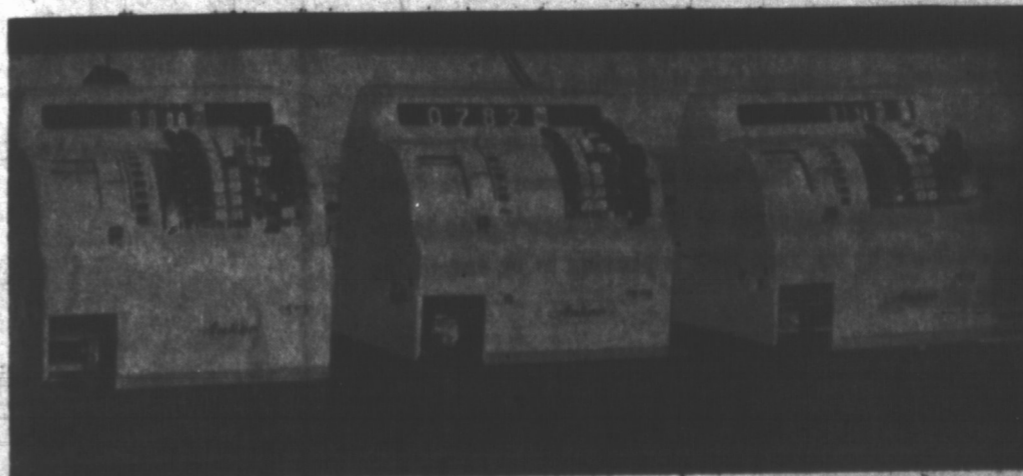
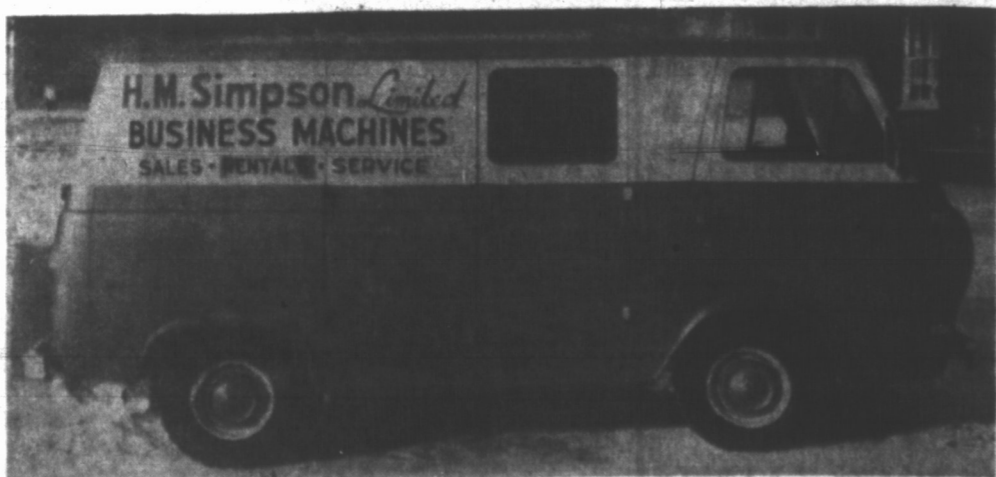
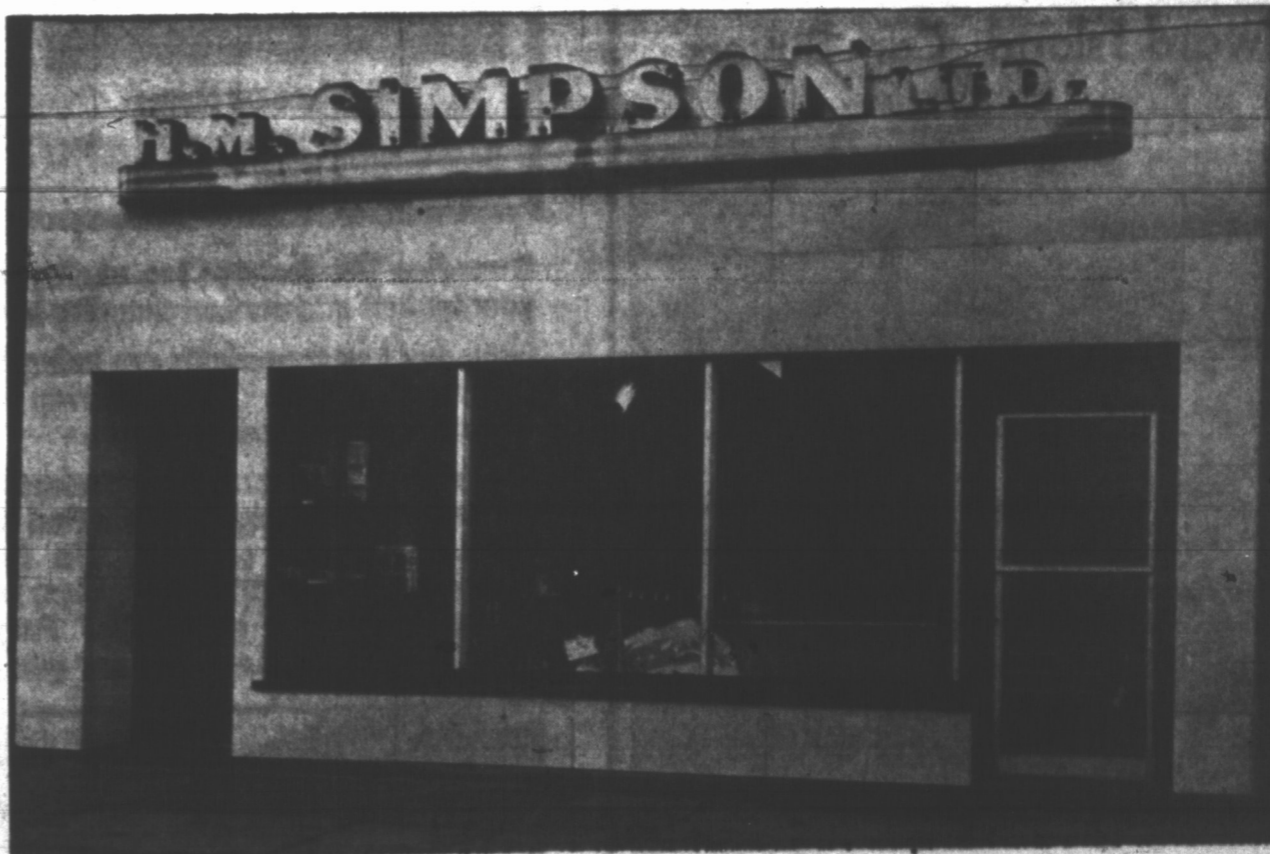
Charlottetown

CO-OP SUPER MARKET
AN ISLAND STORE OWNED BY ISLAND PEOPLE
BIG ENOUGH TO SERVE YOU - NOT TOO BIG TO APPRECIATE YOU
FREE DELIVERY • PHONE 4-8557 • FREE CUSTOMER PARKING

38 YEARS of PROGRESS :

We are very happy and proud to have shared in the prosperity of this community in the past 38 years and we would like to take this opportunity to thank our customers who have made this possible.

- Smith Corona Marchant Typewriters, Adding Machines, Calculators, Photo Copiers, Accounting Machines
- Remington Rand Typewriters and Systems
- Anker Cash Registers
- Rex Rotary Stencil and Spirit Duplicators
- Stenorette Dictating Machines
- Simplex Time Clocks and Time Control systems
- Office Furniture and Filing Cabinets - Steel and Wood



"Qualified Sales and Technical Service on all Products we Sell."

H. M. SIMPSON LTD.

138 Great George Street, Charlottetown

220 Water Street, Summerside