



THESE THREE young ladies are being tobacco leaves on the farm of Leonard Vaerwyck and Mark Van-neste, Grandview. Tobacco producers in this province had their greatest year for production. The

estimated average, a government spokesman suggested, was around 1,100 pounds last year. Tobacco leaf produced on the better farms was considerably more than that.

# Tobacco plants not as tough as is frequently believed

By J. D. Kilpatrick  
Horticulturist  
PEI Dept. of Agriculture  
Tobacco requires a light sandy soil that is low on nitrogen content. While nitrogen is essential to make the young plants grow, it must not be present in large quantities once the maturing process begins. A knowledge of soil chemistry and the ability to control the nitrogen content is essential to successful tobacco growing. Ideally, the best soil would contain no nitrogen. The grower would then put in just enough to grow the plants so that the nitrogen in the soil would be completely absorbed when maturation started.



DOUG KILPATRICK

Contrary to general belief, tobacco is a tough, hardy plant and can withstand fairly great extremes of moisture and temperature. However, the least touch of frost anytime before harvest could completely wipe out a year's crop.

In P. E. I. there is an ever-present danger of mid-September frosts and although much of the crop will have been harvested by that time, many thousands of dollars worth of leaves could be destroyed by one night of frost. Similarly, frost in the latter part of May will kill the young plants.

## Education important in farming

By DAVID E. WARD  
The three primary resources in farming are land, labor and capital, a fourth resource, management, could be added. Everyone has these resources in varying quantities. Management is the resource which co-ordinates the remaining three. It can be considered as the most important.

The degree of management ability can partly be measured by profit. The management ability as exhibited now and as shown in the past may determine one's ability to obtain further capital. Land, labor, capital, and management then actually determine the farm production. To the same extent that an expanding operation calls for the use of someone else's labor, it may call for the use of someone else's capital.

Marketing is now coming to be an important agricultural problem. In the not too distant future we may see production as an appendage or a thing, attached to marketing up to now, you see, marketing has become a thing attached to production.

In other words characteristics of modern farming imply less labor and more managerial ability. This is where education enters the picture; managers require more education than laborers. Formal education and continuing education is then necessary for profitable farm business in the future.

Part of the solution of farm income lies in giving as many years of schooling as possible to the young people who will be operating the farms of the future.

Various studies have shown for example that income rises as education rises. Shown also was the fact that sons and daughters of high income farmers who move off the farm undertake special training for the job they received. However this was not true of young people who leave low income farms.

People are also a resource and education is first for people secondly for agriculture.

The problem of small farms, small not necessarily in terms of size but small in terms of turnover, in a very large part is the problem of gross underdevelopment of human resources.

In Denmark, for example, 35 per cent of farmers over 45

bringing in leaves from the field and unloading them, and a curer, who is the top paid man on the crew and the man "who can make you or break you". Primers and tiers (tiers are women, generally who tie leaves to "sticks" which resemble lathes) are next on the labor pay scale. Picking requires a strong supple back and tiers must have considerable manual dexterity. Young teenagers can fill the less demanding job of leaf handlers.

The leaves are brought in from the field in a "boat" or drag and are tied in "hands" of three leaves to a stick; 32 hands (96 leaves) to each stick. Experienced tiers some growers are using tying machines. These machines resemble large sewing machines and sew the leaf butts together over the lathes. This requires a crew of five people - one person less than would be needed if hand tiers were employed. More tobacco can be tied on each lath with a tying machine, but overloaded lathes cause poor air circulation in the kiln and makes curing difficult. The sticks are then placed in specially - constructed curing barns known as "kilns". About six kilns are needed for a standard unit, each representing an investment of about \$2,000.

## KILN A DAY

A day's work is to fill one kiln which holds about 1,225 sticks. Propane or oil burners bring the temperature to 90 degrees. This temperature is held with high humidity for about two days until the desired lemon yellow color is obtained.

The temperature is then slowly raised to about 115 degrees to fix the color in the leaves. Heat is again increased and the temperature is driven up to 165 degrees to completely dry the leaves and stems. Curing is now completed.

The kiln is then opened to allow the leaves to take up enough moisture to toughen them for handling and storage. This is known as "bringing into case". After 2 to 6 days the cured tobacco is stored in tiers in a dry barn.

# Island tobacco position good

Prince Edward Island's tobacco industry is in a better position now than it has ever been since the crop was first produced here commercially in 1959. The reference is to the modern production effort. Crops were grown in the P. E. I. government's experimental farm at Greenfield in 1959 and 1961.

This optimistic statement is attributed to a provincial department of agriculture spokesman, Doug Kilpatrick whose views on the industry are reproduced elsewhere in this edition.

An objective look at the industry appears to suggest two things. One is that the tobacco production has not gained the prominence and the relative economic importance that was predicted of it by outside experts - so called at least, who predicted tremendous possibilities.

The other conclusion is that the possibilities were overvalued by at least some of those prophets of future development.

One man said for example, that tobacco production capacity and the money it would bring to the province, would compensate the Island for not having any heavy industries. Fantastic sums of money were suggested possibilities.

This development has not taken place, nor is it likely to in the future. But agricultural research men here suggested last year the time is not far distant when tobacco will be bringing \$1,000,000 annually in cash returns.

The past predictions of seven or eight years ago by visitors, and the forecast of last year must be regarded as speculative though last year's prediction came from the Soils and Crops committee of the Agricultural Council from the P.E.I. Agricultural Council from the P.E.I. and Canada departments of agriculture and men who are closely associated with the Island's developing agricultural economy.

## ENCOURAGING FACTS

But several hard facts are encouraging, and this reference is to accomplishments that are ready to be recorded.

Yields per acre have risen from 960 pounds in 1961 to 1,100 pounds last year and the price was also really good. The estimated yield in 1965 was 440,000 pounds.

The yield in 1964 was 385,000 pounds for an average of 990. In the previous year it was 350,000 for an average production of 780 pounds.

## QUALITY GOOD

Quality was really good last year, experienced tobacco men said, and this was one of the crops that thrived on the dry, warm summer. The tobacco leaf weighed more, they said, and one producer was talking of an average of 1,500 pounds per acre during the latter part of the season, though he reduced his estimate slightly after all of his crop had been harvested.

Douglas Roloson, Ocean View became the Island's largest producer when he purchased the former experimental farm at Greenfield to add to his acreage total.

780 pounds. In 1962 there were 163,400 pounds produced for an average yield per acre of 545 pounds this was the low point in the tobacco industry here.

In 1961, the first year the crop was produced by Island farmers on their own land, the yield was 81,970 pounds for an average yield of 960 pounds.

Tobacco is planted about April 1 in a cold frame greenhouse. While the greenhouse represents an investment of about \$2,500 for a glass unit, seed is a minor expense. Minute in size, one ounce costing \$3 will seed 30 acres. Some P. E. I. growers are using plastic greenhouses successfully. These units can be built for \$500 - \$700 but must be re-covered each year.

When the plants have reached seven to eight inches in height in the greenhouse they are transplanted to the field. This usually takes place soon after May 24. Five people generally take part in this operation: A tractor driver, two people on the planter, and two persons pulling plants in the greenhouse.

Following completion of harvesting the tobacco is divided into five or six different grades for shipment. It is then baled and shipped to processing plants in Ontario.

Grading starts around Nov. 1, after preparation of the following year's tobacco land has been completed. It lasts most of the winter and must be finished before March 1 when the tobacco markets close. This points up the fact that while the growing season lasts only about 130 days, the tobacco growing is practically a year-round job.

As for markets now and in the future, the tobacco companies feel there is a definite need for increased production in Canada.

## Countdown underway

MONTREAL (CP) - Exactly one year from today the 1967 Montreal world's fair will open to visitors.

A "countdown clock" was to be switched on as the keynote of a day dedicated to "one-year-to-go celebrations."

## TOP MAN

Harvesting entails the employment of as many as 15 persons on the average unit of 30-35 acres. A standard crew would consist of six primers (pickers) two tiers, four leaf handlers, two

## USED DRUG FOR LONG

Hill tribes in India have used the rauwolfia plant, now an ingredient of tranquilizers, for medicine for 2,000 years.

# Third wreck within week

years of age and 85 per cent of farmers under 45 years of age had attended an agricultural school.

Agriculture is more than farming, it includes all those industries related to farming. These businesses - commonly referred to as "agri-business" offer employment to those who are properly trained and want to work in agriculture.

Few young people who start farming have an agricultural school education. All of the responsibility for this situation cannot rest upon young people. Parents exert a dominating influence on the extent and nature of their children's education.

Education is a continuous process throughout life. This type of continuing education can be described as "any situation where learning takes place." This can happen at farm management meetings, short courses, field trips, tours, swine breeders meetings and so on.

For further information on courses available in agriculture contact either The Registrar, Nova Scotia Agricultural College, Truro, N.S. or the P.E.I. Department of Agriculture.

CALCUTTA, India (AP)—The third train wreck within a week in Naga tribal territory of Assam State and a new uprising by Mizo tribesmen against Indian government forces in southern Assam were reported Wednesday night.

A freight train in the Tinsukia-Mariani area went off the rails Wednesday. No casualties were reported. There was no indication of the cause.

Three trains have been blown up in the area within two months, with a death toll of 133.

A leader of the Naga independence movement died Wednesday that his people are involved in train sabotage, as suspected by Indian officials.

To the south, Mizo rebels exchanged rifle fire for two hours with Indian forces near the town of Aijal Monday night, official Assam sources reported. There were no reported casualties and the rebels finally fled.

★ ★ ★ ★ ★

**FRIDAY & SATURDAY ONLY**

Confederation Centre

SHOWS 8 P.M.

NOW EVERYONE CAN SEE THE MOST LOVELY MOTION PICTURE OF ALL TIME!

**MY FAIR LADY**

Winner of 8 Academy Awards including Best Picture.

AUDREY HEPBURN - REX HARRISON

All Seats Reserved

TECHNICOLOR

ADMISSION PRICES  
Adults: \$2.00; Students \$1.25; Children \$1.00  
Amusement Tax Included

★ ★ ★ ★ ★

# HOW ABOUT A PICNIC?

**BUT**

First to ...

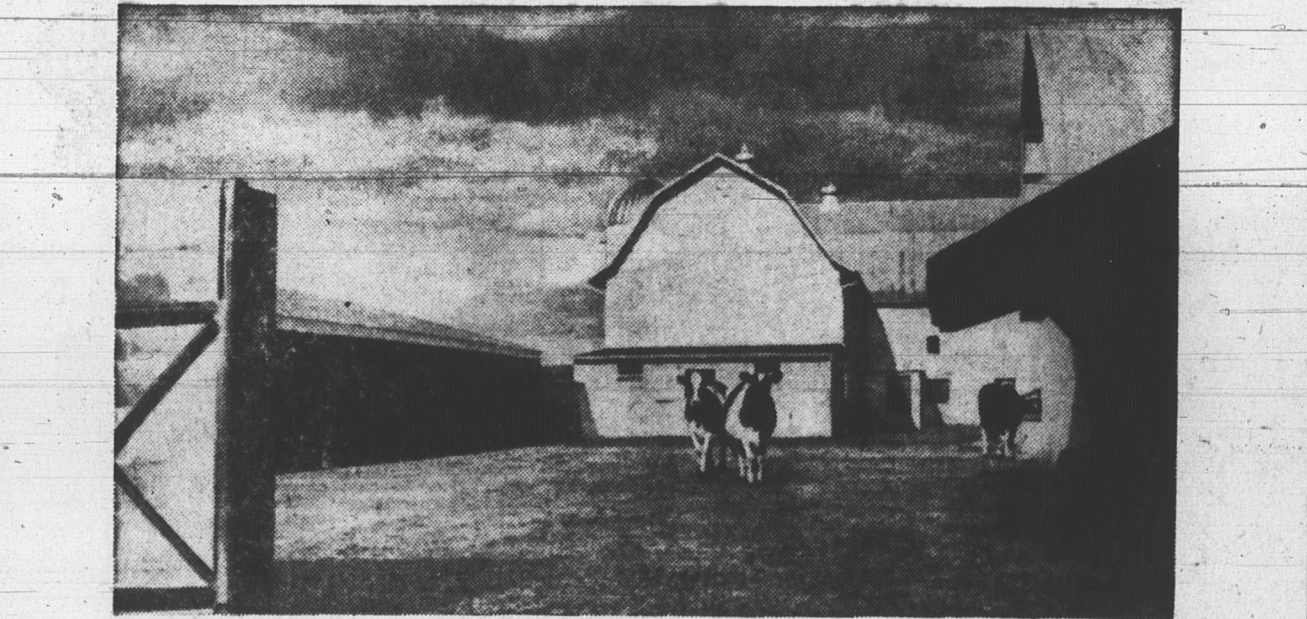
**SAVE-EASY**

"The Home of Budget Wise Shoppers"

"Picnic-time" is just around the corner and people everywhere are looking forward to bright Summer weather and fun-filled Summer activities. "SAVE-EASY is stocked full of all the delicious foods to complete your picnic, barbecue or friendly get-togethers this Summer. There are tasty cello-wrapped cold meats, hamburg and steak for your barbecues, wieners for your hot-dog parties, pickles of all kinds, soft drinks, fresh lettuce, celery, tomatoes, etc. So when you're food-shopping this Summer visit your friendly SAVE-EASY store and pick up the necessary food requirements that will complete your Summer picnics and all other Summer entertaining activities. "It's so easy to SAVE at 'SAVE-EASY'."

**GAUDET'S SAVE-EASY**  
Granville Street  
SUMMERSIDE

**ELLIS BROS. SAVE-EASY**  
St. Peters Road  
SHERWOOD



## MODERN FARM IMPROVEMENTS IN Concrete

MADE WITH **MARITIME CEMENT**

Put concrete to work for you to save time and money indoors and out. Here are just some of the ways it puts modern farm operation on a profitable basis. Experience proves that concrete improvements pay for themselves in a few years, are good for a lifetime.

RESTORATION: Image of a restored barn.

POULTRY HOUSE: Image of a modern poultry house.

FEED BUNK: Image of a long feed bunk.

CULVERTS: Image of concrete culverts.

MILKING PARLOR: Image of a modern milking parlor.

GET THIS FREE 116-PAGE BOOK OF SUGGESTIONS

MARITIME CEMENT COMPANY, LIMITED 2-1  
272 St. George Street, Moncton, N.B.

Please send me "CONCRETE ON THE FARM"

NAME \_\_\_\_\_

ADDRESS \_\_\_\_\_

Ask for these two high quality products for all your concrete work. Available at your building materials supplier.

MARITIME MASONRY