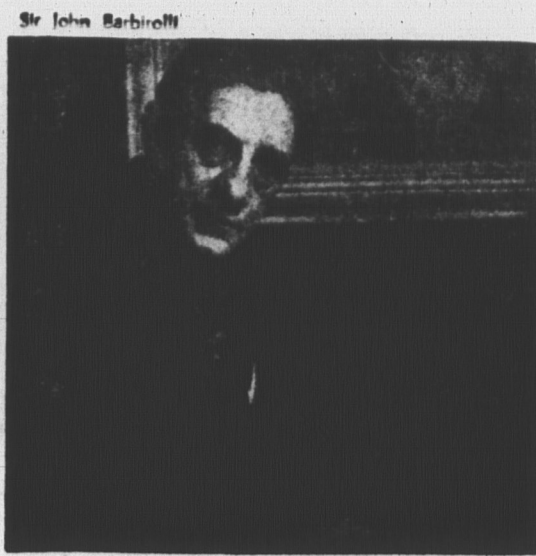


Claudio Abbado



Sir John Barbirolli



Annie Fischer



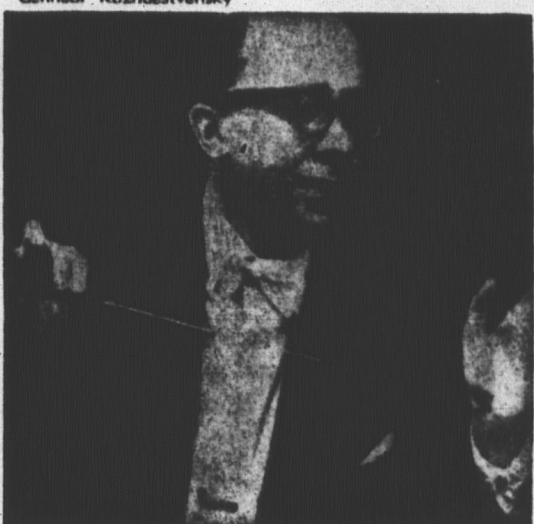
Pierre Fournier



Alexander Gibson



Nicolai Petrov



Gennadi Rozhdzestvensky



Natalia Shakhovskaya



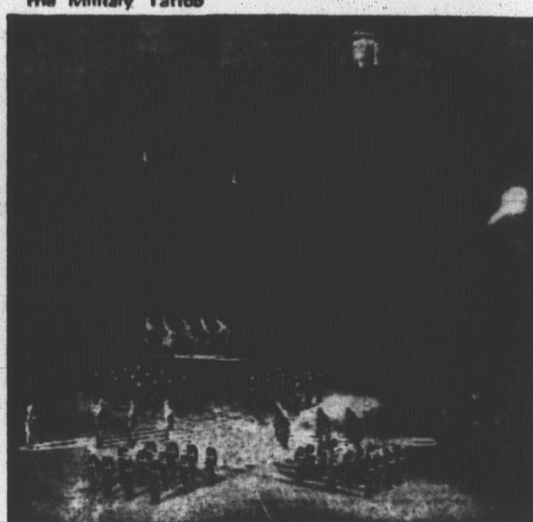
Walter Susskind



Henryk Szeryng



Mikhail Waiman



The Military Tattoo

# 20th Edinburgh International Festival

August 21  
September 10 1966

During the past years, prominence has been given in each Festival to the works of one or two composers. This policy will be continued for the Twentieth Edinburgh International Festival and the composers will be Robert Schumann (1810-1856) and Alban Berg (1885-1935).

The Wurttemberg State Opera will pay a return visit to the Festival and its repertoire will include both operas by Berg. The orchestral and chamber concerts, and the recitals, will feature the works of Schumann and Berg but will in no way be confined to these composers.

The Moscow Radio Orchestra, appearing for the first time in Great Britain, will open the series of their concerts with a Tchaikovsky Programme. Their subsequent concerts will include a number of works by Russian composers. Amongst these will be the first public performance in Britain of Prokofiev's Cantata "They are Seven." For this work the Moscow Radio Orchestra will be joined by the Scottish Festival Chorus.

The Scottish National Orchestra will give two concerts with the Scottish Festival Chorus. They will open the Festival with performances of Britten's "Cantata Academica" and Tippett's "A Child of Our Time." In their second concert, they will repeat the performance of Mahler's Eighth Symphony which was so outstandingly successful at the Opening Concert of last year's Festival.

Canadian musicians will be making a large contribution to the Twentieth Festival. Two concerts will be given by the National Youth Orchestra of Canada, conducted by Walter Susskind (September 3rd, September 4th). The soloists will be Martha Argerich (Piano) and Evelyn Lear (Soprano) and the programmes will include Ravel's Piano Concerto in G Major, Mussorgsky's "Pictures from an Exhibition," Berg's concert aria "Der Wein" and "Till Eulenspiegel" by Richard Strauss.

**OPERA**  
THE WURTEMBERG STATE OPERA, STUTTGART  
ALBAN BERG—Wozzeck: Lulu  
MOZART—Die Zauberflöte  
WAGNER—Lohengrin  
Conductors: Carlos Kleiber, Ferdinand Leitner  
Producers: Leopold Lindtberg, Günther Rennert, Wieland Wagner  
Casts will include Hildegard Hillebrecht,

Grace Hoffman, Ingrid Seefried, Anja Silja; Carlos Alexander, Richard Holm, Gustav Neidlinger, Gerhard Stolze, Wolfgang Windgassen, Fritz Wunderlich.

**CHORAL AND ORCHESTRAL CONCERTS**

MOSCOW RADIO ORCHESTRA  
Conductor: Gennadi Rozhdzestvensky  
NEW PHILHARMONIA ORCHESTRA  
Conductors: Claudio Abbado, Rafael Kubelik

HALLE ORCHESTRA  
Conductor: Sir John Barbirolli  
SCOTTISH NATIONAL ORCHESTRA  
Conductor: Alexander Gibson  
NATIONAL YOUTH ORCHESTRA OF CANADA  
Conductor: Walter Susskind  
B.B.C. SCOTTISH ORCHESTRA  
Conductor: James Loughran

Soloists: Gwyneth Anwar, Martha Argerich, Janet Baker, Annie Fischer, Heather Harper, Gwyneth Jones, Evelyn Lear, Norma Procter, Natalia Shakhovskaya; Daniel Barenboim, Emil Gilels, Pierre Fournier, Donald McIntyre, Vilem Pribyl, Vladimir Ruzdiak, Henryk Szeryng, Mikhail Waiman.

**CHAMBER CONCERTS AND RECITALS**

VIRTUOSI DI ROMA  
DANZI QUINTET  
AMADEUS QUARTET  
DELME QUARTET  
OROMONTE TRIO  
WITH NINA MILKINA  
MAUREEN JONES  
AND BRENTON LANGBEIN  
MARTHA ARGERICH  
ANNIE FISCHER  
EMIL GILELS  
JANET BAKER  
EVELYN LEAR  
ELISABETH SCHWARZKOPF

**THEATRE**

PIRAIKON THEATRON, ATHENS  
Sophocles: Electra  
Euripides: Medea  
ROYAL LYCEUM THEATRE COMPANY  
Aristophanes: The Birds (in a translation and adaptation by Douglas Young)  
POP THEATRE (Director Frank Dunlop)  
Shakespeare: The Winter's Tale  
Euripides: The Trojan Women  
TRAVERSE THEATRE  
Bettina Jonic: Lorca  
THE POLISH MIME THEATRE

THE MOSCOW PUPPETS  
THE PAUL TAYLOR DANCE COMPANY, NEW YORK

**LATE-NIGHT SHOWS**  
ROYAL LYCEUM COMPANY  
"Welcome to your Cory Bed"—a late night look at the Scottish animal.  
FRANCOISE HARDY

**EXHIBITION**

There will be a retrospective exhibition of the paintings of Georges Rouault (1871-1958) at the Royal Scottish Academy, The Mound, Princes Street, arranged in conjunction with the Arts Council of Great Britain.

**EDINBURGH INTERNATIONAL FILM FESTIVAL**

Film at Edinburgh makes its own contribution to the international manifestation of the Arts: the Twentieth Edinburgh International Film Festival, to be held from August 21 to September 4, is an integral and official part of the Edinburgh Festival. There will be over sixty performances of feature and short films representing work from all the major film-producing countries of the world. It is expected that more than two hundred films from about forty countries will be screened. Performances take place every day except Sunday in the Cameo Cinema at 3 p.m. and 7.30 p.m., and at Film House at 11 p.m. On August 26 and September 2 the 11 p.m. performance will be in the Cameo Cinema. Gala performances will be held on Sundays, August 21, August 28 and September 4.

In view of the success of the International Educational Film Week held for the first time in 1965 this event is to be staged again to demonstrate the latest uses of film in all spheres of education. The annual Celebrity Lecture will be given on Saturday, September 3 and the Golden Thistle Award, made in association with Films of Scotland, will be presented to a distinguished international film maker at the ABC Cinema on Sunday, August 28.

Further details may be obtained from The Director, Edinburgh International Film Festival, Film House, 3 Randolph Crescent, Edinburgh 3.  
The Eighth International Congress of Film Societies will take place on September 3 and 4. Particulars from the Honorary Secretary, Federation of Scottish Film Societies, Film House, 3 Randolph Crescent, Edinburgh 3.

**FESTIVAL CLUB**

In a large city, where there are so many varied events and activities, it is difficult for the visitor, and even the resident, to find some focal centre for the three weeks of the Festival. It is to provide such a centre that the Festival Club exists. There you will find the artists, the Press, Festival visitors from all over the world, and anybody who has any connection with, or interest in, the Festival.

The Club will be licensed, and offers all the normal club facilities—restaurant, snack bar, lounge, reading and writing rooms, as well as an Information Bureau which will tell you all you want to know about the Festival and about Scotland in general. Charges for coffee, tea, drinks and meals are very reasonable, and dancing in the evening (for diners only) is free.

The Club itself, situated in the Assembly Rooms and Music Hall at 54 George Street, is in one of Edinburgh's most beautiful buildings. Membership and Guest Cards may be ordered on the Ticket Order Form in the Brochure, or they may be bought at the Festival Office or Festival Club on arrival.

Prices for the various cards and tickets are shown on the Ticket Order Form. Each Season Member may purchase two books of Guest Cards and each Weekly member may purchase one book. Daily Membership Cards will not be on sale after 8 p.m. on the day for which the card is valid. Daily Membership will be reduced to 3/- for parties of ten or more.

**FESTIVAL GUILD**

The Edinburgh International Festival Guild has been established to strengthen the bonds between friends of the Festival in all parts of the world, and to contribute still further to international understanding and goodwill through the medium of the Arts.

Members are sent all Festival Brochures and the Souvenir Programme, on publication. They are guests at a special Garden Party in Edinburgh during the Festival and receive invitations to various functions throughout the year.

Membership is open to all friends and well-wishers. The annual subscription is a minimum of £1 (\$3) for adults and 10/- (\$1.50) for school children. These may be included in the Ticket Order Form in the Brochure.

**MILITARY TATTOO**

This year's Military Tattoo on the Esplanade of Edinburgh Castle will provide Festival audiences with something to suit everybody's taste.

Directed once again by Brigadier Alasdair Maclean the Tattoo runs from Friday, August 19—two days before the Festival starts—until Saturday, September 10. Pakistan will be providing the overseas contingent—70 soldiers who occupy two places in the programme, marching and playing, and then dancing. Gymnasts from the British Army School of Physical Training at Aldershot, Motor Cyclists from the Royal Artillery, and Airmen of the Queen's Colour Squadron will also be on parade. Although there will be modern items in the show, the traditional aspects have not been forgotten. Nearly 150 bandmen from the Royal Artillery and the Royal Scots Greys will be on parade for the massed bands. The Greys, along with The Royal Scots, the King's Own Scottish Borderers, the Black Watch and the Gordon Highlanders will provide what is undoubtedly the greatest regular favourite—the massed pipes and drums. Visitors who have not been to an Edinburgh Festival Military Tattoo before—though over four million people have seen it since it started as a regular event in the Festival calendar—are reminded that this is an open-air show, and if the evening should prove to be on the chilly side they should dress accordingly. For all performances except the matinee and final performance seat prices will range from 5/- to 15/.

For final performances (Saturday, September 10, 10.30 p.m.) seats will cost from 7/6 to £1 and at the matinee prices will range from 1/- to 7/6. Some unreserved seats will also be available, priced at 1/- for the matinee, 6/- for the Finale and 4/- for every other performance. There are no performances on Sundays or Thursdays; times and dates of weekday shows will be found on pages 6 to 11 of the brochure. There are thirty-one performances in all and the seating capacity for each performance is approaching 8000 people. Orders by post for tickets should be sent to the Edinburgh Festival Society, 11 Cambridge Street, Edinburgh 1, or to Military Tattoo Office, City Chambers, High Street, Edinburgh.

**FESTIVAL INFORMATION**

Information on the Festival and Programme Brochures, with ticket and accommodation Order Forms, may be obtained from the following:—

Edinburgh Festival Society, 11 Cambridge Street, Edinburgh 1, London Central Booking Office, 81 Piccadilly, London, W.1.

Scottish Tourist Board, 2 Rutland Place, Edinburgh 1.

British Travel Association, Information Centre, 64-65 St James's Street, London, S.W.1.

British Travel Association, 151 Bloor Street West, Toronto, 5, Canada.

British Travel Association, 680 Fifth Avenue, New York, New York 10019.

British Travel Association, 39 South La Salle Street, Chicago, Illinois 60603.

British Travel Association, 612 South Flower Street, Los Angeles, California 90017.

**TICKETS, ACCOMMODATION AND TRAVEL**

The Box Office opens on April 4th. Bookings will be by post only for the first few weeks and applications for tickets should be made on the ticket Order Form contained in the Programme Brochure. No priority is given to orders received before that date.

Counter booking will open on June 6. Edinburgh has a vast range of approved accommodation including Hotels, Guest Houses, University Halls of Residence, Private Households and Caravan Sites and the Festival Society will be pleased to assist visitors in obtaining accommodation.

You are recommended, when booking your tickets, to book your living accommodation on the Order Form on page 14 of the Brochure.

Accommodation and Ticket reservations can be made in the following offices:—

Edinburgh Festival Society, 11 Cambridge Street, Edinburgh 1, London Central Booking Office, 81 Piccadilly, London, W.1.

All branches of:—  
Thomas Cook & Sons, Ltd./Wagons-Lits.  
American Express Co., Incorporated.  
Dean & Dawson Ltd.

Next Year's Festival The 21st Edinburgh International Festival will be held from August 20-September 9 1967

This announcement was produced by The Scotsman Publications Limited, in collaboration with the Edinburgh Festival Society.