

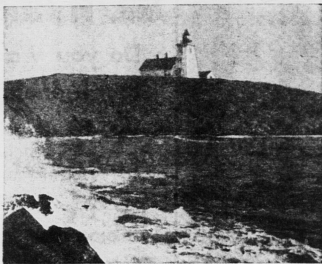
Islanders dragger fleet makes Souris its home

Souris is the center of two industries, farming and fishing. The loss of either of these two industries would be a tremendous blow to the economy of the area. The fishing industry has two divisions, both equally important to the area. The two divisions are the inshore fisherman and the dragger fleet.

Most of the people employed and the businesses connected with the dragger industry are from the Souris area. Thus, all monies made by the dragger fleet affect this area to a great extent. There are 20 draggers fishing out of Souris, and these draggers employ about 50 men. The average wage paid to these men is over \$100 each week of the season, which lasts about 30 weeks.

Each dragger must put large quantities of supplies, ranging from ice, fuel, groceries, to meals, and net parts. This affects plants, grocery stores, fuel dealers, bakeries, etc., and indirectly the people employed in these firms. Many firms have to hire extra employees just to handle the business from the dragger fleet.

The two Souris plants each employ over 100 persons to handle the fish landed by the dragger fleet.



THE FAMED SOURIS LIGHTHOUSE

ger fleet. This alone puts a large amount of money into most of the businesses of the community as most of the people employed are from this area, or do their business here.

Here again, employees of other businesses are indirectly affected. Each year, there is over 3,000,000 pounds of produce to be delivered to retailers in Canada and the United States, and this is done by local trucking firms.

The two fish plants, while forced to buy much of their supplies elsewhere, do, at the same time, do a big business with local firms, helping these firms, and once again, indirectly, the employees. Both companies pay taxes, donate heavily to local charities and in many other ways help to benefit the community. It has been estimated that the fishing industry is worth in the vicinity of \$3,000,000 annually.

Dragger fishing means good pay, but long hours; each trip takes a week

Dragger fishing is not the easiest method of making money. Rather it is hard, and sometimes expensive. And it takes intelligence.

It is a rare net that is ready-made. All nets usually come in parts and must be put together by the fishermen. And this is a task that cannot be trusted to just anyone. While it sounds fairly simple, building these nets is no mean task. A net that is not constructed in perfect proportion is not a "fishing net". This means that, the net does not catch the fish it is capable of, or what its immediate neighbors are catching.

The best way to describe a net is to call it a large bag. The mouth of the net is wide, and gradually tapers off to a finish. The top of the net has floats attached, and this keeps the top of the net floating in the water. On the bottom, is attached wooden rollers, or wheels. Their purpose is to keep the net moving on the bottom of the ocean. The mouth of the net is kept open by "doors". These (there are two) are large door shaped pieces of wood, weighted with metal. They are attached to the net with cables, and are placed one on each side of the net, and in front.

TOWED BY DRAGGER
If one could see below the sur-

face, the picture would be something like this. From the dragger to the ocean bed, would be two heavy cables of wire. Attached to each cable would be the doors, then more cable, and finally the net. The term "dragging" is used, because the net is towed or dragged behind the dragger. Depending on the supply of fish, the net is dragged anywhere from a half-hour to two hours.

A new net costs over \$1,000 and parts are always being replaced throughout the fishing season. Sometimes, the entire net is hooked on the bottom and must be replaced entirely. This replacement, or much mending can be expensive. This expense adds up, not only for new parts, but in time and fish lost. This can prove to be extra expensive, especially when the fish are plentiful.

WEEK AT A TIME:

When a dragger leaves port, it is usually for at least a week. During this week, fishing is carried on 24 hours a day. Fishing is done in the following manner. Upon reaching the fishing grounds, the net is lowered over the side, and towed or dragged for about two hours. After this time lapse, the net will be hauled back, or taken aboard the

CONTINUED ON PAGE 18-A

Three new draggers to be built

The dragger fleet fishing out of Souris has been gradually dwindling the past few years. Most of the losses have been due to fire, sinking and old age. But, relief is in sight. Three more draggers, two of them new, will be added to the Souris fleet during this year. One dragger is already on hand, and the two new ones are expected to be ready by the time the season opens.

The new additions are 90 feet long, which is about 15 feet longer than the present draggers, and carry a crew of 19 men, an increase of five. The new ships hold up to 200,000 pounds of fish, about double the capacity of the present draggers. It has been getting harder each year for the present fleet to furnish the needs of the two plants, but the new additions will go a long way towards keeping the plants working on a full time basis.

The two new boats are being constructed for two members of the present fleet. The veteran of the fleet, Jonas Bjornsson, formerly from Iceland, and the acknowledged "ace" of the present fleet will take one, while Egbert Boertien, formerly from Holland will be taking the other. Both of these men are expert fishermen, and are expected to do well with their new boats.

Association aids members

A new association to help the fishermen in the Eastern King's area was formed over the water in this month. The main aim of the new association is to better the lot of the inshore fishermen. They elected an executive and held, and are still holding regular meetings. The president of the new group is Harvey Poiré of Souris.

Some of the main aims of the group are to tighten licensing of fishermen, to investigate the points concerning trap limits, and to look into the employment of fish insurance. Benefits help or hinder the fishermen. There are, in the group about 200 fishermen from all over Eastern King's and they hope to unite with other such organizations over the rest of the Island, to help not only themselves, but the entire inshore fishing industry.

RECORD QUAKE
TOKYO (AP)—The city of Mito, 80 miles northeast of Tokyo, was jolted by an earthquake at 11:36 a.m. today. The central meteorological station said the tremor rolled through central Honshu. Maximum intensity at Mito was three on a scale of seven. Quakes of that strength normally do not cause damage to buildings.



ATTENTION ATLANTIC REGION FISHERMEN!

Increase your fishing productivity when you add a modern design, steel fishing trawler to your operation.

OUR FACILITIES INCLUDE:

- Steel Construction up to 5,000 tons
- Drydock facilities
- Skilled Technicians, Assuring Economy and Efficiency
- Marine Engineers
- Shipbuilding and Repairing

COMPLETE TRAWLER DESIGN:

Ferguson's provide complete Consulting Service under the direction of Mr. Peter Bood of London, Holland.

WE SPECIALIZE

in the construction of COMMERCIAL STEEL FISHING SIDE AND STERN TRAWLERS.

AND INVITE YOUR INQUIRIES

FERGUSON INDUSTRIES LIMITED
PICTOU, NOVA SCOTIA