

# All eyes on skirts at show

Trends that blossomed in the Paris couture spring collections gave way to a new fashion movement. Specifically, all eyes were on the skirts, a key element. They had every degree of movement from a little to a lot, and whether it was just a touch of soft waistline shirring or a great whirl of crisp pleats, new wool fabrics were key ingredients of the new effects. Pleats flattered throughout all the leading couturier houses — Lanvin, Givenchy, Balmain, and single front or back, and trousers. They gave a fresh and feminine direction to suits and were at their rippin' gait in heat-hershey sheath dresses or waisted flannels, and tightly textured wool tweeds. St. Laurent showed a total of no less than 26 pleated skirts in his collection, and his "faded" suit was in grey wool flannel with box pleats breaking below a light hip yoke.

The new attention to skirts also showed up in wrapped and paneled effects. The famous Chanel close navy blue woolen suit with a two-tiered skirt and pink wool tweed for a jacket with a three-tiered skirt, these skirts remained straight-angled, they are shirred into the waistband, not dartsed.

**COAT EFFECT**  
Also of special interest was the double-breasted skirt (yes, skirts), which repeated the double-breasted clinging of a jacket and gave the effect of a coat. Paris has a name for it — "troupe" — does.

Suits with similar continuation of line had buttons, a same effect. Courcues showed several of this type of suit, impeccably tailored, with a cream or cream gabardine and ship-ends. These clear, surfaced wool tweeds, the major fabric group also appeared in the heronbone weave suits by Dior and Rivetti.

Repetition of line in jacket and skirt was just one part of the elegant suit silhouettes prevalent in all the collections. Each designer achieved this in a different way, but the end result was a long-lined, long-bodied look.

**Beaded jackets** — very important — were one way. Short "fringe" and "dusky" jackets over a yoked skirt were another. Low-slung pleated jackets were still another. In length, jackets inclined toward high, which required the tailoring qualities of pure wool collars.

**COLLARS OPEN**  
The jacket story wouldn't be complete without noting its collars and closings. Collars were mainly open and rolled a way to the neck — perfect for the for-billan scarves and dachies. Cardin, whose house was the subject of the show, opened to the point where they turned into large collars. Many collections showed double collars, frequently with a peppy or colorful white cravat on top. Double-breasted jackets continued very strongly, but the newer closings were asymmetrical or at one side.

Breid's new fabric line trends, colors gave impetus to the Paris enthusiasm for suits. Lanvin's purplish shade of navy, probably to be called blueberry in this continent, sparkled through all the collections, particularly with spanking white touches. The neutrals, in all the infinite variety of wool textures and shadings, were the basic family of colors, ranging from ivory and pale pinks to dark brown. Next were pale peachy pinks, deepening to coral. Brilliant carmine red was the most dashing accent color.

Surely the most unexpected suit seen in Paris was the slack suit, which could mean a review of this forgotten outfit. Dior did a slack suit with wide legs and a spectacular sports look in a finely checked blue and tan. Courcues showed elegant slack suits as an innovation for two years in gabardine and double wool crepe.

**COAT EFFECT**  
Also of special interest was the double-breasted skirt (yes, skirts), which repeated the double-breasted clinging of a jacket and gave the effect of a coat. Paris has a name for it — "troupe" — does.

Suits with similar continuation of line had buttons, a same effect. Courcues showed several of this type of suit, impeccably tailored, with a cream or cream gabardine and ship-ends. These clear, surfaced wool tweeds, the major fabric group also appeared in the heronbone weave suits by Dior and Rivetti.

Repetition of line in jacket and skirt was just one part of the elegant suit silhouettes prevalent in all the collections. Each designer achieved this in a different way, but the end result was a long-lined, long-bodied look.

**Beaded jackets** — very important — were one way. Short "fringe" and "dusky" jackets over a yoked skirt were another. Low-slung pleated jackets were still another. In length, jackets inclined toward high, which required the tailoring qualities of pure wool collars.

**COLLARS OPEN**  
The jacket story wouldn't be complete without noting its collars and closings. Collars were mainly open and rolled a way to the neck — perfect for the for-billan scarves and dachies. Cardin, whose house was the subject of the show, opened to the point where they turned into large collars. Many collections showed double collars, frequently with a peppy or colorful white cravat on top. Double-breasted jackets continued very strongly, but the newer closings were asymmetrical or at one side.

Breid's new fabric line trends, colors gave impetus to the Paris enthusiasm for suits. Lanvin's purplish shade of navy, probably to be called blueberry in this continent, sparkled through all the collections, particularly with spanking white touches. The neutrals, in all the infinite variety of wool textures and shadings, were the basic family of colors, ranging from ivory and pale pinks to dark brown. Next were pale peachy pinks, deepening to coral. Brilliant carmine red was the most dashing accent color.

Surely the most unexpected suit seen in Paris was the slack suit, which could mean a review of this forgotten outfit. Dior did a slack suit with wide legs and a spectacular sports look in a finely checked blue and tan. Courcues showed elegant slack suits as an innovation for two years in gabardine and double wool crepe.

**COAT EFFECT**  
Also of special interest was the double-breasted skirt (yes, skirts), which repeated the double-breasted clinging of a jacket and gave the effect of a coat. Paris has a name for it — "troupe" — does.

Suits with similar continuation of line had buttons, a same effect. Courcues showed several of this type of suit, impeccably tailored, with a cream or cream gabardine and ship-ends. These clear, surfaced wool tweeds, the major fabric group also appeared in the heronbone weave suits by Dior and Rivetti.

Repetition of line in jacket and skirt was just one part of the elegant suit silhouettes prevalent in all the collections. Each designer achieved this in a different way, but the end result was a long-lined, long-bodied look.

**Beaded jackets** — very important — were one way. Short "fringe" and "dusky" jackets over a yoked skirt were another. Low-slung pleated jackets were still another. In length, jackets inclined toward high, which required the tailoring qualities of pure wool collars.

**COLLARS OPEN**  
The jacket story wouldn't be complete without noting its collars and closings. Collars were mainly open and rolled a way to the neck — perfect for the for-billan scarves and dachies. Cardin, whose house was the subject of the show, opened to the point where they turned into large collars. Many collections showed double collars, frequently with a peppy or colorful white cravat on top. Double-breasted jackets continued very strongly, but the newer closings were asymmetrical or at one side.

Breid's new fabric line trends, colors gave impetus to the Paris enthusiasm for suits. Lanvin's purplish shade of navy, probably to be called blueberry in this continent, sparkled through all the collections, particularly with spanking white touches. The neutrals, in all the infinite variety of wool textures and shadings, were the basic family of colors, ranging from ivory and pale pinks to dark brown. Next were pale peachy pinks, deepening to coral. Brilliant carmine red was the most dashing accent color.

Surely the most unexpected suit seen in Paris was the slack suit, which could mean a review of this forgotten outfit. Dior did a slack suit with wide legs and a spectacular sports look in a finely checked blue and tan. Courcues showed elegant slack suits as an innovation for two years in gabardine and double wool crepe.

**COAT EFFECT**  
Also of special interest was the double-breasted skirt (yes, skirts), which repeated the double-breasted clinging of a jacket and gave the effect of a coat. Paris has a name for it — "troupe" — does.

Suits with similar continuation of line had buttons, a same effect. Courcues showed several of this type of suit, impeccably tailored, with a cream or cream gabardine and ship-ends. These clear, surfaced wool tweeds, the major fabric group also appeared in the heronbone weave suits by Dior and Rivetti.

Repetition of line in jacket and skirt was just one part of the elegant suit silhouettes prevalent in all the collections. Each designer achieved this in a different way, but the end result was a long-lined, long-bodied look.

**Beaded jackets** — very important — were one way. Short "fringe" and "dusky" jackets over a yoked skirt were another. Low-slung pleated jackets were still another. In length, jackets inclined toward high, which required the tailoring qualities of pure wool collars.

**COLLARS OPEN**  
The jacket story wouldn't be complete without noting its collars and closings. Collars were mainly open and rolled a way to the neck — perfect for the for-billan scarves and dachies. Cardin, whose house was the subject of the show, opened to the point where they turned into large collars. Many collections showed double collars, frequently with a peppy or colorful white cravat on top. Double-breasted jackets continued very strongly, but the newer closings were asymmetrical or at one side.

Breid's new fabric line trends, colors gave impetus to the Paris enthusiasm for suits. Lanvin's purplish shade of navy, probably to be called blueberry in this continent, sparkled through all the collections, particularly with spanking white touches. The neutrals, in all the infinite variety of wool textures and shadings, were the basic family of colors, ranging from ivory and pale pinks to dark brown. Next were pale peachy pinks, deepening to coral. Brilliant carmine red was the most dashing accent color.

Surely the most unexpected suit seen in Paris was the slack suit, which could mean a review of this forgotten outfit. Dior did a slack suit with wide legs and a spectacular sports look in a finely checked blue and tan. Courcues showed elegant slack suits as an innovation for two years in gabardine and double wool crepe.

**COAT EFFECT**  
Also of special interest was the double-breasted skirt (yes, skirts), which repeated the double-breasted clinging of a jacket and gave the effect of a coat. Paris has a name for it — "troupe" — does.

Suits with similar continuation of line had buttons, a same effect. Courcues showed several of this type of suit, impeccably tailored, with a cream or cream gabardine and ship-ends. These clear, surfaced wool tweeds, the major fabric group also appeared in the heronbone weave suits by Dior and Rivetti.

Repetition of line in jacket and skirt was just one part of the elegant suit silhouettes prevalent in all the collections. Each designer achieved this in a different way, but the end result was a long-lined, long-bodied look.

**Beaded jackets** — very important — were one way. Short "fringe" and "dusky" jackets over a yoked skirt were another. Low-slung pleated jackets were still another. In length, jackets inclined toward high, which required the tailoring qualities of pure wool collars.

**COLLARS OPEN**  
The jacket story wouldn't be complete without noting its collars and closings. Collars were mainly open and rolled a way to the neck — perfect for the for-billan scarves and dachies. Cardin, whose house was the subject of the show, opened to the point where they turned into large collars. Many collections showed double collars, frequently with a peppy or colorful white cravat on top. Double-breasted jackets continued very strongly, but the newer closings were asymmetrical or at one side.

Breid's new fabric line trends, colors gave impetus to the Paris enthusiasm for suits. Lanvin's purplish shade of navy, probably to be called blueberry in this continent, sparkled through all the collections, particularly with spanking white touches. The neutrals, in all the infinite variety of wool textures and shadings, were the basic family of colors, ranging from ivory and pale pinks to dark brown. Next were pale peachy pinks, deepening to coral. Brilliant carmine red was the most dashing accent color.

Surely the most unexpected suit seen in Paris was the slack suit, which could mean a review of this forgotten outfit. Dior did a slack suit with wide legs and a spectacular sports look in a finely checked blue and tan. Courcues showed elegant slack suits as an innovation for two years in gabardine and double wool crepe.

**COAT EFFECT**  
Also of special interest was the double-breasted skirt (yes, skirts), which repeated the double-breasted clinging of a jacket and gave the effect of a coat. Paris has a name for it — "troupe" — does.

Suits with similar continuation of line had buttons, a same effect. Courcues showed several of this type of suit, impeccably tailored, with a cream or cream gabardine and ship-ends. These clear, surfaced wool tweeds, the major fabric group also appeared in the heronbone weave suits by Dior and Rivetti.

Repetition of line in jacket and skirt was just one part of the elegant suit silhouettes prevalent in all the collections. Each designer achieved this in a different way, but the end result was a long-lined, long-bodied look.

**Beaded jackets** — very important — were one way. Short "fringe" and "dusky" jackets over a yoked skirt were another. Low-slung pleated jackets were still another. In length, jackets inclined toward high, which required the tailoring qualities of pure wool collars.

**COLLARS OPEN**  
The jacket story wouldn't be complete without noting its collars and closings. Collars were mainly open and rolled a way to the neck — perfect for the for-billan scarves and dachies. Cardin, whose house was the subject of the show, opened to the point where they turned into large collars. Many collections showed double collars, frequently with a peppy or colorful white cravat on top. Double-breasted jackets continued very strongly, but the newer closings were asymmetrical or at one side.

Breid's new fabric line trends, colors gave impetus to the Paris enthusiasm for suits. Lanvin's purplish shade of navy, probably to be called blueberry in this continent, sparkled through all the collections, particularly with spanking white touches. The neutrals, in all the infinite variety of wool textures and shadings, were the basic family of colors, ranging from ivory and pale pinks to dark brown. Next were pale peachy pinks, deepening to coral. Brilliant carmine red was the most dashing accent color.

Surely the most unexpected suit seen in Paris was the slack suit, which could mean a review of this forgotten outfit. Dior did a slack suit with wide legs and a spectacular sports look in a finely checked blue and tan. Courcues showed elegant slack suits as an innovation for two years in gabardine and double wool crepe.

**COAT EFFECT**  
Also of special interest was the double-breasted skirt (yes, skirts), which repeated the double-breasted clinging of a jacket and gave the effect of a coat. Paris has a name for it — "troupe" — does.

Suits with similar continuation of line had buttons, a same effect. Courcues showed several of this type of suit, impeccably tailored, with a cream or cream gabardine and ship-ends. These clear, surfaced wool tweeds, the major fabric group also appeared in the heronbone weave suits by Dior and Rivetti.

Repetition of line in jacket and skirt was just one part of the elegant suit silhouettes prevalent in all the collections. Each designer achieved this in a different way, but the end result was a long-lined, long-bodied look.

**Beaded jackets** — very important — were one way. Short "fringe" and "dusky" jackets over a yoked skirt were another. Low-slung pleated jackets were still another. In length, jackets inclined toward high, which required the tailoring qualities of pure wool collars.

**COLLARS OPEN**  
The jacket story wouldn't be complete without noting its collars and closings. Collars were mainly open and rolled a way to the neck — perfect for the for-billan scarves and dachies. Cardin, whose house was the subject of the show, opened to the point where they turned into large collars. Many collections showed double collars, frequently with a peppy or colorful white cravat on top. Double-breasted jackets continued very strongly, but the newer closings were asymmetrical or at one side.

Breid's new fabric line trends, colors gave impetus to the Paris enthusiasm for suits. Lanvin's purplish shade of navy, probably to be called blueberry in this continent, sparkled through all the collections, particularly with spanking white touches. The neutrals, in all the infinite variety of wool textures and shadings, were the basic family of colors, ranging from ivory and pale pinks to dark brown. Next were pale peachy pinks, deepening to coral. Brilliant carmine red was the most dashing accent color.

Surely the most unexpected suit seen in Paris was the slack suit, which could mean a review of this forgotten outfit. Dior did a slack suit with wide legs and a spectacular sports look in a finely checked blue and tan. Courcues showed elegant slack suits as an innovation for two years in gabardine and double wool crepe.



## To be well dressed — observe rules

When is a man well dressed? "After all," he points out, "it is the wife who is usually responsible for those telling accessories — our shirts, socks, handkerchiefs, ties, shoes, and shoes. A man who cares enough to know and observe the rules currently indicative of good taste is well dressed," says Rick Putnam, a Montreal men's wear specialist with Du Pont of Canada.

"He can always break the rules to express his own individuality, but he must do so knowingly."

Unlike the breadth of scope in women's fashions, the margin for error in men's business clothes is often very narrow, Mr. Putnam points out.

"It can hinge on as little as a half-inch of shirt cuff or a two-inch of tie, and the result which is deplorable for the well-

dressed executive. A breast pocket containing anything but a simple folded handkerchief can also lose him points."

**MILITARY INFLUENCE**  
There is a spit and polish discipline still clinging to men's clothing which Mr. Putnam believes is partly due to the influence the militia have long had on basic design and detail. Sleeve buttons, for instance, were introduced by Napoleon in shirts and ties and also came to his men from using their sleeves as handkerchiefs.

Mr. Putnam feels that it is easier for a business man to dress knowledgeably if his wife is also in the know about matters which is deplorable for the well-

"After all," he points out, "it is the wife who is usually responsible for those telling accessories — our shirts, socks, handkerchiefs, ties, shoes, and shoes. A man who cares enough to know and observe the rules currently indicative of good taste is well dressed," says Rick Putnam, a Montreal men's wear specialist with Du Pont of Canada.

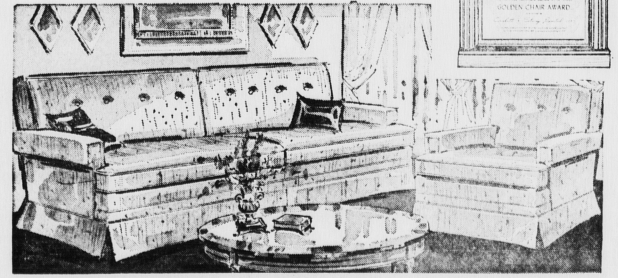
"He can always break the rules to express his own individuality, but he must do so knowingly."

Unlike the breadth of scope in women's fashions, the margin for error in men's business clothes is often very narrow, Mr. Putnam points out.

"It can hinge on as little as a half-inch of shirt cuff or a two-inch of tie, and the result which is deplorable for the well-

## FURNITURE FASHIONS

You can have a beautiful home ... at a price you can afford!



Comfort, style, color cover --- blended to provide in your home the atmosphere, ease and charm your body and your eye desire ---

It truly is easy to have a Beautiful home at the price you can afford when you are assisted by the skilled salesmen at

**CROCKETT & STOREY LTD.**  
dedicated to home improvement  
Kent Street      Charlottetown

## Elegance is theme for new handbags

The biggest hand in the Easter Parade will go to you as you swing down the avenue carrying an elegant leather handbag.

Whatever the handbag's style, the leather and the lines will rate shapes and sizes vary, reports leather industries, but generally they are deeper and softer in outline this season. Contributing their own elegance to these items — swingers are many distinctive leathers — grain, smooth, genuine patent, wax, embossed, and suede leathers.

Fashion detailing in a feminine mood enhances this spring's handbags, from the pouch and the box bag to the envelope. Cut-outs, with contrasting or embossed leather underlays, are used to charming effect. Scalloped, daintily brushed gold hardware, and self-leather trim are other style notes used to point up the beauty of the leather texture. With the accent on the leather, it's wise to look for the black — and gold "Genuine Leather" tag when you're Easter-shopping to insure you get the good looks and long life that a leather hand bag provides.

**SIMPLE, BUT SMART**  
If you're a gal who likes to be casual — even at Eastertime, the unadorned satchel or tote in grained, waxy or smooth leather is the bag for you. Simple — but smart enough for any fashion promenade — these leather handbags for the tailored last are trim, yet proportioned to hold all the essentials and more.

Easter evening and other spring nights will see the exclusive "little leathers" — enveloping, clutches and pouches in miniature — showing off the luster, sheen of polished, lustre, suede and embossed leathers. A pointer texture, a glimmer of gold or a sponson of silver add their radiance on clasp or tiny ornament. Popular this season is the gold bar closing straight across the top of an envelope with an evening-type scallop — seen with and without jewel trim.

Pale and pretty are the leather colors in spring bags. Pastels to put a rainbow to shame — blue, pink, yellow, green. Bone, off-white and "stuck-in-tint" continue in the light vein. A little important will be navy, bright red and blue, and the "natural leather" colors.

the look of Fashion Is the Sunter Look

... spring fashions now on display

**SUNTER'S Ladies Wear**  
Great George Street      Charlottetown

**MILITARY TOUCH**  
The newest in spring styling from Futurama for big and little sister. All wool double-knit Fort Henry military knit with double-breasted effects and detachable cape. Fitted waistline leads to gently flared skirt. Cape features leather trim around edges and collar.



Easter's Crowning Glories

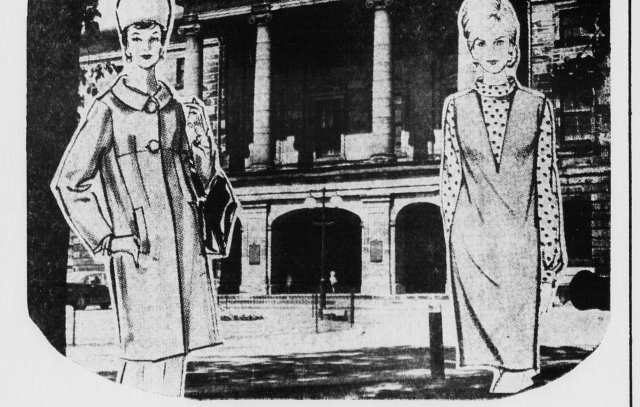
Happy new season... happy new hats that sing of spring and the new allure that will be yours when you wear one. Fashion's smoother hairdos were meant to peek from behind a quality hat from Adella's.

**ADELLA'S MILLINERY**  
Grafton St.      Charlottetown

**island furriers ltd.**

... fashions for spring presented in the foreground of the historic Provincial Building

A distinctive setting for eye-catching Fashions! Here are just two of the many new and appealing Spring creations now on display... won't you call in today and add fashion plus to your Spring and Easter?



**island furriers ltd.**  
79 Grafton St.      Dial 2-1278