

## MODERN FEMALE'S ATTIRE STUMPS TAILOR, CUTTER

LONDON (AP)—Tailor and Cutter—magazine arbiter of British male style—acknowledges that the modern, thin-clad female has it stumped. Says the lead editorial in the magazine's current issue: "The weaker sex go through most of the year dressed in considerably less clothes than their male equivalents. . . is their (the ladies') avoidance of bruchitis due to a basic hardihood unknown to men, or has half a century of thinned-down garments merely produced a resistance to the cold via a kind of environmental mutation?" In Victorian and Edwardian days, of course, British women

Press 60-stock average rose 3.7 to 283.3 and the Dow Jones average of 30 industrial stocks climbed 9.73. Trading was active and on during the week with volume totalling 24,140,870 shares against 19,368,730 the preceding week when there were only three sessions because of the day of mourning for President Kennedy Monday and the U.S. Thanksgiving holiday Thursday. The five most-active stocks on the New York Stock Exchange: RCA, up 1/4 at 97 1/2 on \$90,400 shares; Sperry Rand, up 1/2 at 18 1/2; Westinghouse Electric, off 3/4 at 33 1/2; Chrysler, up 3/4 at 28 1/2; and General Telephone, up 1/2 at 31 1/2. The five most-active stocks on the American Stock Exchange: Syntex, up 10 1/2 at 92 1/2 on 50,000 shares; Wabash Oil, up 1/2 at 3 1/2; TWA Warrants, up 1/2 at 15 1/2; Canada Southern Petroleum, up 1/2 at 4 1/2; and Kin-Ark Oil, up 1/2 at 3 1/2.

## U.S. Stock Market Touched All-Time Record Last Week

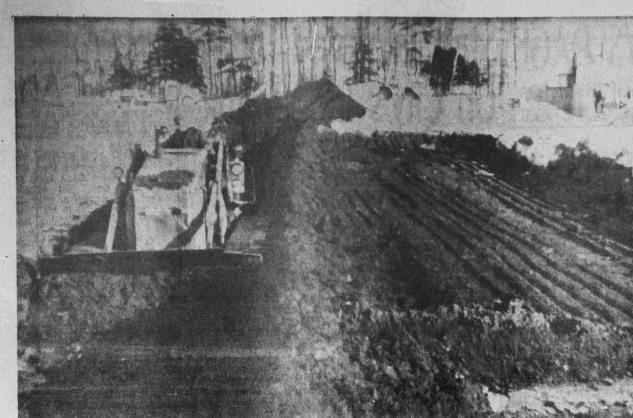
NEW YORK (AP)—Rising hopes for an early U.S. income tax cut sent the stock market to an all-time high last week. A rally started Wednesday and carried through strongly Thursday on tax legislation developments in Washington. Senate Republican Leader Pickens told President Johnson that he thought he could assure him that there will be a tax-cut bill next year and that it will be retroactive to Jan. 1. The new president continued bipartisan efforts to push the tax-cut legislation.

**Adella's**

- Sophisticated Millinery for a discerning clientele Accessories to match
- Gift Certificates

**Adella's Millinery**

177 Grafton Street  
Charlotte



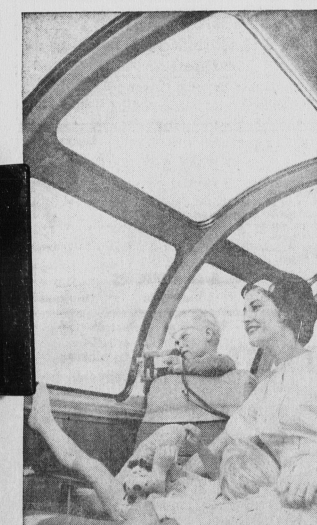
## SENIOR HOUSING UNDERWAY AT O'LEARY

Williams and Murphy of Summerside started the excavation for the O'Leary senior citizens housing units Thursday after rolling back

the snow banks. They were awarded the contract for four units at \$36,719. This is one of the six similar projects to be erected this winter under the winter works program in Island communities. These four units are located 500 yards west of the Community Hospital on the corner of Parkview Drive where the five new co-op houses were built two years ago. The building will have an utility unit in the centre consisting of washing and drying facilities and furnace room. Each unit will consist of a livingroom, kitchen, bathroom and bedroom. These units will be serviced by the new sewer line installed last spring. Occupancy is expected in early June if weather permits.

## Metal-Working Industry Heads For December Record

CLEVELAND (AP)—Metal-working business in December will set a record for the month and will help carry the U.S. industry's sales to a new high of \$174,000,000 this year, Steel magazine predicts. Metalworking sales in 1962 were \$165,000,000. The metal-working weekly says demand for steel and other materials is accelerating as many manufacturers prepare for a big first quarter in 1964. The publication also predicts December steel shipments will exceed November's and that this week's production in U.S. mills is almost certain to surpass last month's. TEHRAN (AP)—Snow plows have been trying to cut through heavy snow drifts to a remote pass in northwest Iran where 12 persons were reported from death in a snow-trapped convoy. The Tehran newspaper Keshan said Saturday six children were among the dead in the convoy of 20 buses and trucks — carrying about 300 persons—blocked since the middle of last week by massive snow drifts at Haiman pass, near the Soviet border.



## NEW LOW TRAIN FARE EVERY DAY TO WINNIPEG \$35

That's the incredibly low one-way passage fare on the new Faresaver Plan. And look what coach travel on The Canadian gives you: Reserved reclining seats with full-length leg rests, Scenic Dome-top service, and music. And you can purchase delicious meals in the Dining Room or Skyline Coffee Shop. The Faresaver Plan is also available for Alcoholic (meals and passage) in tourist and standard sleeping cars. See your Travel Agent or any Canadian Pacific office.

SAINT JOHN WINNIPEG One-way coach passage fare To Montreal \$14.95 To Calgary/Edmonton To other points through Steel Faresaver Plan to other points Information and reservations, 692-1361

**\$35**

**TRAVEL Canadian Pacific**

TRAINS | TRUCKS | SHIPS | PLANES | HOTELS | TELECOMMUNICATIONS  
WORLD'S MOST COMPLETE TRANSPORTATION SYSTEM

[[ If you're a financial wizard, you don't have to read this ad ]]

## Payday. Bills. Expenses. Fun Money. Savings.

### How to keep track? Easy!

## Get a Pocketbank

A small book. But a mighty big purpose: it records your progress in saving!

This is a Personal Chequing Account chequebook complete with its own deposit slips. A convenient and low-cost way to paying bills. Saves time and trouble too.

This handy little card is a convenient aid to help you balance your income against your needs. Successful budgeting has to be put on paper! That's why the people of "The Bank" have devised this really operated money management system for you. Use it and you'll really be able to enjoy your income . . . and see your savings grow.

Want to deposit money in your Savings Account? Your deposit slips are right here.

In the front: a convenient cheque record for listing deposits and cheques. Helps you to record payments and keep track of expenses.

One of the exclusive features that makes Pocketbank such a good idea—The "Money Manager". It actually helps you to organize your money! Let us figure out the right amount for every need . . . enables you to anticipate expense before it happens and set aside the necessary funds. This new idea takes care of every dollar and does away with doubt on paydays.

It's amazing that nobody ever thought of Pocketbank before. Because when you really think about it, it's the only logical way to handle money wisely. Pocketbank is a Personal Chequing Account, a Savings Account and a simplified money management system all combined in a handsome wallet.

It saves you time. Does for the individual what accounting records do for business concerns. Helps you to keep control of your money all the time. How do you get one? Just walk into any branch of "The Bank" and ask. The friendly people there would love to show it to you. And it only costs 24¢.

**THE TORONTO-DOMINION BANK**

Where people make the difference

J. P. COOKE, Manager Queen & Kens Streets



## Look who's buying the SCOUT-



and countless more ranging from country doctors and Arctic missionaries to rural mail carriers and surveyors. Why is the Scout already sales leader in 4-wheel drive? The fact is, it can go almost anywhere . . . thanks to 4-wheel drive, rugged power and extra clearance. And because it converts four ways (from a stripped-for-action work-horse to a steel-bodied station wagon), the Scout is the handiest unit on or off the road. See and drive it—you're sure to agree!



**INTERNATIONAL 4-WHEEL DRIVE SCOUT**

INTERNATIONAL HARVESTER COMPANY OF CANADA, LIMITED

**INTERNATIONAL HARVESTER COMPANY OF CANADA, LIMITED**

255 Thorne Avenue, Saint John, New Brunswick

Charlottetown  
SUNNY ISLE FARMS LIMITED

Tignish, P.E.I.  
E. C. Gaudette & Sons Ltd.

Kensington, P.E.I.  
Summerside, P.E.I.  
Wellington, P.E.I.  
Wellington Sales & Service

Kensington Feed Service Ltd.