

# ISLANDER DROVE Alberion and West Prince

2 The Guardian, Charlottetown, Wed. Aug. 14, 1963.

## Fatal Fall From Ferry Is Termed Accidental

SUMMERSIDE—A coroner's jury ruled the death by drowning of four-year-old Michael Romain Van Dorpe on July 15 "accidental" at the latest presided over by Coroner Dr. W.E. Callaghan last evening.

George R. McManis acted for the Crown. The victim, one of five children of Mr. and Mrs. Romain Henry Van Dorpe of Dartmouth, N.S., fell from the car deck of the MV Abegweit into Northumberland Strait approximately three miles outside Borden while accompanying his parents on a visit to Prince Edward Island.

Last evening Mr. Van Dorpe told of taking his five children on a tour of the boat deck of the Abegweit that day and of their return to the car deck. He said he had Michael by the hand until they had returned to the car deck.

Following their tour, he said, he and the five children were standing in the middle of the car deck aft and had not known the child had left his side until he sighted Michael David Henry, ran and told his younger brother had fallen off the car deck.

David, in a statement to Capt. Allan Burchill of the RCMP, said he had run on the car deck and got right behind the child. He said he was struck across the opening on the stern of the ship while the car was embarking or leaving the ferry.

Captain Helge Larsen of the MV Abegweit said that the alarm of a person overboard was given at 3:20 that afternoon and that the lifeboat had been lowered into the water approximately eight minutes later and that the child was picked up at about 3:25, some 23 minutes later.

The passenger on the ferry, Isadore E. Simard of Masoué, Que., applied motion picture insurance on the victim for some 60 minutes until Dr. Saunders of Summerside, who is in the herd of Simmons and MacFarlane at Summerside.

**DISTINGUISHED HIMSELF**  
The Golden Monarch bull took the senior and grand championship ribbons and Rankinella Spottanema the reserve senior and grand. This animal was bred in the herd of Lester Rankine and Son and distinguished himself by placing so well in such distinguished company. He is owned and shown by Cyrus S. Eaton, a former Nova Scotia.

**Richard B. Smith and Sons, New Glasgow, showed the reserve senior and reserve grand female awards.**  
Richard B. Smith and Sons, New Glasgow, showed the reserve senior and reserve grand female awards. The senior and grand female championship awards were taken by H. Lyle Boswell and Son, Marshfield, with Tullio Fashan leader a cow that was placed reserve grand several years ago as a junior calf.

**The Boswells who had a dozen red ribbons, also had the junior female champion and the reserve junior male awards.**  
Mr. Hutzel who has been judged for six years, will place the Shorthorns at the big Indiana State Fair in the near future. He was also in the water judge of the quality cattle being shown here and the show ring according to the show.

**"You have the finest cattle show ring set of Montreal," observed Mr. Eaton. "This bull did our herd a great deal of good," observed Mr. Hutzel who said the grandson of the Kinellar bull in the big Coliseum yesterday.**

**Heavy classes found Holstein Judge J.M. Fraser, Streetville, Ontario yesterday and ringside in the show ring at the Ontario Fair.**  
Most interesting result of the show was the junior female championship which Irving Boswell, Marshfield, won over Reflection Pond Hope Perfect Genie, owned by her class.

**The Boswells are Scotch Shorthorn men and he and his father, H. Lyle Boswell, dominated the friendly young American, but Irving Boswell says he bought a Holstein cow that was the star of the show.**

**Elderly Man Is Rescued At S'side**  
SUMMERSIDE—Quick action by Amos Gaudin, Summerside, has saved the life of 84-year-old Harry Clow, who was accidentally knocked off the wharf by a car yesterday afternoon.

**On the wharf following his return from yesterday's fishing action off the south shore, Mr. Clow was seen by a passerby looking along the side of the wharf. "And there he was, wobbling away on his hands and feet a couple of feet from the side of the wharf."**

**Mr. Gaudin immediately jumped in after the "foundering" man and with the help of persons on the wharf had little difficulty in getting the former fisherman of more than 50 years of sea-duty back to safety.**

**Mr. Clow explained that he had been seated on the curb of the wharf watching some of the boat's return when he was accidentally struck by the bumper of the car.**  
"I guess he didn't see me," said Mr. Clow, who escaped without serious injury, a cool, refreshing dip in a hot day.

...ing the child.  
**SAID SUNDANCEBY**  
Dr. Callaghan commented that no doubt this was an accident, but in his opinion, unnecessary one. He added that passengers presume they have protection from passengers on the ferry and that part of the ship where the child had fallen off gave little protection.

Since the accident heavy canvas has been installed along with the chains in the area where the cars embark or leave the ship.

Also giving testimony last evening was Dr. J.E. Burge of Charlottetown, who was the victim the morning following the accident.

Members of the jury were Donald Alexander MacDonald, Carlston, foreman; Stephen Ralph DesBois, Borden; Leo Warren, Borden; Wilfred Francis Kiggins, Borden; Ralph Wayne Leary, Borden; Russell Bell, Borden.

## Traffic Regulations Set For Big Parade Today

The parade and for this reason the police are asking other spectators to be particularly courteous in observing the following regulations and requests.

(1) — No cars will be allowed to park along the parade route. The route is outlined in a story and map in today's special edition on the Gold Cup and Saucer Parade.

(2) — All spectators must remain behind the curb on the sidewalk. Down and serious accidents can result from spectators spreading out on the streets and he particularly cautioned a gear in a t children being allowed too near the race horse saddle horses and ponies taking part.

(3) — The parade route has been designed to include two hospitals and the Provincial Sanatorium. The route is outlined on the map situated on the lavans to watch the parade.

**Hogs Showed**  
Hogs shown by Almond Boswell and Reserve Grand Champion and Reserve Grand Champion of Bridgetown was featured in the show of the day. The winners in several classes and also had the Reserve Junior Championships.

**Volunteers Are Requested For Crowd Control Duties**  
There is an air of excitement noticeable as detailed arrangements for Friday's Gold Cup and Saucer parade near completion. Looming large in the preparation of the show is the need for traffic and spectator control.

**Magistrate Offers Youth Education In S'side Or Prison**  
SUMMERSIDE — Michael Joseph Sonier, 16, of Summerside, who was charged with disturbing the peace at the Summerside show, was given a choice of either attending school or getting an education in Dorchester Penitentiary.

**Wreckage Spotted**  
COPENHAGEN (AP) — The wreckage of a Danish jet, the Catalina, missing in southern Greenland since Saturday with 12 aboard, was spotted on the ice Tuesday night, the air command announced. There was no report of survivors.

**Announce New Healing Substance... Shrinks Piles, Checks Itch**  
Exclusive healing substance proven to shrink hemorrhoids... and repair damaged tissue.

**Beautiful Jerseys**  
A couple of beautiful Jersey betters are shown here in the championship circle in the Coliseum at the Provincial Exhibition.

**Young American Places Large Shorthorn Class**  
One of the youngest judges ever to place classes at the Provincial Exhibition, and what may have been the largest class of mature Shorthorn cows were featured here yesterday at the Coliseum at the Provincial Exhibition.

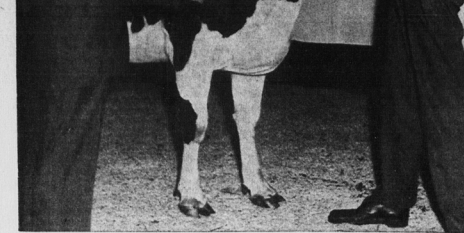
**Wrecker's Tale**  
Irving Boswell, Marshfield, right, accepts a silver tray donated by the Royal Bank of Canada here for the 1st in a female champion in the Holstein ring at the Provincial Exhibition.

**Wrecker's Tale**  
Irving Boswell, Marshfield, right, accepts a silver tray donated by the Royal Bank of Canada here for the 1st in a female champion in the Holstein ring at the Provincial Exhibition.

**Wrecker's Tale**  
Irving Boswell, Marshfield, right, accepts a silver tray donated by the Royal Bank of Canada here for the 1st in a female champion in the Holstein ring at the Provincial Exhibition.



Irving Boswell, Marshfield, right, accepts a silver tray donated by the Royal Bank of Canada here for the 1st in a female champion in the Holstein ring at the Provincial Exhibition.



Irving Boswell, Marshfield, right, accepts a silver tray donated by the Royal Bank of Canada here for the 1st in a female champion in the Holstein ring at the Provincial Exhibition.

## HOLSTEIN HAS HISTORY

Exhibition. Making the presentation is Assistant Manager L. Blaine Gregg. Mr. Boswell, a prominent Shorthorn breeder, got this heifer out of an old Holstein cow he purchased a few years ago, and was naturally delighted with the win against some strong competition from veteran Holstein breeders.

## Young American Places Large Shorthorn Class

One of the youngest judges ever to place classes at the Provincial Exhibition, and what may have been the largest class of mature Shorthorn cows were featured here yesterday at the Coliseum at the Provincial Exhibition.

## Wrecker's Tale

Irving Boswell, Marshfield, right, accepts a silver tray donated by the Royal Bank of Canada here for the 1st in a female champion in the Holstein ring at the Provincial Exhibition.

## Wrecker's Tale

Irving Boswell, Marshfield, right, accepts a silver tray donated by the Royal Bank of Canada here for the 1st in a female champion in the Holstein ring at the Provincial Exhibition.

## Wrecker's Tale

Irving Boswell, Marshfield, right, accepts a silver tray donated by the Royal Bank of Canada here for the 1st in a female champion in the Holstein ring at the Provincial Exhibition.

## Wrecker's Tale

Irving Boswell, Marshfield, right, accepts a silver tray donated by the Royal Bank of Canada here for the 1st in a female champion in the Holstein ring at the Provincial Exhibition.

## Wrecker's Tale

Irving Boswell, Marshfield, right, accepts a silver tray donated by the Royal Bank of Canada here for the 1st in a female champion in the Holstein ring at the Provincial Exhibition.

## Wrecker's Tale

Irving Boswell, Marshfield, right, accepts a silver tray donated by the Royal Bank of Canada here for the 1st in a female champion in the Holstein ring at the Provincial Exhibition.

## Wrecker's Tale

Irving Boswell, Marshfield, right, accepts a silver tray donated by the Royal Bank of Canada here for the 1st in a female champion in the Holstein ring at the Provincial Exhibition.

## Wrecker's Tale

Irving Boswell, Marshfield, right, accepts a silver tray donated by the Royal Bank of Canada here for the 1st in a female champion in the Holstein ring at the Provincial Exhibition.

## Wrecker's Tale

Irving Boswell, Marshfield, right, accepts a silver tray donated by the Royal Bank of Canada here for the 1st in a female champion in the Holstein ring at the Provincial Exhibition.

## Wrecker's Tale

Irving Boswell, Marshfield, right, accepts a silver tray donated by the Royal Bank of Canada here for the 1st in a female champion in the Holstein ring at the Provincial Exhibition.

## Wrecker's Tale

Irving Boswell, Marshfield, right, accepts a silver tray donated by the Royal Bank of Canada here for the 1st in a female champion in the Holstein ring at the Provincial Exhibition.

## Wrecker's Tale

Irving Boswell, Marshfield, right, accepts a silver tray donated by the Royal Bank of Canada here for the 1st in a female champion in the Holstein ring at the Provincial Exhibition.

## Wrecker's Tale

Irving Boswell, Marshfield, right, accepts a silver tray donated by the Royal Bank of Canada here for the 1st in a female champion in the Holstein ring at the Provincial Exhibition.

## Wrecker's Tale

Irving Boswell, Marshfield, right, accepts a silver tray donated by the Royal Bank of Canada here for the 1st in a female champion in the Holstein ring at the Provincial Exhibition.

## Wrecker's Tale

Irving Boswell, Marshfield, right, accepts a silver tray donated by the Royal Bank of Canada here for the 1st in a female champion in the Holstein ring at the Provincial Exhibition.

## Wrecker's Tale

Irving Boswell, Marshfield, right, accepts a silver tray donated by the Royal Bank of Canada here for the 1st in a female champion in the Holstein ring at the Provincial Exhibition.

## Wrecker's Tale

Irving Boswell, Marshfield, right, accepts a silver tray donated by the Royal Bank of Canada here for the 1st in a female champion in the Holstein ring at the Provincial Exhibition.

## Wrecker's Tale

Irving Boswell, Marshfield, right, accepts a silver tray donated by the Royal Bank of Canada here for the 1st in a female champion in the Holstein ring at the Provincial Exhibition.

## Wrecker's Tale

Irving Boswell, Marshfield, right, accepts a silver tray donated by the Royal Bank of Canada here for the 1st in a female champion in the Holstein ring at the Provincial Exhibition.

## Wrecker's Tale

Irving Boswell, Marshfield, right, accepts a silver tray donated by the Royal Bank of Canada here for the 1st in a female champion in the Holstein ring at the Provincial Exhibition.

## Wrecker's Tale

Irving Boswell, Marshfield, right, accepts a silver tray donated by the Royal Bank of Canada here for the 1st in a female champion in the Holstein ring at the Provincial Exhibition.

## Wrecker's Tale

Irving Boswell, Marshfield, right, accepts a silver tray donated by the Royal Bank of Canada here for the 1st in a female champion in the Holstein ring at the Provincial Exhibition.

## Wrecker's Tale

Irving Boswell, Marshfield, right, accepts a silver tray donated by the Royal Bank of Canada here for the 1st in a female champion in the Holstein ring at the Provincial Exhibition.

## Wrecker's Tale

Irving Boswell, Marshfield, right, accepts a silver tray donated by the Royal Bank of Canada here for the 1st in a female champion in the Holstein ring at the Provincial Exhibition.

## Wrecker's Tale

Irving Boswell, Marshfield, right, accepts a silver tray donated by the Royal Bank of Canada here for the 1st in a female champion in the Holstein ring at the Provincial Exhibition.

## Wrecker's Tale

Irving Boswell, Marshfield, right, accepts a silver tray donated by the Royal Bank of Canada here for the 1st in a female champion in the Holstein ring at the Provincial Exhibition.

## Wrecker's Tale

Irving Boswell, Marshfield, right, accepts a silver tray donated by the Royal Bank of Canada here for the 1st in a female champion in the Holstein ring at the Provincial Exhibition.

## Wrecker's Tale

Irving Boswell, Marshfield, right, accepts a silver tray donated by the Royal Bank of Canada here for the 1st in a female champion in the Holstein ring at the Provincial Exhibition.

## Wrecker's Tale

Irving Boswell, Marshfield, right, accepts a silver tray donated by the Royal Bank of Canada here for the 1st in a female champion in the Holstein ring at the Provincial Exhibition.

## Wrecker's Tale

Irving Boswell, Marshfield, right, accepts a silver tray donated by the Royal Bank of Canada here for the 1st in a female champion in the Holstein ring at the Provincial Exhibition.

## Wrecker's Tale

Irving Boswell, Marshfield, right, accepts a silver tray donated by the Royal Bank of Canada here for the 1st in a female champion in the Holstein ring at the Provincial Exhibition.

## Wrecker's Tale

Irving Boswell, Marshfield, right, accepts a silver tray donated by the Royal Bank of Canada here for the 1st in a female champion in the Holstein ring at the Provincial Exhibition.

## Wrecker's Tale

Irving Boswell, Marshfield, right, accepts a silver tray donated by the Royal Bank of Canada here for the 1st in a female champion in the Holstein ring at the Provincial Exhibition.

## Wrecker's Tale

Irving Boswell, Marshfield, right, accepts a silver tray donated by the Royal Bank of Canada here for the 1st in a female champion in the Holstein ring at the Provincial Exhibition.

## Wrecker's Tale

Irving Boswell, Marshfield, right, accepts a silver tray donated by the Royal Bank of Canada here for the 1st in a female champion in the Holstein ring at the Provincial Exhibition.

## Wrecker's Tale

Irving Boswell, Marshfield, right, accepts a silver tray donated by the Royal Bank of Canada here for the 1st in a female champion in the Holstein ring at the Provincial Exhibition.

## Wrecker's Tale

Irving Boswell, Marshfield, right, accepts a silver tray donated by the Royal Bank of Canada here for the 1st in a female champion in the Holstein ring at the Provincial Exhibition.

## Wrecker's Tale

Irving Boswell, Marshfield, right, accepts a silver tray donated by the Royal Bank of Canada here for the 1st in a female champion in the Holstein ring at the Provincial Exhibition.

## Wrecker's Tale

Irving Boswell, Marshfield, right, accepts a silver tray donated by the Royal Bank of Canada here for the 1st in a female champion in the Holstein ring at the Provincial Exhibition.

## Wrecker's Tale

Irving Boswell, Marshfield, right, accepts a silver tray donated by the Royal Bank of Canada here for the 1st in a female champion in the Holstein ring at the Provincial Exhibition.

## Wrecker's Tale

Irving Boswell, Marshfield, right, accepts a silver tray donated by the Royal Bank of Canada here for the 1st in a female champion in the Holstein ring at the Provincial Exhibition.

## Wrecker's Tale

Irving Boswell, Marshfield, right, accepts a silver tray donated by the Royal Bank of Canada here for the 1st in a female champion in the Holstein ring at the Provincial Exhibition.

## Wrecker's Tale

Irving Boswell, Marshfield, right, accepts a silver tray donated by the Royal Bank of Canada here for the 1st in a female champion in the Holstein ring at the Provincial Exhibition.

## Wrecker's Tale

Irving Boswell, Marshfield, right, accepts a silver tray donated by the Royal Bank of Canada here for the 1st in a female champion in the Holstein ring at the Provincial Exhibition.

## Wrecker's Tale

Irving Boswell, Marshfield, right, accepts a silver tray donated by the Royal Bank of Canada here for the 1st in a female champion in the Holstein ring at the Provincial Exhibition.

## Wrecker's Tale

Irving Boswell, Marshfield, right, accepts a silver tray donated by the Royal Bank of Canada here for the 1st in a female champion in the Holstein ring at the Provincial Exhibition.

## Wrecker's Tale

Irving Boswell, Marshfield, right, accepts a silver tray donated by the Royal Bank of Canada here for the 1st in a female champion in the Holstein ring at the Provincial Exhibition.

## Wrecker's Tale

Irving Boswell, Marshfield, right, accepts a silver tray donated by the Royal Bank of Canada here for the 1st in a female champion in the Holstein ring at the Provincial Exhibition.

## Wrecker's Tale

Irving Boswell, Marshfield, right, accepts a silver tray donated by the Royal Bank of Canada here for the 1st in a female champion in the Holstein ring at the Provincial Exhibition.

## Wrecker's Tale

Irving Boswell, Marshfield, right, accepts a silver tray donated by the Royal Bank of Canada here for the 1st in a female champion in the Holstein ring at the Provincial Exhibition.

## Wrecker's Tale

Irving Boswell, Marshfield, right, accepts a silver tray donated by the Royal Bank of Canada here for the 1st in a female champion in the Holstein ring at the Provincial Exhibition.

## Wrecker's Tale

Irving Boswell, Marshfield, right, accepts a silver tray donated by the Royal Bank of Canada here for the 1st in a female champion in the Holstein ring at the Provincial Exhibition.

## Wrecker's Tale

Irving Boswell, Marshfield, right, accepts a silver tray donated by the Royal Bank of Canada here for the 1st in a female champion in the Holstein ring at the Provincial Exhibition.

## Wrecker's Tale

Irving Boswell, Marshfield, right, accepts a silver tray donated by the Royal Bank of Canada here for the 1st in a female champion in the Holstein ring at the Provincial Exhibition.

## Wrecker's Tale

Irving Boswell, Marshfield, right, accepts a silver tray donated by the Royal Bank of Canada here for the 1st in a female champion in the Holstein ring at the Provincial Exhibition.

## Wrecker's Tale

Irving Boswell, Marshfield, right, accepts a silver tray donated by the Royal Bank of Canada here for the 1st in a female champion in the Holstein ring at the Provincial Exhibition.

## Wrecker's Tale

Irving Boswell, Marshfield, right, accepts a silver tray donated by the Royal Bank of Canada here for the 1st in a female champion in the Holstein ring at the Provincial Exhibition.

## Wrecker's Tale

Irving Boswell, Marshfield, right, accepts a silver tray donated by the Royal Bank of Canada here for the 1st in a female champion in the Holstein ring at the Provincial Exhibition.

## Wrecker's Tale

Irving Boswell, Marshfield, right, accepts a silver tray donated by the Royal Bank of Canada here for the 1st in a female champion in the Holstein ring at the Provincial Exhibition.

## Wrecker's Tale

Irving Boswell, Marshfield, right, accepts a silver tray donated by the Royal Bank of Canada here for the 1st in a female champion in the Holstein ring at the Provincial Exhibition.

## Wrecker's Tale

Irving Boswell, Marshfield, right, accepts a silver tray donated by the Royal Bank of Canada here for the 1st in a female champion in the Holstein ring at the Provincial Exhibition.

## Wrecker's Tale

Irving Boswell, Marshfield, right, accepts a silver tray donated by the Royal Bank of Canada here for the 1st in a female champion in the Holstein ring at the Provincial Exhibition.

## Wrecker's Tale

Irving Boswell, Marshfield, right, accepts a silver tray donated by the Royal Bank of Canada here for the 1st in a female champion in the Holstein ring at the Provincial Exhibition.

## Wrecker's Tale

Irving Boswell, Marshfield, right, accepts a silver tray donated by the Royal Bank of Canada here for the 1st in a female champion in the Holstein ring at the Provincial Exhibition.

## Wrecker's Tale

Irving Boswell, Marshfield, right, accepts a silver tray donated by the Royal Bank of Canada here for the 1st in a female champion in the Holstein ring at the Provincial Exhibition.

## Wrecker's Tale

Irving Boswell, Marshfield, right, accepts a silver tray donated by the Royal Bank of Canada here for the 1st in a female champion in the Holstein ring at the Provincial Exhibition.

## Wrecker's Tale

Irving Boswell, Marshfield, right, accepts a silver tray donated by the Royal Bank of Canada here for the 1st in a female champion in the Holstein ring at the Provincial Exhibition.

## Wrecker's Tale

Irving Boswell, Marshfield, right, accepts a silver tray donated by the Royal Bank of Canada here for the 1st in a female champion in the Holstein ring at the Provincial Exhibition.

## Wrecker's Tale

Irving Boswell, Marshfield, right, accepts a silver tray donated by the Royal